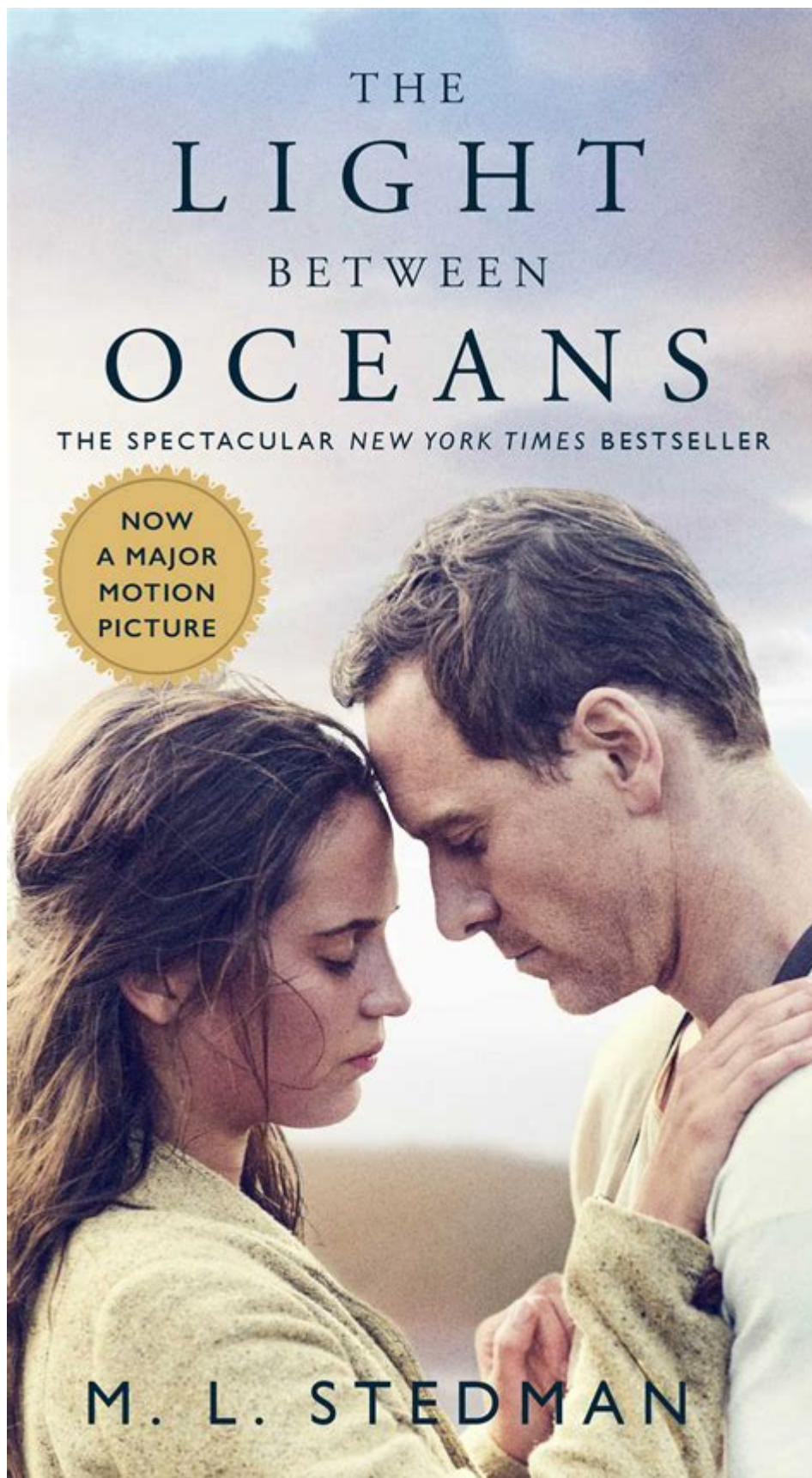


The Light Between Oceans



The Light Between Oceans is a poignant tale of love, loss, and the moral dilemmas that arise when personal desires clash with ethical choices. Written

by M.L. Stedman, this novel explores the life of a lighthouse keeper and his wife, who are faced with a heart-wrenching decision that will change their lives forever. Set against the backdrop of post-World War I Australia, the story delves into themes of isolation, the quest for belonging, and the consequences of one's actions. In this article, we will explore the main characters, the plot, the thematic elements, and the critical reception of this compelling narrative.

Plot Summary

The story begins in 1918, shortly after the end of World War I. Tom Sherbourne, a war veteran, takes up the position of a lighthouse keeper on Janus Rock, an isolated island off the coast of Australia. The remoteness of the setting symbolizes both the solitude that Tom craves and the emotional turmoil he carries from his experiences in the war.

After settling into his new life, Tom meets and marries Isabel Graysmark, a spirited woman longing for adventure and love. Their happiness, however, is marred by their inability to conceive a child. After suffering through two heartbreaking miscarriages, Isabel becomes despondent, and her grief weighs heavily on their marriage.

One fateful day, a boat washes ashore carrying a dead man and a living baby girl. Isabel persuades Tom to keep the baby, whom they name Lucy. The couple raises Lucy as their own, believing her to be a gift from the universe. However, their happiness is built on a lie, as the child belongs to another couple, Hannah and Jack, who are left devastated by the loss of their daughter.

The Dilemma of Morality

The crux of the story revolves around the moral implications of Tom and Isabel's decision to keep Lucy. Several key questions arise:

1. What is the nature of love?

The love Tom and Isabel have for Lucy cannot be denied; however, it is built on the foundation of deception. This raises questions about the morality of their actions and the extent to which love can justify wrongdoing.

2. Is it better to follow one's heart or adhere to the law?

Tom and Isabel's choice to raise Lucy contrasts with the legal and ethical obligations they have to Hannah and Jack. This conflict highlights the tension between personal desires and societal expectations.

3. What are the consequences of our choices?

The repercussions of Tom and Isabel's decision ripple through the lives of all involved, leading to profound emotional turmoil and suffering. The story ultimately examines how choices, even those made with the best intentions, can have devastating effects.

Main Characters

Understanding the characters is crucial to grasping the depth of the narrative. The following are the primary figures in the novel:

Tom Sherbourne

Tom is a complex character, shaped by his experiences in the war. He is depicted as a man of integrity and responsibility, yet he struggles with guilt and the weight of his decisions. His love for Isabel and Lucy fuels his desire to protect them, but it also leads him to make morally questionable choices.

Isabel Graysmark

Isabel is portrayed as passionate and impulsive. Her yearning for motherhood drives her to embrace Lucy as her own, despite the ethical ramifications. Throughout the story, she grapples with her happiness and the growing realization of the truth surrounding Lucy's origins.

Hannah Roennfeldt

Hannah, the biological mother of Lucy, represents the pain of loss and the quest for closure. Her journey through grief and her fight to reclaim her daughter add depth to the narrative, showcasing the consequences of Tom and Isabel's actions from a different perspective.

Jack Roennfeldt

Jack, Hannah's husband, is a supportive and loving partner who shares in the tragedy of losing Lucy. His character emphasizes the theme of family and the lengths one will go to protect loved ones. He serves as a foil to Tom, representing the lawful and moral side of the conflict.

Thematic Elements

The Light Between Oceans is rich with thematic elements that resonate throughout the narrative. Some of the most prominent themes include:

Isolation

The setting of Janus Rock serves as a metaphor for the isolation experienced by the characters. Tom's role as a lighthouse keeper symbolizes both physical and emotional solitude. This isolation amplifies the characters' internal struggles, as they navigate their relationships and the consequences of their choices.

Love and Sacrifice

Love is portrayed as both a powerful force and a source of conflict. Tom and Isabel's love for Lucy drives them to make choices that ultimately lead to pain and suffering. The novel raises questions about the sacrifices one is willing to make for love and the moral dilemmas that accompany such decisions.

Grief and Loss

The theme of grief is prevalent throughout the story, particularly through the experiences of Isabel and Hannah. The novel explores how individuals cope with loss and the ways in which it shapes their lives. The pain of losing a child resonates deeply with both mothers, highlighting the profound impact of loss on the human experience.

Critical Reception

Upon its release in 2012, *The Light Between Oceans* received widespread acclaim for its evocative narrative and emotional depth. Critics praised Stedman's lyrical writing style and her ability to create complex characters that resonate with readers. The novel's exploration of moral ambiguity sparked engaging discussions about ethics and the nature of love.

Readers have responded positively to the book, with many praising its ability to evoke strong emotions and provoke thought. The story's heart-wrenching twists and the moral dilemmas faced by the characters have left a lasting impression on those who have read it.

Adaptation

In 2016, *The Light Between Oceans* was adapted into a feature film directed by Derek Cianfrance and starring Alicia Vikander and Michael Fassbender as Isabel and Tom, respectively. The film received a mixed response from critics, though it was praised for its cinematography and performances. The adaptation sought to capture the emotional weight of the novel, although some fans felt it could not fully convey the depth of the original story.

Conclusion

The Light Between Oceans is a powerful exploration of love, loss, and the moral complexities of human relationships. Through the lens of Tom and Isabel's choices, M.L. Stedman crafts a narrative that resonates with readers, forcing them to confront their own ethical beliefs and the implications of their actions. The novel's themes of isolation, sacrifice, and grief create a rich tapestry that speaks to the universal human experience. As readers journey through the story, they are left to ponder the delicate balance between love and morality, ultimately recognizing that the light between oceans is often obscured by the shadows of our choices.

Frequently Asked Questions

What is the central theme of 'The Light Between Oceans'?

The central theme of 'The Light Between Oceans' revolves around love, sacrifice, and moral ambiguity, exploring the complexities of making choices that affect the lives of others.

How does the setting influence the story in 'The Light Between Oceans'?

The setting, a remote lighthouse on the Australian coast, serves as a symbol of isolation and the harsh realities of life, impacting the characters' decisions and their emotional struggles.

What moral dilemmas do the characters face in 'The Light Between Oceans'?

The characters face significant moral dilemmas regarding the decision to keep a baby they find washed ashore, which raises questions about legality, ethics, and the definitions of family and belonging.

How does the relationship between Tom and Isabel evolve throughout the novel?

Tom and Isabel's relationship evolves from a deep bond based on love and shared dreams to one strained by guilt, secrets, and the consequences of their choices, ultimately testing their commitment to each other.

What role does guilt play in 'The Light Between Oceans'?

Guilt plays a crucial role as it haunts the characters, particularly Tom and Isabel, affecting their psychological well-being and relationships, highlighting the emotional repercussions of their actions.

What message does 'The Light Between Oceans' convey about parenthood?

The novel conveys a complex message about parenthood, emphasizing that love alone is not enough; it also requires ethical considerations, responsibility, and the acknowledgment of the child's needs and rights.

Find other PDF article:

<https://soc.up.edu.ph/68-fact/files?docid=gWe68-0412&title=yale-financial-aid-appeal.pdf>

The Light Between Oceans

□□□□Light-Science & Applications□□□□□ - □□

light 40 Light 17.8 light
 ...

light commercial - WordReference Forums

Sep 23, 2008 · A "light commercial vehicle" is the formal term in the European Union for vehicles with a maximum allowed weight up to 3.5 tonnes. For example: furgoneta, caravana, furgoneta ...

light/heavy reading - WordReference Forums

Jul 16, 2010 · Light reading is something you read easily, requiring no deep thought or concentration, and quite likely to be amusing. It's suitable for reading at the airport or on the ...

turn the light on vs. turn on the light | WordReference Forums

Dec 2, 2010 · What if we create a word game with a copywriting like: Turn the light on [something]. Turn the light on science Turn the light on technology ? To expand on the others' ...

D::Light • Download

Download the D::Light software for intuitive lighting control in studios and other environments.

Turn off the light or Turn the light off? - WordReference Forums

Apr 9, 2008 · Is "Turn off the light" or "Turn the light off" correct? When I learned the grammar, the book explained that an adverb (Off) can come after an object only if an object is pro-noun. ...

Slight, Slightly, or Light - WordReference Forums

Sep 10, 2014 · They all sound quite good. 'Slight (ly)' can be attached to the noun (a slight salty taste = a slight taste of salt) or to the adjective (a slightly salty taste = a taste that is slightly ...

traffic light or traffic lights - WordReference Forums

Jul 7, 2014 · The traffic light is either a single lamp, or more rarely a set of three (red, amber, green) on one post. Traffic lights are either a set of three (red, amber, green) on one post, or a ...

Photonix eLight Advanced Photonics OEA ...

1 Light "IP"

D::Light

on PC, D::Light use Drivers for USB DMX Pro widget some PC runs as virtualSystem in order to discuss, a Discord channel is available DLonDiscord Computers that does not work with D::Light

□□□□Light-Science & Applications□□□□□□ - □□

light 40 Light 17.8 light ...

light commercial - WordReference Forums

Sep 23, 2008 · A "light commercial vehicle" is the formal term in the European Union for vehicles with a maximum allowed weight up to 3.5 tonnes. For example: furgoneta, caravana, furgoneta ...

light/heavy reading - WordReference Forums

Jul 16, 2010 · Light reading is something you read easily, requiring no deep thought or concentration, and quite likely to be amusing. It's suitable for reading at the airport or on the ...

turn the light on vs. turn on the light | WordReference Forums

Dec 2, 2010 · What if we create a word game with a copywriting like: Turn the light on [something]. Turn the light on science Turn the light on technology ? To expand on the others' ...

D::Light • Download

Download the D::Light software for intuitive lighting control in studios and other environments.

Turn off the light or Turn the light off? - WordReference Forums

Apr 9, 2008 · Is "Turn off the light" or "Turn the light off" correct? When I learned the grammar, the book explained that an adverb (Off) can come after an object only if an object is pro-noun. ...

Slight, Slightly, or Light - WordReference Forums

Sep 10, 2014 · They all sound quite good. 'Slight (ly)' can be attached to the noun (a slight salty taste = a slight taste of salt) or to the adjective (a slightly salty taste = a taste that is slightly ...

traffic light or traffic lights - WordReference Forums

Jul 7, 2014 · The traffic light is either a single lamp, or more rarely a set of three (red, amber, green) on one post. Traffic lights are either a set of three (red, amber, green) on one post, or a ...

PhotoniX eLight Advanced Photonics OEA ...

1 Light "IP" ...

D::Light

on PC, D::Light use Drivers for USB DMX Pro widget some PC runs as virtualSystem in order to discuss, a Discord channel is available DLonDiscord Computers that does not work with D::Light

Explore the emotional journey of "The Light Between Oceans." Discover how love

[Back to Home](#)