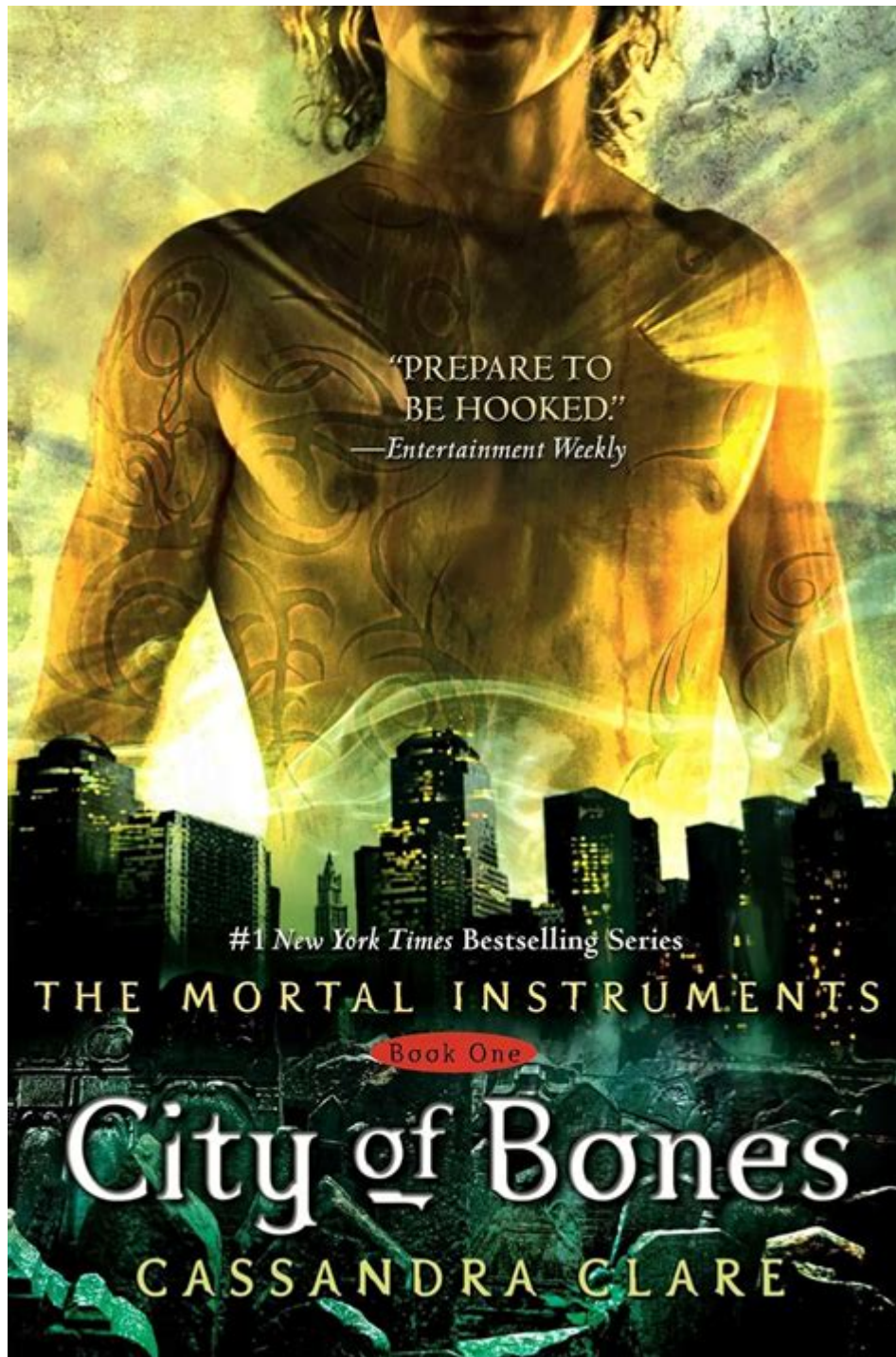


The Mortal Instruments City Of Bones

Chapter 1



THE MORTAL INSTRUMENTS: CITY OF BONES OPENS WITH A CAPTIVATING FIRST CHAPTER THAT SETS THE STAGE FOR AN ENTHRALLING FANTASY ADVENTURE. IN THIS INITIAL SEGMENT, WE ARE INTRODUCED TO A WORLD FILLED WITH SHADOWHUNTERS, DEMONS, AND A RICH TAPESTRY OF LORE THAT WILL BECOME CENTRAL TO THE NARRATIVE. THE PROTAGONIST, CLARY FRAY, FINDS HERSELF NAVIGATING A NIGHT THAT WILL FOREVER ALTER THE COURSE OF HER LIFE, PLUNGING HER INTO A HIDDEN SOCIETY THAT EXISTS ALONGSIDE OUR OWN. THIS CHAPTER IS NOT JUST AN INTRODUCTION TO CLARY BUT ALSO A GATEWAY INTO THE VIBRANT WORLD OF THE SHADOWHUNTERS, A GROUP DEDICATED TO PROTECTING HUMANITY FROM DARK FORCES.

INTRODUCTION TO CLARY FRAY

CHARACTER OVERVIEW

CLARY FRAY IS A FIFTEEN-YEAR-OLD GIRL LIVING IN BROOKLYN, NEW YORK. IN THIS CHAPTER, SHE IS PORTRAYED AS A TYPICAL TEENAGER, FILLED WITH ASPIRATIONS AND A SENSE OF NORMALCY, YET SHE IS ALSO VERY MUCH AN ARTIST AT HEART. HER CHARACTER IS DEFINED BY:

- CREATIVITY: CLARY IS PASSIONATE ABOUT ART, WHICH IS REFLECTED IN HER SKETCHES AND HER KEEN EYE FOR DETAIL.
- INDEPENDENCE: SHE OFTEN STANDS OUT DUE TO HER STRONG WILL AND DETERMINATION TO CARVE HER OWN PATH.
- CURIOSITY: HER INQUISITIVE NATURE DRIVES THE NARRATIVE FORWARD, AS SHE SEEKS TO UNCOVER THE MYSTERIES SURROUNDING HER LIFE AND THE WORLD AROUND HER.

AS THE CHAPTER UNFOLDS, WE SEE CLARY'S SPIRITED PERSONALITY COME TO LIFE, PROVIDING READERS WITH A RELATABLE YET COMPLEX PROTAGONIST.

SETTING THE SCENE

THE CHAPTER OPENS WITH CLARY AND HER BEST FRIEND, SIMON LEWIS, HEADING TO A LOCAL NIGHTCLUB CALLED THE PANDEMONIUM. THE SETTING PLAYS A CRUCIAL ROLE IN ESTABLISHING THE TONE OF THE NOVEL:

- URBAN ENVIRONMENT: THE BUSTLING NIGHTLIFE OF BROOKLYN IS VIVIDLY DEPICTED, SHOWCASING A VIBRANT CITY FILLED WITH DIVERSE CHARACTERS AND HIDDEN SECRETS.
- ATMOSPHERE: THE CLUB IS FILLED WITH MUSIC, DANCING, AND A SENSE OF EXCITEMENT, BUT IT ALSO HINTS AT THE DARKER ELEMENTS THAT WILL SOON EMERGE IN CLARY'S LIFE.
- SYMBOLISM: THE NIGHTCLUB SERVES AS A METAPHOR FOR THE DUALITY OF CLARY'S LIFE—ONE FILLED WITH ORDINARY TEENAGE EXPERIENCES AND THE OTHER TEETERING ON THE EDGE OF THE SUPERNATURAL.

THE NIGHT AT PANDEMONIUM

THE ENCOUNTER

AS CLARY AND SIMON ENTER PANDEMONIUM, THEY ARE IMMEDIATELY ENGULFED IN THE ATMOSPHERE OF THE CLUB. THIS SETTING IS NOT MERELY A BACKDROP; IT SERVES TO INTRODUCE THE READER TO THE CHAOTIC AND THRILLING WORLD THAT CLARY IS ABOUT TO DISCOVER. WITHIN THIS CHAPTER, SEVERAL KEY EVENTS UNFOLD:

1. INTRODUCTION OF SIMON: CLARY'S BEST FRIEND IS CHARACTERIZED AS THE QUINTESSENTIAL SUPPORTIVE FRIEND, OFTEN PROVIDING COMIC RELIEF AND A GROUNDING PRESENCE IN HER LIFE.
2. ARTISTIC INSPIRATION: CLARY'S OBSERVATIONS ABOUT HER SURROUNDINGS REVEAL HER ARTISTIC NATURE, AS SHE NOTES THE BEAUTY IN THE CHAOS AROUND HER. THIS DETAIL WILL BECOME SIGNIFICANT AS HER JOURNEY UNFOLDS.
3. A MYSTERIOUS FIGURE: AS THE NIGHT PROGRESSES, CLARY NOTICES A GROUP OF MYSTERIOUS INDIVIDUALS DRESSED IN UNUSUAL ATTIRE, HINTING AT THE EXISTENCE OF A WORLD BEYOND HER COMPREHENSION.

THE CALL TO ADVENTURE

THE PIVOTAL MOMENT OCCURS WHEN CLARY WITNESSES A SCENE THAT WILL CHANGE HER LIFE FOREVER. SHE SEES THE MYSTERIOUS GROUP OF INDIVIDUALS, WHO ARE LATER REVEALED TO BE SHADOWHUNTERS, ENGAGE IN A VIOLENT

CONFRONTATION WITH A DEMON. THIS EVENT SERVES AS CLARY'S CALL TO ADVENTURE, THRUSTING HER INTO A CONFLICT THAT SHE NEVER KNEW EXISTED.

- CONFLICT: THE FIGHT HIGHLIGHTS THE DANGERS LURKING IN THE SHADOWS AND ESTABLISHES THE STAKES OF THE STORY.
- FORESHADOWING: CLARY'S INNOCENT CURIOSITY LEADS HER DIRECTLY INTO THE HEART OF THE SUPERNATURAL WORLD, FORESHADOWING HER UPCOMING TRIALS AND TRIBULATIONS.

THE AFTERMATH OF THE ENCOUNTER

REALIZATION AND CONFUSION

AFTER THE CONFRONTATION, CLARY'S INITIAL EXCITEMENT QUICKLY TURNS TO CONFUSION AND FEAR. SHE GRAPPLES WITH THE REALIZATION THAT THERE IS MORE TO HER WORLD THAN SHE PREVIOUSLY UNDERSTOOD. THIS THEME OF DUALITY—BETWEEN THE MUNDANE AND THE EXTRAORDINARY—BECOMES A CENTRAL MOTIF THROUGHOUT THE NOVEL.

- QUESTIONS RAISED: CLARY IS LEFT WITH NUMEROUS QUESTIONS ABOUT WHAT SHE WITNESSED AND WHO THE PEOPLE WERE THAT SHE SAW FIGHTING. THIS SENSE OF MYSTERY PROPELS HER CHARACTER DEVELOPMENT AND MOTIVATES HER TO SEEK ANSWERS.
- THE ROLE OF MEMORY: THE CHAPTER EMPHASIZES THE IMPORTANCE OF MEMORY, AS CLARY STRUGGLES TO PROCESS THE EVENTS OF THE NIGHT. WHAT SHE SAW AND EXPERIENCED WILL HAUNT HER AS SHE DELVES DEEPER INTO THE SHADOWHUNTER WORLD.

SIMON'S PERSPECTIVE

SIMON'S CHARACTER SERVES AS A CONTRASTING LENS THROUGH WHICH CLARY'S EXPERIENCES ARE VIEWED. WHILE HE IS INTRIGUED BY THE SUPERNATURAL ELEMENTS, HE REMAINS GROUNDED IN REALITY, PROVIDING A BALANCE TO CLARY'S ESCALATING CURIOSITY AND CONFUSION.

- SUPPORTIVE FRIEND: SIMON'S LOYALTY IS EVIDENT AS HE TRIES TO COMFORT CLARY, DEMONSTRATING THE IMPORTANCE OF FRIENDSHIP IN TIMES OF CRISIS.
- HUMOR AND LIGHTNESS: HIS HUMOROUS COMMENTARY ADDS LEVITY TO THE SITUATION, ALLOWING READERS TO CONNECT WITH HIM AND APPRECIATE THE DYNAMIC BETWEEN THE TWO FRIENDS.

CONCLUSION OF CHAPTER 1

THE FIRST CHAPTER OF THE MORTAL INSTRUMENTS: CITY OF BONES EFFECTIVELY SETS THE TONE FOR THE SERIES, INTRODUCING READERS TO A WORLD BRIMMING WITH INTRIGUE AND DANGER. CLARY'S JOURNEY IS JUST BEGINNING, AND HER ENCOUNTER AT PANDEMONIUM SERVES AS A CATALYST FOR THE UNFOLDING ADVENTURE.

- CHARACTER DEVELOPMENT: CLARY'S TRANSFORMATION FROM AN ORDINARY GIRL INTO A KEY PLAYER IN A LARGER CONFLICT IS HINTED AT, FORESHADOWING HER GROWTH THROUGHOUT THE SERIES.
- THEMES OF IDENTITY AND BELONGING: THE CHAPTER RAISES QUESTIONS ABOUT IDENTITY, AS CLARY BEGINS TO WONDER WHO SHE TRULY IS IN RELATION TO THE WORLD SHE HAS STUMBLERD INTO.
- ANTICIPATION FOR FUTURE EVENTS: THE CLIFFHANGER NATURE OF THE CHAPTER LEAVES READERS EAGER TO CONTINUE, EXCITED TO UNCOVER THE MYSTERIES THAT LIE AHEAD.

IN SUMMARY, THIS CHAPTER IS A MASTERFUL BLEND OF CHARACTER INTRODUCTION, SETTING ESTABLISHMENT, AND THEMATIC EXPLORATION, LAYING A STRONG FOUNDATION FOR THE REST OF THE NARRATIVE. AS READERS TURN THE PAGE, THEY ARE INVITED TO JOIN CLARY ON A JOURNEY THAT PROMISES TO BE FILLED WITH MAGIC, DANGER, AND THE SEARCH FOR IDENTITY.

FREQUENTLY ASKED QUESTIONS

WHAT IS THE MAIN SETTING INTRODUCED IN CHAPTER 1 OF 'CITY OF BONES'?

CHAPTER 1 IS PRIMARILY SET IN A NIGHTCLUB CALLED PANDEMONIUM, LOCATED IN NEW YORK CITY, WHERE CLARY FRAY FIRST ENCOUNTERS THE SHADOWHUNTERS.

WHO ARE THE FIRST CHARACTERS INTRODUCED IN CHAPTER 1?

THE FIRST CHARACTERS INTRODUCED ARE CLARY FRAY AND HER FRIEND SIMON LEWIS, WHO ARE AT THE NIGHTCLUB TOGETHER.

WHAT SIGNIFICANT EVENT OCCURS DURING CLARY'S VISIT TO THE NIGHTCLUB?

DURING HER VISIT, CLARY WITNESSES A MYSTERIOUS ALTERCATION INVOLVING A GROUP OF PEOPLE THAT NO ONE ELSE SEEMS TO NOTICE, WHICH INTRODUCES THE SUPERNATURAL ELEMENTS OF THE STORY.

HOW DOES CLARY'S PERCEPTION OF REALITY BEGIN TO CHANGE IN CHAPTER 1?

CLARY'S PERCEPTION BEGINS TO CHANGE WHEN SHE SEES THE SHADOWHUNTERS AND THE DEMON THEY ARE FIGHTING, SPARKING HER JOURNEY INTO THE WORLD OF THE SHADOWHUNTERS.

WHAT THEMES ARE INTRODUCED IN CHAPTER 1 OF 'CITY OF BONES'?

THEMES OF IDENTITY, THE HIDDEN LAYERS OF REALITY, AND THE IDEA OF THE MUNDANE VERSUS THE SUPERNATURAL ARE INTRODUCED IN THIS CHAPTER.

Find other PDF article:

<https://soc.up.edu.ph/41-buzz/pdf?docid=MOX28-0694&title=modeling-photosynthesis-and-cellular-respiration-answer-key.pdf>

The Mortal Instruments City Of Bones Chapter 1

AI Mortal -

Jun 30, 2022 · Mortal ██████████ akochan ██████████ai██████
██████

□□□□□□□□ *mortal* □□□□□□□□ - □□

Mar 4, 2018 · mortalmortals.com 12

Mortal Shell

```
#####IGN#Mortal Shell####8#####818#####Mortal Shell#####  
#####... 
```

mortal AI? -

```

mortal rating
pt
rating ...

```

□□□□□□□□□□□□□□ - □□

Mortal Shell 8 18 4 5

11 (Mortal Kombat 11)? -

Mortal Kombat MK 1992 MK11 27

Motrix? -

(yunque.com) Tracker

Mortal Online 2 - Star Vault

Mortal Online 2 is a next generation, first-person, sandbox MMORPG set in a fantasy world. In Mortal Online 2, players are never truly free from danger. There are no specific PvP or safe ...

dx11dx12? -

dx11 api dx12 api dx11 shader pipeline gpu

HintonForward-Forward -

Hinton“mortal computing”FF

AI Mortal -

Jun 30, 2022 · Mortal akochan ai

mortal -

Mar 4, 2018 · mortal

Mortal Shell

IGN Mortal Shell 8 18 Mortal Shell

mortalAI? -

mortal rating 1% 0.0pt

-

Mortal Shell 8 18 4 5

11 (Mortal Kombat 11)? -

Mortal Kombat MK 1992 MK11 27

Motrix? -

(yunque.com) Tracker

Mortal Online 2 - Star Vault

Mortal Online 2 is a next generation, first-person, sandbox MMORPG set in a fantasy world. In Mortal Online 2, players are never truly free from danger. There are no specific PvP or safe ...

dx11dx12? -
dx11 api dx12 api dx11 shader pipeline gpu ...

HintonForward-Forward -
Hinton“mortal computing”FF ...

Dive into the thrilling world of 'The Mortal Instruments: City of Bones' Chapter 1. Discover key characters and themes that set the stage for an epic adventure. Learn more!

[Back to Home](#)