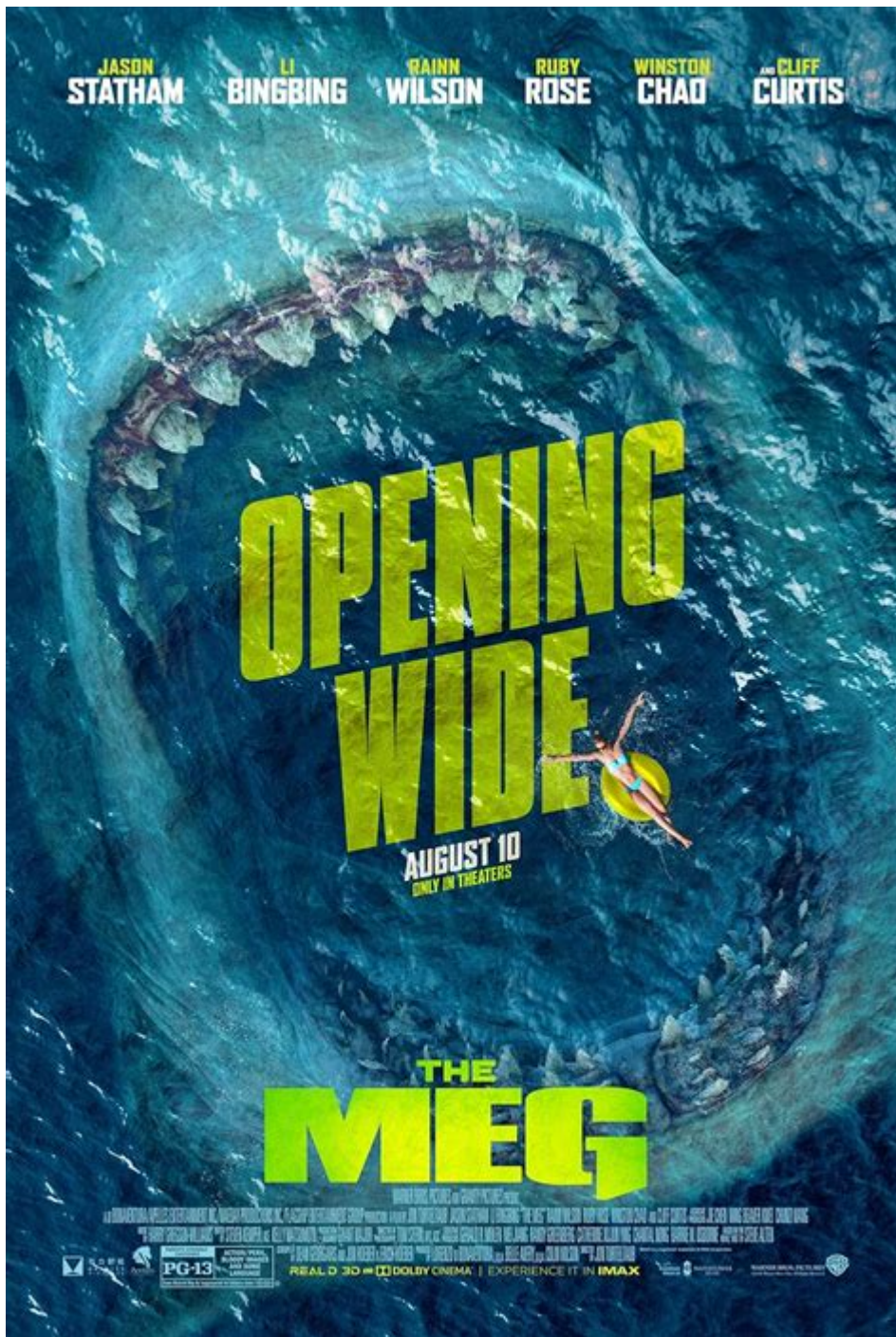


The Meg 1 Parents Guide



The Meg 1 Parents Guide

The Meg, directed by Jon Turteltaub and released in 2018, is a science fiction thriller that has captivated audiences with its blend of suspense, action, and underwater adventure. However, as with any film, parents may want to know whether it is appropriate for their children. This article serves as a comprehensive guide for parents considering whether to allow their children to watch The Meg, covering aspects such as content warnings, themes, and overall suitability.

Overview of The Meg

The Meg centers on a group of scientists who encounter a prehistoric megaldon shark during an underwater expedition. The film stars Jason Statham as Jonas Taylor, a deep-sea rescue diver who must confront his fears and the terrifying creature to save his team and others trapped below the surface. While the movie provides thrilling moments and cutting-edge special effects, it also raises several concerns for younger audiences.

Content Warnings

When evaluating The Meg for viewing by children, several content warnings should be considered. The film is rated PG-13, which indicates that some material may not be suitable for children under 13 years of age without parental guidance. Here are key elements to consider:

Violence and Gore

- The Meg features various scenes of intense violence, including:
- Shark attacks: The film portrays graphic shark attacks on humans and marine animals, which may be distressing for younger viewers.
- Blood and injury: There are instances of bloodshed and injury depicted, including characters being bitten or attacked by the shark.
- Survival scenarios: Characters find themselves in perilous situations, which may induce anxiety or fear in younger audiences.

While the violence is not excessively graphic compared to some other films, the depiction of danger and the threat of death can be intense.

Language

The film contains some mild to moderate profanity. Examples include:

- Occasional use of curse words, including "shit" and "hell"
- Some characters express frustration using stronger language, which may not be suitable for younger children.

Parents should weigh whether their children are accustomed to hearing such language in films or if they might find it inappropriate.

Disturbing Themes

The Meg also explores themes that may be disturbing for younger viewers, including:

- Fear of the unknown: The concept of a giant shark lurking in the depths can evoke primal fears.
- Survival and danger: The film's narrative revolves around survival against overwhelming odds,

which can be anxiety-inducing.

These themes, while common in thriller genres, may resonate differently with children and sensitive viewers.

Age Appropriateness

Given the content warnings outlined above, *The Meg* is generally considered appropriate for viewers aged 13 and older. However, age appropriateness can vary based on individual maturity levels. Here are some factors to consider when determining if the film is suitable for your child:

Maturity Level

- Emotional maturity: Consider how your child reacts to suspenseful or scary situations. If they tend to be easily frightened, they may not handle the film well.
- Understanding of violence: Assess whether your child can differentiate between fiction and reality, especially regarding violent scenes.

Discussion with Older Teens

If you have older teens who wish to watch *The Meg*, it might be beneficial to discuss the following points:

- Reactions to the film: Talk about their feelings during intense scenes and how they perceive the depiction of violence.
- Real-life implications: Explore the themes of survival and fear, and discuss how these might apply to real-life scenarios.

This dialogue can foster critical thinking and help teens process their viewing experience.

Positive Messages

Despite its intense content, *The Meg* also presents several positive messages worth noting:

Teamwork and Collaboration

- The film emphasizes the importance of teamwork, as the characters must work together to overcome obstacles and survive against the shark.
- It showcases the value of collaboration in high-stress situations and highlights the strengths that each character brings to the team.

Courage and Resilience

- The protagonist, Jonas Taylor, embodies courage as he faces his fears to rescue others.
- The film promotes themes of resilience, showing that confronting one's fears can lead to personal growth and success.

These messages can serve as discussion points for parents and children, providing an opportunity to reflect on the film's themes.

Alternatives to The Meg

For parents who find *The Meg* unsuitable for their children, there are several alternative films in the action-adventure genre that may be more appropriate:

- **Finding Nemo** (2003) - An animated film about a clownfish's adventure to find his son, filled with humor and heartwarming moments.
- **The Secret Life of Pets** (2016) - A lighthearted animated film that explores what pets do when their owners are away.
- **Jaws: The Revenge** (1987) - A classic shark film that offers suspense without the modern graphic intensity of *The Meg*.
- **Big Hero 6** (2014) - A family-friendly superhero film that focuses on friendship and innovation.

These alternatives can provide entertainment without the intense fear and violence present in *The Meg*.

Final Thoughts

In conclusion, *The Meg* is a thrilling yet intense film that may not be suitable for all viewers, particularly younger children. Parents should carefully consider the content warnings, themes, and their child's individual maturity level when deciding whether to allow them to watch the movie. While it offers positive messages about teamwork and courage, the graphic violence and disturbing themes may overshadow these benefits for sensitive viewers.

If you choose to watch *The Meg* with your child, consider creating a space for discussion afterward to unpack any emotions or questions that arise from the film. Ultimately, being informed and engaged as a parent can lead to a more meaningful viewing experience for both you and your children.

Frequently Asked Questions

What is the age rating for 'The Meg' according to the parents guide?

'The Meg' is rated PG-13 for intense sequences of action/violence, and some bloody images.

Are there any strong language or profanity issues in 'The Meg'?

Yes, 'The Meg' contains some mild profanity, but it is not excessive.

Does 'The Meg' include any graphic violence that parents should be aware of?

While 'The Meg' features action and suspense, the violence is stylized and not overly graphic, but it may be intense for younger viewers.

Is 'The Meg' suitable for children under the age of 13?

Due to its intense action sequences and some disturbing imagery, 'The Meg' may not be suitable for children under 13 without parental guidance.

Are there any scenes in 'The Meg' that might be frightening for kids?

Yes, there are suspenseful and potentially frightening scenes involving the giant shark, which may be scary for younger audiences.

What themes are explored in 'The Meg' that parents should discuss with their kids?

'The Meg' explores themes of teamwork, survival, and the consequences of human actions on nature, which can lead to meaningful discussions with children.

Find other PDF article:

<https://soc.up.edu.ph/61-page/Book?docid=eff13-6586&title=the-riddle-of-the-sands.pdf>

The Meg 1 Parents Guide

$$\square\square\square\square\square\text{eq}\text{meg}\square\square\square\square\square\square\square\square$$

Jun 18, 2012 · [eg](#) [meg](#) [eg](#) ethylene glycol [meg](#) mono ethylene glycol [ethylene glycol](#) ["eg"](#) ...

MEG EEG MEG MRI CT 00 0000 ...

"Wondering if 'The Meg 1' is suitable for your kids? Check out our comprehensive parents guide for insights on content

[Back to Home](#)