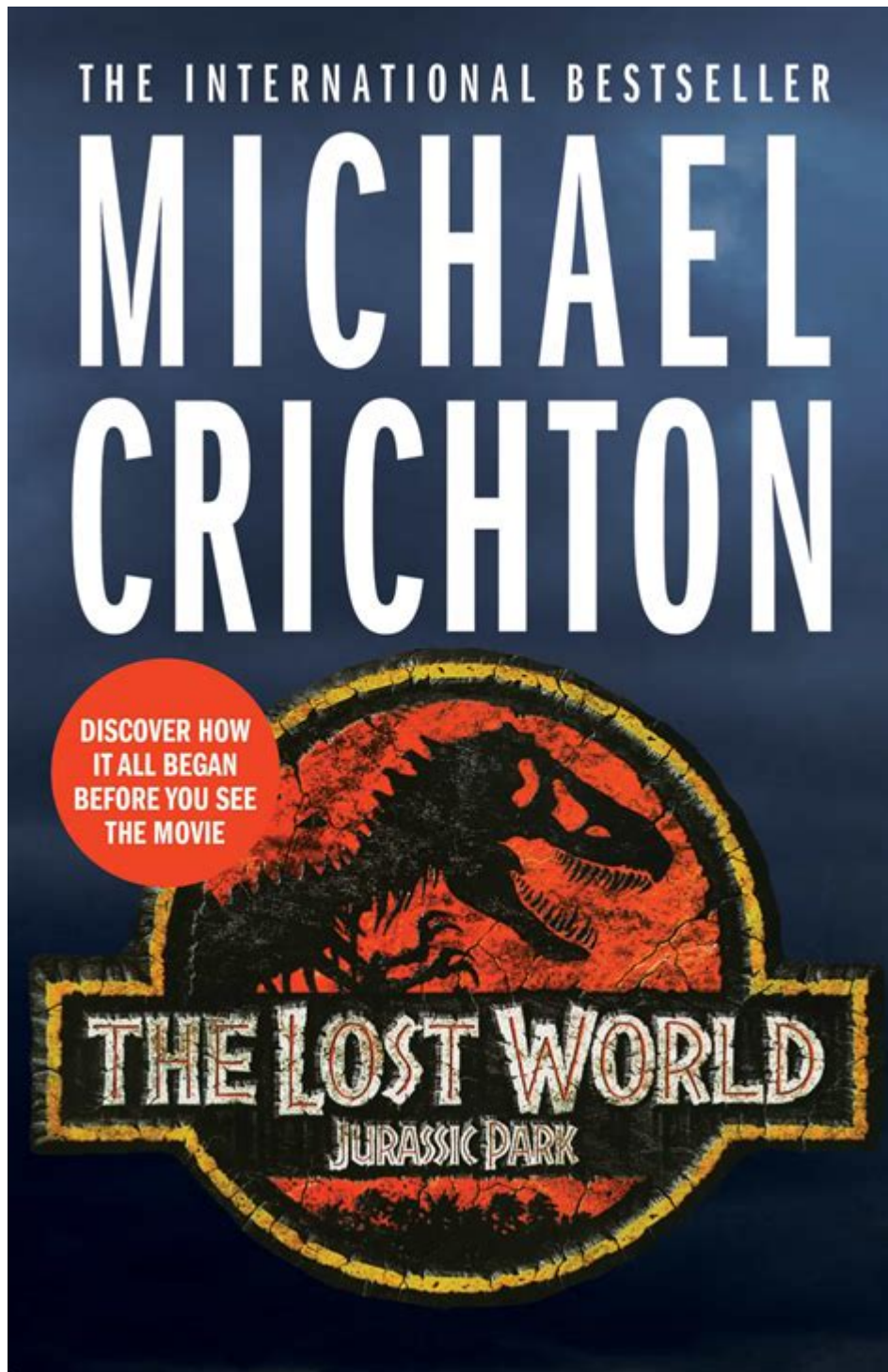


The Lost World Michael Crichton



The Lost World is a gripping science fiction novel by Michael Crichton, published in 1995 as a sequel to his highly acclaimed work, Jurassic Park. Crichton, known for his ability to blend thrilling narratives with scientific concepts, returns to the lush jungles of Isla Sorna, where dinosaurs once again play a significant role in the unfolding drama. This article delves into the themes, characters, and the impact of The Lost World on both literature and popular culture.

Overview of The Lost World

Set four years after the catastrophic events of Jurassic Park, *The Lost World* explores the consequences of humanity's attempts to manipulate genetic engineering and the ethical dilemmas posed by such advancements. The novel introduces readers to an array of new characters and echoes familiar themes from its predecessor while expanding upon the scientific ideas that underpin the story.

Plot Summary

The narrative follows a group of characters who venture to Isla Sorna, also known as Site B, a location where dinosaurs were bred before being transported to Jurassic Park. The plot is driven by several key events:

- 1. Rescue Mission:** Ian Malcolm, a mathematician and chaos theorist, is drawn back into the world of dinosaurs when he learns that a team of scientists has gone to Isla Sorna to study the dinosaurs in their natural habitat. He is determined to rescue them and uncover the truth about the dinosaurs on the island.
- 2. The Team:** Malcolm assembles a team that includes:
 - Sarah Harding, a field biologist who has a strong interest in the dinosaurs.
 - Eddie Carr, a field equipment specialist who provides technical support.
 - Richard Levine, a paleontologist with a fixation on the dinosaurs of Isla Sorna.
- 3. Challenges and Discoveries:** Upon arriving on the island, the team encounters several challenges:
 - The presence of dangerous dinosaurs, including the formidable Tyrannosaurus Rex and the cunning Velociraptors.
 - Environmental hazards and the unpredictable nature of the island itself.
- 4. Climactic Confrontations:** As the team navigates the treacherous terrain, they must confront not only the dinosaurs but also their own motivations and the ethical implications of their research.

Themes in The Lost World

The Lost World explores various themes that resonate with readers, showcasing Crichton's ability to weave complex narratives with profound moral questions.

- 1. Chaos Theory and Unpredictability:**
 - The novel delves into chaos theory, emphasizing that small changes can lead to unpredictable outcomes. This theme is exemplified by the existence of

dinosaurs that were believed to be extinct.

- Ian Malcolm's philosophy on chaos becomes a central element of the story, reminding readers of the inherent unpredictability of nature.

2. Human Hubris:

- Crichton critiques humanity's arrogance in attempting to control nature through genetic engineering.
- Characters who pursue their scientific ambitions without considering the consequences often face dire consequences, underscoring the dangers of playing God.

3. Ethics of Scientific Exploration:

- The novel raises questions about the moral implications of scientific research, particularly in genetics and cloning.
- The characters grapple with their responsibilities as scientists and the impact of their actions on the world.

4. Survival and Adaptation:

- The struggle for survival in a world dominated by prehistoric creatures is a recurring motif.
- The characters must adapt to their environment and learn to coexist with the dinosaurs, highlighting the resilience of both humans and nature.

Character Analysis

The characters in *The Lost World* are richly developed, each bringing unique perspectives and motivations to the story.

Ian Malcolm

- Role: As the protagonist, Ian Malcolm serves as the voice of reason and a cautionary figure.
- Character Traits: He is intelligent, sarcastic, and deeply aware of the consequences of scientific exploration.
- Development: Throughout the novel, Malcolm's character evolves as he confronts the dangers of Isla Sorna and reflects on the implications of humanity's actions.

Sarah Harding

- Role: A passionate field biologist, Sarah represents a different approach to studying dinosaurs.
- Character Traits: She is strong-willed, resourceful, and willing to challenge traditional scientific views.
- Development: Sarah's character arc highlights the importance of empathy and

understanding in scientific endeavors.

Richard Levine

- Role: A paleontologist obsessed with dinosaurs, Levine embodies the archetype of the ambitious scientist.
- Character Traits: He is enthusiastic, curious, and somewhat reckless in his pursuit of knowledge.
- Development: Levine's journey reflects the dangers of unchecked ambition and the consequences of disregarding safety.

Eddie Carr

- Role: The technical expert of the team, Eddie provides crucial support in navigating the challenges of the island.
- Character Traits: He is practical, loyal, and skilled in handling equipment.
- Development: Eddie's character serves as a reminder of the importance of teamwork and expertise in overcoming obstacles.

The Impact of The Lost World

The Lost World not only stands as a significant literary work but also has had a lasting impact on popular culture and the science fiction genre.

Literary Significance

- Continuation of Themes: The novel continues to explore themes introduced in Jurassic Park, solidifying Crichton's reputation as a master of blending science and fiction.
- Engagement with Science: Crichton's focus on scientific accuracy and ethical dilemmas encourages readers to think critically about advancements in genetics and biotechnology.

Film Adaptation

- The Lost World: Jurassic Park: In 1997, Steven Spielberg directed a film adaptation of Crichton's novel, which became a major box office success.
- Differences from the Novel: While the film retains many elements of the book, it diverges in characters and plotlines, leading to mixed reviews from fans of the original work.

- Cultural Impact: The film further popularized the franchise, leading to sequels and merchandise that continue to resonate with audiences today.

Conclusion

The Lost World by Michael Crichton is a captivating exploration of humanity's relationship with nature, the ethical challenges of scientific progress, and the unpredictability of the natural world. Through its complex characters and engaging narrative, the novel prompts readers to reflect on the consequences of human actions and the responsibilities that come with scientific exploration. Crichton's ability to weave thrilling adventure with profound themes ensures that The Lost World remains a significant work in both literature and popular culture, continuing to inspire discussions on science and ethics long after its publication.

Frequently Asked Questions

What is the main premise of 'The Lost World' by Michael Crichton?

'The Lost World' continues the story from 'Jurassic Park,' exploring the repercussions of genetic engineering and the existence of dinosaurs on a remote island. It follows a new expedition to the island where scientists seek to study the dinosaurs in their natural habitat.

How does 'The Lost World' differ from its predecessor, 'Jurassic Park'?

'The Lost World' focuses more on the ecological and ethical implications of cloning and genetic manipulation, while 'Jurassic Park' is primarily about the dangers of playing God with nature. The sequel introduces new characters and expands on the concept of dinosaur behavior and survival.

What themes are prevalent in 'The Lost World'?

Key themes include the unpredictability of nature, the ethical considerations of scientific advancements, the consequences of human interference in ecosystems, and the survival instincts of both humans and dinosaurs.

Who are the main characters in 'The Lost World'?

Main characters include Ian Malcolm, a mathematician and chaos theorist; Sarah Harding, a field biologist; Eddie Carr, a field equipment specialist; and the young protagonist, Kelly Curtis. Together, they navigate the dangers of the island and the dinosaurs that inhabit it.

What is the significance of the title 'The Lost World'?

The title refers to the concept of a hidden, uncharted world where prehistoric creatures still exist. It evokes the idea of a lost civilization and the exploration of unknown territories, paralleling the real-life discovery of the dinosaurs on the island.

Has 'The Lost World' been adapted into any films or media?

'The Lost World' was adapted into a film in 1997, directed by Steven Spielberg, titled 'The Lost World: Jurassic Park.' The film takes liberties with the plot of the book but retains the central idea of dinosaurs living in a modern world.

Find other PDF article:

<https://soc.up.edu.ph/31-click/pdf?ID=Fco90-8882&title=hs-science-class-for-college-credit-crossword-clue.pdf>

[The Lost World Michael Crichton](#)

Find, secure, or erase a lost Android device - Android Help

Mark as lost: Locks your device with your PIN or password. If you don't have a lock, you can set one. To help someone return your device to you, you can add a message or phone number to ...

How to recover your Google Account or Gmail

If you forgot your password or username, or you can't get verification codes, follow these steps to recover your Google Account. That way, you can use services like Gmail, Pho

Find lost files in Google Drive - Computer - Google Drive Help

Contact the person who gave you access, and ask them to restore it or share it with you again. If you created a file in Drive and can't find it, it could be "hidden" because it lost its original ...

Fix common issues with 2-Step Verification - Google Help

If you've lost access to your primary phone, you can verify it's you with: Another phone number you've added in the 2-Step Verification section of your Google Account. A hardware security ...

Change or reset your password - Computer - Google Account Help

If you change or reset your password, you'll be signed out everywhere except: Devices you use to verify that it's you when you sign in. Some devices with third-party apps that you've given ...

Sign in if you lost your security key - Google Account Help

If your security key is lost, you can follow these steps to get back into your account and protect it. Choose the right steps for you depending on whether you've set up another second step like:

Get help signing in to YouTube - Google Help

How did you last sign in to your YouTube channel? I signed in with an email address I signed in with a YouTube username

Find lost photos & videos - Computer - Google Photos Help

Find lost photos & videos When you turn on backup, your photos are stored in photos.google.com. Important: If you're inactive in Google Photos for 2 years or more, your ...

Be ready to find a lost Android device - Android Help

You can use tracker tags to help keep track of and find lost items such as keys, luggage, bikes and more. You shouldn't use tracker tags to track pets or locate stolen items. Acceptable uses ...

Lock or erase your lost phone or computer

Lock or erase your lost phone or computer If your phone, tablet, or laptop is lost or stolen, follow these steps to help secure your device. If you can't get the device back, taking a few steps ...

Find, secure, or erase a lost Android device - Android Help

Mark as lost: Locks your device with your PIN or password. If you don't have a lock, you can set one. To help someone return your device to you, you can add a message or phone number to ...

How to recover your Google Account or Gmail

If you forgot your password or username, or you can't get verification codes, follow these steps to recover your Google Account. That way, you can use services like Gmail, Pho

Find lost files in Google Drive - Computer - Google Drive Help

Contact the person who gave you access, and ask them to restore it or share it with you again. If you created a file in Drive and can't find it, it could be "hidden" because it lost its original ...

Fix common issues with 2-Step Verification - Google Help

If you've lost access to your primary phone, you can verify it's you with: Another phone number you've added in the 2-Step Verification section of your Google Account. A hardware security ...

Change or reset your password - Computer - Google Account Help

If you change or reset your password, you'll be signed out everywhere except: Devices you use to verify that it's you when you sign in. Some devices with third-party apps that you've given ...

Sign in if you lost your security key - Google Account Help

If your security key is lost, you can follow these steps to get back into your account and protect it. Choose the right steps for you depending on whether you've set up another second step like:

Get help signing in to YouTube - Google Help

How did you last sign in to your YouTube channel? I signed in with an email address I signed in with a YouTube username

Find lost photos & videos - Computer - Google Photos Help

Find lost photos & videos When you turn on backup, your photos are stored in photos.google.com. Important: If you're inactive in Google Photos for 2 years or more, your ...

Be ready to find a lost Android device - Android Help

You can use tracker tags to help keep track of and find lost items such as keys, luggage, bikes and more. You shouldn't use tracker tags to track pets or locate stolen items. Acceptable uses ...

Lock or erase your lost phone or computer

Lock or erase your lost phone or computer If your phone, tablet, or laptop is lost or stolen, follow these steps to help secure your device. If you can't get the device back, taking a few steps ...

Explore the thrilling adventures in 'The Lost World' by Michael Crichton. Uncover secrets of dinosaurs and survival. Learn more about this captivating tale!

[Back to Home](#)