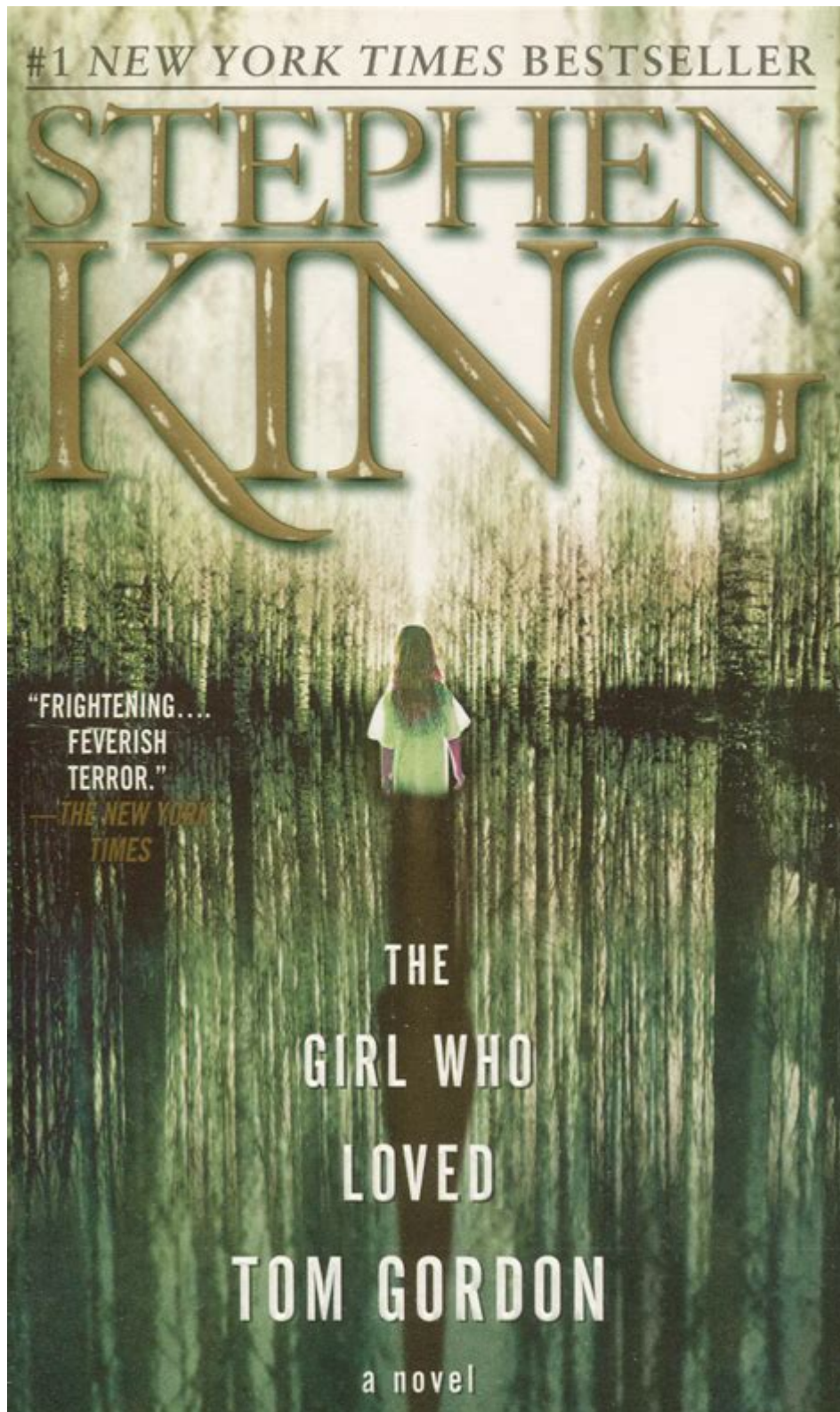


The Girl Who Loved Tom Gordon



The Girl Who Loved Tom Gordon is a gripping novel penned by the master of horror and suspense, Stephen King. Released in 1999, this psychological thriller weaves a narrative that encapsulates fear, survival, and the power of imagination. The story follows a young girl named Trisha McFarland, who becomes lost in the woods while on a hiking trip with her mother and brother. As she battles the elements, her love for baseball and her idol, the

Boston Red Sox pitcher Tom Gordon, becomes her beacon of hope. This article explores the themes, characters, and the profound impact of King's storytelling in this riveting tale.

Plot Summary

Setting the Scene

The novel begins with Trisha McFarland's family trip to a baseball game, where her admiration for Tom Gordon is established. The excitement of the game quickly turns into a family dispute, leading Trisha to wander off into the woods while attempting to find a way to escape the tension. The dense forest in the fictional town of Derry, Maine, becomes a character in itself, embodying both beauty and menace.

The Descent into Isolation

As Trisha ventures deeper into the woods, she quickly realizes that she is lost. The narrative captures her growing anxiety and fear as she tries to navigate her surroundings. Her isolation is palpable, and King's vivid descriptions of the forest enhance the sense of dread. Trisha's struggle for survival begins as she faces not only the elements but also her own inner demons.

Imaginary Companionship

In the midst of her ordeal, Trisha finds solace in her imagination, particularly in her thoughts about Tom Gordon. She visualizes him as a guiding figure, offering her encouragement and strength. This imaginative companionship highlights the theme of hope and the power of the mind in overcoming adversity. As Trisha battles hunger, fatigue, and fear, her connection to Tom Gordon becomes her lifeline.

Thematic Exploration

Isolation and Survival

One of the central themes of "The Girl Who Loved Tom Gordon" is isolation. Trisha's physical separation from civilization mirrors her emotional struggles and the universal fear of abandonment. The novel delves into the psychological aspects of being lost, showcasing how isolation can amplify fear and anxiety. Readers witness Trisha's transformation from a frightened girl into a resourceful survivor.

A few key points regarding isolation in the novel include:

- Physical Isolation: Trisha is separated from her family and the comfort of home, which intensifies her vulnerability.
- Emotional Isolation: Her struggles reflect a deeper sense of loneliness, as she grapples

with her identity and fears.

- Connection to Nature: The forest, while threatening, also offers moments of beauty and reflection, showcasing the duality of nature.

The Power of Imagination

Imagination serves as a crucial coping mechanism for Trisha. As she faces her fears, her thoughts of Tom Gordon provide her with the strength to persevere. This theme emphasizes how imagination can be a powerful tool for survival. Trisha's vivid daydreams offer her a sense of control and comfort in an otherwise chaotic situation.

Key aspects of this theme include:

- Escapism: Trisha's daydreams provide an escape from her dire circumstances, allowing her to momentarily forget her plight.
- Hope and Motivation: The thought of Tom Gordon inspires her to keep moving forward, demonstrating the significance of having someone to look up to.
- Self-Discovery: Through her imagination, Trisha learns more about herself, her resilience, and her capacity to endure hardships.

Character Analysis

Trisha McFarland

At the heart of the novel is Trisha, a young girl who embodies courage and determination. Her character development is central to the story, as she evolves from a scared child into a resourceful individual. Trisha's relatable struggles make her a compelling protagonist. King expertly captures her emotional turmoil, fears, and moments of bravery.

Characteristics of Trisha include:

- Resourcefulness: Trisha demonstrates ingenuity as she finds ways to survive, including foraging for food and creating makeshift shelters.
- Resilience: Her ability to keep going despite overwhelming odds showcases her inner strength and determination.
- Vulnerability: Trisha's fears and insecurities make her a relatable character, drawing readers into her plight.

Tom Gordon

Tom Gordon serves as both a real and imaginary figure in Trisha's life. As a professional baseball player, he represents the ideals of heroism and perseverance. His presence in Trisha's mind provides her with motivation and hope. King's portrayal of Tom Gordon transcends the realm of sports, symbolizing the importance of having role models in challenging times.

Key aspects of Tom Gordon's character include:

- Symbol of Hope: For Trisha, he embodies the hope of rescue and the belief in her ability to

survive.

- Heroic Persona: Tom's achievements in baseball inspire Trisha to envision herself as a fighter, mirroring his tenacity on the field.
- Connection to Reality: While Tom is a fictional character, his impact on Trisha's psyche highlights the power of idols in shaping our lives.

Writing Style and Literary Techniques

Stephen King's writing style in "The Girl Who Loved Tom Gordon" is marked by vivid imagery and psychological depth. He masterfully crafts a sense of place, bringing the forest to life and making it a formidable adversary. His use of first-person narrative allows readers to experience Trisha's thoughts and feelings intimately, creating a connection that enhances the overall impact of the story.

Notable literary techniques include:

- Stream of Consciousness: King employs a stream of consciousness technique, allowing readers to delve into Trisha's mind and experience her fears and hopes in real time.
- Symbolism: The forest symbolizes both danger and refuge, representing the duality of Trisha's journey.
- Imagery: King's descriptive language paints a vivid picture of the wilderness, immersing readers in Trisha's world.

Impact and Reception

"The Girl Who Loved Tom Gordon" has been well-received by both critics and readers. It is often praised for its psychological depth and character development. The novel stands out in King's oeuvre as a departure from traditional horror, focusing instead on the internal struggles of a young girl. The exploration of fear, hope, and resilience resonates with readers, making it a poignant tale of survival.

Key points regarding its impact include:

- Relatability: Trisha's journey reflects universal themes of fear and isolation, making it accessible to a wide audience.
- Psychological Insight: King's exploration of the human psyche adds layers to the narrative, encouraging readers to reflect on their own fears and coping mechanisms.
- Cultural References: The inclusion of baseball and the figure of Tom Gordon enriches the story, appealing to sports enthusiasts and highlighting the significance of cultural icons.

Conclusion

In conclusion, "The Girl Who Loved Tom Gordon" is a profound exploration of fear, survival, and the power of imagination. Stephen King's masterful storytelling and character development create a gripping narrative that captivates readers from start to finish. Trisha McFarland's journey through the wilderness serves as a testament to the strength of the

human spirit and the importance of hope in the face of adversity. Through this novel, King invites readers to reflect on their own fears and the coping mechanisms they employ, making it a timeless tale that resonates across generations.

Frequently Asked Questions

What is the main theme of 'The Girl Who Loved Tom Gordon'?

The main theme revolves around survival and the psychological struggles faced by a young girl lost in the wilderness, exploring her resilience and the power of hope.

How does the character of Tom Gordon influence the protagonist?

Tom Gordon, a famous baseball player, represents a source of comfort and strength for the protagonist, Trisha, as she imagines him guiding and supporting her through her ordeal.

What role does nature play in the story?

Nature acts as both an antagonist and a source of beauty in the story, providing a harsh and unforgiving environment that challenges Trisha while also offering moments of awe and reflection.

How does Stephen King use psychological elements in the novel?

Stephen King incorporates psychological horror by delving into Trisha's fears, loneliness, and the manifestations of her imagination, creating a tense atmosphere that heightens the sense of survival.

What is the significance of the ending of 'The Girl Who Loved Tom Gordon'?

The ending signifies a blend of hope and ambiguity, highlighting Trisha's journey back to safety while leaving readers to ponder the lasting effects of her traumatic experience.

Find other PDF article:

<https://soc.up.edu.ph/08-print/pdf?ID=YXk50-5143&title=balanced-and-barefoot-how-unrestricted-outdoor-play-makes-for-strong-confident-and-capable-children.pdf>

The Girl Who Loved Tom Gordon

□□□e-girl□ - □□

soft girl 2.vSCO girl
Egirl

何谓“DDLG”？ - 01

24 24 little girl Brat DOM DDLG

□□□□□□□□□□□□□□*Girl?* - □□

Girl? girl 14

□□□□□□□□□□ - □□

Nov 28, 2022 ·  ...

Roomgirl - 00

$\text{mod } 4$
 i
 db4
...

easy girl -

easy girl [00] 0000 000 4

Play home,HS2,ai -

□□□□HS2□□□□□□□□□□

seek girl□□□□dlc? - □□

2011 1 ...

□□□*Boy Meets Girl*□□□□□□□□□□□□□□ - □□

Dec 18, 2020 · [Boy Meets Girl](#) [Boy Meets Girl](#) [Fate/stay night](#) [BMG](#)... 26

□□□□Seek girl□□□ - □□

Seek Girl III IV 12 TOP5 Seek Girl III 9 11 3 4 8 Seek Girl IV 12 1 7 2 8 5. Seek Girl V VI VII 3

□□□e-girl□ - □□

soft girl softgirl 2.vSCO girl
vSCO girl Egirl ...

“DDLG”到底是什么? - 01

24 little girl Brat DOM ...

[illegible]

