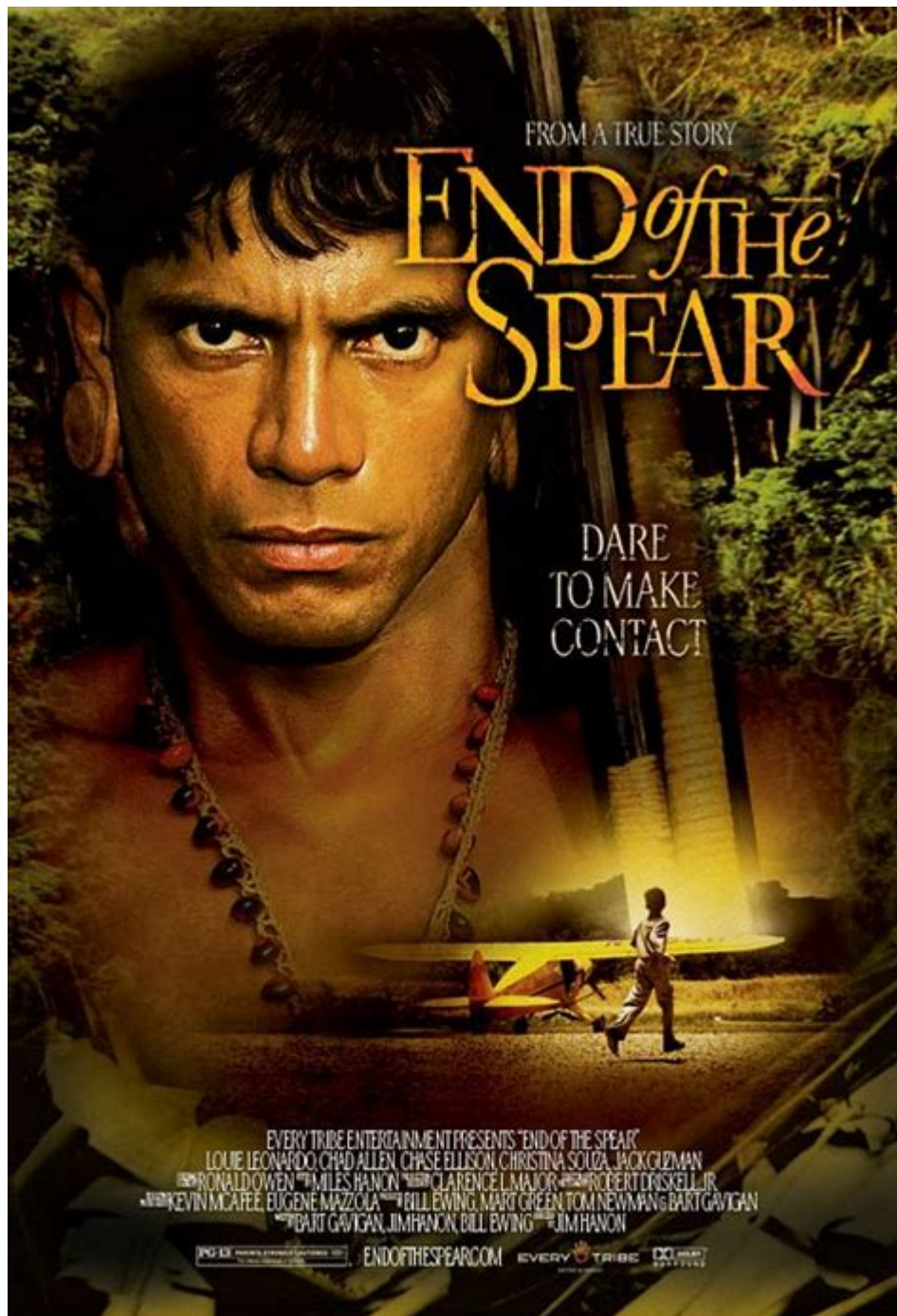


The End Of The Spear



The End of the Spear is a powerful narrative that intertwines faith, culture, and the complexities of human interaction. This story, which revolves around a tragic event in the Ecuadorian Amazon during the 1950s, has left a profound mark on both missionary work and the understanding of indigenous cultures. The events depicted in "The End of the Spear" challenge readers to consider the consequences of cultural encounters and the transformative power of forgiveness. This article delves into the historical context, the key figures involved, and the overarching themes of the story.

Historical Context

In the mid-20th century, the Amazon rainforest was largely unexplored and inhabited by various indigenous tribes, including the Waorani people. The Waorani were known for their fierce resistance to outsiders, often responding to intrusions with violence. In the 1950s, evangelical missionaries sought to reach these isolated tribes to share their beliefs and promote Christianity, leading to a series of events that would forever alter the lives of both the missionaries and the Waorani.

The Missionaries

The central figures in the story of "The End of the Spear" are five missionaries: Jim Elliot, Nate Saint, Ed McCully, Peter Fleming, and Roger Youderian. These men were part of a mission organization called the Evangelical Alliance Mission (TEAM). Their ambition was to reach the Waorani people, who had been largely untouched by modern civilization.

1. Jim Elliot - A graduate of Wheaton College, Elliot was deeply committed to missionary work and believed in the importance of spreading the Gospel to all people.
2. Nate Saint - An experienced pilot, Saint played a crucial role in delivering supplies to the remote jungle and facilitating contact with the Waorani.
3. Ed McCully, Peter Fleming, and Roger Youderian - These men shared Elliot and Saint's vision, each bringing unique skills that contributed to the mission's goals.

The Encounter

In January 1956, after months of preparation and initial contact attempts, the missionaries made their first successful landing on the banks of the Curaray River, which was inhabited by the Waorani. They established a friendly base known as "Palm Beach" and began to communicate with the tribe through gifts and gestures. However, the Waorani's deep-seated mistrust of outsiders lingered.

On January 8, 1956, the missionaries encountered a group of Waorani men. Despite their efforts to establish a peaceful relationship, tensions escalated. The missionaries were tragically killed by the Waorani warriors, marking a pivotal moment in history. This shocking event drew international attention and raised questions about the ethics of missionary work and cultural intrusion.

The Aftermath

The deaths of the five missionaries sent shockwaves through their families and the wider Christian community. However, the story did not end there. The aftermath led to significant developments that would change the course of the Waorani people and the missionaries' families.

The Role of Elisabeth Elliot

One of the most notable figures in the aftermath was Elisabeth Elliot, the widow of Jim Elliot. Elisabeth, alongside Rachel Saint, sister of Nate Saint, chose to return to the Waorani tribe two years after the tragedy. Their decision was driven by a desire to fulfill the missionaries' original mission of sharing the Gospel and to promote reconciliation.

Elisabeth and Rachel lived among the Waorani, learning their language and culture. They faced considerable challenges, including potential hostility from the tribe. However, their persistence and compassion gradually fostered trust, leading to a groundbreaking change in the Waorani community.

The Transformation of the Waorani Tribe

As Elisabeth and Rachel established relationships with the Waorani, they introduced new concepts of faith and community. The Waorani people began to embrace aspects of Christianity, leading to a profound transformation within the tribe. Key changes included:

- Cultural Exchange: The missionaries shared agricultural practices and health care, improving the quality of life for the Waorani.
- Conflict Resolution: The missionaries taught the Waorani about forgiveness, which helped reduce the violent conflicts that had plagued their society.
- Community Building: The introduction of Christian values fostered a sense of unity and purpose among the Waorani people.

The integration of these new ideas led to a significant decline in violence and a more cohesive community. The Waorani eventually became known for their peaceful interactions with outsiders, a drastic change from their previous reputation.

The Themes of "The End of the Spear"

"The End of the Spear" explores several profound themes that resonate with readers across generations. These themes encourage reflection on the complexities of human relationships and the impact of cultural exchanges.

Faith and Sacrifice

At the heart of the story lies a deep exploration of faith. The missionaries operated from a strong belief that spreading the Gospel was worth any personal sacrifice. This theme of sacrifice is evident in their willingness to risk their lives to reach the Waorani people. Their commitment raises important questions about the nature of faith and the lengths to which individuals will go for their beliefs.

Forgiveness and Reconciliation

The narrative also underscores the power of forgiveness and reconciliation. Elisabeth Elliot's decision to return to the Waorani exemplifies this theme, as she sought to bridge the divide created by violence. The subsequent transformation of the Waorani tribe into a community that embraced these values highlights the possibility of healing even in the aftermath of tragedy.

Cultural Understanding

"The End of the Spear" serves as a poignant reminder of the importance of cultural understanding. The initial encounter between the missionaries and the Waorani illustrates the dangers of cultural miscommunication. However, the later interactions between Elisabeth Elliot and the Waorani demonstrate that genuine relationships can be built through empathy, respect, and a willingness to learn.

Conclusion

"The End of the Spear" is more than just a recounting of a tragic event; it is a profound exploration of faith, sacrifice, and the potential for transformation. The story serves as a reminder of the complexities inherent in cultural encounters and the lasting impact of compassion and understanding. As we reflect on these events, we are encouraged to consider our own roles in fostering peace and reconciliation within our communities, emphasizing that even in the face of adversity, hope and healing are possible.

Frequently Asked Questions

What is the central theme of 'The End of the Spear'?

The central theme of 'The End of the Spear' revolves around forgiveness, redemption, and the transformative power of love in the face of violence and cultural differences.

Who are the main figures depicted in 'The End of the Spear'?

The main figures include missionary Jim Elliot and his colleagues, who sought to reach the Waodani tribe in Ecuador, and Mincaye, a Waodani warrior who plays a pivotal role in the story.

How does 'The End of the Spear' address the concept of cultural confrontation?

The book portrays cultural confrontation through the missionaries' encounter with the

Waadani tribe, highlighting the clash between their beliefs and practices, ultimately leading to a deeper understanding and respect.

What impact did 'The End of the Spear' have on Christian missions?

The book inspired many within the Christian community to consider the complexities of missionary work and the importance of cultural sensitivity, leading to a reevaluation of approaches in cross-cultural evangelism.

How does the narrative of 'The End of the Spear' challenge stereotypes about indigenous cultures?

The narrative challenges stereotypes by humanizing the Waodani people, showcasing their complexities, struggles, and the rich cultural context behind their actions, rather than depicting them as mere savages.

What role does forgiveness play in the storyline of 'The End of the Spear'?

Forgiveness is a crucial element, particularly in the aftermath of violence, as it illustrates how the families of the slain missionaries extend grace to their attackers, leading to reconciliation and transformation.

How has 'The End of the Spear' been received in popular culture?

The book has been well-received, leading to a film adaptation and discussions in both Christian and secular circles about its themes of faith, sacrifice, and the complexities of cultural interactions.

What lessons can be drawn from the experiences described in 'The End of the Spear'?

Lessons include the importance of understanding and respecting different cultures, the power of forgiveness, and the potential for personal transformation through love and faith in difficult circumstances.

Find other PDF article:

<https://soc.up.edu.ph/05-pen/files?docid=Anj05-3178&title=amazon-online-assessment-questions-2022.pdf>

[The End Of The Spear](#)

What does end=' ' in a print call exactly do? - Stack Overflow

Jul 16, 2023 · 1 In Python 3.x, the end=' ' is used to place a space after the displayed string instead of a newline. please refer this for a further explanation.

SQL "IF", "BEGIN", "END", "END IF"? - Stack Overflow

However, there is a special kind of SQL statement which can contain multiple SQL statements, the BEGIN-END block. If you omit the BEGIN-END block, your SQL will run fine, but it will only ...

End#####_####

End##### Home#####1#####END#####

Meaning of .Cells (.Rows.Count,"A").End (xlUp).row

Nov 21, 2014 · The End function starts at a cell and then, depending on the direction you tell it, goes that direction until it reaches the edge of a group of cells that have text. Meaning, if you ...

What does “~ (END)” mean when displayed in a terminal?

Jun 29, 2012 · END Command is used when a programmer finish writing programming language. Using the Command /END in the last line prevents the program from repeating the same ...

End of Central Directory record could not be found

System.IO.InvalidDataException: End of Central Directory record could not be found. In my case, the exception was thrown by the ZipArchive constructor when providing it with an input stream ...

Position last flex item at the end of container - Stack Overflow

328 This question concerns a browser with full css3 support including flexbox. I have a flex container with some items in it. They are all justified to flex-start but I want the last .end item to ...

What's the difference between "end" and "exit sub" in VBA?

Apr 8, 2016 · In VBA, sometimes we want to exit the program after some condition is true. But do I use end or exit sub?

How does C know the end of my string? - Stack Overflow

Apr 27, 2012 · It works! Anyway, according to Wikipedia, a string in C is a "Null-terminated string". I always thought this way and everything was good. But the problem is: we put no "null ...

How to stop one or multiple for loop (s) - Stack Overflow

EDITED: As a commenter pointed out, this does only end the inner loop. If you need to terminate both loops, there is no "easy" way (others have given you a few solutions).

What does end=' ' in a print call exactly do? - Stack Overflow

Jul 16, 2023 · 1 In Python 3.x, the end=' ' is used to place a space after the displayed string instead of a newline. please refer this for a further explanation.

SQL "IF", "BEGIN", "END", "END IF"? - Stack Overflow

However, there is a special kind of SQL statement which can contain multiple SQL statements, the BEGIN-END block. If you omit the BEGIN-END block, your SQL will run fine, but it will only ...

End#####_####

End##### Home#####1#####END#####

Meaning of .Cells (.Rows.Count,"A").End (xlUp).row

Nov 21, 2014 · The End function starts at a cell and then, depending on the direction you tell it, goes that direction until it reaches the edge of a group of cells that have text. Meaning, if you ...

What does “~ (END)” mean when displayed in a terminal?

Jun 29, 2012 · END Command is used when a programmer finish writing programming language. Using the Command /END in the last line prevents the program from repeating the same ...

End of Central Directory record could not be found

System.IO.InvalidDataException: End of Central Directory record could not be found. In my case, the exception was thrown by the ZipArchive constructor when providing it with an input stream ...

Position last flex item at the end of container - Stack Overflow

328 This question concerns a browser with full css3 support including flexbox. I have a flex container with some items in it. They are all justified to flex-start but I want the last .end item to ...

What's the difference between "end" and "exit sub" in VBA?

Apr 8, 2016 · In VBA, sometimes we want to exit the program after some condition is true. But do I use end or exit sub?

How does C know the end of my string? - Stack Overflow

Apr 27, 2012 · It works! Anyway, according to Wikipedia, a string in C is a "Null-terminated string". I always thought this way and everything was good. But the problem is: we put no "null ...

How to stop one or multiple for loop (s) - Stack Overflow

EDITED: As a commenter pointed out, this does only end the inner loop. If you need to terminate both loops, there is no "easy" way (others have given you a few solutions).

Explore "the end of the spear" and its profound impact on culture and history. Discover how this concept shapes modern leadership and influence. Learn more!

[Back to Home](#)