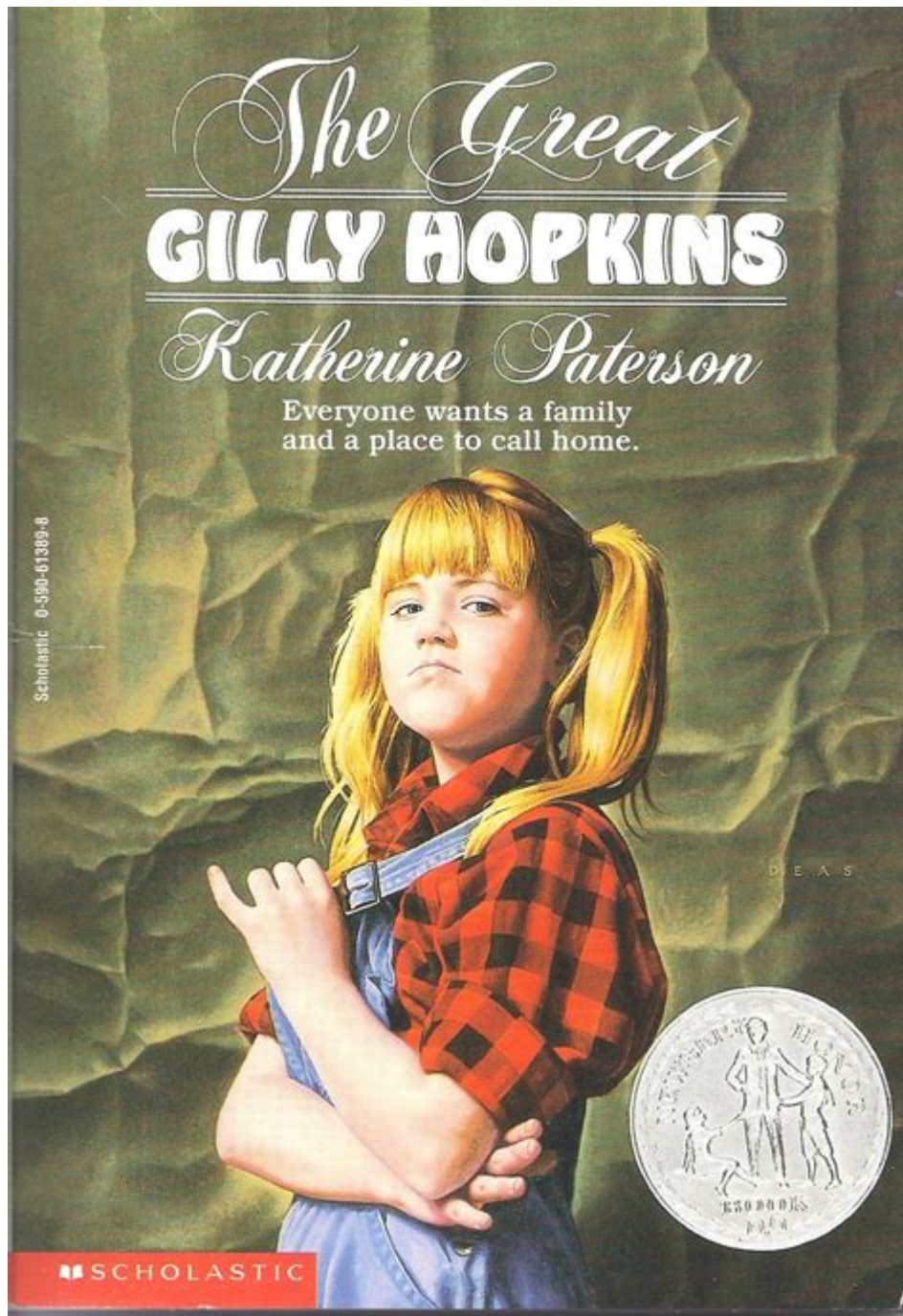


# The Great Gilly Hopkins



**The Great Gilly Hopkins** is a novel written by Katherine Paterson, published in 1978. This poignant story captures the struggles and triumphs of a young girl navigating the challenges of foster care and her yearning for belonging and acceptance. Through captivating storytelling, Paterson explores themes of identity, family, and resilience. This article delves into the characters, themes, and impact of "The Great Gilly Hopkins," as well as its adaptations and relevance in contemporary discussions about foster care and belonging.

# Plot Summary

"The Great Gilly Hopkins" follows the life of Gilly Hopkins, an eleven-year-old girl who has spent most of her life in the foster care system. Gilly is a fiercely independent and often troubled child, with a sharp tongue and a knack for manipulation. She has been placed in numerous foster homes, each time with the hope of finding a family, only to be disappointed by the experience.

When Gilly is placed with a new foster family, the Trotters, she is determined to escape her situation. The Trotters are a mismatched family unit: Maime Trotter is a single mother who embraces her unconventional lifestyle, while her son, William, is a kind-hearted boy with a developmental disability. Despite her initial disdain for her new surroundings, Gilly slowly begins to form connections with the Trotters and learns about the importance of love and acceptance.

As Gilly navigates her feelings of abandonment and her desire for a real family, the novel explores her journey toward self-discovery and acceptance. Throughout the story, Gilly grapples with her past experiences and ultimately learns valuable lessons about loyalty, friendship, and what it means to truly belong.

## Character Analysis

The characters in "The Great Gilly Hopkins" are richly developed, each contributing to the story's deeper themes and messages. Here is a closer look at some of the key characters:

### Gilly Hopkins

Gilly is a complex protagonist. She is resourceful and witty, often using her sharp tongue to shield her vulnerabilities. Her past experiences have made her defensive and distrustful, but as the story unfolds, Gilly learns to confront her fears and embrace the possibility of love. Her character arc is at the heart of the novel, illustrating her growth from a hardened girl to someone capable of forming genuine connections.

### Maime Trotter

Maime Trotter is Gilly's foster mother, who embodies the spirit of acceptance and love. Despite her unconventional ways and financial difficulties, Maime provides a nurturing environment for Gilly. Her character challenges societal norms and showcases the importance of embracing individuality within a family. Maime's patience and understanding play a crucial role in Gilly's transformation.

### William Trotter

William, Maime's son, is another pivotal character who influences Gilly's development. Despite his challenges due to a developmental disability, William is kind-hearted and authentic. His unconditional love and acceptance help Gilly to see the value of forming genuine relationships. Through William, Gilly learns that family isn't solely defined by blood but by the bonds we create.

# Themes Explored

“The Great Gilly Hopkins” delves into several powerful themes that resonate with readers of all ages. Here are some of the most prominent themes in the novel:

## Identity and Belonging

The quest for identity and belonging is central to Gilly's journey. Throughout the novel, she grapples with her sense of self and what it means to belong to a family. Gilly's experiences in the foster care system have left her feeling isolated and unwanted, but her time with the Trotters challenges her perspective. The theme of belonging is explored through Gilly's relationships with Maime and William, as they help her realize that family can be defined by love and acceptance rather than mere genetics.

## Resilience and Growth

Gilly's resilience is a testament to the human spirit. Despite her difficult circumstances, she demonstrates strength and tenacity in her quest for independence. The novel illustrates that personal growth often comes through facing challenges and overcoming obstacles. Gilly's journey teaches readers about the importance of resilience, as she learns to navigate her emotions and embrace change.

## Family and Love

The concept of family is central to the narrative. Gilly initially views family as something she has lost, but her experiences with the Trotters redefine her understanding of familial love. The novel emphasizes that love can manifest in various forms and that true family bonds are built on trust, care, and acceptance.

## Impact and Reception

“The Great Gilly Hopkins” has received critical acclaim since its publication. It was awarded the Newbery Honor in 1979 and has been recognized for its sensitive portrayal of complex issues related to foster care and childhood trauma. The novel's relatable characters and heartfelt narrative have resonated with readers, making it a beloved classic in children's literature.

The book has also sparked conversations about the foster care system and the emotional struggles faced by many children in similar situations. It encourages readers to empathize with the experiences of others and to understand the importance of providing loving, supportive environments for children in need.

## Adaptations

Over the years, “The Great Gilly Hopkins” has been adapted for various media, including a film

released in 2015. Directed by Stephen Herek, the movie brings Gilly's story to life with a talented cast. The adaptation stays true to the essence of the novel while making some changes to suit the cinematic format. This film introduced Gilly's story to a new generation, allowing her struggles and triumphs to resonate with audiences beyond the pages of the book.

## Conclusion

In conclusion, "The Great Gilly Hopkins" is a powerful narrative that provides insight into the struggles of a young girl searching for identity, belonging, and love. Katherine Paterson's masterful storytelling, combined with richly developed characters and profound themes, makes this novel a timeless classic. Through Gilly's journey, readers are reminded of the importance of resilience, the complexity of family dynamics, and the transformative power of love and acceptance.

As discussions surrounding foster care and childhood trauma continue to evolve, "The Great Gilly Hopkins" remains a relevant and important work. It encourages empathy, understanding, and a deeper appreciation for the diverse experiences of children within the foster care system. Ultimately, Gilly's story is a celebration of the human spirit and the enduring quest for belonging.

## Frequently Asked Questions

### What is the main theme of 'The Great Gilly Hopkins'?

The main theme of 'The Great Gilly Hopkins' is the struggle for belonging and identity, as Gilly navigates her relationships and the concept of family throughout her journey.

### Who is the author of 'The Great Gilly Hopkins'?

The author of 'The Great Gilly Hopkins' is Katherine Paterson.

### What challenges does Gilly face in the foster care system?

Gilly faces numerous challenges in the foster care system, including feelings of abandonment, her rebellious nature, and the difficulty of forming attachments with her foster family.

### How does Gilly's character evolve throughout the story?

Gilly evolves from a tough, defiant girl who pushes people away to someone who learns to accept love and form genuine connections with others.

### What role does Ms. Ellis play in Gilly's life?

Ms. Ellis is Gilly's foster mother who provides her with care and support, challenging Gilly's preconceived notions about family and acceptance.

### What significance does the character of William represent in

## **the story?**

William represents the idea of unconditional love and acceptance, showing Gilly that true family can come in unexpected forms.

## **How does 'The Great Gilly Hopkins' address issues of prejudice?**

The book addresses issues of prejudice through Gilly's interactions with her foster family and peers, highlighting the importance of understanding and compassion.

## **What literary devices are prominent in 'The Great Gilly Hopkins'?**

Prominent literary devices in the book include characterization, dialogue, and irony, which help to convey Gilly's internal struggles and the dynamics of her relationships.

## **What is the significance of Gilly's relationship with her biological mother?**

Gilly's relationship with her biological mother is significant as it shapes her feelings of abandonment and affects her ability to trust and connect with others.

## **Why is 'The Great Gilly Hopkins' considered a classic in children's literature?**

It is considered a classic due to its heartfelt exploration of complex themes such as identity, family, and acceptance, resonating with both children and adults alike.

Find other PDF article:

<https://soc.up.edu.ph/20-pitch/Book?dataid=wPC99-6276&title=enid-blyton-stories-for-bedtime.pdf>

## **The Great Gilly Hopkins**

*Create a Gmail account - Gmail Help - Google Help*

Important: Before you set up a new Gmail account, make sure to sign out of your current Gmail account. Learn how to sign out of Gmail. From your device, go to the Google Account sign in ...

*Now is the time for a 'great reset' - World Economic Forum*

Jun 3, 2020 · Visit the Great Reset microsite here. Hear Klaus Schwab on these podcast episodes: the Great Reset launch and his book. We can emerge from this crisis a better world, ...

*The Great Salt Lake is shrinking - NASA satellite images | World ...*

Aug 31, 2022 · The famous Great Salt Lake in the United States has shrunk almost 7 metres since

1985 - because of population growth and climate change, says NASA.

*4 great leaders who had mental health problems - The World ...*

Oct 9, 2015 · The World Economic Forum is an independent international organization committed to improving the state of the world by engaging business, political, academic and other leaders ...

What is a recession and how to tell if one is happening

Feb 19, 2024 · As two advanced economies slip into recession, economists warn of uncertain times ahead. But what is a recession and how can we tell if one is happening?

*These are the 10 principles that make good leadership great*

Oct 10, 2023 · Today, in the private and public sectors, our leaders are becoming more diverse and less conventional. For these leaders, and those who aspire for the top spot one day, these ...

What makes a great teacher? | World Economic Forum

Oct 6, 2021 · Great teachers are context-specific Would the teachers working in schools relying on these theories be considered 'great' for implementing such strategies? Here is the real ...

### **Chat Support Help**

Official Chat Support Help Center where you can find tips and tutorials on using Chat Support and other answers to frequently asked questions.

HRH the Prince of Wales and other leaders on the Forum's Great ...

Jun 3, 2020 · The Great Reset - the theme of Davos 2021 - is a commitment to jointly and urgently build the foundations of our economic and social system for a more fair, sustainable ...

### **COVID-19: The 4 building blocks of the Great Reset**

Aug 11, 2020 · The Great Reset • New ideas are needed to catalyze the Great Reset after COVID-19.

• Change can be as simple as adjusting our mindsets. • Greater connection ...

*Create a Gmail account - Gmail Help - Google Help*

Important: Before you set up a new Gmail account, make sure to sign out of your current Gmail account. Learn how to sign out of Gmail. From your device, go to the Google Account sign in page. Click Create account. In the drop down, select if the account is for your: Personal use Child Work or business To set up your account, follow the steps on the screen.

Now is the time for a 'great reset' - World Economic Forum

Jun 3, 2020 · Visit the Great Reset microsite here. Hear Klaus Schwab on these podcast episodes: the Great Reset launch and his book. We can emerge from this crisis a better world, if we act quickly and jointly, writes Schwab. The changes we have already seen in response to COVID-19 prove that a reset of our economic and social foundations is possible. This is our ...

The Great Salt Lake is shrinking - NASA satellite images | World ...

Aug 31, 2022 · The famous Great Salt Lake in the United States has shrunk almost 7 metres since 1985 - because of population growth and climate change, says NASA.

*4 great leaders who had mental health problems - The World ...*

Oct 9, 2015 · The World Economic Forum is an independent international organization committed to improving the state of the world by engaging business, political, academic and other leaders of society to shape global, regional and industry agendas. Incorporated as a not-for-profit foundation in 1971, and headquartered in Geneva, Switzerland, the Forum is tied to no political, partisan ...

*What is a recession and how to tell if one is happening*

Feb 19, 2024 · As two advanced economies slip into recession, economists warn of uncertain times ahead. But what is a recession and how can we tell if one is happening?

### **These are the 10 principles that make good leadership great**

Oct 10, 2023 · Today, in the private and public sectors, our leaders are becoming more diverse and less conventional. For these leaders, and those who aspire for the top spot one day, these 10 characteristics are where they should focus their development. At their core, they require soft skills and the ability to make smart, empathetic decisions under pressure.

What makes a great teacher? | World Economic Forum

Oct 6, 2021 · Great teachers are context-specific Would the teachers working in schools relying on these theories be considered 'great' for implementing such strategies? Here is the real problem: teaching only means something within its defined context. This goes beyond a simplistic judgement of institutions' positions on what good learning and teaching is.

### **Chat Support Help**

Official Chat Support Help Center where you can find tips and tutorials on using Chat Support and other answers to frequently asked questions.

### **HRH the Prince of Wales and other leaders on the Forum's Great ...**

Jun 3, 2020 · The Great Reset - the theme of Davos 2021 - is a commitment to jointly and urgently build the foundations of our economic and social system for a more fair, sustainable and resilient post-COVID future.

COVID-19: The 4 building blocks of the Great Reset

Aug 11, 2020 · The Great Reset • New ideas are needed to catalyze the Great Reset after COVID-19.  
• Change can be as simple as adjusting our mindsets. • Greater connection between leaders and the people, and between people, has the potential to effect the most change.

Discover the inspiring journey of 'The Great Gilly Hopkins' as she navigates foster care and finds her place in the world. Learn more about this touching story!

[Back to Home](#)