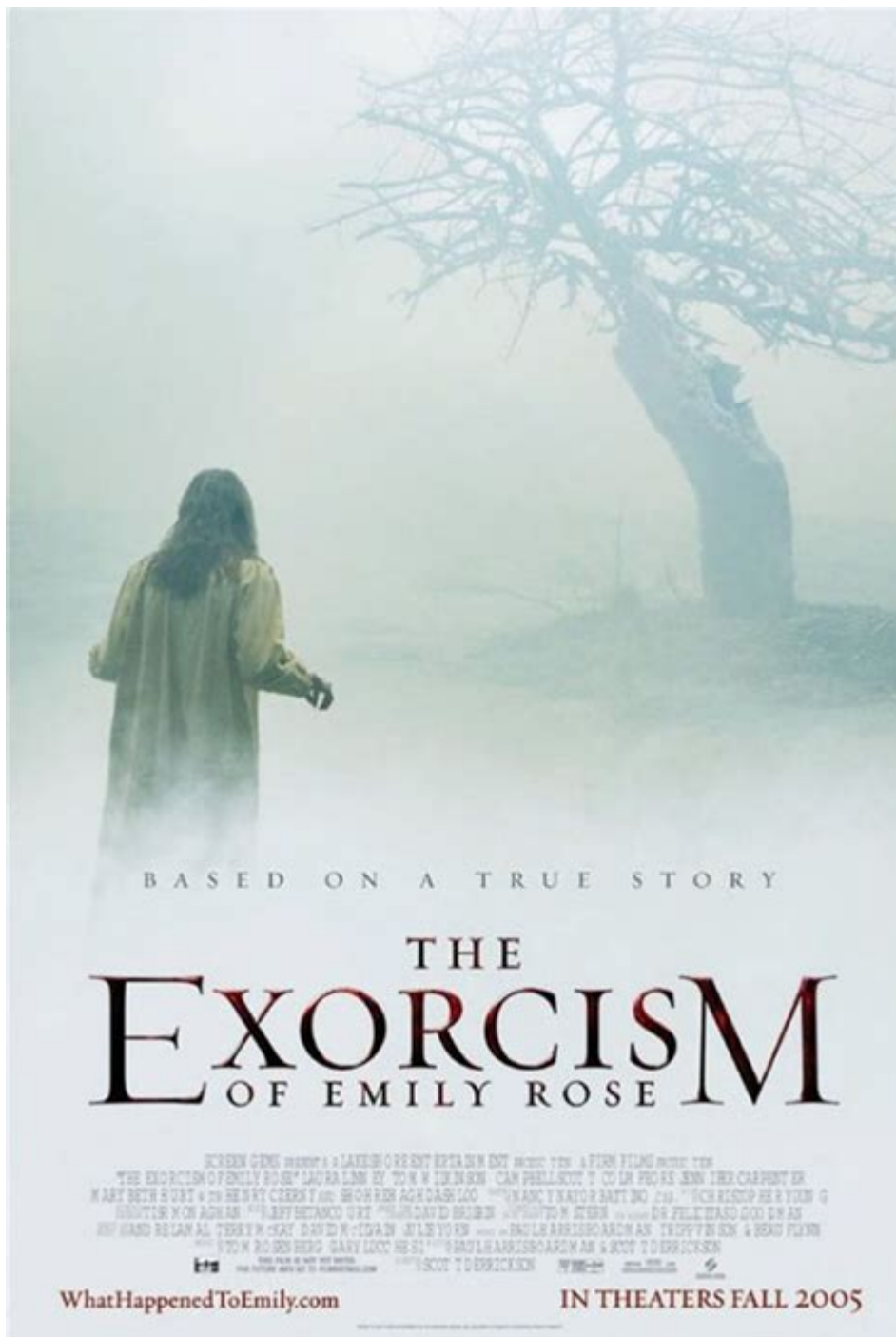


# The Exorcism Of Emily Rose Parents Guide



**THE EXORCISM OF EMILY ROSE PARENTS GUIDE** PROVIDES ESSENTIAL INSIGHTS FOR PARENTS CONSIDERING WHETHER THIS FILM IS SUITABLE FOR THEIR TEENS. RELEASED IN 2005, "THE EXORCISM OF EMILY ROSE" IS A SUPERNATURAL HORROR-DRAMA FILM THAT EXPLORES THE TRUE STORY OF A YOUNG WOMAN, EMILY ROSE, WHO UNDERWENT AN EXORCISM. BASED ON REAL-LIFE EVENTS, THE FILM RAISES QUESTIONS ABOUT FAITH, MENTAL HEALTH, AND THE NATURE OF EVIL, MAKING IT BOTH COMPELLING AND CONTROVERSIAL. THIS ARTICLE AIMS TO OFFER A COMPREHENSIVE GUIDE FOR PARENTS, DETAILING THE FILM'S THEMES, CONTENT WARNINGS, AND POTENTIAL DISCUSSION POINTS TO HELP FAMILIES NAVIGATE ITS COMPLEX NARRATIVE.

# UNDERSTANDING THE FILM'S PREMISE

"THE EXORCISM OF EMILY ROSE" BLENDS COURTROOM DRAMA WITH HORROR ELEMENTS, FOLLOWING THE TRIAL OF A PRIEST ACCUSED OF NEGLIGENT HOMICIDE AFTER PERFORMING AN EXORCISM ON EMILY ROSE. THE FILM OSCILLATES BETWEEN FLASHBACKS OF EMILY'S TORMENT AND THE COURTROOM PROCEEDINGS WHERE THE PROSECUTION ARGUES THAT HER DEATH RESULTED FROM THE PRIEST'S ACTIONS.

## KEY THEMES EXPLORED

THE FILM DELVES INTO SEVERAL SIGNIFICANT THEMES, INCLUDING:

- **FAITH VS. SCIENCE:** THE FILM PRESENTS A DICHOTOMY BETWEEN RELIGIOUS BELIEFS AND SCIENTIFIC EXPLANATIONS OF MENTAL HEALTH ISSUES.
- **GOOD VS. EVIL:** THE STRUGGLE BETWEEN LIGHT AND DARKNESS IS A CENTRAL MOTIF, WITH CHARACTERS REPRESENTING VARIOUS VIEWPOINTS ON THE NATURE OF EVIL.
- **PARENTAL RESPONSIBILITY:** THE ROLE OF EMILY'S PARENTS IN HER TREATMENT AND THEIR BELIEFS ABOUT HER CONDITION ARE CRUCIAL TO THE NARRATIVE.

## CONTENT WARNINGS

BEFORE WATCHING "THE EXORCISM OF EMILY ROSE," PARENTS SHOULD BE AWARE OF THE FOLLOWING CONTENT WARNINGS:

### 1. GRAPHIC IMAGERY AND VIOLENCE

THE FILM CONTAINS DISTURBING SCENES DEPICTING EMILY'S POSSESSION, INCLUDING:

- PHYSICAL CONTORTIONS
- VISCERAL IMAGERY ASSOCIATED WITH HER SUFFERING
- SCENES OF SELF-HARM AND DISTRESS

WHILE THE FILM DOES NOT SHOWCASE EXTREME GORE, THE PSYCHOLOGICAL HORROR AND EMOTIONAL INTENSITY MAY BE UNSETTLING FOR YOUNGER VIEWERS.

### 2. THEMES OF MENTAL ILLNESS

THE PORTRAYAL OF EMILY'S STRUGGLES MAY RESONATE WITH SOME VIEWERS WHO HAVE EXPERIENCED OR KNOW SOMEONE DEALING WITH MENTAL HEALTH ISSUES. THE FILM RAISES IMPORTANT QUESTIONS ABOUT:

- THE STIGMA SURROUNDING MENTAL ILLNESS

- THE POTENTIAL FOR MISDIAGNOSIS
- THE INTERSECTION OF FAITH AND HEALTHCARE

PARENTS SHOULD CONSIDER DISCUSSING THESE THEMES WITH THEIR CHILDREN TO FOSTER UNDERSTANDING AND COMPASSION.

### 3. LANGUAGE AND MATURE THEMES

THERE IS SOME USE OF STRONG LANGUAGE AND MATURE THEMES THROUGHOUT THE FILM, INCLUDING:

- REFERENCES TO DEMONIC POSSESSION
- RELIGIOUS DISCUSSIONS THAT MAY NOT BE SUITABLE FOR ALL AGE GROUPS
- LEGAL AND ETHICAL DILEMMAS

PARENTS SHOULD WEIGH THE MATURITY LEVEL OF THEIR TEENS WHEN DECIDING IF THIS FILM IS APPROPRIATE.

## VIEWER AGE RECOMMENDATIONS

WHILE THE FILM IS RATED PG-13, PARENTS ARE ENCOURAGED TO ASSESS THEIR CHILD'S EMOTIONAL MATURITY AND SENSITIVITY TO HORROR FILMS. HERE ARE SOME RECOMMENDATIONS BASED ON AGE GROUPS:

### UNDER 13 YEARS OLD

FOR CHILDREN UNDER 13, IT IS GENERALLY ADVISABLE TO AVOID THE FILM DUE TO ITS INTENSE THEMES, GRAPHIC IMAGERY, AND COMPLEX DISCUSSIONS SURROUNDING FAITH AND MENTAL HEALTH. PARENTS MAY OPT FOR AGE-APPROPRIATE ALTERNATIVES THAT ADDRESS SIMILAR THEMES IN A MORE DIGESTIBLE FORMAT.

### 13-15 YEARS OLD

FOR TEENS AGED 13 TO 15, PARENTAL GUIDANCE IS CRUCIAL. CONSIDER WATCHING THE MOVIE TOGETHER AND ENGAGING IN DISCUSSIONS AFTERWARD. IT CAN SERVE AS A SPRINGBOARD FOR CONVERSATIONS ABOUT FAITH, MENTAL HEALTH, AND PERSONAL BELIEFS.

### 16 YEARS AND OLDER

TEENS AGED 16 AND OLDER MAY HANDLE THE FILM'S THEMES WITH GREATER MATURITY. HOWEVER, IT'S STILL ESSENTIAL FOR PARENTS TO DISCUSS THE FILM'S CONTENT, ENSURING THAT THEY CAN PROCESS ANY CHALLENGING THEMES OR EMOTIONS THAT ARISE.

# DISCUSSION POINTS FOR FAMILIES

AFTER WATCHING "THE EXORCISM OF EMILY ROSE," PARENTS MAY WANT TO ENGAGE THEIR TEENS IN DISCUSSIONS ABOUT THE FILM. HERE ARE SOME POTENTIAL TOPICS:

## 1. THE NATURE OF EVIL

ASK YOUR TEEN ABOUT THEIR INTERPRETATION OF EVIL AS PORTRAYED IN THE FILM. WHAT DO THEY BELIEVE ARE THE SOURCES OF EVIL? HOW DO FAITH AND PERSONAL BELIEF SYSTEMS INFLUENCE THEIR UNDERSTANDING OF THIS CONCEPT?

## 2. MENTAL HEALTH AND MISDIAGNOSIS

DISCUSS THE FILM'S PORTRAYAL OF EMILY'S STRUGGLES WITH MENTAL ILLNESS. HOW DOES THE FILM ADDRESS THE CHALLENGES OF DIAGNOSING MENTAL HEALTH ISSUES? WHAT CAN BE DONE TO REDUCE STIGMA SURROUNDING MENTAL HEALTH?

## 3. FAITH AND SCIENCE

ENCOURAGE A CONVERSATION ABOUT THE BALANCE BETWEEN FAITH AND SCIENCE. HOW DO YOUR FAMILY'S BELIEFS SHAPE YOUR UNDERSTANDING OF MENTAL ILLNESS AND SUPERNATURAL EVENTS? HOW CAN BOTH PERSPECTIVES COEXIST?

## 4. PARENTAL RESPONSIBILITY

EXPLORE THE ROLE OF EMILY'S PARENTS IN HER TREATMENT. WERE THEIR DECISIONS JUSTIFIED? WHAT CAN PARENTS DO TO SUPPORT THEIR CHILDREN FACING HEALTH ISSUES, WHETHER MENTAL OR PHYSICAL?

## CONCLUSION

IN CONCLUSION, **THE EXORCISM OF EMILY ROSE PARENTS GUIDE** SERVES AS A VITAL RESOURCE FOR FAMILIES CONTEMPLATING WHETHER TO WATCH THIS THOUGHT-PROVOKING FILM. BY UNDERSTANDING ITS THEMES, CONTENT WARNINGS, AND POTENTIAL DISCUSSION POINTS, PARENTS CAN MAKE INFORMED DECISIONS THAT ALIGN WITH THEIR FAMILY'S VALUES. THE FILM OFFERS A UNIQUE OPPORTUNITY FOR DIALOGUE ON SIGNIFICANT ISSUES, MAKING IT AN ENGAGING YET CHALLENGING WATCH FOR OLDER TEENS. ALWAYS REMEMBER TO APPROACH SENSITIVE TOPICS WITH CARE, ENSURING THAT DISCUSSIONS FOSTER UNDERSTANDING, EMPATHY, AND CRITICAL THINKING.

## FREQUENTLY ASKED QUESTIONS

### WHAT AGE RATING IS 'THE EXORCISM OF EMILY ROSE'?

THE FILM IS RATED PG-13 FOR DISTURBING THEMATIC MATERIAL, INCLUDING VIOLENCE AND SOME INTENSE SEQUENCES.

### IS 'THE EXORCISM OF EMILY ROSE' BASED ON A TRUE STORY?

YES, THE FILM IS INSPIRED BY THE TRUE STORY OF ANNELIESE MICHEL, A YOUNG WOMAN WHO UNDERWENT AN EXORCISM IN THE 1970s.

## WHAT ARE THE MAIN THEMES OF 'THE EXORCISM OF EMILY ROSE'?

THE FILM EXPLORES THEMES OF FAITH, THE CONFLICT BETWEEN SCIENCE AND RELIGION, AND THE NATURE OF EVIL.

## ARE THERE ANY GRAPHIC SCENES THAT PARENTS SHOULD BE AWARE OF?

YES, THE FILM CONTAINS SOME INTENSE AND POTENTIALLY DISTURBING SCENES, INCLUDING DEPICTIONS OF POSSESSION AND EXORCISM RITUALS.

## IS THERE STRONG LANGUAGE IN 'THE EXORCISM OF EMILY ROSE'?

THERE IS SOME STRONG LANGUAGE, BUT IT IS NOT OVERLY EXCESSIVE, CONTRIBUTING TO THE OVERALL SERIOUS TONE OF THE FILM.

## CAN 'THE EXORCISM OF EMILY ROSE' BE SUITABLE FOR YOUNGER VIEWERS?

WHILE IT'S RATED PG-13, PARENTS SHOULD CONSIDER WHETHER THEIR CHILDREN ARE MATURE ENOUGH TO HANDLE THE FILM'S THEMES AND INTENSE MOMENTS.

## WHAT SHOULD PARENTS DISCUSS WITH THEIR TEENS AFTER WATCHING THE FILM?

PARENTS SHOULD DISCUSS THE FILM'S PORTRAYAL OF MENTAL HEALTH, FAITH VERSUS SKEPTICISM, AND THE ETHICAL IMPLICATIONS OF EXORCISM.

## IS THERE A LOT OF SUSPENSE OR HORROR IN 'THE EXORCISM OF EMILY ROSE'?

YES, THE FILM CONTAINS SUSPENSEFUL AND HORROR ELEMENTS, BUT IT IS ALSO A COURTROOM DRAMA, BALANCING SUPERNATURAL EVENTS WITH LEGAL PROCEEDINGS.

Find other PDF article:

<https://soc.up.edu.ph/10-plan/files?ID=Vpj49-3284&title=brave-blue-world-worksheet.pdf>

## The Exorcism Of Emily Rose Parents Guide

### ChatGPT

Nous voudrions effectuer une description ici mais le site que vous consultez ne nous en laisse pas la possibilité.

### *Introducing ChatGPT - OpenAI*

Nov 30, 2022 · We've trained a model called ChatGPT which interacts in a conversational way. The dialogue format makes it possible for ChatGPT to answer followup questions, admit its ...

### ChatGPT - ChatBot IA d'OpenAI en Français

ChatGPT est une intelligence artificielle conçue par OpenAI. Découvrez ce qu'est ChatGPT, à quoi il sert et comment l'utiliser en français.

### À propos de ChatGPT

Grâce à sa capacité à comprendre et répondre en plusieurs langues, ChatGPT est un outil polyvalent pour les étudiants, les professionnels et les entreprises. Il peut aider à la recherche ...

*Comment utiliser ChatGPT au quotidien - LeBigData.fr*

Jun 19, 2025 · Pour utiliser ChatGPT en français, rédigez systématiquement vos instructions dans cette langue et indiquez explicitement au chatbot de répondre en français.

### **ChatGPT - Applications sur Google Play**

Lancement de ChatGPT : les dernières innovations d'OpenAI à portée de main. Cette appli officielle est gratuite, synchronise votre historique sur tous les appareils et met à votre ...

### **ChatGPT — Wikipédia**

L'application mobile ChatGPT, lancée en mai 2023 sur iOS 15 et ensuite sur Android 16, intègre une technologie de reconnaissance vocale nommée Whisper qui permet de converser par la ...

### Que faire avec ChatGPT ? Les cas concrets

2 days ago · Que faire avec ChatGPT ? À quoi sert ChatGPT exactement et comment fonctionne-t-il ? Découvrez dans cet article tout ce qu'il faut savoir sur ChatGPT, son mode de ...

### **ChatGPT : définition, fonctionnement et limites**

Jun 9, 2025 · ChatGPT : c'est quoi ? ChatGPT n'est autre qu'un modèle de NLP (Traitement automatique du langage naturel) qu'OpenAI a développé. On parle alors d'un modèle d' ...

### *Qu'est-ce que ChatGPT ? - ChatGPT info*

ChatGPT est un agent conversationnel créé par OpenAI. Il utilise l'intelligence artificielle pour générer des réponses naturelles aux questions des utilisateurs.

### Revolutionizing Obesity Treatment | Metsera

We are a clinical-stage biotechnology company focused on engineering, developing, manufacturing, and ultimately commercializing a new generation of potent, ultra-long acting, scalable nutrient ...

### **Why this newly public biotech could become a force in obesity ...**

Feb 25, 2025 · Metsera Inc. (MTSR), a New York-based biotech that went public on Jan. 31 with some fanfare, has a full portfolio of weight-loss drugs in development, using both the hormones ...

### *Google Ventures-Backed Biotech Metsera Seeks \$292 Million in IPO*

Jan 27, 2025 · Metsera is a clinical-stage biotechnology company developing injectable and oral treatments for obesity and related conditions, the filing shows.

### Metsera, a well-funded obesity drug startup, sees chance to ...

Apr 18, 2024 · Metsera, a richly funded biotechnology startup, launched Thursday with a portfolio of weight loss drugs the company claims could eventually compete with market-leading ...

### **With \$290M in hand, newly emerged biotech Metsera ... - Biotech ...**

Aug 2, 2024 · Clinical-stage Metsera has emerged from stealth with \$290 million in hand and the bold vision of ushering in the next generation of obesity and metabolic disease medicines. "It's ...

### Metsera's Successful IPO: A New Dawn for Innovative ...

Feb 5, 2025 · As the biotechnology sector remains a hotbed for investment, especially in obesity treatments amidst rising rates of obesity and related health issues, Metsera appears well ...

### **New obesity biotech Metsera jumps into weight loss race with ...**

Apr 3, 2024 · Funded with \$350 million from top-tier VCs and led by a veteran pharma CEO, a new obesity startup called Metsera has been quietly building plans to get multiple drugs into ...

## **Metsera Reports Second Quarter 2025 Financial Results and ...**

21 hours ago · Metsera Reports Second Quarter 2025 Financial Results and Continued Portfolio Progress Jul. 28, 2025 4:01 PM ET Metsera, Inc. (MTSR)

## **Weight-Loss Drug Startup Metsera Launches with \$290M, Looks ...**

Apr 18, 2024 · The biotech was founded in 2022 by venture capital firms ARCH Venture Partners and Population Health Partners and is led by former executives from The Medicines Company, ...

*Why this newly public biotech could become a force in obesity ...*

Feb 25, 2025 · Metsera Inc. MTSR, a New York-based biotech that went public on Jan. 31 with some fanfare, has a full portfolio of weight-loss drugs in development, using both the hormones ...

Explore our comprehensive parents guide for "The Exorcism of Emily Rose." Get insights on themes

[Back to Home](#)