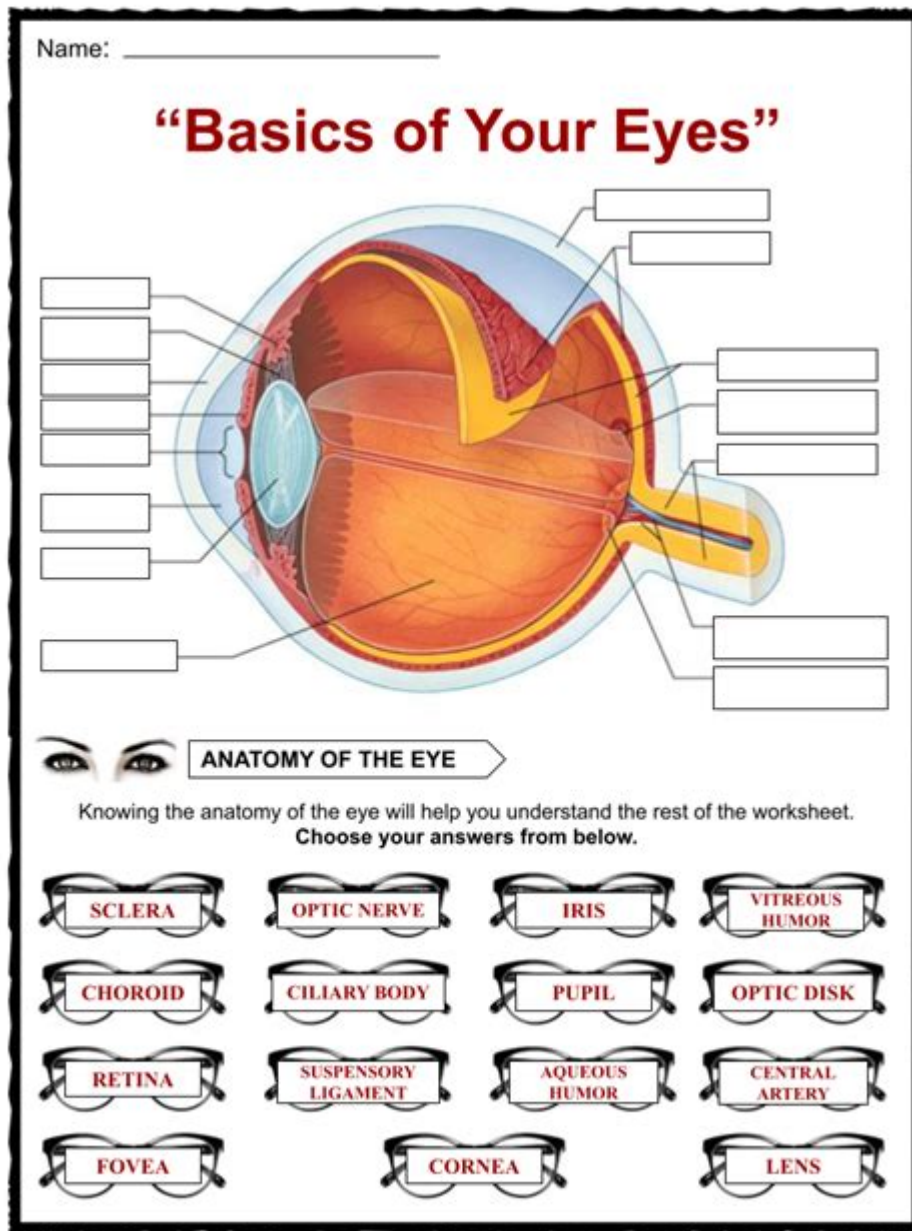


# The Eye And Vision Anatomy Worksheet



**The eye and vision anatomy worksheet** serves as an essential educational tool for students and educators alike, offering a detailed insight into the complex structure and functions of the human eye. Understanding the anatomy of the eye is crucial for various fields, including biology, medicine, and optometry. This article will explore the components of the eye, their functions, and the importance of utilizing worksheets in learning about eye anatomy and vision.

## Understanding the Anatomy of the Eye

The human eye is a remarkable organ that allows us to perceive the world

around us through the sense of sight. It is composed of several parts, each with a specific function that contributes to the process of vision. Below are the primary components of the eye:

## **1. Cornea**

The cornea is the transparent front layer of the eye that covers the iris and pupil. It plays a vital role in focusing light onto the retina.

## **2. Iris**

The iris is the colored part of the eye that controls the amount of light entering the eye by adjusting the size of the pupil. This muscle responds to light intensity and helps protect the retina from excessive light exposure.

## **3. Pupil**

The pupil is the opening in the center of the iris that allows light to enter the eye. Its size can change in response to different lighting conditions, dilating in low light and constricting in bright light.

## **4. Lens**

The lens is a flexible, transparent structure located behind the iris that further focuses light onto the retina. It changes shape to allow for focusing on objects at various distances—a process known as accommodation.

## **5. Retina**

The retina is the light-sensitive layer at the back of the eye that contains photoreceptor cells (rods and cones). These cells convert light into neural signals that are sent to the brain for visual processing.

## **6. Optic Nerve**

The optic nerve transmits visual information from the retina to the brain. It is responsible for carrying the signals that allow us to perceive images.

## **7. Vitreous Humor**

The vitreous humor is a gel-like substance that fills the space between the lens and retina. It helps maintain the shape of the eye and provides support for the retina.

## **8. Sclera**

The sclera is the white outer layer of the eye that provides protection and structural support. It is a tough, fibrous tissue that maintains the shape of the eyeball.

# **The Importance of Eye and Vision Anatomy Worksheets**

Eye and vision anatomy worksheets are valuable resources for enhancing the learning experience. They provide a structured way for students to engage with the material and reinforce their understanding of eye anatomy. Here are several reasons why these worksheets are beneficial:

## **1. Visual Learning**

Worksheets often incorporate diagrams and illustrations that help students visualize the complex structures of the eye. This visual representation enhances comprehension and retention of information.

## **2. Interactive Engagement**

Worksheets typically include activities such as labeling diagrams, matching terms to definitions, and answering questions. This interactive approach keeps students engaged and actively involved in their learning process.

## **3. Assessment and Reinforcement**

Teachers can use worksheets to assess students' understanding of eye anatomy. The answers can provide insight into areas that may need further clarification, allowing for targeted review sessions.

## **4. Customizable Learning Tools**

Educators can easily modify worksheets to suit different learning levels or specific curriculum requirements. This flexibility allows for personalized learning experiences that cater to individual student needs.

## **5. Preparation for Advanced Studies**

A solid grasp of eye anatomy is foundational for students pursuing careers in healthcare, optometry, or biology. Worksheets can provide the necessary groundwork for more advanced courses in these fields.

# How to Use the Eye and Vision Anatomy Worksheet Effectively

To maximize the benefits of the eye and vision anatomy worksheet, consider the following strategies:

## 1. Begin with a Review

Before diving into the worksheet, conduct a brief review of the key concepts related to eye anatomy. This could involve a lecture, a video presentation, or a group discussion.

## 2. Work in Groups

Encourage students to work in pairs or small groups on the worksheets. Collaboration can promote discussion and deeper understanding of the material.

## 3. Incorporate Technology

Utilize online resources or apps that provide interactive anatomy models alongside the worksheets. This integration can reinforce learning through additional visual aids.

## 4. Encourage Questions

Create an environment where students feel comfortable asking questions about the material. Addressing their inquiries can lead to a more thorough understanding of the subject matter.

## 5. Review the Answers Together

After completing the worksheet, facilitate a review session where students can share their answers and reasoning. This collaborative approach fosters a deeper comprehension of eye anatomy.

## Conclusion

In summary, the **eye and vision anatomy worksheet** is an invaluable educational tool that enhances the learning experience for students studying the intricate structures of the eye. By providing visual aids, interactivity, and opportunities for assessment, these worksheets play a crucial role in reinforcing knowledge and preparing students for future studies in health and

science. Utilizing effective strategies when working with these worksheets can significantly improve students' understanding and retention of eye anatomy, ultimately contributing to their success in related fields.

## **Frequently Asked Questions**

### **What is the primary purpose of an eye and vision anatomy worksheet?**

The primary purpose is to help students and individuals understand the structure and function of the eye and how it contributes to vision.

### **What key components of the eye are typically included in the anatomy worksheet?**

Key components usually include the cornea, lens, retina, iris, pupil, optic nerve, and vitreous humor.

### **How can an eye and vision anatomy worksheet aid in learning?**

It provides a visual representation and labeling activities that reinforce knowledge of the eye's anatomy and its functions.

### **What age group is most suitable for using an eye and vision anatomy worksheet?**

These worksheets are suitable for a range of age groups, from elementary school students to high school students studying biology or health sciences.

### **Are there any online resources for eye and vision anatomy worksheets?**

Yes, many educational websites and platforms offer downloadable worksheets and interactive resources focused on eye anatomy.

### **Can eye and vision anatomy worksheets be used in a classroom setting?**

Absolutely, they are effective tools for hands-on learning in classrooms, supporting visual and kinesthetic learning styles.

### **What skills can students develop by completing an eye and vision anatomy worksheet?**

Students can develop critical thinking, spatial reasoning, and a better

understanding of biological systems.

## **Are there any common misconceptions about the anatomy of the eye addressed in these worksheets?**

Yes, worksheets often clarify misconceptions, such as confusion between the functions of the lens and cornea.

## **Do eye and vision anatomy worksheets include activities beyond labeling?**

Yes, they often include quizzes, matching activities, and diagrams for coloring to enhance engagement and retention.

## **How can teachers assess understanding after using the eye and vision anatomy worksheet?**

Teachers can assess understanding through follow-up quizzes, group discussions, or practical demonstrations related to eye anatomy.

Find other PDF article:

<https://soc.up.edu.ph/47-print/pdf?ID=EXC22-6802&title=poems-about-blessings-in-life.pdf>

## **The Eye And Vision Anatomy Worksheet**

*Brampton - Prism Eye Institute*

We are conveniently located at the Prism Eye institute. If you are using a screen reader and are having problems using this website, please call (905) 456-3937. ©2025 Prism Eye Institute. All ...

Eyeology Optometry & Eyewear - Your Local Eye Doctor

Comprehensive eye care consultations, exams and treatments for children aged below 16 years. Choose lens and eyewear that suits your lifestyle. The right frame and lens will help you live ...

**Eyes: How They Work, Anatomy & Common Conditions**

Nov 15, 2023 · Most people are born with two eyes. Working together, they give you a field of view about 200 degrees wide and 135 degrees tall. When your eyes work together correctly, ...

Bramalea Optometric | Brampton Optometric Clinic Proudly ...

Bramalea Optometric Clinic has been serving the eye care needs of the Brampton community for over 40 years! We provide comprehensive and individualized eye care for you and your family ...

Home - 20/20 Optometry

We offer uncompromised and detailed eye examinations to detect, treat and manage many eye conditions. Visual field tests map a patient's entire central as well as peripheral scope of vision ...

### Leading Optometrist In Brampton | Thompson Family Optometry

Learn more about what your eye doctor will screen for, what to expect at your appointment, some of the advanced technology we use, and special considerations for pediatric and infant eye care.

### **Vivid Eyes | Eye Doctor Brampton | Eye Exams & Designer Glasses**

Visit Vivid Eyes in Ontario for eye exams, scleral lenses, ortho-k, designer glasses, and myopia management. Expert care from a trusted Brampton optometrist.

### Home | Mahil Optometry

We have been providing Optometric services in Brampton, Ontario for over 30 years. Our doctors and staff are committed to providing exceptional eye and vision care. Our goal is to form life ...

### **Divine Eye Care | Local Eye Doctor in Brampton, Ontario**

Experience exceptional Brampton eye care at Divine Eye Care. Our trusted optometrist provide eye exams, eyewear, and vision solutions. Book your visit today!

### **A Detailed Look at the Eye - Opto**

Jan 14, 2025 · Surrounding the cornea is the white parts of the eye called the sclera, which wraps around and provides the round structure of the eyeball. Behind the cornea is a fluid-filled ...

### **Brampton - Prism Eye Institute**

We are conveniently located at the Prism Eye institute. If you are using a screen reader and are having problems using this website, please call (905) 456-3937. ...

### **Eyeology Optometry & Eyewear - Your Local Eye Doctor**

Comprehensive eye care consultations, exams and treatments for children aged below 16 years. Choose lens and eyewear that suits your lifestyle. The right frame ...

### *Eyes: How They Work, Anatomy & Common Conditions*

Nov 15, 2023 · Most people are born with two eyes. Working together, they give you a field of view about 200 degrees wide and 135 degrees tall. When your eyes ...

### *Bramalea Optometric | Brampton Optometric Clinic Pr...*

Bramalea Optometric Clinic has been serving the eye care needs of the Brampton community for over 40 years! We provide comprehensive and ...

### **Home - 20/20 Optometry**

We offer uncompromised and detailed eye examinations to detect, treat and manage many eye conditions. Visual field tests map a patient's entire central as ...

Explore our comprehensive 'the eye and vision anatomy worksheet' to enhance your understanding of eye structure. Learn more and improve your knowledge today!

[Back to Home](#)