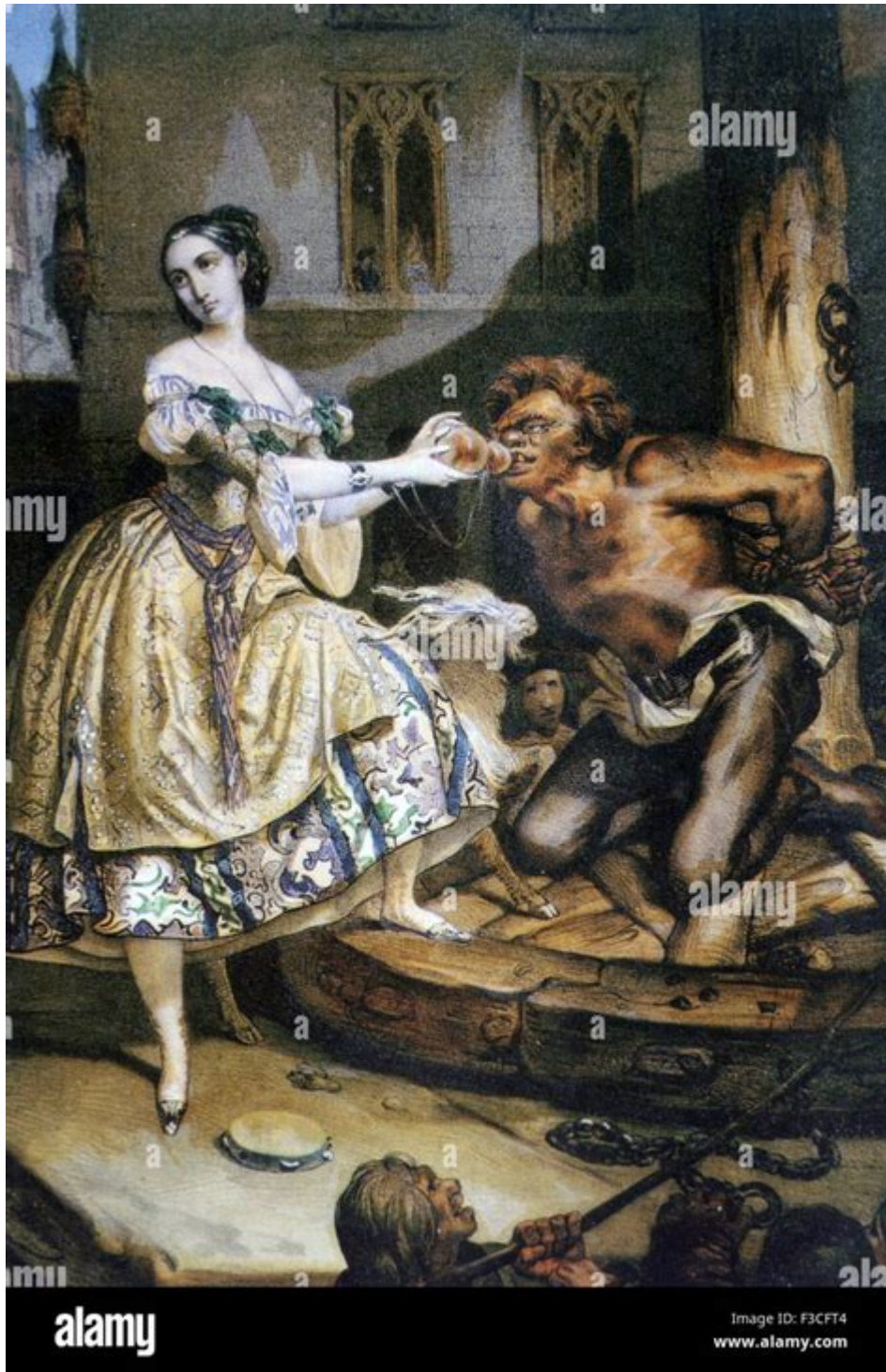


# The Hunchback Of Notre Dame Novel



The Hunchback of Notre Dame is a timeless novel by Victor Hugo, originally published in 1831. Set against the backdrop of medieval Paris, this poignant tale explores themes of love, acceptance, and the struggle between societal norms and personal identity. The story centers around the tragic figure of Quasimodo, the deformed bell-ringer of Notre Dame Cathedral, and his unrequited love for the beautiful Romani woman, Esmeralda. Through its rich characters and vivid descriptions, the novel offers profound insights into the human condition, making it a classic in world literature.

# Historical Context

Understanding the historical context in which *The Hunchback of Notre Dame* was written enriches our appreciation of the novel. The early 19th century in France was a time of political upheaval, cultural transformation, and a resurgence of interest in Gothic architecture.

## The Romantic Movement

- **Emphasis on Emotion:** The novel is a product of the Romantic movement, which favored intense emotion over reason. Hugo's characters are often driven by powerful feelings, making their struggles feel very real and relatable.
- **Nature and the Past:** The Romantic era celebrated nature and the past. Hugo captures the essence of medieval Paris, emphasizing the beauty of the architecture and the complexities of human emotion tied to historical settings.

## Architectural Significance

- **Gothic Architecture:** The Notre Dame Cathedral itself is a central character in the novel. Its intricate design and grandiosity reflect the themes of the story—beauty, decay, and the passage of time.
- **Preservation of Heritage:** Hugo wrote the novel partly to raise awareness about the plight of Gothic architecture in France. At the time, many historic buildings were neglected or destroyed. His work contributed to the eventual restoration of Notre Dame.

## Plot Overview

The narrative of *The Hunchback of Notre Dame* unfolds through a series of interconnected stories that highlight the lives of its main characters.

## Main Characters

1. **Quasimodo:** The titular character, a deformed bell-ringer, who experiences deep isolation and rejection from society.
2. **Esmeralda:** A compassionate and free-spirited Romani woman who becomes the object of Quasimodo's affection.
3. **Claude Frollo:** The archdeacon of Notre Dame, who is both a father figure to Quasimodo and a central antagonist driven by obsession and despair.
4. **Phoebus de Chateaupers:** A handsome soldier who captures Esmeralda's heart, representing the ideals of romantic love but also societal betrayal.

## Summary of Events

The story begins with the Festival of Fools, where Quasimodo is ridiculed for his appearance. Despite his deformity, he has a gentle heart and finds solace in ringing the bells of Notre Dame. Esmeralda, who shows him kindness, captures his heart, while Frollo becomes infatuated with her beauty.

As the plot unfolds, Quasimodo protects Esmeralda from Frollo's dangerous obsession. Phoebus, the soldier, also falls for Esmeralda, leading to a love triangle that complicates their lives. Tragedy escalates when Frollo's jealousy leads to dire consequences, culminating in a heartbreaking conclusion that highlights the novel's themes of love, sacrifice, and societal judgment.

## Themes and Motifs

The Hunchback of Notre Dame is rich in themes that resonate with readers on multiple levels.

### Beauty and Ugliness

- Physical Appearance vs. Inner Worth: Hugo contrasts Quasimodo's physical deformity with his noble heart, emphasizing that true beauty lies within. Esmeralda, despite her conventional beauty, faces prejudice and danger due to her Romani heritage.
- Societal Judgment: The novel critiques the superficial judgments of society, revealing how appearances can mislead and how true character is often hidden beneath the surface.

### Isolation and Belonging

- Quasimodo's Loneliness: Quasimodo represents the outcast, struggling with his identity in a society that shuns him. His connection to the cathedral serves as both a sanctuary and a prison.
- Desire for Acceptance: Many characters in the novel seek acceptance in a world that often rejects them. Esmeralda's search for love and Quasimodo's longing for companionship highlight this universal need.

### Love and Sacrifice

- Unrequited Love: Quasimodo's love for Esmeralda is pure and selfless, showcasing the pain of unreciprocated affection. His actions reflect the

theme of sacrificial love, as he puts her well-being above his own desires.

- Tragic Consequences: The novel illustrates how love can lead to both joy and suffering. The relationships among the characters are fraught with tension, ultimately leading to tragic outcomes.

## **Cultural Impact and Adaptations**

The Hunchback of Notre Dame has had a significant impact on literature, theater, and film, inspiring countless adaptations across various media.

## **Literary Influence**

- Gothic Literature: Hugo's novel is often considered a cornerstone of Gothic literature, influencing later works that explore similar themes of isolation and societal rejection.
- Exploration of Moral Complexity: The characters in the novel are morally ambiguous, prompting readers to reflect on their own values and judgments.

## **Film and Television Adaptations**

- Disney Animated Film (1996): One of the most popular adaptations, this version presents a more family-friendly narrative while retaining some of the original themes. The film introduced new audiences to the story and its characters.
- Live-Action Films: Numerous live-action adaptations, including the 1939 version starring Charles Laughton and the 1996 animated film, have explored different aspects of the story, each bringing unique interpretations to the characters and themes.
- Stage Productions: The novel has inspired various stage adaptations, including musicals that highlight its emotional depth and musicality.

## **Conclusion**

The Hunchback of Notre Dame remains a powerful exploration of the human experience, delving into themes of love, beauty, and the complexities of identity in a judgmental society. Victor Hugo's masterful storytelling, combined with the rich historical context and the vivid portrayal of medieval Paris, ensures that this novel continues to resonate with readers today. As we navigate our modern world, the lessons embedded in Quasimodo's plight and Esmeralda's struggles are as relevant now as they were in the 19th century, reminding us of the enduring power of compassion and understanding in the face of adversity.

# Frequently Asked Questions

## What are the main themes explored in 'The Hunchback of Notre-Dame'?

The main themes include love and obsession, social injustice, the conflict between individuality and societal norms, and the nature of beauty and deformity.

## How does Victor Hugo portray the character of Quasimodo?

Victor Hugo portrays Quasimodo as a tragic figure, emphasizing his inner goodness and humanity despite his physical deformities and the cruel treatment he receives from society.

## What role does the setting of Notre-Dame Cathedral play in the novel?

Notre-Dame Cathedral serves as a symbol of both sanctuary and societal conflict, representing the beauty of Gothic architecture while also being a site of struggle and tragedy for the characters.

## How does the relationship between Esmeralda and Quasimodo differ from that with Frollo?

Esmeralda's relationship with Quasimodo is based on mutual compassion and understanding, while her relationship with Frollo is marked by obsession and manipulation, highlighting the contrasting nature of love and desire.

## What social issues does Hugo address through 'The Hunchback of Notre-Dame'?

Hugo addresses issues such as class disparity, the treatment of marginalized individuals, and the hypocrisy of societal norms, aiming to evoke empathy for those who suffer due to their differences.

## How has 'The Hunchback of Notre-Dame' influenced modern adaptations in film and literature?

The novel's themes and characters have inspired numerous adaptations, focusing on the complexities of love, acceptance, and the human condition, often reinterpreted in various cultural contexts, including animated films and musicals.

Find other PDF article:

<https://soc.up.edu.ph/61-page/files?ID=NxH22-5132&title=the-practice-of-statistics-second-edition-a>

## **The Hunchback Of Notre Dame Novel**

### **South Dakota - Department of Social Services**

© 2020 South Dakota Department of Social Services All Rights Reserved. Official State of South Dakota Website

### **Forms & Publications : SD Dept. of Social Services - South Dakota**

The Department of Social Services has free forms and publications that can provide you with information and guidance in a number of important areas. This page can help you find the ...

### **SNAP - South Dakota**

The Supplemental Nutrition Assistance Program operates under the requirements of the U.S. Department of Agriculture and is administered by the South Dakota Department of Social ...

### **Economic Assistance - South Dakota**

We support the health and well-being of South Dakotans of all ages. Our team connects individuals and families with essential services, including medical care, food assistance, child ...

### **South Dakota Department of Human Services**

DHS offers services to enhance the quality of life of people with disabilities and those who are aging. Our staff work with individuals, families, and partners to help people learn about our ...

### **Find Your Local Office**

The Department of Social Services has full time and itinerant offices, as well as the Human Services Center, located in 42 communities throughout South Dakota. The local offices are ...

### *South Dakota - mySD - DCS Customer Connect*

Division of Child Support (DCS) Customer Connect has moved to South Dakota's single sign-on application, Citizen Portal, which allows users a single point of entry for e-government services.

### *South Dakota Department of Social Services | South Dakota Department ...*

The Secretary of the Department of Social Services is appointed by the Governor and is responsible for the overall administration and direction of the department.

### Food Assistance | South Dakota Department of Social Services

Data provided by 211 South Dakota Call View website Get directions MapLibre Physical Address

### **Department of Social Services - dcslicenses.sd.gov**

Links and Resources Child Care State Plan Child Protection Adoption Services CPS Local Offices Foster Parenting Independent Living Program

### Baldosa - Wikipedia, la enciclopedia libre

Una baldosa es una losa o loseta manufacturada, fabricada en diferentes tipos y técnicas de cerámica, así como en piedra, caucho, corcho, vidrio, metal, plástico, etc.



[Baldosa | Qué es, características, tipos, instalación, terminación ...](#)

Jan 27, 2019 · La baldosa es considerada un material de revestimiento desde épocas antiguas. Es un producto elaborado con arcillas naturales, componentes minerales y diversos aditivos.

[Azulejo, loseta o baldosa: aprende las diferencias | Arquitectural ...](#)

Dec 3, 2021 · En general, una baldosa es una pieza plana, generalmente de poco espesor, fabricada con arcillas, sílice, colorantes y otras materias primas, las cuales se muelen, prensan o compactan, para después someterse a un proceso de cocción y enfriamiento.

### **Baldosas [ Tipos ] Características, Beneficios y Usos**

Oct 27, 2021 · ¿Qué son las baldosas? Una baldosa también se conoce como azulejo y es básicamente un material de construcción manufacturado, muy usado en la arquitectura y la ingeniería civil sobre todo como un acabado de lujo en la industria construcción.

*¿Qué es una baldosa y para qué sirve? - todosloshechos.es*

¿Qué son las baldosa? Una baldosa es una losa o loseta manufacturada, fabricada en diferentes tipos y técnicas de cerámica, así como en piedra, caucho, corcho, vidrio, metal, plástico, etc.

*Tipos de baldosas para piso | Homecenter*

Gres Porcelánico El gres porcelánico es un tipo de baldosa cerámica que se caracteriza por su baja porosidad, alta resistencia y gran variedad de diseños. Los pisos en porcelanato se fabrican con una mezcla de arcillas, sílice y feldespato que se somete a un proceso de cocción a altas temperaturas, lo que le da sus propiedades únicas.

*Baldosas cerámicas: conceptos básicos, tipos y características*

Apr 14, 2023 · Algunos de los tipos de baldosas cerámicas más conocidas son los azulejos, las baldosas de gres, o el gres porcelánico. La principal diferencia entre estos tipos es su ...

*Definición de Baldosa: Que es, 5 Ejemplos, Tipos y Para que ...*

Una baldosa es una pieza plana y generalmente rectangular hecha de diversos materiales, como cerámica, porcelana, piedra, vidrio o metal. Las baldosas se utilizan para revestir superficies, como pisos, paredes y techos, y pueden tener diversos patrones, colores y texturas.

### **Tipos de baldosas para elegir la mejor opción - Padua Materiales**

Jan 11, 2011 · La mejor baldosa para tu proyecto. Información completa sobre tipos de baldosas: cerámica, porcelana, piedra, cemento, madera y metal. Comparativa de precios, resistencia y mantenimiento.

*¿Cuáles son los tipos de baldosas? - scatec*

En resumen, para determinar si una baldosa es de primera, es necesario revisar su acabado, peso, resistencia y precio. Estos factores nos ayudarán a tomar una decisión acertada y garantizar la calidad de nuestras baldosas.

Explore the timeless themes and characters of "The Hunchback of Notre Dame" novel. Dive into Victor Hugo's masterpiece and discover how it shaped literature. Learn more!

[Back to Home](#)