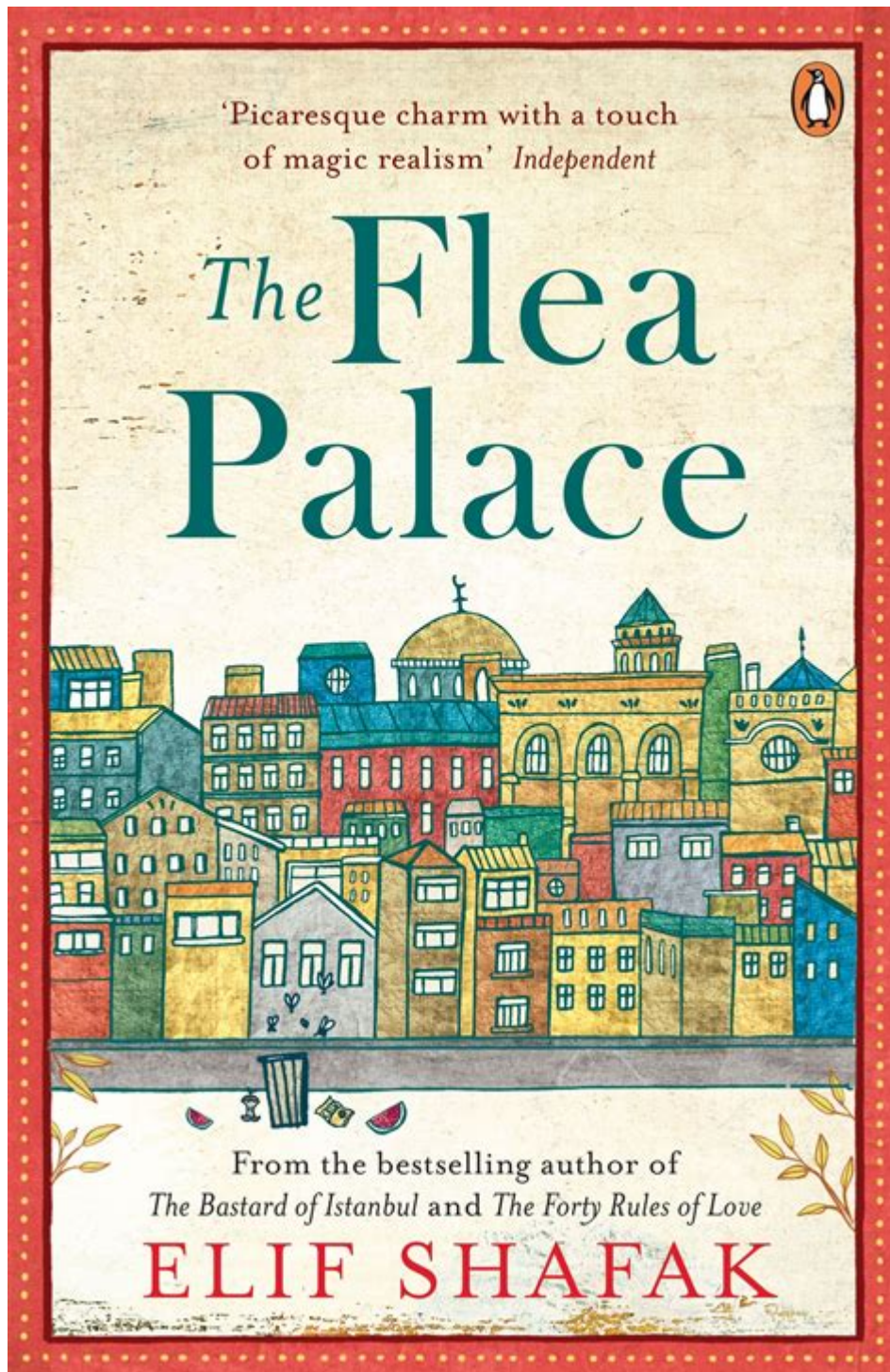


The Flea Palace Elif Shafak Kingkongore



The Flea Palace is a captivating novel by the renowned Turkish-British author Elif Shafak, renowned for her intricate storytelling and profound exploration of cultural themes. This work, published in 2002, reflects Shafak's unique narrative style, blending elements of magical realism with social commentary. In this article, we will delve into the key themes, characters, and the cultural significance of "The Flea Palace," while also exploring its relation to other works by Shafak, including her acclaimed novel "The Bastard of Istanbul."

Overview of The Flea Palace

"The Flea Palace" is set in a dilapidated apartment building in Istanbul, which serves as a microcosm for the complexity of modern Turkish society. The building itself, known as the Flea Palace, is inhabited by a diverse group of characters, each representing different facets of life in Turkey. Their stories interweave, revealing the struggles, dreams, and aspirations of a society caught between tradition and modernity.

Plot Summary

The narrative is structured around the lives of the eclectic residents of the Flea Palace. Through the lens of these characters, Shafak examines issues such as identity, migration, and the clash of cultures. The residents include:

1. A retired poet - who reflects on the passage of time and lost love.
2. A young woman - striving to break free from societal expectations and familial constraints.
3. An immigrant family - facing the challenges of adaptation in a new country.
4. An eccentric old man - who holds the key to the building's history.

As the story unfolds, the reader is introduced to various interconnected narratives, each rich in detail and emotional depth. The characters' lives symbolize the broader societal changes occurring in Istanbul, making the Flea Palace not just a setting but a character in its own right.

Thematic Exploration

Elif Shafak's "The Flea Palace" is rich with themes that resonate deeply with readers. Below, we explore some of the dominant themes present in the novel:

Identity and Belonging

One of the central themes of "The Flea Palace" is the exploration of identity and the quest for belonging. Each character grapples with their sense of self in relation to their cultural and social environments. Shafak poignantly illustrates how the characters' identities are shaped by their past experiences, familial ties, and the socio-political landscape of Turkey.

Tradition vs. Modernity

The tension between tradition and modernity is another significant theme. The residents of the Flea Palace each represent different responses to this tension. Some cling to traditional values, while others embrace change and seek new opportunities. Shafak captures this struggle beautifully, highlighting the complexities of living in a rapidly evolving society.

Memory and History

Memory plays a crucial role in the narrative, with characters often reflecting on their pasts. The Flea Palace itself holds memories of the city's history, serving as a repository of collective experiences. Shafak emphasizes the importance of remembering one's roots while navigating the challenges of contemporary life.

Character Analysis

The strength of "The Flea Palace" lies in its richly developed characters. Each character brings a unique perspective, contributing to the novel's exploration of its central themes. Here are some notable characters:

The Poet

The retired poet is a figure of nostalgia and reflection. His musings on love, loss, and the passage of time provide a philosophical backdrop to the narrative. Through his character, Shafak invites readers to contemplate the nature of art and its role in preserving memory.

The Young Woman

The young woman symbolizes the struggle for autonomy and self-determination. Her journey represents the fight against societal pressures and the desire for personal freedom. Shafak portrays her resilience and determination, making her a relatable and inspiring figure.

The Immigrant Family

The immigrant family's story sheds light on the challenges faced by those who seek a better life in a new country. Their experiences of displacement and adaptation highlight the broader issues of migration and cultural integration, making their narrative particularly poignant in today's globalized world.

Writing Style and Narrative Technique

Elif Shafak's writing style is characterized by lyrical prose and a keen sense of observation. She employs a multi-voiced narrative, allowing readers to hear the distinct voices of her characters. This technique enhances the novel's richness, as each character's perspective adds layers to the overall story.

The use of magical realism is another hallmark of Shafak's style. She seamlessly blends the mundane with the fantastical, creating a dreamlike quality that invites readers to explore the deeper meanings behind everyday

experiences. This approach not only captivates the reader but also serves to emphasize the novel's themes.

Cultural Significance

"The Flea Palace" is a reflection of Elif Shafak's deep engagement with her cultural heritage. As a Turkish-British author, she navigates the complexities of identity and belonging in a multicultural world. The novel sheds light on the nuances of Turkish society, addressing issues such as gender roles, class divisions, and the impact of globalization.

Shafak's exploration of Istanbul as a character in its own right highlights the city's rich history and cultural diversity. The Flea Palace, with its eclectic residents, serves as a metaphor for the city itself—vibrant, chaotic, and full of stories waiting to be told.

Connection to Other Works

Elif Shafak's body of work often revisits themes of identity, culture, and memory, making "The Flea Palace" a significant piece within her oeuvre. Readers familiar with her later works, such as "The Bastard of Istanbul," will find similar explorations of Turkish identity and the immigrant experience.

Both novels feature strong female protagonists who challenge societal norms and seek to carve out their own identities. Shafak's ability to weave personal narratives with broader societal issues creates a powerful commentary on the human experience.

Conclusion

In conclusion, "The Flea Palace" by Elif Shafak is a profound exploration of identity, memory, and the complexities of modern life in Turkey. Through its richly developed characters and intricate narrative structure, the novel invites readers to reflect on their own lives and the world around them. Shafak's unique voice and storytelling prowess ensure that "The Flea Palace" remains a significant work in contemporary literature, resonating with readers across cultures and generations. As Shafak continues to write and publish, her ability to illuminate the human condition through her narratives will undoubtedly leave a lasting impact on literature and society.

Frequently Asked Questions

What is the central theme of 'The Flea Palace' by Elif Shafak?

The central theme revolves around the interconnectedness of human lives and the impact of memory and history on personal and collective identity.

How does Elif Shafak use the setting of a building in 'The Flea Palace'?

The setting of the building serves as a microcosm of society, reflecting the diverse backgrounds of its inhabitants and the complexities of urban life.

What narrative techniques does Shafak employ in 'The Flea Palace'?

Shafak employs a multi-perspective narrative, allowing readers to experience the thoughts and lives of various characters, enhancing the depth of the story.

In what way does 'The Flea Palace' address themes of migration and displacement?

The novel explores the experiences of characters who have migrated, highlighting their struggles with identity, belonging, and the sense of home in a changing world.

What role does cultural diversity play in 'The Flea Palace'?

Cultural diversity is a pivotal element that shapes the interactions and conflicts among characters, showcasing both the richness and challenges of a multicultural society.

How has 'The Flea Palace' been received by critics and readers?

The novel has been praised for its lyrical prose and intricate character development, resonating with readers and critics alike for its poignant exploration of human experience.

Find other PDF article:

<https://soc.up.edu.ph/53-scan/Book?trackid=uIP66-0762&title=sexual-abuse-trauma-therapy.pdf>

[The Flea Palace Elif Shafak Kingkongore](#)

Flea - Wikipedia

Flea, the common name for the order Siphonaptera, includes 2,500 species ...

[Fleas - Canada.ca](#)

What flea control products do I use? Flea control products for use on pets ...

Fleas | Facts & Identification, Contr...

In addition to targeting fleas directly, look for and remove the nests of wild animals ...

Flea | Definition, Size, & Natural History

Jun 28, 2025 · Fleas are small, wingless insects with a tough cuticle bearing ...

Flea Bites: What They Look Like, Sy...

Aug 31, 2021 · Fleas are tiny, wingless insects. They are dark brown or black ...

Flea - Wikipedia

Flea, the common name for the order Siphonaptera, includes 2,500 species of small flightless insects that live as external parasites of mammals and birds. Fleas live by ingesting the blood ...

Fleas - Canada.ca

What flea control products do I use? Flea control products for use on pets and in the home are available.

Fleas | Facts & Identification, Control & Prevention

In addition to targeting fleas directly, look for and remove the nests of wild animals on the property. The removal of unwelcome nests helps eliminate fleas and allows pets to roam ...

Flea | Definition, Size, & Natural History | Britannica

Jun 28, 2025 · Fleas are small, wingless insects with a tough cuticle bearing many bristles and frequently combs (ctenidia) of broad, flattened spines. The adult flea varies from about 0.1 to ...

Flea Bites: What They Look Like, Symptoms & Treatment

Aug 31, 2021 · Fleas are tiny, wingless insects. They are dark brown or black and have flat bodies. They have six legs, strong claws on the bottoms of their legs that allow them to hold ...

About Fleas | Fleas | CDC

May 15, 2024 · Fleas are small insects that survive by feeding on animal or human blood. Their bites can cause discomfort, itchiness, and irritation. Sometimes, fleas can infect people or pets ...

Fleas: Prevention and Treatment - WebMD

Sep 8, 2024 · Fleas are tiny wingless parasites that survive by sucking on animal or human blood. They find new hosts to live on by searching for body heat, movements, and breathing. (Fleas ...

How to Get Rid of Fleas - WebMD

Nov 19, 2024 · A combination of baths, flea combs, and medications can be used to get rid of fleas on your pet. Also, regular, thorough cleaning of your home is crucial until fleas are no ...

Fleas: Know your Enemy - Veterinary Partner - VIN

Apr 12, 2017 · This is the flea that we find on our pets (cats, dogs, rabbits, and other species) in 99.9 percent of cases. In order to understand how to control the damage caused by this tiny ...

Flea - IMDb

John Lydon of PIL asked Flea to join his band when he left Fear in 1984, but Flea instead decided to rejoin his friends. With Kiedis, Slovak and Irons, they started another band together, the ...

Discover the enchanting world of 'The Flea Palace' by Elif Shafak and its captivating themes. Explore insights and interpretations. Learn more now!

[Back to Home](#)