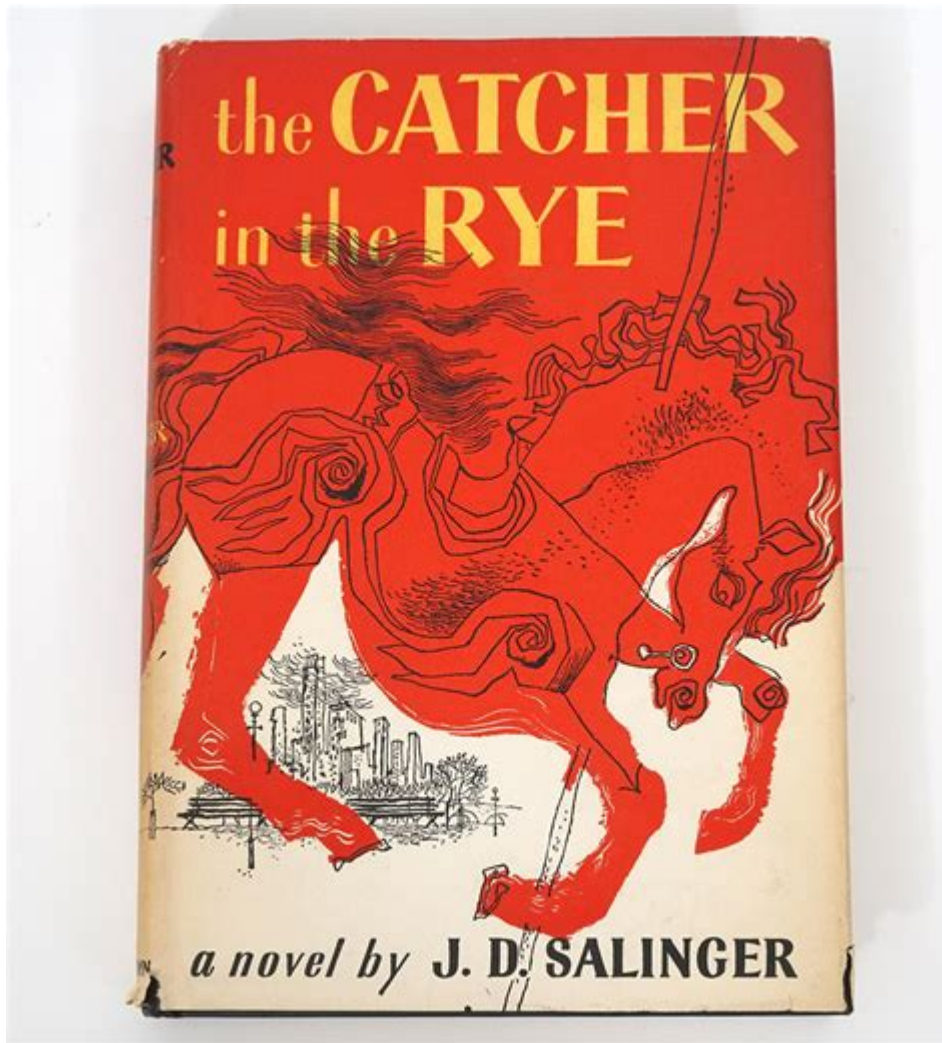


# The Catcher In The Rye By Jd Salinger



**THE CATCHER IN THE RYE** IS ONE OF THE MOST INFLUENTIAL NOVELS IN AMERICAN LITERATURE, PENNED BY THE ENIGMATIC AUTHOR J.D. SALINGER. FIRST PUBLISHED IN 1951, THIS COMING-OF-AGE STORY EXPLORES THEMES OF ALIENATION, IDENTITY, AND THE CHALLENGES OF ADOLESCENCE THROUGH THE EYES OF ITS PROTAGONIST, HOLDEN CAULFIELD. AS A SYMBOL OF TEENAGE REBELLION AND DISILLUSIONMENT, SALINGER'S WORK HAS CAPTIVATED READERS FOR DECADES, MAKING IT A STAPLE IN HIGH SCHOOL AND COLLEGE CURRICULA. IN THIS ARTICLE, WE WILL DELVE INTO THE NOVEL'S THEMES, CHARACTERS, AND ITS LASTING IMPACT ON LITERATURE AND CULTURE.

## OVERVIEW OF THE NOVEL

SET IN THE 1950s, **THE CATCHER IN THE RYE** FOLLOWS HOLDEN CAULFIELD, A TROUBLED TEENAGER WHO HAS BEEN EXPELLED FROM MULTIPLE PREP SCHOOLS. THE STORY UNFOLDS IN A SERIES OF EVENTS THAT TAKE PLACE OVER A FEW DAYS IN NEW YORK CITY, WHERE HOLDEN GRAPPLES WITH HIS FEELINGS OF ALIENATION AND HIS QUEST FOR AUTHENTICITY IN A WORLD HE PERCEIVES AS "PHONY." THE NARRATIVE IS MARKED BY HOLDEN'S DISTINCTIVE VOICE, CHARACTERIZED BY COLLOQUIAL LANGUAGE AND A STREAM-OF-CONSCIOUSNESS STYLE.

## PLOT SUMMARY

THE NOVEL BEGINS WITH HOLDEN NARRATING HIS EXPERIENCES FROM A MENTAL INSTITUTION, REFLECTING ON THE EVENTS THAT LED HIM THERE. AFTER BEING EXPELLED FROM PENCEY PREP, HOLDEN DECIDES TO LEAVE SCHOOL EARLY AND SPEND A FEW DAYS IN NEW YORK BEFORE RETURNING HOME. THROUGHOUT HIS JOURNEY, HE ENCOUNTERS VARIOUS PEOPLE, INCLUDING FORMER TEACHERS, FRIENDS, AND STRANGERS, ALL WHILE CONFRONTING HIS DEEP-SEATED FEARS AND ANXIETIES.

KEY PLOT POINTS INCLUDE:

1. EXPULSION FROM PENCEY PREP: HOLDEN'S DISDAIN FOR THE SCHOOL'S CULTURE AND HIS INABILITY TO CONNECT WITH HIS PEERS CONTRIBUTE TO HIS DECISION TO LEAVE.
2. ENCOUNTERS IN NEW YORK: THROUGHOUT HIS TIME IN THE CITY, HOLDEN MEETS INDIVIDUALS WHO HIGHLIGHT HIS LONELINESS AND EMOTIONAL TURMOIL.
3. THE SEARCH FOR CONNECTION: HOLDEN'S INTERACTIONS OFTEN REVEAL HIS DESIRE FOR GENUINE RELATIONSHIPS, JUXTAPOSED WITH HIS INSTINCT TO PUSH PEOPLE AWAY.
4. THE "CATCHER" FANTASY: CENTRAL TO HOLDEN'S CHARACTER IS HIS DREAM OF BECOMING THE "CATCHER IN THE RYE," A PROTECTOR OF CHILDREN WHO SAVES THEM FROM FALLING INTO THE CORRUPTION OF ADULTHOOD.

## CHARACTER ANALYSIS

HOLDEN CAULFIELD IS THE MOST COMPLEX CHARACTER IN THE NOVEL, EMBODYING THE STRUGGLES OF ADOLESCENCE. UNDERSTANDING HOLDEN REQUIRES AN EXAMINATION OF THE OTHER CHARACTERS THAT POPULATE HIS WORLD.

### HOLDEN CAULFIELD

HOLDEN IS CHARACTERIZED BY HIS CYNICISM, CRITICAL NATURE, AND PROFOUND LONELINESS. HE OFTEN EXPRESSES DISDAIN FOR THE ADULT WORLD, WHICH HE VIEWS AS SUPERFICIAL AND HYPOCRITICAL. HIS EXPERIENCES HIGHLIGHT HIS DEEP-SEATED INSECURITIES, AS HE GRAPPLES WITH THE DEATH OF HIS YOUNGER BROTHER, ALLIE, AND THE LOSS OF INNOCENCE.

### SUPPORTING CHARACTERS

- PHOEBE CAULFIELD: HOLDEN'S YOUNGER SISTER, WHO REPRESENTS INNOCENCE AND AUTHENTICITY. SHE SERVES AS A GROUNDING FORCE IN HIS LIFE AND CHALLENGES HIS WORLDVIEW.
- MR. ANTOLINI: HOLDEN'S FORMER ENGLISH TEACHER, WHO OFFERS HIM GUIDANCE AND IS A VOICE OF REASON, EMPHASIZING THE IMPORTANCE OF EDUCATION AND GROWTH.
- SALLY HAYES: A GIRL HOLDEN DATES, REPRESENTING THE COMPLEXITIES OF ROMANTIC RELATIONSHIPS AND HOLDEN'S FEAR OF INTIMACY.
- ALLIE CAULFIELD: HOLDEN'S DECEASED BROTHER, WHOSE MEMORY PROFOUNDLY IMPACTS HOLDEN'S PSYCHE AND SYMBOLIZES LOST INNOCENCE.

## MAJOR THEMES

SALINGER'S NOVEL IS RICH WITH THEMES THAT RESONATE WITH READERS, MAKING IT A TIMELESS EXPLORATION OF HUMAN EXPERIENCE.

### ALIENATION AND ISOLATION

ONE OF THE MOST PROMINENT THEMES IS HOLDEN'S SENSE OF ALIENATION. THROUGHOUT THE NOVEL, HE STRUGGLES TO CONNECT WITH OTHERS, OFTEN PUSHING THEM AWAY. HIS ISOLATION IS A DEFENSE MECHANISM AGAINST THE PAIN OF LOSS AND THE COMPLEXITIES OF GROWING UP. SALINGER CAPTURES THIS FEELING OF DISCONNECTION, ALLOWING READERS TO EMPATHIZE

WITH HOLDEN'S PLIGHT.

## LOSS OF INNOCENCE

THE THEME OF INNOCENCE IS CENTRAL TO HOLDEN'S CHARACTER. HE IS DEEPLY TROUBLED BY THE IDEA OF CHILDREN LOSING THEIR PURITY AND BEING EXPOSED TO THE HARSH REALITIES OF ADULTHOOD. THIS CONCERN DRIVES HIS FANTASY OF BEING THE "CATCHER IN THE RYE," WHERE HE IMAGINES HIMSELF PROTECTING CHILDREN FROM FALLING INTO THE CORRUPTION OF THE ADULT WORLD.

## THE SEARCH FOR IDENTITY

HOLDEN'S JOURNEY IS ALSO A QUEST FOR SELF-IDENTITY. HE GRAPPLES WITH HIS PLACE IN THE WORLD, QUESTIONING HIS VALUES AND BELIEFS. THIS SEARCH IS COMPLICATED BY SOCIETAL EXPECTATIONS AND THE PRESSURE TO CONFORM, WHICH HE RESISTS. HIS INTERNAL CONFLICT REFLECTS THE BROADER STRUGGLES OF ADOLESCENCE, MAKING HIM A RELATABLE FIGURE FOR MANY READERS.

## LITERARY STYLE AND TECHNIQUES

SALINGER EMPLOYS VARIOUS LITERARY TECHNIQUES THAT ENHANCE THE NOVEL'S THEMES AND CHARACTER DEVELOPMENT.

## FIRST-PERSON NARRATIVE

THE FIRST-PERSON NARRATIVE ALLOWS READERS TO EXPERIENCE HOLDEN'S THOUGHTS AND FEELINGS INTIMATELY. HIS CONVERSATIONAL TONE CREATES A SENSE OF IMMEDIACY AND AUTHENTICITY, DRAWING READERS INTO HIS WORLD.

## SYMBOLISM

- THE RED HUNTING HAT: HOLDEN'S ICONIC RED HAT SYMBOLIZES HIS DESIRE FOR PROTECTION AND INDIVIDUALITY. IT SERVES AS A SHIELD AGAINST THE WORLD AND A MARKER OF HIS UNIQUENESS.
- THE CAROUSEL: THE CAROUSEL, PARTICULARLY THE SCENE WITH PHOEBE, REPRESENTS THE CYCLICAL NATURE OF LIFE AND THE INEVITABILITY OF GROWING UP. IT ILLUSTRATES HOLDEN'S STRUGGLE TO LET GO OF CHILDHOOD WHILE RECOGNIZING THE IMPORTANCE OF MOVING FORWARD.

## THE IMPACT OF THE CATCHER IN THE RYE

SINCE ITS PUBLICATION, THE CATCHER IN THE RYE HAS HAD A PROFOUND IMPACT ON LITERATURE AND CULTURE. IT HAS SPARKED DISCUSSIONS AROUND THEMES OF MENTAL HEALTH, IDENTITY, AND THE CHALLENGES OF ADOLESCENCE.

## CULTURAL SIGNIFICANCE

THE NOVEL HAS BECOME A CULTURAL TOUCHSTONE, OFTEN REFERENCED IN DISCUSSIONS ABOUT TEENAGE ANGST AND REBELLION. ITS INFLUENCE EXTENDS BEYOND LITERATURE, APPEARING IN VARIOUS FORMS OF MEDIA, INCLUDING FILMS, MUSIC, AND ART.

## CONTROVERSY AND CENSORSHIP

DESPITE ITS ACCLAIM, *THE CATCHER IN THE RYE* HAS FACED CENSORSHIP AND CONTROVERSY. CRITICS HAVE CHALLENGED ITS THEMES OF ALIENATION, PROFANITY, AND DEPICTIONS OF SEXUALITY. HOWEVER, THESE VERY ELEMENTS HAVE CONTRIBUTED TO ITS STATUS AS A CLASSIC, ENCOURAGING READERS TO CONFRONT UNCOMFORTABLE TRUTHS ABOUT SOCIETY.

## CONCLUSION

IN CONCLUSION, *THE CATCHER IN THE RYE* REMAINS A SEMINAL WORK THAT CAPTURES THE COMPLEXITIES OF ADOLESCENCE AND THE STRUGGLE FOR IDENTITY. THROUGH HOLDEN CAULFIELD'S JOURNEY, J.D. SALINGER EXPLORES THEMES OF ALIENATION, LOSS OF INNOCENCE, AND THE QUEST FOR AUTHENTICITY. THE NOVEL'S ENDURING RELEVANCE SPEAKS TO THE UNIVERSAL EXPERIENCES OF GROWING UP, MAKING IT A VITAL PART OF THE LITERARY CANON. WHETHER READ FOR ITS NARRATIVE DEPTH, CHARACTER COMPLEXITY, OR THEMATIC RICHNESS, *THE CATCHER IN THE RYE* CONTINUES TO RESONATE WITH READERS, INVITING THEM TO REFLECT ON THEIR OWN EXPERIENCES OF YOUTH, DISILLUSIONMENT, AND THE SEARCH FOR MEANING IN AN OFTEN CONFUSING WORLD.

## FREQUENTLY ASKED QUESTIONS

### WHAT ARE THE MAIN THEMES EXPLORED IN 'THE CATCHER IN THE RYE'?

THE MAIN THEMES INCLUDE ALIENATION, THE LOSS OF INNOCENCE, THE CHALLENGES OF ADOLESCENCE, AND THE CRITIQUE OF SOCIETAL NORMS.

### HOW DOES HOLDEN CAULFIELD'S PERSPECTIVE INFLUENCE THE NARRATIVE OF THE NOVEL?

HOLDEN'S PERSPECTIVE IS SUBJECTIVE AND OFTEN UNRELIABLE, WHICH ALLOWS READERS TO EXPERIENCE HIS EMOTIONAL TURMOIL AND ISOLATION FIRSTHAND, CREATING A DEEP CONNECTION WITH HIS CHARACTER.

### WHAT ROLE DOES THE SYMBOLISM OF THE 'CATCHER IN THE RYE' PLAY IN THE STORY?

THE 'CATCHER IN THE RYE' SYMBOLIZES HOLDEN'S DESIRE TO PROTECT CHILDREN FROM THE HARSH REALITIES OF ADULTHOOD AND PRESERVE THEIR INNOCENCE.

### WHY IS 'THE CATCHER IN THE RYE' CONSIDERED A CONTROVERSIAL BOOK?

'THE CATCHER IN THE RYE' HAS BEEN DEEMED CONTROVERSIAL DUE TO ITS CANDID EXPLORATION OF TEENAGE ANGST, MENTAL HEALTH ISSUES, AND ITS USE OF PROFANITY, WHICH HAS LED TO CENSORSHIP IN SOME SCHOOLS.

### HOW DOES J.D. SALINGER'S WRITING STYLE CONTRIBUTE TO THE BOOK'S IMPACT?

SALINGER'S DISTINCTIVE WRITING STYLE, CHARACTERIZED BY COLLOQUIAL LANGUAGE AND STREAM-OF-CONSCIOUSNESS NARRATION, IMMERSES READERS IN HOLDEN'S THOUGHTS AND FEELINGS, ENHANCING THE EMOTIONAL DEPTH OF THE STORY.

### WHAT IS THE SIGNIFICANCE OF THE CHARACTER PHOEBE IN THE NOVEL?

PHOEBE REPRESENTS INNOCENCE AND PURITY, SERVING AS A FOIL TO HOLDEN'S CYNICISM. HER PRESENCE HIGHLIGHTS HOLDEN'S DEEP-SEATED NEED FOR CONNECTION AND HIS STRUGGLE WITH GROWING UP.

### IN WHAT WAYS DOES 'THE CATCHER IN THE RYE' REFLECT THE SOCIETAL ISSUES OF ITS

## TIME?

THE NOVEL REFLECTS POST-WORLD WAR II SOCIETAL ISSUES SUCH AS DISILLUSIONMENT, THE PRESSURE TO CONFORM, AND THE SEARCH FOR IDENTITY, RESONATING WITH THE STRUGGLES OF A GENERATION FACING RAPID CHANGE.

## HOW HAS 'THE CATCHER IN THE RYE' INFLUENCED MODERN LITERATURE AND CULTURE?

THE NOVEL HAS INFLUENCED COUNTLESS AUTHORS AND WORKS, SHAPING THE PORTRAYAL OF ADOLESCENT ANGST AND REBELLION IN LITERATURE AND BECOMING A CULTURAL TOUCHSTONE FOR DISCUSSIONS ABOUT MENTAL HEALTH AND IDENTITY.

Find other PDF article:

<https://soc.up.edu.ph/02-word/files?trackid=wDp62-9931&title=50-cent-and-ciara-relationship.pdf>

## The Catcher In The Rye By Jd Salinger

Colegio Claparede CCT 09PES0579U - ESCUELASMEX

Escuela Colegio Claparede Domicilio: Cerrada De Claudio Arciniega No. 22 Mixcoac Benito Juárez, Benito Juárez, Ciudad De México CP. 3910 - Ver Mapa Director: Rodolfo Chávez Y ...

### **COLEGIO CLAPAREDE de BENITO JUÁREZ | Información y ...**

Conoce los detalles esenciales sobre COLEGIO CLAPAREDE, ubicado en BENITO JUÁREZ, CIUDAD DE MÉXICO. Información clave para comprender el contexto y la oferta educativa de ...

*COLEGIO CLAPAREDE (Centro Educativo en Ciudad De México)*

¿Estás en busca de una escuela Primaria en Ciudad De México? Te presentamos COLEGIO CLAPAREDE que se encuentra ubicado en la entidad federativa Ciudad De México, en el ...

### **Escuela Colegio claparede en BENITO JUÁREZ CIUDAD DE MÉXICO**

Su dirección: CERRADA DE CLAUDIO ARCINIEGA NO. 22 , COL. MIXCOAC. La escuela Colegio claparede es una escuela del sector Privado, de nivel educativo Secundaria y de ...

### **COLEGIO CLAPAREDE - 09PPR0464Z - Escuelas México**

La escuela COLEGIO CLAPAREDE es una institución educativa con sostenimiento Privado, ubicada en Calle Miguel Angel 73, Mixcoac, Benito Juárez, Benito Juárez, Ciudad De México, ...

Escuela - Colegio Claparede De Benito Juárez, Ciudad De México

El directorio está conformado de más de 400,000 escuelas de los distintos niveles, si buscas alguna escuela en específico puedes usar el siguiente buscador o ingresar al buscador ...

*COLEGIO CLAPAREDE EN BENITO JUAREZ, MIXCOAC*

COLEGIO COLEGIO CLAPAREDE. PROPUESTA EDUCATIVA Y CARACTERISTICAS. COMENTARIOS, COMPARTIR EXPERIENCIAS Y OPINIONES DEL ESTABLECIMIENTO ...

### **Colegio Claparede en Benito Juarez**

Colegio Claparede, escuela Secundaria en Benito Juarez, Distrito Federal, México

### **COLEGIO CLAPAREDE - Escuelas VIP**

Al elegir un colegio, deberías pensar en los programas educativos disponibles, además de los deportes y actividades culturales que ofrecen. La reputación de la escuela en la comunidad y ...

### **QUIENES SOMOS - claparede**

El Colegio Claparede inicia así sus actividades con el nivel Primaria en el turno matutino mixto. En el año de 1983 el Colegio se traslada a su ubicación actual en la calle de Miguel Ángel No. ...

### **Cómo cambiar el tiempo de bloqueo de pantalla en Windows 11**

Dentro de la ventana de ajustes de Windows 11, tendrás que clicar en "Sistema", y posteriormente entrar en "Energía y batería". En el apartado de "Pantalla y suspensión" ...

### Cómo hacer que su pantalla permanezca más tiempo en Windows 11

Mar 21, 2023 · En la configuración de la pantalla de Windows 11, tiene la opción de cambiar la duración del tiempo de espera de un minuto a cinco horas, o deshabilitar la función por completo.

### **Como Cambiar el Tiempo de Bloqueo de Pantalla - Windows Report**

Apr 24, 2024 · Utiliza la aplicación Configuración para cambiar el tiempo de bloqueo de pantalla. Haz clic derecho en el icono de Windows, luego haz clic en Configuración en el menú Enlaces ...

### Cómo configurar el tiempo para el bloqueo automático en Windows ...

Oct 25, 2024 · Configurar el tiempo para el bloqueo automático de la pantalla en Windows 10 y Windows 11 puede ser útil para mantener la privacidad y la seguridad de los datos en tu ...

### **Cambiar el tiempo de espera de la pantalla en Windows 11: así ...**

Jun 23, 2025 · Puede ajustar el tiempo de espera de la pantalla en Windows 11 usted mismo. De este modo, aumentará su productividad y ahorrará energía al mismo tiempo. Nuestra guía le ...

### Cómo hacer que la Pantalla Dure más Tiempo Encendida Windows 11

Oct 21, 2021 · Tutorial con vídeo para hacer que la Pantalla Dure más Tiempo Encendida Windows 11.

### *Cómo desactivar el tiempo de espera de la pantalla en Windows 11*

Feb 7, 2024 · Desplázate hacia abajo en la lista de configuraciones y busca «Tiempo de espera de la pantalla» en la sección de configuración de pantalla. Haz clic en la opción de «Plugged ...

### **Cómo cambiar el tiempo de apagado de la pantalla en Windows ...**

Jun 12, 2025 · Busca las opciones que dicen Pantalla y Suspensión. En Pantalla, ajusta cuánto tiempo quieres que la pantalla permanezca encendida cuando no estás usando el equipo. Las ...

### **Cómo cambiar la duración del tiempo de espera de la pantalla en Windows ...**

Nov 6, 2023 · Si lo desea, puede cambiar la duración del tiempo de espera de la pantalla para que se apague más tarde, más tarde o nunca. En este tutorial, le mostraremos dos formas de ...

### **Cómo cambiar el período de tiempo de espera de la pantalla de ...**

Puede habilitar el tiempo de espera de apagado de la pantalla de bloqueo de la consola en las Opciones de energía de Windows y cambiar el período de tiempo de espera de la pantalla de ...

Explore the themes and characters of "The Catcher in the Rye" by J.D. Salinger. Discover how this classic novel captures teenage angst and rebellion. Learn more!

[Back to Home](#)