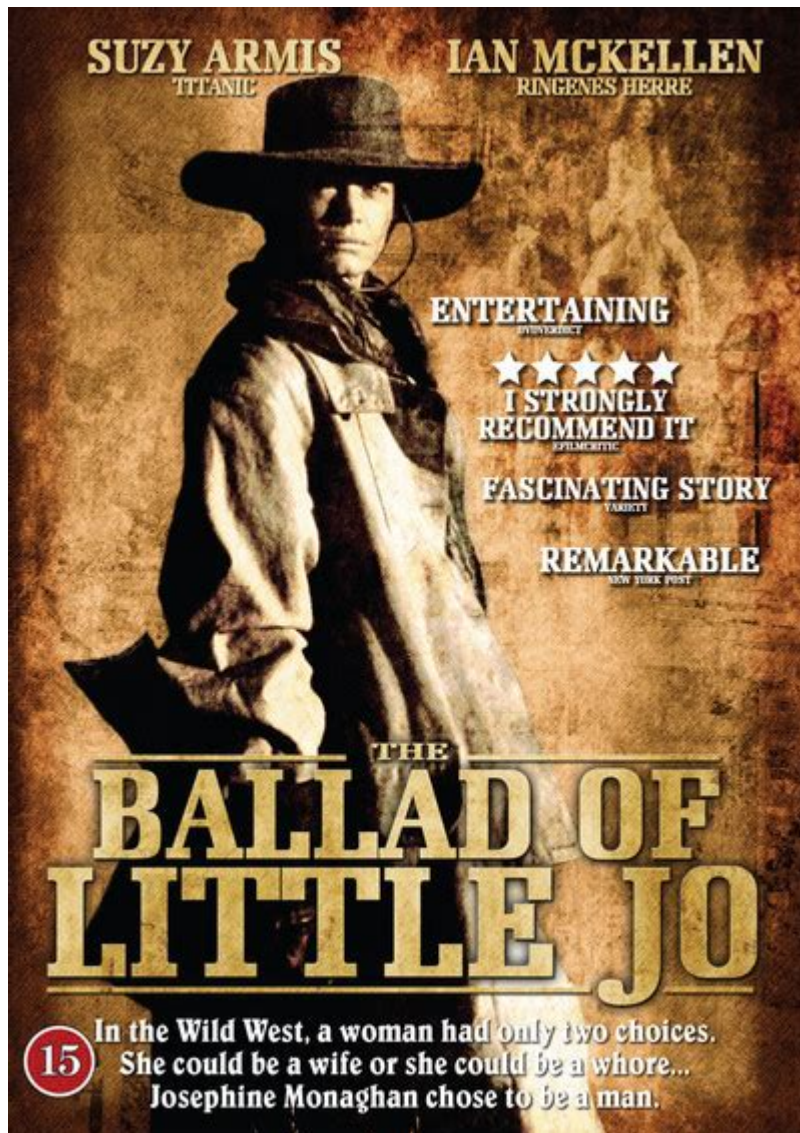


The Ballad Of Little Jo



The Ballad of Little Jo is a poignant film that invites viewers into the harsh realities of the American West during the late 19th century. Directed by Maggie Greenwald and released in 1993, this Western drama tells the story of a young woman who disguises herself as a man to find a better life. The film's narrative, themes, and character development offer a rich exploration of gender identity, survival, and the complexities of human relationships in a challenging environment.

Plot Summary

The film follows the life of Josephine "Jo" Monaghan, portrayed by Diane Lane, who faces a series of misfortunes in her hometown of 19th-century New York. After the death of her father, Jo's life takes a drastic turn when she decides to leave her old life behind and head west in search of a better

future. To survive in a male-dominated society, she disguises herself as a man, adopting the name "Jo."

As she travels to the mining town of Hart Mountain in Idaho, Jo encounters various challenges. The town is rife with male miners, and the harsh realities of frontier life become apparent. Despite her disguise, Jo demonstrates resilience, intelligence, and an unwillingness to conform to the traditional roles expected of women during that era.

Key Characters

The film features a range of characters who play significant roles in Jo's journey. These characters contribute to the depth and complexity of the narrative:

1. Josephine "Jo" Monaghan (Diane Lane) - The protagonist who disguises herself as a man to escape her past and find independence.
2. Tully (John Savage) - A kind-hearted, albeit troubled miner who forms a close bond with Jo, unaware of her true identity.
3. Mister (Bradley Whitford) - A rough and tough miner who offers Jo guidance but also embodies the dangers of the frontier life.
4. The Townsfolk - Various characters that Jo interacts with, representing the different attitudes and challenges she faces as a woman in disguise.

Thematic Exploration

The Ballad of Little Jo is rich in themes that resonate with contemporary audiences. The film presents a nuanced exploration of gender identity and the struggles women face in patriarchal societies. Below are some key themes:

1. Gender Identity and Role Reversal

Jo's decision to live as a man is a central theme that highlights the limitations placed on women in society. By adopting male clothing and behavior, Jo gains access to opportunities that would otherwise be denied to her. This role reversal invites viewers to question the rigidity of gender norms and the societal constructs that define masculinity and femininity.

2. Survival and Independence

The film emphasizes the theme of survival in a harsh environment. Jo's journey is one of self-reliance and determination. She learns to adapt to her surroundings, proving that strength comes in various forms. Her independence

is a powerful message about the capability of women to navigate and thrive in difficult circumstances.

3. Love and Relationships

Jo's relationships with other characters add emotional depth to the story. The bond she forms with Tully is complex and layered, revealing the difficulties of intimacy when identity is obscured. Their relationship serves as a poignant commentary on love, trust, and the challenges of understanding one another in a world filled with deception.

Cinematic Techniques

Maggie Greenwald's direction and the film's cinematography contribute significantly to its impact. The use of visual storytelling enhances the narrative and immerses the audience in the rugged beauty of the American West.

1. Cinematography

The film showcases stunning landscapes that reflect the vastness and isolation of the frontier. The cinematographer, John Thomas, captures both the beauty and brutality of the environment, mirroring Jo's internal struggles. The sweeping shots of mountains, valleys, and desolate towns serve as a backdrop to her journey.

2. Costume Design

Costume design plays a crucial role in the film, particularly in representing Jo's transformation. The clothing choices reflect her struggle with identity and societal expectations. As she dons men's clothing, the visual cues signal her defiance against traditional norms and her quest for autonomy.

Critical Reception

Upon its release, **The Ballad of Little Jo** received a mix of critical acclaim and recognition for its storytelling and performances. Diane Lane's portrayal of Jo was particularly praised, highlighting her ability to convey vulnerability and strength simultaneously. Critics noted that the film's exploration of gender and identity was ahead of its time, resonating with feminist themes that continue to be relevant today.

1. Awards and Nominations

The film garnered several accolades, showcasing its impact within the independent film circuit. While it may not have achieved blockbuster status, it remains a significant work in the Western genre and feminist cinema.

2. Audience Response

Audience reactions varied, with some viewers appreciating the film's authenticity and emotional depth, while others found the pacing slow. Nonetheless, those who connected with Jo's journey found inspiration in her resilience and determination.

Legacy and Cultural Impact

The Ballad of Little Jo has left a lasting impact on both the Western genre and discussions surrounding gender representation in film. It serves as an important reference point for later works that explore similar themes of identity and empowerment. The film's portrayal of a strong female lead in a traditionally male-centric genre paved the way for future stories that challenge stereotypes and highlight women's experiences.

1. Influence on Contemporary Cinema

In recent years, there has been a resurgence of films that focus on strong female protagonists and challenge traditional gender roles. Movies such as "The Hunger Games" and "Wild" echo the themes presented in **The Ballad of Little Jo**, showcasing the evolution of women's representation in cinema.

2. Continued Relevance

As conversations around gender identity and representation continue to evolve, the film remains relevant. It encourages viewers to reflect on societal norms and the ongoing struggle for equality and recognition across various spheres of life.

Conclusion

The Ballad of Little Jo is a compelling exploration of identity, survival, and the complexities of life in the American West. Through the character of

Jo, the film challenges traditional gender roles and offers a poignant commentary on the struggles women face in a patriarchal society. With its rich themes, strong performances, and stunning cinematography, the film remains a significant work that resonates with audiences today. As it continues to inspire discussions about gender and representation, **The Ballad of Little Jo** stands as a testament to the enduring power of storytelling in cinema.

Frequently Asked Questions

What is the central theme of 'The Ballad of Little Jo'?

The central theme of 'The Ballad of Little Jo' revolves around identity, resilience, and the challenges faced by a woman in a male-dominated society.

Who directed 'The Ballad of Little Jo'?

'The Ballad of Little Jo' was directed by Maggie Greenwald.

What year was 'The Ballad of Little Jo' released?

The film was released in 1993.

Who stars as the lead character, Jo, in the film?

The lead character, Jo, is portrayed by actress Suzy Amis.

How does 'The Ballad of Little Jo' reinterpret the Western genre?

The film reinterprets the Western genre by focusing on a female protagonist and exploring themes of gender and societal expectations, contrasting with traditional male-centric Western narratives.

What historical context is 'The Ballad of Little Jo' set in?

The film is set during the mid-19th century, specifically in the American West, during the Gold Rush era.

How does Jo's character challenge gender norms in the film?

Jo challenges gender norms by disguising herself as a man to navigate a harsh world and survive, defying the limitations placed on women of her time.

What is the significance of the title 'The Ballad of Little Jo'?

The title suggests a narrative quality, hinting at Jo's journey and struggles, reminiscent of traditional ballads that tell stories of characters facing adversity.

What role does community play in 'The Ballad of Little Jo'?

Community plays a significant role as Jo forms bonds with other characters, highlighting themes of acceptance and belonging despite her initial outsider status.

Has 'The Ballad of Little Jo' received any critical acclaim?

Yes, 'The Ballad of Little Jo' has been praised for its strong performances, particularly by Suzy Amis, and for its thoughtful exploration of gender and identity in a Western context.

Find other PDF article:

<https://soc.up.edu.ph/07-post/files?ID=IUL56-2359&title=arizona-common-core-standards-math.pdf>

The Ballad Of Little Jo

balladfolk -

Aug 29, 2011 · Ballad Folk ...

-

BALLAD (), ,

Björk -

2008 ...

R&B -

gospel call and respond ...

2077 -

(New Dawn Fades) Joy Division ...

[DLC](#)
[Champions' ...](#)
[DLC](#)
[100](#)

R&B
[R&B](#) -
 [R&B](#)

[toe](#) -
 Hear you 2015-7-22
 Because I Hear You
 Commit
 Ballad
 Boyo
 Song Silly toe

[Folk Music](#)
[wiki](#)
[Music of China](#)
[Folk Music](#)

Blur
The Ballad of Darren? -
 7.6/10
 The Ballad of Darren

[ballad](#)
[folk](#) -
 Aug 29, 2011 ·
 Ballad
 Ballad
 Folk
 Folk
 Ballad
 Vocal Jazz Standard
 Ballad

[BALLAD](#) (
 ,
 ,
 .

[Björk](#) -
 2008
 bjork
 All is full of love

R&B
[R&B](#) -
 gospel
 call and respond
 Blues
 Blues
 12

2077
[New Dawn Fades](#)
 Joy Division

[DLC](#)
[Champions' ...](#)
[DLC](#)
[100](#)

R&B
[R&B](#) -
 [R&B](#)

[toe](#) -
 Hear you 2015-7-22
 Because I Hear You
 Commit
 Ballad
 Boyo
 Song Silly toe
 toe
 hip-hop
 jazz

[Folk Music](#)
[wiki](#)
[Music of China](#)
[Folk Music](#)

BlurThe Ballad of Darren? -
7.6/10 The Ballad of Darren
The Ballad of Damon Albarn ...

Explore the captivating story of "The Ballad of Little Jo

[Back to Home](#)