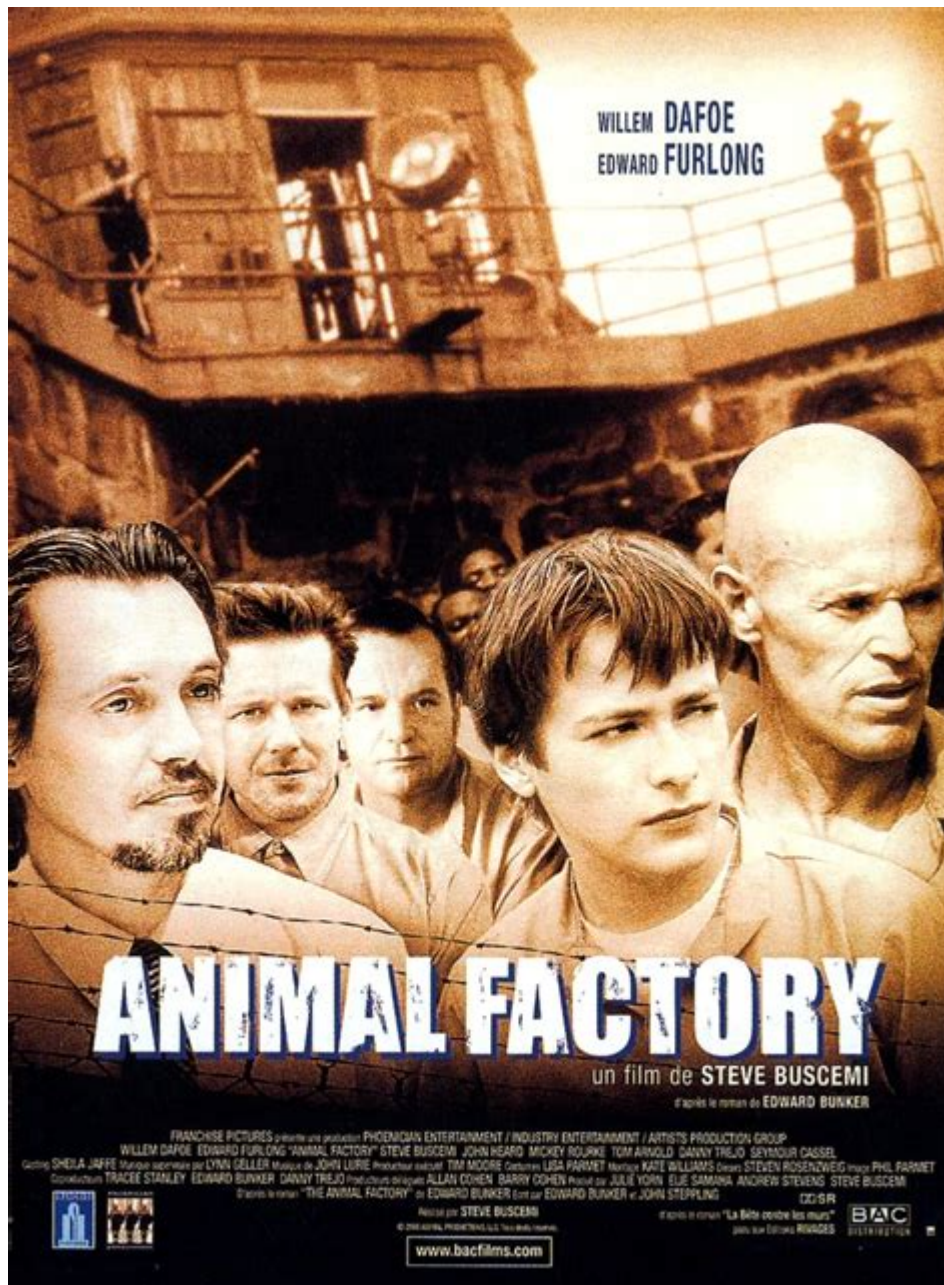


The Animal Factory



The animal factory is a term that evokes a vivid image of industrialized farming and the mass production of livestock. This practice, which has become increasingly prevalent over the last few decades, raises significant ethical, environmental, and health-related concerns. In this article, we will explore the concept of the animal factory, its implications for animal welfare, the environment, and human health, as well as alternatives to this system.

The Concept of the Animal Factory

The term "animal factory" refers to large-scale agricultural operations that focus on the intensive production of animals for food. These operations prioritize efficiency and profit, often at the expense

of animal welfare and environmental sustainability. The rise of the animal factory can be attributed to several factors:

1. **Increased Demand for Animal Products:** As the global population grows and incomes rise, there is a heightened demand for meat, dairy, and eggs.
2. **Technological Advancements:** Innovations in breeding, feeding, and veterinary care have allowed for higher productivity in animal husbandry.
3. **Globalization:** The international trade of animal products has encouraged the establishment of large-scale farming operations to meet global demands.

The Characteristics of Animal Factories

Animal factories are characterized by several defining features:

- **High Density:** Animals are often kept in crowded conditions, leading to stress and the spread of diseases.
- **Monoculture Farming:** A limited number of animal breeds are raised, focusing on those that offer the highest yield.
- **Automation and Mechanization:** Many tasks are automated, reducing labor costs but often neglecting the animals' welfare.
- **Use of Antibiotics and Hormones:** To promote growth and prevent disease in crowded conditions, antibiotics and hormones are commonly used.

Ethical Concerns

The ethical implications of animal factories are a significant point of contention. Critics argue that these operations prioritize profit over the well-being of animals. Some of the primary ethical concerns include: