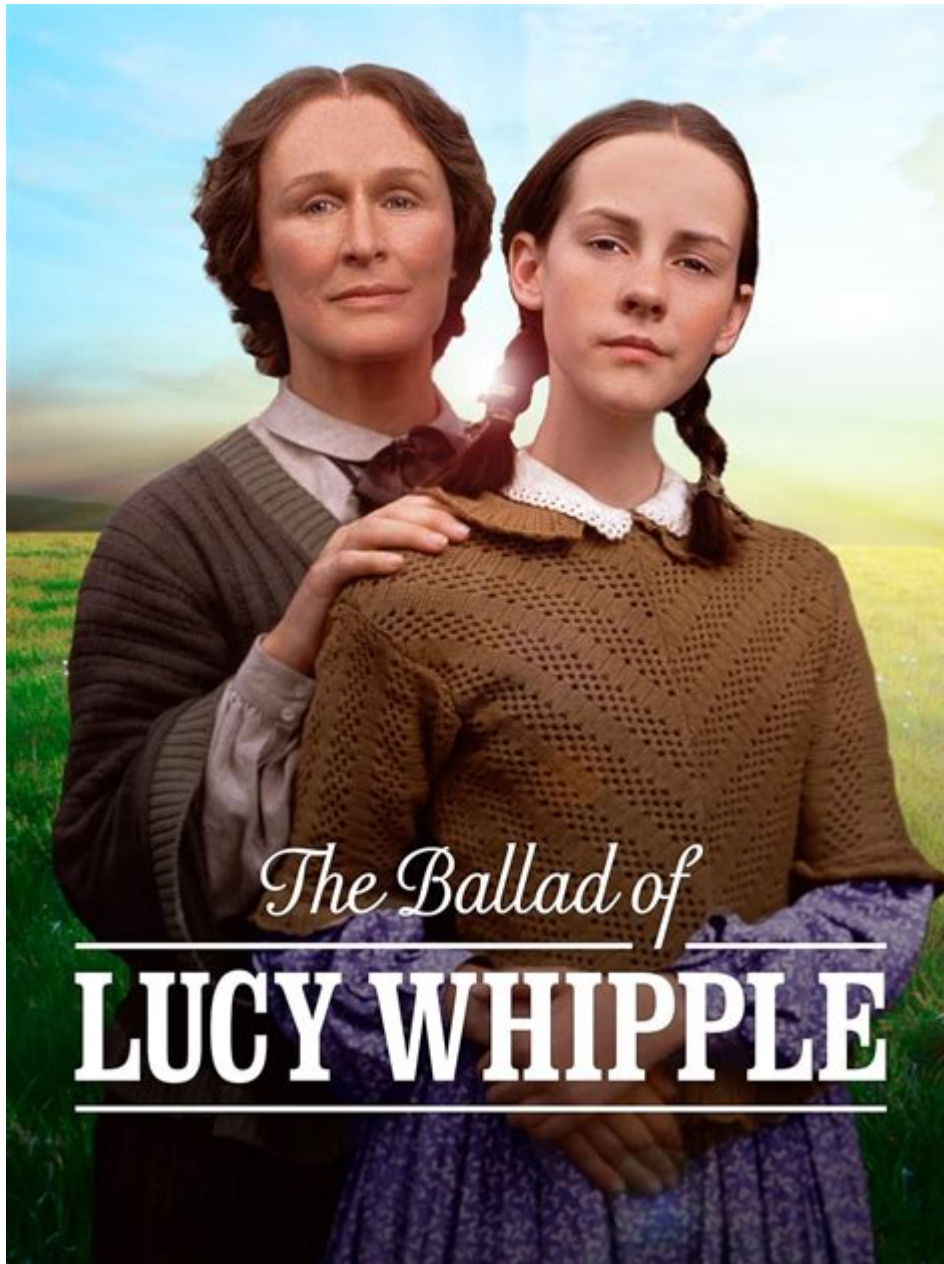


The Ballad Of Lucy Whipple



The Ballad of Lucy Whipple is a captivating historical novel written by Karen Cushman, set in the mid-19th century during the California Gold Rush. This engaging narrative follows the life of a young girl named Lucy Whipple, who navigates the challenges of life in a rugged and often harsh environment. With its rich themes of resilience, identity, and the pursuit of dreams, "The Ballad of Lucy Whipple" offers readers an insightful glimpse into the experiences of those who sought fortune and adventure during one of America's most transformative periods.

Overview of the Novel

Published in 2001, "The Ballad of Lucy Whipple" is a middle-grade novel that combines historical fiction with elements of adventure and personal growth. The story is narrated by Lucy, a spirited twelve-year-old girl who is uprooted from her comfortable life in Massachusetts when her mother decides to move the family to California in search of gold.

Main Characters

The novel features a cast of memorable characters, each contributing to Lucy's journey and the overall narrative. Here are some of the key figures:

- **Lucy Whipple:** The protagonist, a determined and imaginative girl who struggles with her new life in California.
- **Mother:** Lucy's ambitious mother, who is driven by the dream of finding gold and providing for her family.
- **Will Whipple:** Lucy's younger brother, who represents innocence and adaptability in their new surroundings.
- **Mr. Whipple:** Lucy's father, who plays a less prominent role but is a reminder of the family's past in Massachusetts.
- **Various townsfolk:** The residents of the mining town of Lucky Diggings, who provide a diverse perspective on life during the Gold Rush.

Thematic Exploration

"The Ballad of Lucy Whipple" delves into several significant themes that resonate with readers of all ages.

Resilience and Adaptability

One of the most prominent themes is resilience. Lucy's journey is marked by her ability to adapt to the

challenges she faces in California. While she initially resists the move and longs for her old life, she gradually learns to cope with the harsh realities of her new environment, showcasing her strength and determination.

Identity and Self-Discovery

As Lucy navigates her new life, she also embarks on a quest for self-discovery. The novel explores her struggle to maintain her identity while adapting to the expectations of her family and society. Through her experiences, readers witness her growth as she learns to embrace her individuality.

Family and Community

The importance of family and community is another central theme in the novel. Lucy's relationships with her family members and the people of Lucky Diggings highlight the significance of support systems during difficult times. The sense of belonging and connection that develops among the townsfolk illustrates the resilience of human relationships in the face of adversity.

Setting and Historical Context

The backdrop of "The Ballad of Lucy Whipple" is the California Gold Rush, a period that dramatically transformed the American West. The setting plays a vital role in shaping the characters and their experiences.

The Impact of the Gold Rush

The Gold Rush attracted thousands of people seeking wealth and opportunity, leading to the rapid development of mining towns. Lucy's family is among those drawn to California, illustrating the hopes and dreams that motivated many during this time. However, the novel also portrays the darker aspects of the Gold Rush, such as the harsh living conditions, social inequality, and the impact on indigenous populations.

Life in Lucky Diggings

Lucky Diggings, the fictional town where Lucy and her family settle, is depicted with vivid detail. Cushman paints a picture of a bustling yet rough environment, filled with miners, merchants, and families trying to make a life amidst the chaos. The town serves as both a backdrop for Lucy's adventures and a

microcosm of the larger societal changes occurring during the Gold Rush.

Writing Style and Literary Devices

Karen Cushman's writing style is characterized by its clarity and vivid imagery, making the historical setting come alive for readers. She employs several literary devices to enhance the narrative.

First-Person Narrative

The story is told from Lucy's perspective, allowing readers to connect deeply with her thoughts and feelings. This first-person narration gives an intimate glimpse into her struggles and triumphs, making her journey all the more relatable.

Humor and Wit

Despite the serious themes, Cushman infuses humor and wit into Lucy's character, providing moments of levity that balance the story's more somber elements. Lucy's clever observations and amusing anecdotes help to engage younger readers while also offering deeper insights into her character.

Critical Reception and Legacy

"The Ballad of Lucy Whipple" has received positive reviews for its engaging storytelling and well-developed characters. Critics have praised Cushman for her ability to bring history to life through relatable characters and meaningful themes.

Impact on Young Readers

The novel is often included in educational curricula, as it provides a valuable resource for teaching about the California Gold Rush and its impact on American history. Lucy's story encourages young readers to think critically about the past and reflect on their own identities and aspirations.

Adaptations and Related Works

While "The Ballad of Lucy Whipple" has not been adapted into film or television, its themes and characters resonate with other works of historical fiction that explore similar time periods and issues. Cushman's other novels, such as "Catherine, Called Birdy" and "The Midwife's Apprentice," also offer readers rich historical narratives and strong protagonists.

Conclusion

In conclusion, **The Ballad of Lucy Whipple** is a beautifully crafted novel that captures the essence of a pivotal moment in American history through the eyes of a young girl. With its compelling characters, rich themes, and vivid setting, the book invites readers to reflect on resilience, identity, and the complexities of human relationships. As Lucy Whipple navigates the challenges of life in Lucky Diggings, she becomes a symbol of hope and determination, inspiring readers to pursue their own dreams and embrace their unique identities. This timeless tale continues to resonate, making it a must-read for anyone interested in the intersection of history and personal growth.

Frequently Asked Questions

What is the main theme of 'The Ballad of Lucy Whipple'?

The main theme of 'The Ballad of Lucy Whipple' revolves around the pursuit of dreams and the struggles of adapting to new environments, particularly during the California Gold Rush.

Who is the protagonist of the story?

The protagonist of the story is Lucy Whipple, a young girl who moves with her family from Massachusetts to California during the Gold Rush.

How does Lucy's character develop throughout the novel?

Lucy evolves from a rebellious and unhappy girl, resistant to her new life in California, to someone who learns to embrace her circumstances and find her own identity.

What historical context is important for understanding the story?

The story is set during the California Gold Rush in the mid-1800s, which significantly shapes the characters' experiences and challenges as they seek fortune and a better life.

What role does family play in Lucy's journey?

Family plays a crucial role in Lucy's journey, as her relationships with her mother and siblings influence her decisions and emotional growth throughout the story.

How does the author, Karen Cushman, portray the setting of California during the Gold Rush?

Karen Cushman vividly portrays California during the Gold Rush as a place of both opportunity and hardship, highlighting the contrasting experiences of wealth and poverty faced by the characters.

What literary devices does Cushman use to enhance the narrative?

Cushman uses vivid imagery, humor, and first-person narrative to create an engaging and relatable story, allowing readers to connect deeply with Lucy's experiences and emotions.

Find other PDF article:

<https://soc.up.edu.ph/21-brief/files?docid=fEX46-5171&title=examples-of-resilience-in-history.pdf>

The Ballad Of Lucy Whipple

ballad folk -

Aug 29, 2011 · Ballad Folk ...

-

BALLAD (), ,

Björk -

2008 ...

R&B -

gospel call and respond ...

2077 -

(New Dawn Fades) Joy Division ...

DLC Champions' ...

DLC 100 ...

R&B - 音乐 - 音乐 - 音乐

R&B - 音乐 - 音乐 - 音乐

toe - 音乐

Hear you 2015-7-22 Because I Hear You Commit Ballad Boyo Song Silly toe ...

toe - 音乐

Folk Music wiki Music of China Folk Music ...

Blur - 音乐

7.6/10 The Ballad of Darren ...

ballad - 音乐

Aug 29, 2011 · Ballad Folk ...

Ballad - 音乐

BALLAD (音乐), 音乐, 音乐, 音乐. ...

Björk - 音乐

2008 ...

R&B - 音乐

gospel call and respond ...

2077 - 音乐

(New Dawn Fades) Joy Division ...

DLC - 音乐

DLC 100 ...

R&B - 音乐

R&B - 音乐 - 音乐 - 音乐

toe - 音乐

Hear you 2015-7-22 Because I Hear You Commit Ballad Boyo Song Silly toe ...

toe - 音乐

Folk Music wiki Music of China Folk Music ...

Blur - 音乐

7.6/10 The Ballad of Darren ...

Discover the enchanting story of 'The Ballad of Lucy Whipple.' Uncover themes of adventure and resilience in this captivating tale. Learn more now!

[Back to Home](#)