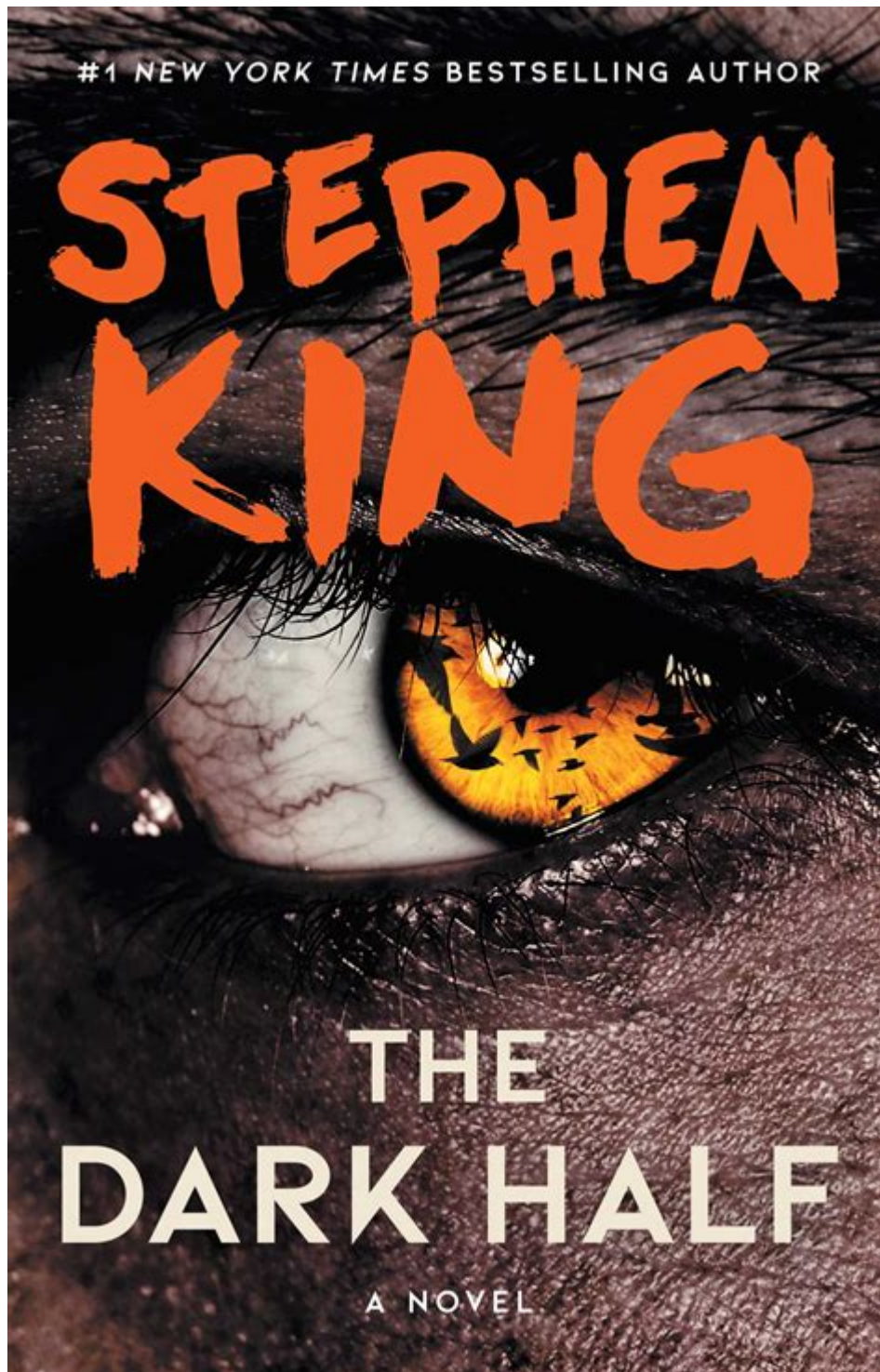


# The Dark Half By Stephen King



## Introduction to The Dark Half

**The Dark Half** is a gripping novel by the renowned author Stephen King, published in 1989. This book delves into the complexities of duality, identity, and the darker aspects of creativity. It tells the story of Thad Beaumont, a writer who faces a terrifying reality when his pseudonym, George Stark,

comes to life in a sinister manner. King expertly weaves themes of fear, horror, and the psychological struggles that accompany the creative process, making this novel a compelling read for both fans of horror and those interested in the intricacies of the writing life.

## Overview of the Plot

The narrative follows Thad Beaumont, a successful author who has written several novels under the pen name George Stark. Stark is known for his violent and graphic storytelling, which starkly contrasts with Beaumont's more refined literary style. The story begins when Thad decides to "kill off" his pseudonym, which he believes represents the darker side of his creativity. However, this act unleashes a series of chilling events.

## The Emergence of George Stark

After Thad's public announcement about Stark's death, he finds himself embroiled in a nightmare. Stark is not just a fictional creation; he manifests into a real entity, seeking vengeance for his demise. This leads to a series of gruesome murders that seem to echo the violent themes of Stark's novels. Thad must confront the reality that he has given life to a violent alter ego who is now determined to destroy him.

## Thematic Exploration

Stephen King explores several themes in *The Dark Half*, including:

- **Identity and Duality:** The struggle between Thad and Stark represents the duality of human nature. Thad embodies the civilized, rational side, while Stark represents chaos and violence.
- **The Nature of Evil:** The novel raises questions about the origins of evil and whether it is inherent to humanity or a product of external circumstances.
- **The Creative Process:** King delves into the psychological implications of writing, including the fear of losing control over one's creations.

## Character Analysis

The depth of King's characters adds to the richness of the narrative. Here are some key characters:

1. **Thad Beaumont:** The protagonist and a successful author, Thad grapples with the consequences of his literary choices. His internal conflict reflects the broader theme of identity.

2. **George Stark:** Thad's pseudonym, who becomes his malevolent counterpart. Stark's character personifies the darker impulses that reside within Thad.
3. **Liz Beaumont:** Thad's supportive wife, who provides a grounding presence amidst the chaos. Her character offers insight into Thad's struggles and highlights the impact of his choices on personal relationships.
4. **Detective John:** The local investigator who becomes involved in the murders linked to Stark. His perspective adds a layer of realism to the unfolding horror.

## Literary Style and Techniques

Stephen King's writing style is notable for its vivid imagery and psychological depth. In *The Dark Half*, he employs various literary techniques:

### Imagery and Symbolism

King uses potent imagery to evoke fear and tension. The character of George Stark serves as a symbol of the darker aspects of creativity. Stark's violent actions reflect how unchecked creativity can spiral into chaos. Additionally, the imagery of the graveyard symbolizes Thad's attempt to bury parts of himself that he finds unacceptable.

### Foreshadowing

King skillfully employs foreshadowing throughout the novel. Early hints about Stark's re-emergence create a sense of inevitability, building tension as the story progresses. Readers are kept on edge, anticipating the confrontation between Thad and Stark.

## Critical Reception

Upon its release, *The Dark Half* received mixed reviews. While some critics praised King's exploration of the creative process and psychological themes, others felt that the narrative was uneven. However, it has since gained recognition as a significant work that reflects King's ability to blend horror with deeper philosophical inquiries.

### Positive Aspects

- **Psychological Depth:** Many readers appreciate the psychological intricacies that King weaves into the story, making it more than just a horror novel.

- Character Development: Thad's internal struggle is portrayed with nuance, allowing readers to connect with his journey.
- Intense Atmosphere: King's ability to create an eerie atmosphere keeps readers engaged and enhances the horror elements of the narrative.

## Critiques

- Pacing Issues: Some readers have noted that certain sections of the book feel slow, which may detract from the overall tension.
- Predictability: A few critics argue that the plot follows predictable horror tropes, which can lessen the impact of the story for seasoned readers.

## Adaptations

The Dark Half was adapted into a film in 1993, directed by George A. Romero. The movie, while maintaining the core elements of the novel, received mixed reviews. Fans of King's work often debate the effectiveness of adaptations, with some feeling that the depth of the source material is challenging to capture on screen.

## Conclusion

In conclusion, Stephen King's *The Dark Half* stands as a significant exploration of the complexities of identity and the duality of human nature. Through the lens of horror, King examines the creative process and the darker sides that can accompany artistic expression. While the novel may have its critics, its themes resonate with anyone who has grappled with the challenges of self-identity and the consequences of their choices. As a reflection of King's literary prowess, *The Dark Half* remains a compelling read for fans of horror and literature alike, inviting readers to confront their own "dark halves" and consider the impact of their creative endeavors.

## Frequently Asked Questions

### What is the main premise of 'The Dark Half' by Stephen King?

The story revolves around Thad Beaumont, a writer who has a pseudonym named George Stark. When Thad decides to retire the pseudonym, Stark comes to life and begins to wreak havoc, leading Thad into a dark conflict with his own creation.

### How does 'The Dark Half' explore the theme of duality?

The novel delves into the duality of human nature by showcasing the struggle between Thad's civilized personality and the violent tendencies embodied by George Stark, illustrating the internal battle between the light and dark aspects of oneself.

## What role does the small town of Castle Rock play in 'The Dark Half'?

Castle Rock serves as a recurring setting in Stephen King's works, including 'The Dark Half.' It provides a familiar backdrop that enhances the eerie atmosphere and connects the story to King's broader fictional universe.

## What are some significant symbols in 'The Dark Half'?

Key symbols include the crow, which represents death and the darker aspects of life, and Thad's writing tools, which symbolize creativity and the power of storytelling, as well as the consequences that come with it.

## How does Thad Beaumont's character evolve throughout the novel?

Thad starts as a successful author struggling with his identity and the decision to kill off his pseudonym. As the plot unfolds, he is forced to confront his darker impulses and ultimately learns to accept both sides of his personality.

## What psychological themes are present in 'The Dark Half'?

The novel explores themes of identity, repression, and the psychological impact of creativity, highlighting how the act of writing can lead to the manifestation of one's hidden fears and darker desires.

## How does King use horror elements in 'The Dark Half'?

King employs horror elements through the supernatural presence of George Stark, graphic violence, and a suspenseful atmosphere that builds tension, forcing readers to confront the horrifying consequences of creative expression gone awry.

Find other PDF article:

<https://soc.up.edu.ph/22-check/pdf?docid=YlB91-8048&title=financial-planning-worksheet-for-couples.pdf>

## [The Dark Half By Stephen King](#)

Dark (Serial TV 2017-2020) - Filmweb

Oct 18, 2017 · Dark (2017) - Zaginięcie dzieci ujawnia podwójne życie i nadszarpnięte relacje członków czterech rodzin, łącząc się z wydarzeniami sprzed trzydziestu lat.

12 z Netflix (Dark) -

Dark 10 -  
 -

Jun 29, 2025 · (S3) 24 UTC+8  
00:00 = 10:00 50 4 VIP VIP ...

Nov 13, 2024 · [Dark War:Survival](#)

dark  
 $\sigma^{\dagger}$  ...

[illegible]

Netflix Dark

Jun 27, 2020 · => DARK & Q&A 300 /

W mroku słońca (2025) Soleil noir - Młoda matka ucieka przed trudną przeszłością i zostaje oskarżona o zabójstwo swojego nowego szefa na plantacji róż, po czym odkrywa, że to on jest jej...

[illegible]

Oct 18, 2017 · Dark (2017) - Zaginięcie dzieci ujawnia podwójne życie i nadszarpnięte relacje członków czterech rodzin, łącząc się z wydarzeniami sprzed trzydziestu lat.

Dark 10

Jun 29, 2025 · 00:00 (S3) 24 UTC+8 10:00 50 4 VIP VIP ...

Nov 13, 2024 · 11:00 AM · Dark War: Survival

dark  $\sigma^{\dagger}$  ...

```

Dark Reader
Dark Reader
XD

```

Netflixa i Darka

**Netflix** i **Dark** -

Netflix i Dark

2020 6 27 Netflix i Dark

Jun 27, 2020 · => DARK i Q&A 3 /

**W mroku słońca (Serial TV 2025- ) - Filmweb**

W mroku słońca (2025) Soleil noir - Młoda matka ucieka przed trudną przeszłością i zostaje oskarżona o zabójstwo swojego nowego szefa na plantacji róż, po czym odkrywa, że to on jest jej...

**Dark War:Survival** -

Dark War:Survival ...

Explore "The Dark Half" by Stephen King

[Back to Home](#)