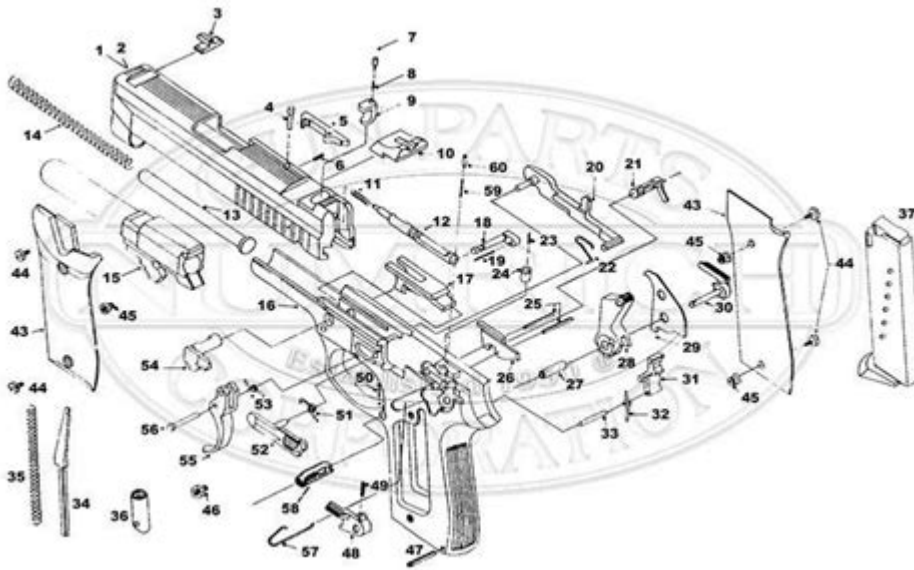


# Taurus 605 Parts Diagram



Taurus 605 Parts Diagram is an essential reference for enthusiasts and owners of this popular revolver. Understanding the various components of the Taurus 605 can greatly assist with maintenance, repairs, and customization of the firearm. The Taurus 605, a .357 Magnum revolver, is known for its reliability, lightweight design, and ease of use, making it a favored choice among concealed carry enthusiasts and recreational shooters alike. In this article, we will explore the various parts of the Taurus 605, their functions, and how they fit into the overall operation of the firearm.

## Overview of the Taurus 605

The Taurus 605 is a small-frame revolver designed to accommodate both .357 Magnum and .38 Special cartridges. It features a five-round cylinder and is built with a stainless-steel frame that combines durability with a sleek appearance. The revolver is available in multiple configurations, including different barrel lengths and finishes, which contribute to its versatility.

## Key Features of the Taurus 605

1. **Caliber:** The Taurus 605 is designed to fire .357 Magnum cartridges, but it can also chamber .38 Special rounds, providing users with flexibility in ammunition choice.
2. **Frame Material:** Made from stainless steel, the frame is corrosion-resistant and offers robust protection against wear and tear.
3. **Barrel Length:** The Taurus 605 typically comes with a 2-inch barrel, making it easy to conceal while still delivering substantial firepower.

4. Weight: Weighing approximately 24 ounces, the revolver is light enough for comfortable carry yet heavy enough to mitigate recoil.
5. Sights: Equipped with fixed sights, the Taurus 605 allows for quick target acquisition, which is crucial in defensive situations.

## Understanding the Parts Diagram

The parts diagram of the Taurus 605 provides a visual representation of the revolver's components, making it easier for users to identify and understand each part's function.

## Main Components of the Taurus 605

The following is a breakdown of the main components found in the Taurus 605 parts diagram:

- Frame: The structural backbone of the revolver that houses the firing mechanism and supports other components.
- Cylinder: Holds the cartridges and rotates to align each round with the barrel for firing.
- Barrel: The tube through which the bullet travels upon firing.
- Hammer: The component that strikes the firing pin to ignite the cartridge.
- Trigger: The lever that the shooter pulls to initiate the firing sequence.
- Trigger Guard: Protects the trigger from accidental discharge.
- Grip: The part that the user holds, which can be customized for comfort and control.
- Firing Pin: Strikes the primer of the cartridge to initiate firing.
- Ejector Rod: Used to extract spent cartridges from the cylinder after firing.

## Detailed Component Functions

Understanding the function of each component can enhance the user's experience and knowledge of the Taurus 605.

### 1. Frame

- The frame is made of high-quality stainless steel, providing strength and stability. It contains the trigger mechanism and other internal components. The design also includes a mounting point for the sights.

### 2. Cylinder

- The cylinder rotates to position each cartridge in line with the barrel. It features a locking mechanism that ensures it remains secure during firing. The five-round capacity makes it compact yet effective for personal defense.

### 3. Barrel

- The barrel's rifling is designed to impart spin on the bullet for greater accuracy. The short length of the Taurus 605's barrel aids in concealment while still allowing for effective shot placement.

### 4. Hammer

- The hammer can be either exposed or concealed, depending on the model. An exposed hammer allows for single-action firing, while a concealed hammer is ideal for snag-free drawing from a holster.

### 5. Trigger

- The trigger mechanism is designed for smooth operation. The Taurus 605 features a double-action/single-action (DA/SA) trigger system, allowing for quick follow-up shots in double-action mode or more deliberate firing in single-action mode.

### 6. Trigger Guard

- The trigger guard is a safety feature that prevents accidental discharge. It is an essential part of firearm safety, ensuring that the trigger is not inadvertently pulled.

### 7. Grip

- The grip can be customized with various materials and textures to suit the user's preference. A proper grip enhances control and reduces recoil, improving shooting accuracy.

### 8. Firing Pin

- The firing pin is crucial for ignition of the cartridge. It is spring-loaded and strikes the primer with sufficient force to ensure reliable firing.

### 9. Ejector Rod

- After firing, the ejector rod is used to push spent cartridges out of the cylinder, allowing for quick reloading. Its location is strategically designed for easy access.

## **Maintenance and Repair of Taurus 605 Parts**

Regular maintenance is essential to keep the Taurus 605 functioning optimally. Understanding the parts diagram can significantly aid in this process.

### **Routine Maintenance Tips**

#### 1. Cleaning:

- After each use, clean the barrel, cylinder, and other exposed parts to remove residue and prevent corrosion.

- Use a cleaning rod and appropriate brushes to clean the bore and chambers.

## 2. Lubrication:

- Apply a light coat of gun oil to moving parts such as the trigger mechanism and hammer to ensure smooth operation.
- Avoid over-lubricating, as excess oil can attract debris.

## 3. Inspection:

- Regularly inspect the revolver for any signs of wear or damage, particularly around the cylinder lock-up and the barrel.
- Check the grip and trigger for any looseness or wear that may affect performance.

## 4. Parts Replacement:

- If any components show signs of significant wear, such as the firing pin or springs, consider replacing them. Refer to the parts diagram for identification.
- Always use genuine Taurus parts to ensure compatibility and reliability.

# When to Seek Professional Help

While many maintenance tasks can be performed by the owner, certain repairs may require professional gunsmithing:

- If the revolver experiences misfires or fails to function properly.
- If there is visible damage to the frame, cylinder, or other critical components.
- For detailed internal cleaning or repairs that require disassembly beyond the owner's capability.

# Conclusion

The Taurus 605 parts diagram serves as an invaluable tool for both novice and experienced firearm owners. By familiarizing oneself with the various components and their functions, users can ensure proper maintenance and troubleshoot issues effectively. Whether for personal defense or recreational shooting, understanding the parts and care of the Taurus 605 enhances the overall experience and reliability of this trusted revolver.

# Frequently Asked Questions

## What is the purpose of the Taurus 605 parts diagram?

The Taurus 605 parts diagram provides a detailed visual representation of the firearm's components, helping users understand the assembly, disassembly, and

maintenance of the gun.

## **Where can I find a high-quality Taurus 605 parts diagram?**

High-quality Taurus 605 parts diagrams can typically be found on the manufacturer's official website, firearms forums, or in user manuals available for download.

## **Is it important to refer to the Taurus 605 parts diagram when replacing parts?**

Yes, referring to the Taurus 605 parts diagram is crucial when replacing parts to ensure correct installation and to avoid damaging the firearm.

## **Can I use a Taurus 605 parts diagram for other Taurus models?**

While some parts may be similar, it is advisable to use the specific parts diagram for the Taurus 605, as other models may have different components and configurations.

## **Are there any online communities where I can discuss the Taurus 605 parts diagram?**

Yes, there are many online communities, such as firearms forums and social media groups, where enthusiasts discuss the Taurus 605, share parts diagrams, and offer maintenance tips.

Find other PDF article:

<https://soc.up.edu.ph/61-page/pdf?trackid=1hq63-4055&title=the-secret-river-chapter-summaries.pdf>

## **Taurus 605 Parts Diagram**

*Taurus Zodiac Sign - Astrology Answers*

Taurus Quadruplicity The zodiac signs are divided into four elements (Fire, Water, Earth, and Air) and quadruplicities (Cardinal, Mutable or Fixed). The Quadruplicities, like the elements, ...

*Taurus Daily Horoscope: Tomorrow - Astrology Answers*

Read your free online Taurus daily horoscope for tomorrow! Use these expert astrology predictions and discover what your daily horoscope has in store.

**Taurus Daily Horoscope - Astrology Answers**

2 days ago · Read your free online Taurus daily horoscope for today! Use these expert astrology predictions and discover what your daily horoscope has in store.

### **Taurus Love Horoscope - Astrology Answers**

2 days ago · Read your free online Taurus love horoscope for today! Use these expert astrology predictions to improve relationships and your love life.

*Taurus & Taurus: Love Compatibility | Astrology Answers*

Learn more about the compatibility of Taurus and Taurus in love, sex and life. Your love horoscope compatibility is waiting for you here!

### Taurus Weekly Horoscope - Astrology Answers

Jul 21, 2025 · Read your free online Taurus weekly horoscope for the best astrology insights from our expert astrologers! What will this week bring for you, Taurus?

### **Where is Taurus in Your Birth Chart? - Astrology Answers**

Apr 29, 2025 · Where does Taurus live in your birth chart? Embrace your inner Bull and check out your natal Taurus placements.

### **June 2025 Monthly Forecast - Astrology Answers**

May 31, 2025 · Dive into June with Venus in Taurus, Mercury's heartfelt shift, and Jupiter's lucky entry into Cancer. Experience love, growth, and blessings this month!

### Taurus Money Horoscope - Astrology Answers

1 day ago · Read your free online Taurus money horoscope for today to improve your financial situation and attract abundance using astrology's predictions.

*Your Mercury Retrograde in Leo Survival Guide - Astrology Answers*

Jul 11, 2025 · Another round of Mercury retrograde kicks off on July 18th 2025, and this one is entirely in Leo! Find out how to navigate Mercury RX based on your zodiac sign.

### **Taurus Zodiac Sign - Astrology Answers**

Taurus Quadruplicity The zodiac signs are divided into four elements (Fire, Water, Earth, and Air) and ...

### Taurus Daily Horoscope: Tomorrow - Astrology Answers

Read your free online Taurus daily horoscope for tomorrow! Use these expert astrology predictions and ...

*Taurus Daily Horoscope - Astrology Answers*

2 days ago · Read your free online Taurus daily horoscope for today! Use these expert astrology predictions ...

### **Taurus Love Horoscope - Astrology Answers**

2 days ago · Read your free online Taurus love horoscope for today! Use these expert astrology predictions to ...

*Taurus & Taurus: Love Compatibility | Astrology Ans...*

Learn more about the compatibility of Taurus and Taurus in love, sex and life. Your love horoscope compatibility is ...

Explore our comprehensive Taurus 605 parts diagram to identify components easily. Get detailed insights and find what you need. Learn more today!

[Back to Home](#)