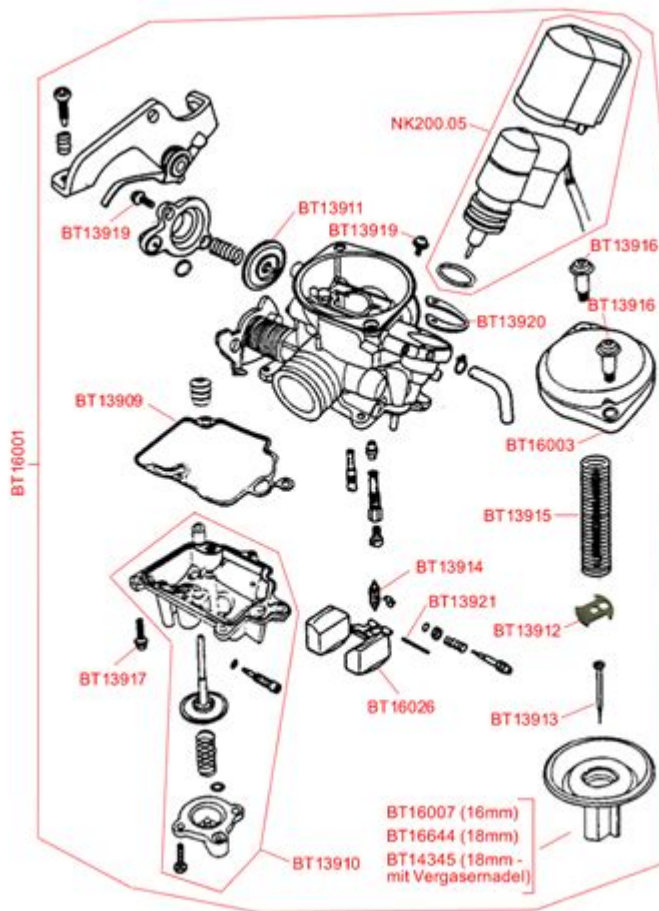


# Taotao 50cc Scooter Carburetor Diagram



**TaoTao 50cc Scooter Carburetor Diagram** serves as an essential resource for understanding the inner workings of your TaoTao scooter's engine. A carburetor is a crucial component in internal combustion engines, including scooters, as it mixes air and fuel to create a combustible mixture that powers the engine. For TaoTao scooter owners, familiarity with the carburetor diagram can assist in troubleshooting issues, performing maintenance, and optimizing performance. This article will delve into the details of the TaoTao 50cc scooter carburetor, providing insights into its design, functionality, and maintenance practices.

## Understanding the Carburetor's Role

The carburetor plays a pivotal role in the operation of a scooter's engine. It performs the following key functions:

1. **Air-Fuel Mixture Preparation:** The carburetor mixes air and fuel in the correct ratio for combustion. A proper mixture is crucial for efficient engine performance.
2. **Regulation of Airflow:** The carburetor regulates the amount of air entering

the engine, which directly affects the engine's power output and efficiency.

3. **Fuel Atomization:** It atomizes the fuel for better combustion, improving power and reducing emissions.

## Components of the TaoTao 50cc Carburetor

To fully comprehend the TaoTao 50cc scooter carburetor diagram, it's essential to understand the various components that make up the carburetor. Here's a breakdown of the primary parts:

- **Float Chamber:** Maintains a constant fuel level and ensures a steady supply of fuel to the carburetor.
- **Jets:** Small openings that control the flow of fuel and air. Common types include the main jet and pilot jet.
- **Needle and Seat:** Regulate the flow of fuel from the float chamber into the carburetor throat.
- **Throttle Valve:** Controls the amount of air-fuel mixture entering the engine, thus regulating engine speed.
- **Choke Valve:** Aids in starting the engine by enriching the fuel mixture when cold.
- **Air Filter:** Filters incoming air to ensure that dust and debris do not enter the engine.

## How the Carburetor Works

Understanding how a carburetor functions is crucial for diagnosing performance issues. Here's a simplified overview of the operational process:

1. **Air Intake:** As the scooter engine operates, air is drawn into the carburetor through the air filter.
2. **Fuel Draw:** The airflow creates a vacuum that draws fuel from the float chamber through the jets.
3. **Mixing:** The fuel is atomized and mixed with the incoming air in the carburetor throat.
4. **Throttle Control:** The throttle valve opens or closes depending on the rider's input, adjusting the air-fuel mixture entering the engine.
5. **Combustion:** The mixture enters the engine's combustion chamber, where it is ignited to produce power.

# Reading the Carburetor Diagram

A carburetor diagram is a visual representation of the carburetor's components and their interconnections. Here's how to interpret the key elements of a typical TaoTao 50cc carburetor diagram:

## Component Labels

Each part of the carburetor is labeled in the diagram, making it easier to identify and understand each function. Common labels include:

- Inlet Port: Where fuel enters the carburetor.
- Jet Locations: Indicate where the main and pilot jets are located.
- Throttle and Choke Valves: Show the positions of the throttle and choke mechanisms.

## Flow Arrows

Many diagrams include arrows that indicate the flow of air and fuel through the carburetor. Understanding the flow direction is vital for troubleshooting and ensures that all components work harmoniously.

## Schematic Symbols

Familiarize yourself with common schematic symbols used in carburetor diagrams. These may include circles for valves, triangles for jets, and lines for fuel passages. Knowing these symbols will aid in your understanding of the overall system.

## Troubleshooting Common Carburetor Issues

Carburetor problems can lead to poor engine performance or starting issues. Here are some common issues and their potential solutions:

1. **Engine Won't Start:** Check the choke to ensure it is functioning correctly. A blocked jet or fuel line could also be the culprit.
2. **Rough Idling:** This may indicate an air leak or clogged jet. Cleaning the carburetor can often resolve this issue.
3. **High Fuel Consumption:** An overly rich fuel mixture caused by a

malfunctioning float or misadjusted needle can lead to increased fuel usage.

4. **Engine Stalling:** This can occur if the fuel supply is interrupted or if there's a problem with the throttle valve.

## Maintenance Tips for Your Carburetor

Regular maintenance can prolong the life of your TaoTao scooter's carburetor and enhance performance. Here are some essential maintenance tips:

- **Regular Cleaning:** Clean the carburetor periodically to prevent buildup of dirt and debris. Use carburetor cleaner and a soft brush for effective cleaning.
- **Inspect Fuel Lines:** Check fuel lines for cracks or blockages to ensure a steady fuel flow.
- **Adjusting Jets and Needles:** Make sure jets and needles are properly adjusted to achieve the correct air-fuel ratio.
- **Check for Leaks:** Inspect all connections for fuel leaks, which can indicate a problem with the carburetor or fuel system.

## Conclusion

The **TaoTao 50cc scooter carburetor diagram** is more than just a schematic; it is a vital tool for anyone looking to maintain or repair their scooter. Understanding the components and their functions can empower scooter owners to troubleshoot problems effectively and carry out necessary adjustments and maintenance. By familiarizing yourself with the carburetor's operation and following proper maintenance practices, you can ensure that your TaoTao scooter runs smoothly, efficiently, and reliably. Whether you are a seasoned mechanic or a novice scooter owner, this knowledge is invaluable for keeping your scooter in top shape.

## Frequently Asked Questions

## **What is the purpose of the carburetor in a TaoTao 50cc scooter?**

The carburetor mixes air and fuel in the correct ratio to ensure efficient combustion in the engine, which is essential for optimal performance and fuel efficiency.

## **Where can I find a carburetor diagram for my TaoTao 50cc scooter?**

You can find a carburetor diagram in the owner's manual, on the manufacturer's website, or through online forums and repair websites dedicated to TaoTao scooters.

## **How do I read a carburetor diagram for a TaoTao 50cc scooter?**

To read a carburetor diagram, identify the labeled parts such as the float, needle valve, jets, and throttle, and understand how they interact within the assembly for fuel delivery.

## **What common issues can a malfunctioning carburetor cause in a TaoTao 50cc scooter?**

Common issues include poor acceleration, difficulty starting, stalling, and decreased fuel efficiency, often caused by clogs, incorrect adjustments, or worn parts.

## **Can I clean the carburetor without a diagram for my TaoTao 50cc scooter?**

While it's possible to clean the carburetor without a diagram, having one can help you understand where to disassemble and which parts to focus on for cleaning.

## **Do I need to adjust the carburetor settings after cleaning it on a TaoTao 50cc scooter?**

Yes, after cleaning, you may need to adjust the idle speed and air-fuel mixture settings to ensure the scooter runs smoothly and efficiently.

## **What tools do I need to work on the carburetor of my TaoTao 50cc scooter?**

You typically need a screwdriver set, pliers, a wrench set, and carburetor cleaner or a soaking solution, along with a clean workspace.

**Is it necessary to replace the carburetor if I have a damaged diagram?**

Not necessarily. You can often find replacement parts or detailed online resources to help you repair your existing carburetor without needing to replace it entirely.

## What should I do if my TaoTao 50cc scooter still won't run correctly after carburetor maintenance?

If issues persist, check other components like the fuel lines, air filter, and spark plug, or consider seeking professional help for further diagnosis.

Find other PDF article:

<https://soc.up.edu.ph/16-news/files?trackid=FEq06-9766&title=david-filo-and-jerry-yang.pdf>

## Taotao 50cc Scooter Carburetor Diagram

# TapTap - TapTap

TapTap [ ] [ ] TapTap

TapTap CN 中国版 apk 下载 - TapTap

TapTap TapTap CN app apk iOS 20 1 30 3500 ...

TapTap -

TapTap 2 1 30 3500 ...

□□□□□□□□□□ - □□□□□□□□ - TapTap

TapTap [Progress bar]

TapTap - TapTap - TapTap

[illegible]

□□□□ - □□□□□□□□ - TapTap

```

SteamTapTap 1.4.49564

```

□.□□□□ - TapTap

1. 在 iOS 设备上，使用 0.1GB 的存储空间。

## PC - TapTap

PC

## [TapTap - TapTap](#)

TapTap 1.4.49564

TapTap 1.4.49564 - TapTap ...

TapTap 1.4.49564 - TapTap ...

## [TapTap - TapTap](#)

TapTap 1.4.49564 - TapTap

## [TapTap CN apk - TapTap](#)

TapTap CN apk 1.4.49564 - TapTap

## [TapTap - TapTap](#)

TapTap 1.4.49564 - TapTap

## [TapTap - TapTap](#)

TapTap 1.4.49564 - TapTap

## [TapTap - TapTap](#)

Jul 12, 2025 · TapTap TapTap 1.4.49564 - TapTap

## [TapTap - TapTap](#)

TapTap 1.4.49564 - TapTap

## [TapTap - TapTap](#)

TapTap 1.4.49564 - TapTap

## [PC - TapTap](#)

PC 1.4.49564 - TapTap

## [TapTap - TapTap](#)

TapTap 1.4.49564 - TapTap

TapTap 1.4.49564 - TapTap ...

TapTap 1.4.49564 - TapTap ...

Unlock the secrets of your Taotao 50cc scooter with our detailed carburetor diagram. Learn more about parts

[Back to Home](#)