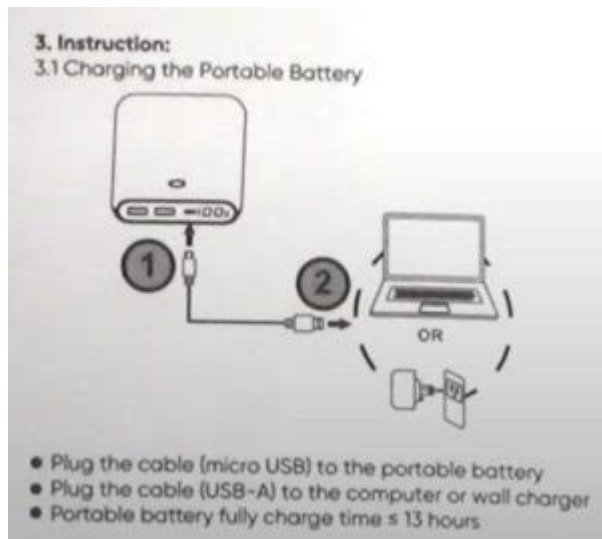


Tech 2 Portable Charger Instructions



Tech 2 portable charger instructions are crucial for anyone looking to keep their devices powered on the go. Whether you're traveling, commuting, or simply spending a day out, a portable charger is an essential accessory. This article will guide you through the features, usage, and maintenance of Tech 2 portable chargers, ensuring you maximize their potential and enjoy uninterrupted power for your devices.

Understanding Your Tech 2 Portable Charger

Before diving into the instructions, let's familiarize ourselves with the Tech 2 portable charger. This device is designed to provide a convenient power source for smartphones, tablets, and other USB-powered devices. Here are some key features you should know about:

- **Battery Capacity:** The capacity is usually measured in milliampere-hours (mAh), indicating how much charge the power bank can hold. Common capacities range from 5,000 mAh to 20,000 mAh.
- **Output Ports:** Most Tech 2 chargers have multiple output ports (USB-A, USB-C) that allow you

to charge multiple devices simultaneously.

- **Input Ports:** This refers to how the charger is recharged. Tech 2 models typically feature micro-USB or USB-C input ports.
- **LED Indicators:** These lights show the battery level, helping you keep track of how much power is left in the charger.
- **Safety Features:** Tech 2 chargers often come with built-in safety features like short circuit protection, overcharge prevention, and temperature control.

How to Charge Your Tech 2 Portable Charger

Charging your Tech 2 portable charger is the first step to ensure it's ready when you need it. Follow these simple steps:

Step 1: Gather Your Materials

You will need:

- Your Tech 2 portable charger
- A compatible charging cable (usually USB to micro-USB or USB-C)
- A wall adapter or a powered USB port (like a computer or laptop)

Step 2: Connect the Charger

1. Plug one end of the charging cable into the input port of the Tech 2 portable charger.

2. Connect the other end of the cable to a wall adapter or a powered USB port.

Step 3: Charging Process

- Once connected, the charger should start to charge automatically.
- Check the LED indicators to monitor the charging status. Typically, a blinking light indicates charging, while a steady light shows that it's fully charged.
- Charging time can vary based on the capacity of the charger and the power source, but it generally takes 4-8 hours to fully recharge.

How to Use the Tech 2 Portable Charger

Using the Tech 2 portable charger to power your devices is straightforward. Follow these steps to ensure a smooth charging experience:

Step 1: Prepare Your Device

Before you connect your device, ensure that it is compatible with USB charging. Most smartphones and tablets will be, but always check the specifications if you're unsure.

Step 2: Connect the Device

1. Take the appropriate charging cable for your device (lightning cable for iPhones, USB-C for newer Android devices, etc.).
2. Plug one end of the cable into your device and the other end into one of the output ports on the Tech 2 portable charger.

Step 3: Start Charging

- Once connected, your device should automatically start charging.
- Monitor the charging progress on your device's screen.
- You can use your device while it's charging; however, it may take longer to charge if you're using it simultaneously.

Step 4: Disconnect After Use

1. Once your device reaches a sufficient charge, unplug the charging cable from both the device and the portable charger.
2. Store the charger in a safe place for your next use.

Maintenance Tips for Your Tech 2 Portable Charger

To ensure that your Tech 2 portable charger remains in good working condition, follow these maintenance tips:

- **Keep It Charged:** Try to recharge your portable charger at least once every three months, even if you don't use it frequently. This helps maintain the battery's health.
- **Avoid Extreme Temperatures:** Do not expose your charger to extreme heat or cold, as this can damage the battery and internal components.
- **Use the Right Cables:** Always use high-quality cables that are compatible with your portable charger and device to prevent damage.

- **Store Properly:** When not in use, store your charger in a cool, dry place. Avoid placing heavy objects on top of it.
- **Regularly Check for Damage:** Inspect your charger for any signs of wear or damage. If you notice any issues, discontinue use and consider replacing it.

Troubleshooting Common Issues

Even the best portable chargers can encounter issues. Here are some common problems and their solutions:

Problem 1: Charger Not Charging

- Ensure that the input cable is correctly connected to both the charger and the power source.
- Check the power source to confirm it is functioning properly. Try a different outlet or USB port.
- Inspect the charging cable for any signs of damage. Replace it if necessary.

Problem 2: Device Not Charging

- Verify that the output cable is securely connected to both the device and the charger.
- Ensure that your device is compatible with the charger.
- If the charger is low on power, recharge it before trying to charge your device.

Problem 3: LED Indicators Not Working

- If the indicators do not light up when the charger is connected, it may indicate a dead battery.

Recharge the charger for several hours.

- If the indicators still do not work after charging, the charger may require servicing or replacement.

Conclusion

In summary, understanding your Tech 2 portable charger and how to use it effectively can significantly enhance your mobile experience. By following the instructions outlined in this article, you can ensure your devices remain charged and ready for use anytime, anywhere. Regular maintenance and being aware of common issues will also help prolong the life of your charger, making it a reliable companion for all your power needs. With these tips and tricks, you'll be well-equipped to navigate the world of portable charging.

Frequently Asked Questions

How do I charge my Tech 2 portable charger for the first time?

To charge your Tech 2 portable charger for the first time, connect it to a USB power source using the included cable. Allow it to charge fully until the LED indicator shows a solid light, which usually takes about 4-6 hours.

What devices can I charge with the Tech 2 portable charger?

The Tech 2 portable charger can charge a variety of devices including smartphones, tablets, and other USB-powered gadgets. Ensure your device's power requirements are compatible with the charger's output specifications.

How can I check the battery level of my Tech 2 portable charger?

To check the battery level, simply press the power button on the Tech 2 portable charger. The LED indicators will light up to indicate the remaining charge: 1 light for low, 2 lights for medium, and 3 lights for high.

Can I use my Tech 2 portable charger while it is charging?

Yes, you can use your Tech 2 portable charger to charge your devices while it is plugged in and charging itself. However, it may take longer to fully charge both the portable charger and your device simultaneously.

What safety features does the Tech 2 portable charger have?

The Tech 2 portable charger includes several safety features such as overcharge protection, short circuit protection, and temperature control to ensure safe operation while charging your devices.

Find other PDF article:

<https://soc.up.edu.ph/25-style/Book?ID=dnU61-1526&title=goodnight-goon-a-petrifying-parody.pdf>

[Tech 2 Portable Charger Instructions](#)

TechPowerUp

Leading tech publication with fast news, thorough reviews and a strong community.

Visual C++ Redistributable Runtimes All-in-One - TechPo...

Jul 10, 2025 · This archive contains the latest version (July 2025) of all VCRedist Visual Studio C++ runtimes, ...

[Sapphire Radeon RX 9070 XT Nitro+ Review - Beating NVIDIA](#)

Mar 5, 2025 · AMD's new RDNA 4 GPUs are launching today. The Sapphire Radeon RX 9070 XT Nitro+ is a fantastic custom design with powerful cooling ...

Top 10 Emerging Technologies of 2025 | World Economic For...

Jun 24, 2025 · The Top 10 Emerging Technologies of 2025 report highlights 10 innovations with the potential to ...

[NVIDIA DLSS DLL 310.3.0 Download | TechPowerUp](#)

Jul 5, 2021 · This download provides various versions of NVIDIA's DLSS DLL for download. In this one file, which ...

TechPowerUp

Leading tech publication with fast news, thorough reviews and a strong community.

Visual C++ Redistributable Runtimes All-in-One - TechPowerUp

Jul 10, 2025 · This archive contains the latest version (July 2025) of all VCRedist Visual Studio C++ runtimes, installable with a single click by running the inclu

Sapphire Radeon RX 9070 XT Nitro+ Review - Beating NVIDIA

Mar 5, 2025 · AMD's new RDNA 4 GPUs are launching today. The Sapphire Radeon RX 9070 XT Nitro+ is a fantastic custom design with powerful cooling and whisper-quiet fans. In terms of ...

Top 10 Emerging Technologies of 2025 | World Economic Forum

Jun 24, 2025 · The Top 10 Emerging Technologies of 2025 report highlights 10 innovations with the potential to reshape industries and societies.

NVIDIA DLSS DLL 310.3.0 Download | TechPowerUp

Jul 5, 2021 · This download provides various versions of NVIDIA's DLSS DLL for download. In this one file, which is bundled with all games that support NVIDIA's

The Future of Jobs Report 2025 | World Economic Forum

Jan 7, 2025 · Learn how global trends like tech innovation and green transition will transform jobs, skills, and workforce strategies in The Future of Jobs Report 2025

These are the Top 10 Emerging Technologies of 2025

Jun 24, 2025 · The World Economic Forum's latest Top 10 Emerging Technologies report explores the tech on the cusp of making a massive impact on our lives.

AMD Radeon RX 570 Specs | TechPowerUp GPU Database

The Radeon RX 570 is a mid-range graphics card by AMD, launched on April 18th, 2017. Built on the 14 nm process, and based on the Polaris 20 graphics processor, in its Polaris 20 XL ...

NVIDIA GeForce RTX 5070 Ti Specs | TechPowerUp GPU Database

The GeForce RTX 5070 Ti is an enthusiast-class graphics card by NVIDIA, launched on February 20th, 2025. Built on the 5 nm process, and based on the GB203 graphics processor, in its ...

CPU-Z 2.16 Download | TechPowerUp

Jul 4, 2025 · CPU-Z is a freeware that gathers information on some of the main devices of your system: Processor name and number, codename, process, package, c

Discover how to use your Tech 2 portable charger with our step-by-step instructions. Stay powered on the go! Learn more for optimal charging tips.

[Back to Home](#)