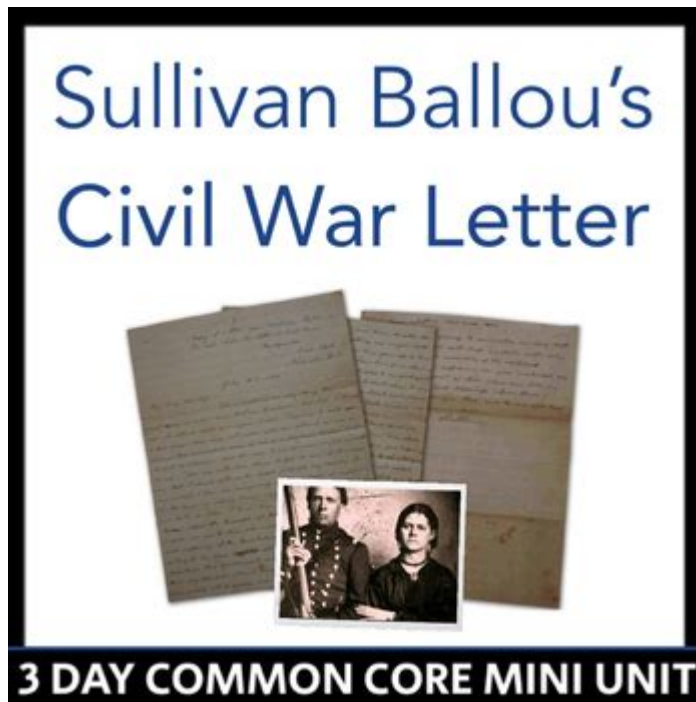


Sullivan Ballou Letter Analysis



SULLIVAN BALLOU LETTER ANALYSIS IS A FASCINATING EXPLORATION OF ONE SOLDIER'S POIGNANT FAREWELL TO HIS WIFE, SARAH, WRITTEN DURING THE AMERICAN CIVIL WAR. THIS LETTER, PENNED BY BALLOU ON JULY 14, 1861, SHORTLY BEFORE HE WAS KILLED AT THE FIRST BATTLE OF BULL RUN, ENCAPSULATES THE EMOTIONS, VALUES, AND HISTORICAL CONTEXT OF ITS TIME. THE LETTER NOT ONLY SERVES AS A PERSONAL TESTAMENT OF LOVE AND DUTY BUT ALSO REFLECTS BROADER THEMES OF SACRIFICE, PATRIOTISM, AND THE HUMAN COST OF WAR. IN THIS ANALYSIS, WE WILL DELVE INTO THE LETTER'S HISTORICAL BACKGROUND, ITS EMOTIONAL DEPTH, AND ITS SIGNIFICANCE IN AMERICAN LITERATURE AND MEMORY.

HISTORICAL CONTEXT

THE CIVIL WAR ERA

THE AMERICAN CIVIL WAR (1861-1865) WAS A PIVOTAL CONFLICT IN U.S. HISTORY, PRIMARILY FOUGHT OVER ISSUES OF SLAVERY AND STATES' RIGHTS. THE WAR CLAIMED OVER 600,000 LIVES AND LEFT DEEP SCARS ON THE NATION. DURING THIS TUMULTUOUS TIME, MANY SOLDIERS WROTE LETTERS TO THEIR LOVED ONES, PROVIDING A GLIMPSE INTO THEIR THOUGHTS, FEARS, AND HOPES. SULLIVAN BALLOU'S LETTER IS ONE OF THE MOST FAMOUS EXAMPLES OF THIS GENRE.

WHO WAS SULLIVAN BALLOU?

SULLIVAN BALLOU WAS BORN ON MARCH 28, 1829, IN SMITHFIELD, RHODE ISLAND. HE WAS A LAWYER AND A MEMBER OF THE RHODE ISLAND HOUSE OF REPRESENTATIVES BEFORE THE WAR. BALLOU ENLISTED IN THE 2ND RHODE ISLAND INFANTRY REGIMENT, WHERE HE QUICKLY ROSE TO THE RANK OF MAJOR. HIS LIFE WAS CUT SHORT WHEN HE WAS KILLED IN BATTLE ON JULY 31, 1861, JUST DAYS AFTER WRITING THE LETTER TO HIS WIFE.

THE CONTENT OF THE LETTER

SULLIVAN BALLOU'S LETTER IS REMARKABLE FOR ITS ELOQUENCE AND EMOTIONAL RESONANCE. IT CAN BE BROKEN DOWN INTO SEVERAL KEY THEMES AND ELEMENTS.

EXPRESSION OF LOVE

AT THE HEART OF THE LETTER IS BALLOU'S PROFOUND LOVE FOR SARAH. HE EXPRESSES THIS LOVE IN A WAY THAT TRANSCENDS MERE AFFECTION, ELEVATING IT TO A LEVEL OF SPIRITUAL CONNECTION. KEY POINTS INCLUDE:

1. EMOTIONAL DEPTH: BALLOU'S OPENING SENTIMENTS ABOUT HIS LOVE FOR SARAH ARE HEARTFELT AND SINCERE, REVEALING A DEEP EMOTIONAL BOND.
2. SACRIFICE: HE ACKNOWLEDGES THE POSSIBILITY OF HIS OWN DEATH AND REASSURES SARAH OF HIS UNWAVERING LOVE, SUGGESTING THAT EVEN IN DEATH, HIS LOVE FOR HER WILL ENDURE.
3. LEGACY OF LOVE: HE EMPHASIZES THAT THEIR LOVE IS A LEGACY THAT WILL CONTINUE TO EXIST, PROVIDING COMFORT TO BOTH SARAH AND HIMSELF.

PATRIOTISM AND DUTY

BALLOU'S LETTER ALSO REFLECTS A STRONG SENSE OF PATRIOTISM AND DUTY TO HIS COUNTRY. HE ARTICULATES THE FOLLOWING POINTS:

1. SENSE OF PURPOSE: HE VIEWS HIS ENLISTMENT AS A NOBLE CAUSE, EXPRESSING PRIDE IN SERVING THE UNION DURING A TIME OF CRISIS.
2. MORAL JUSTIFICATION: BALLOU FRAMES HIS MILITARY SERVICE AS A MORAL OBLIGATION, SUGGESTING THAT FIGHTING FOR THE UNION IS A DUTY THAT TRANSCENDS PERSONAL DESIRES.
3. CONFLICT BETWEEN LOVE AND DUTY: THE LETTER POIGNANTLY CAPTURES THE TENSION BETWEEN HIS LOVE FOR SARAH AND HIS COMMITMENT TO HIS COUNTRY, HIGHLIGHTING THE SACRIFICES MADE BY SOLDIERS AND THEIR FAMILIES.

REFLECTIONS ON MORTALITY

IN THE LETTER, BALLOU GRAPPLES WITH THE REALITY OF DEATH. HIS THOUGHTS ON MORTALITY CAN BE SUMMARIZED AS FOLLOWS:

1. ACCEPTANCE OF FATE: HE EXPRESSES AN UNDERSTANDING THAT HE MAY NOT RETURN FROM THE WAR, DEMONSTRATING A LEVEL OF ACCEPTANCE ABOUT THE RISKS HE FACES.
2. HOPE FOR REUNION: DESPITE ACKNOWLEDGING THE POSSIBILITY OF DEATH, BALLOU MAINTAINS HOPE THAT THEIR SOULS WILL REUNITE IN THE AFTERLIFE, WHICH ADDS A SPIRITUAL DIMENSION TO HIS LETTER.
3. IMPACT OF WAR: THE LETTER SERVES AS A REFLECTION ON THE BROADER HUMAN COST OF WAR, TOUCHING ON THEMES OF GRIEF AND LOSS THAT RESONATE THROUGH HISTORY.

LITERARY ANALYSIS

STYLE AND LANGUAGE

SULLIVAN BALLOU'S LETTER IS NOTABLE FOR ITS LITERARY QUALITIES, WHICH CONTRIBUTE TO ITS LASTING IMPACT. KEY ELEMENTS INCLUDE:

1. **ELOQUENT PROSE:** THE LETTER IS WRITTEN IN A FORMAL, ELOQUENT STYLE THAT WAS COMMON IN THE 19TH CENTURY, CHARACTERIZED BY RICH IMAGERY AND EMOTIONAL DEPTH.
2. **RHETORICAL DEVICES:** BALLOU EMPLOYS VARIOUS RHETORICAL DEVICES, INCLUDING PARALLELISM AND REPETITION, TO EMPHASIZE HIS FEELINGS AND CONVICTIONS.
3. **IMAGERY:** VIVID IMAGERY ENHANCES THE EMOTIONAL WEIGHT OF THE LETTER, ALLOWING READERS TO VISUALIZE THE LOVE AND SACRIFICE HE DESCRIBES.

EMOTIONAL RESONANCE

THE EMOTIONAL RESONANCE OF BALLOU'S LETTER IS PROFOUND AND CONTRIBUTES TO ITS STATUS AS A HISTORICAL ARTIFACT. KEY POINTS OF EMOTIONAL IMPACT INCLUDE:

1. **UNIVERSAL THEMES:** THE THEMES OF LOVE, LOSS, AND SACRIFICE ARE UNIVERSAL, ALLOWING READERS FROM DIFFERENT ERAS TO CONNECT WITH BALLOU'S SENTIMENTS.
2. **PERSONAL AND PUBLIC:** THE LETTER SERVES AS BOTH A PERSONAL FAREWELL AND A PUBLIC DECLARATION OF THE SOLDIER'S COMMITMENT TO HIS COUNTRY, BRIDGING THE GAP BETWEEN PERSONAL EMOTION AND COLLECTIVE EXPERIENCE.
3. **TIMELESSNESS:** THE TIMELESS QUALITY OF BALLOU'S WORDS CONTINUES TO EVOKE EMPATHY AND REFLECTION, MAKING THE LETTER RELEVANT TO CONTEMPORARY AUDIENCES.

SIGNIFICANCE AND LEGACY

CULTURAL IMPACT

SULLIVAN BALLOU'S LETTER HAS BECOME AN ENDURING SYMBOL OF THE SACRIFICES MADE DURING THE CIVIL WAR. ITS CULTURAL IMPACT CAN BE OBSERVED IN SEVERAL WAYS:

1. **HISTORICAL DOCUMENTATION:** THE LETTER SERVES AS A PRIMARY SOURCE FOR HISTORIANS STUDYING THE CIVIL WAR, PROVIDING INSIGHT INTO THE MINDSET OF SOLDIERS AND THEIR FAMILIES.
2. **LITERARY INFLUENCE:** IT HAS INSPIRED COUNTLESS WORKS OF LITERATURE AND ART, UNDERSCORING THE EMOTIONAL TOLL OF WAR AND THE POWER OF LOVE.
3. **MEMORIALIZATION:** BALLOU'S LETTER IS OFTEN CITED IN MEMORIALS AND COMMEMORATIONS OF THE CIVIL WAR, REMINDING FUTURE GENERATIONS OF THE HUMAN COST OF CONFLICT.

MODERN RELEVANCE

EVEN IN CONTEMPORARY SOCIETY, THE THEMES FOUND IN BALLOU'S LETTER RESONATE STRONGLY. CONSIDER THE FOLLOWING:

1. **ONGOING CONFLICTS:** THE SACRIFICES OF MILITARY PERSONNEL AND THEIR FAMILIES CONTINUE TO BE RELEVANT TODAY, AS MODERN CONFLICTS ECHO THE SENTIMENTS EXPRESSED BY BALLOU.
2. **HUMAN CONNECTION:** THE UNIVERSAL THEMES OF LOVE AND SACRIFICE REMIND US OF THE IMPORTANCE OF EMPATHY AND UNDERSTANDING ACROSS DIFFERENT CONTEXTS AND CULTURES.
3. **COGNITIVE REFLECTION:** THE LETTER ENCOURAGES READERS TO REFLECT ON THEIR VALUES AND PRIORITIES, PARTICULARLY IN RELATION TO LOVE, DUTY, AND THE CHOICES WE MAKE IN LIFE.

CONCLUSION

IN CONCLUSION, THE SULLIVAN BALLOU LETTER ANALYSIS REVEALS A RICH TAPESTRY OF EMOTIONS, THEMES, AND HISTORICAL SIGNIFICANCE. BALLOU'S HEARTFELT FAREWELL TO HIS WIFE ENCAPSULATES THE DUALITY OF LOVE AND DUTY, OFFERING A

POIGNANT REFLECTION ON THE HUMAN EXPERIENCE DURING ONE OF AMERICA'S MOST CHALLENGING PERIODS. AS A HISTORICAL DOCUMENT, THE LETTER PROVIDES INVALUABLE INSIGHT INTO THE MINDSET OF CIVIL WAR SOLDIERS AND THEIR FAMILIES, WHILE ITS LITERARY QUALITIES ENSURE ITS PLACE IN THE ANNALS OF AMERICAN LITERATURE. THE ENDURING LEGACY OF SULLIVAN BALLOU'S LETTER SERVES AS A POWERFUL REMINDER OF THE SACRIFICES MADE IN THE NAME OF LOVE AND COUNTRY, RESONATING WITH READERS ACROSS GENERATIONS.

FREQUENTLY ASKED QUESTIONS

WHAT IS THE HISTORICAL SIGNIFICANCE OF SULLIVAN BALLOU'S LETTER?

SULLIVAN BALLOU'S LETTER, WRITTEN TO HIS WIFE SARAH JUST BEFORE HE WENT TO FIGHT IN THE CIVIL WAR, IS SIGNIFICANT AS IT ENCAPSULATES THE EMOTIONS OF SOLDIERS DURING THAT ERA. IT HIGHLIGHTS THEMES OF LOVE, SACRIFICE, AND DUTY, PROVIDING INSIGHTS INTO THE PERSONAL STRUGGLES FACED BY THOSE WHO FOUGHT IN THE WAR.

WHAT LITERARY DEVICES ARE PROMINENT IN SULLIVAN BALLOU'S LETTER?

THE LETTER EMPLOYS VARIOUS LITERARY DEVICES, INCLUDING IMAGERY, EMOTIONAL DICTION, AND RHETORICAL QUESTIONS. BALLOU'S USE OF VIVID IMAGERY EVOKES STRONG EMOTIONS, WHILE HIS HEARTFELT LANGUAGE CONVEYS THE DEPTH OF HIS LOVE AND THE GRAVITY OF HIS SITUATION.

HOW DOES SULLIVAN BALLOU'S LETTER REFLECT THE VALUES OF THE 19TH CENTURY?

THE LETTER REFLECTS 19TH-CENTURY VALUES SUCH AS HONOR, PATRIOTISM, AND THE IMPORTANCE OF FAMILY. BALLOU EXPRESSES HIS COMMITMENT TO HIS COUNTRY WHILE SIMULTANEOUSLY PRIORITIZING HIS LOVE FOR HIS WIFE, ILLUSTRATING THE ERA'S COMPLEX INTERPLAY BETWEEN PERSONAL AND NATIONAL DUTY.

WHAT IMPACT DID SULLIVAN BALLOU'S LETTER HAVE ON AMERICAN CULTURE?

SULLIVAN BALLOU'S LETTER HAS BECOME AN ENDURING SYMBOL OF THE SACRIFICES MADE BY SOLDIERS AND THEIR FAMILIES. IT HAS BEEN REFERENCED IN LITERATURE, FILM, AND SPEECHES, CONTRIBUTING TO THE COLLECTIVE MEMORY OF THE CIVIL WAR AND THE EMOTIONAL COST OF CONFLICT.

IN WHAT WAYS CAN SULLIVAN BALLOU'S LETTER BE ANALYZED FOR ITS EMOTIONAL DEPTH?

THE EMOTIONAL DEPTH OF SULLIVAN BALLOU'S LETTER CAN BE ANALYZED THROUGH ITS POIGNANT EXPRESSIONS OF LOVE AND LONGING, AS WELL AS ITS CONTEMPLATION OF MORTALITY. THE JUXTAPOSITION OF HIS DUTY AS A SOLDIER AGAINST HIS YEARNING FOR HIS WIFE CREATES A POWERFUL NARRATIVE THAT RESONATES WITH READERS ON A PERSONAL LEVEL.

Find other PDF article:

<https://soc.up.edu.ph/24-mark/files?trackid=oOw39-9319&title=garrison-programmable-7-day-thermostat-user-manual.pdf>

Sullivan Ballou Letter Analysis

STERN Definition & Meaning - Merriam-Webster

severe, stern, austere, ascetic mean given to or marked by strict discipline and firm restraint. severe implies standards enforced without indulgence or laxity and may suggest harshness. ...

[Nachrichten, Hintergründe & Reportagen | STERN.de](#)

Auf STERN.DE finden Sie News, spannende Hintergründe sowie bildstarke Reportagen aus allen Bereichen: Von Politik und Wirtschaft bis Kultur und Wissenschaft.

STERN | English meaning - Cambridge Dictionary

STERN definition: 1. severe, or showing disapproval: 2. If something, such as a job, is stern, it is difficult: 3.... Learn more.

[Stern - definition of stern by The Free Dictionary](#)

1. firm, strict, or uncompromising: stern discipline. 2. hard, harsh, or severe. 3. rigorous or austere; of an unpleasantly serious character: stern times. 4. grim or forbidding in aspect: a ...

[STERN definition and meaning | Collins English Dictionary](#)

Someone who is stern is very serious and strict. Her father was stern and hard to please.

Stern - Definition, Meaning & Synonyms | Vocabulary.com

The best word for that look is stern, meaning "strict" or "severe." Stern, strict, severe, harsh, unforgiving — they all more or less mean the same thing, which is very tough and exacting, ...

stern adjective - Definition, pictures, pronunciation and usage ...

Definition of stern adjective in Oxford Advanced Learner's Dictionary. Meaning, pronunciation, picture, example sentences, grammar, usage notes, synonyms and more.

What does STERN mean? - Definitions.net

What does STERN mean? This dictionary definitions page includes all the possible meanings, example usage and translations of the word STERN. "he deserves a good kick in the butt"; ...

stern - Wiktionary, the free dictionary

Jun 20, 2025 · stern (third-person singular simple present sterns, present participle sterning, simple past and past participle sterned) (obsolete, ambitransitive) To steer, to direct the course ...

[STERN Definition & Meaning | Dictionary.com](#)

Stern, severe, harsh agree in referring to methods, aspects, manners, or facial expressions. Stern implies uncompromising, inflexible firmness, and sometimes a hard, forbidding, or withdrawn ...

Is "CRA My Account" the same as "My Service Canada Account"?

Oct 29, 2019 · Is "CRA My Account" the same as "My Service Canada Account"? Canada Revenue Agency (CRA) MyAccount provides tax information. My Service Canada Account (MSCA) deals with EI, CPP, OAS and other government services & benefits.

Cannot login to my CRA account, captcha selection incorrect error

Mar 18, 2024 · I tried to login to my CRA account today and it now asks for captcha selection. I clicked on the object that doesn't fit with the others for

How to setup a new cra account if i never filed taxes before? The ...

Mar 16, 2024 · TurboTax Support Discussions Navigating TurboTax How to setup a new cra account if i never filed taxes before? The cra website asks for a tax line amount for 15000. I'm not sure how to proceed

How do I register for the CRA's My Account service?

There are multiple ways to register for the My Account service. To see the options, go to My Account

for Individuals on the Canadian government's website.

How do I resolve cra result code 21 so they will accept my

Apr 30, 2022 · Code 21 - I have the 8 digit number from my 2021 return but don't know where it is supposed to be entered on the this tax return

I do not have a CRA account and will be filing my 2023 tax

Feb 11, 2024 · Yes. If this is your first time filing a return then you can create a CRA My Account after you have gotten your Notice of Assessment. The Notice of Assessment is sent to you by the Canada Revenue Agency (CRA). If you don't have a CRA My Account you will get it ...

CRA login Error - RedFlagDeals.com Forums

Apr 4, 2022 · Anyone else experince any CRA login issue? I am having a strange issue logging to CRA account on MS Edge and Chrome. When my profile is syncing and I

CRA Account Login - Can't Receive SMS Message

Jun 7, 2023 · CRA Account Login - Can't Receive SMS Message Dear Personal Finance Experts, For visiting CRA account, it seems I can't receive SMS message so instead I need to use the call option that the automatic service calls me and provides me ...

CRA Result Code: 15

Mar 31, 2025 · The CRA has locked your account due to too many failed attempts to Netfile (5xTimes maximum). You should contact the CRA to unlock the account. Thanks for choosing TurboTax.

CRA My Account - did they remove the ability to seamlessly login ...

Apr 8, 2024 · CRA My Account - did they remove the ability to seamlessly login to My Service Canada account? I swear, last year and before, I was able to seamlessly transfer to my My Service Canada account directly from the My CRA Account portil.

Explore our in-depth Sullivan Ballou letter analysis

[Back to Home](#)