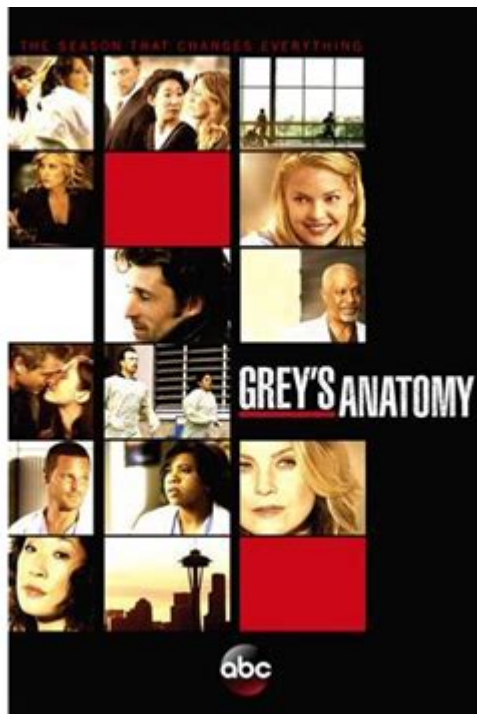


Suicide Is Painless Greys Anatomy



Suicide is painless is a powerful phrase that evokes a range of emotions and thoughts, particularly in the context of the television series Grey's Anatomy. This long-running medical drama has not only captivated audiences with its intricate storylines and complex characters but has also tackled some of the most pressing issues surrounding mental health, including the topic of suicide. The show has often served as a mirror reflecting societal issues, and its approach to sensitive subjects like suicide has sparked discussions and raised awareness. In this article, we will explore the significance of the phrase "suicide is painless" within the context of Grey's Anatomy, examine key episodes and characters related to this theme, and discuss the show's impact on viewers' perceptions of mental health and suicide.

Understanding the Context of Suicide in Grey's Anatomy

Grey's Anatomy has been known for its willingness to address difficult topics, including love, loss, and the fragility of life. The phrase "suicide is painless" resonates throughout the series, especially as it relates to the struggles faced by the characters. The show has featured storylines that delve into mental health issues, the impact of trauma, and the consequences of untreated psychological distress.

The Impact of Trauma on Characters

Several characters within Grey's Anatomy have faced traumatic experiences that have impacted their

mental health. These story arcs serve to highlight the reality that mental health issues can arise from various life events, leading some individuals to contemplate suicide. Key characters who have battled their demons include:

1. Dr. Lexie Grey - Lexie's character provides insight into the effects of family dynamics and personal loss on mental health. The pressure to succeed in a demanding environment often exacerbated her struggles.
2. Dr. Miranda Bailey - Miranda's character arc showcases the toll that high-stress medical scenarios can have on a person. Her journey through burnout and the pressure of leadership illustrates the importance of seeking help.
3. Dr. Derek Shepherd - Derek represents the struggles faced by those in high-stakes professions. His experiences with grief and loss significantly affect his mental health and relationships throughout the series.

These characters embody the complexities of mental health, illustrating that even those who appear strong and successful can struggle with feelings of hopelessness.

Key Episodes Addressing Suicide

Grey's Anatomy has featured several pivotal episodes that center on suicide, each exploring the theme with sensitivity and depth. Here are some notable episodes:

1. "How to Save a Life" (Season 11, Episode 21)

This episode is particularly impactful as it revolves around the suicide of Dr. Derek Shepherd. The emotional fallout from his death is felt throughout the hospital and among the characters. The episode explores the grief experienced by his colleagues and the ripple effect his loss has on their lives.

- Key Themes:
- The unpredictability of life and death.
- Grief and its manifestation in different characters.
- The need for support and understanding in times of crisis.

2. "Breathe" (Season 15, Episode 20)

In this episode, the show addresses the theme of mental health head-on. Dr. Alex Karev's struggles with depression lead him to consider the unthinkable. The episode serves as a critical reminder of the importance of mental health awareness and the need for open conversations about suicide.

- Key Themes:
- The stigma surrounding mental health.
- The importance of seeking help.

- The role of friends and family in supporting those in crisis.

3. "The Sound of Silence" (Season 10, Episode 17)

This episode showcases the aftermath of a traumatic event and the psychological scars it leaves behind. It emphasizes the need for understanding and compassion when dealing with individuals facing mental health challenges.

- Key Themes:
- The impact of trauma on mental health.
- The importance of communication in healing.
- The need for empathy in the medical profession.

The Symbolism of "Suicide is Painless" in the Series

The phrase "suicide is painless" carries symbolic weight within Grey's Anatomy. It serves as a haunting reminder of the often invisible struggles individuals face and the societal misconceptions surrounding suicide. The show utilizes this phrase to challenge viewers to confront their perceptions of mental health and the stigma associated with seeking help.

Challenging Misconceptions

Grey's Anatomy uses its platform to educate viewers about the realities of mental health issues, including:

- The Complexity of Mental Illness: The show illustrates that mental health struggles are not always visible and can affect anyone, regardless of their outward appearance or success.
- The Importance of Communication: Throughout various episodes, characters are encouraged to speak openly about their feelings, highlighting the importance of dialogue in preventing crises.
- The Power of Support Systems: The series emphasizes the role of friendships, family, and community in providing the necessary support for those dealing with mental health issues.

The Impact on Viewers

Grey's Anatomy has had a significant impact on its audience, particularly in how it addresses mental health and suicide. By incorporating these themes into its storytelling, the series has:

- Increased Awareness: The portrayal of mental health struggles has helped raise awareness about these issues and encouraged viewers to seek help.
- Encouraged Open Dialogue: Many fans have reported that the show has prompted conversations

about mental health, suicide, and the importance of supporting one another.

- **Reduced Stigma:** By presenting characters who face these challenges, Grey's Anatomy has contributed to reducing the stigma surrounding mental health, making it easier for individuals to discuss their experiences.

Conclusion

In conclusion, 'Suicide is Painless' is a phrase laden with meaning in the context of Grey's Anatomy. The show has tackled the sensitive subject of suicide with care, using its platform to shed light on the complexities of mental health. Through the experiences of its characters, Grey's Anatomy encourages viewers to confront the realities of mental illness and the importance of seeking help. The series not only entertains but also educates, fostering a greater understanding of the challenges many face in silence. As we continue to engage with media that addresses these critical issues, it is vital to remember the lessons learned from Grey's Anatomy and work towards a society that prioritizes mental health and well-being.

Frequently Asked Questions

What is the significance of the song 'Suicide is Painless' in Grey's Anatomy?

The song 'Suicide is Painless' is used in Grey's Anatomy to explore themes of loss, mental health, and the struggles faced by the characters, particularly in relation to the challenges of being in the medical field.

Which character's storyline is closely associated with 'Suicide is Painless' in Grey's Anatomy?

The song is notably tied to the character of Dr. Derek Shepherd, as it reflects his experiences with trauma and the impact of his profession on his mental well-being.

How does Grey's Anatomy address the topic of suicide through its characters?

Grey's Anatomy addresses the topic of suicide by depicting the emotional struggles of its characters, showcasing their vulnerabilities, and highlighting the importance of seeking help and support.

In which season of Grey's Anatomy is 'Suicide is Painless' prominently featured?

The song is prominently featured in Season 2, particularly during the emotional aftermath of a significant event that deeply affects the characters.

What message does Grey's Anatomy convey about mental health through the use of 'Suicide is Painless'?

The show conveys that mental health is a crucial issue that should be openly discussed, and it emphasizes the importance of recognizing signs of distress and encouraging conversations around seeking help.

How do fans generally react to the use of 'Suicide is Painless' in Grey's Anatomy?

Fans often react with a mix of sadness and appreciation, recognizing the poignant way the show handles difficult topics and the emotional depth the song brings to the narrative.

Does Grey's Anatomy offer any resources for viewers struggling with mental health issues?

Yes, Grey's Anatomy often includes messages and resources at the end of episodes, directing viewers to hotlines and support services for mental health assistance.

What role does music play in conveying the emotional weight of 'Suicide is Painless' in Grey's Anatomy?

Music in Grey's Anatomy plays a vital role in enhancing emotional storytelling, with 'Suicide is Painless' serving as a haunting backdrop that underscores the gravity of the characters' struggles and the series' overarching themes.

Find other PDF article:

<https://soc.up.edu.ph/19-theme/files?ID=1Y197-9957&title=easy-to-draw-anime-character.pdf>

Suicide Is Painless Greys Anatomy

Suicide - World Health Organization (WHO)

Sep 12, 2023 · Suicide prevention efforts require coordination and collaboration among multiple sectors, including health, education, labour, agriculture, business, justice, law, defence, politics ...

Suicide - World Health Organization (WHO)

Sep 18, 2024 · Suicide is a global public health problem. Every year more than 720 000 people die as a result of suicide. The majority of these deaths (73%) occur in low- and middle-income ...

Suicide - World Health Organization (WHO)

Aug 29, 2024 · Chaque année, près de 703 000 personnes se suicident et beaucoup d'autres font une tentative de suicide. Chaque suicide est une tragédie qui touche les familles, les ...

Suicide - World Health Organization (WHO)

Suicide Forum - Live Chat & Online Support For Suicidal Feelings

Suicide Forum is a free peer support forum and live chat room - if you feel like you need someone to talk to about suicidal feelings, come and join us.

Suicide worldwide in 2021: global health estimates

May 23, 2025 · An estimated 727 000 persons died by suicide in 2021. Suicide was the third leading cause of death among 15-29-year-olds; second for females, third for males. More than ...

One in 100 deaths is by suicide - World Health Organization (WHO)

Jun 17, 2021 · Suicide remains one of the leading causes of death worldwide, according to WHO's latest estimates, published today in "Suicide worldwide in 2019". Every year, more ...

Suicide - World Health Organization (WHO)

May 23, 2025 · Suicide is a major public health issue across a wide range of settings from highly developed to small Pacific island countries and areas. Suicide rates in some countries in the ...

Explore the powerful themes of "Suicide is Painless" in Grey's Anatomy. Discover how this iconic episode tackles mental health and its impact. Learn more!

[Back to Home](#)