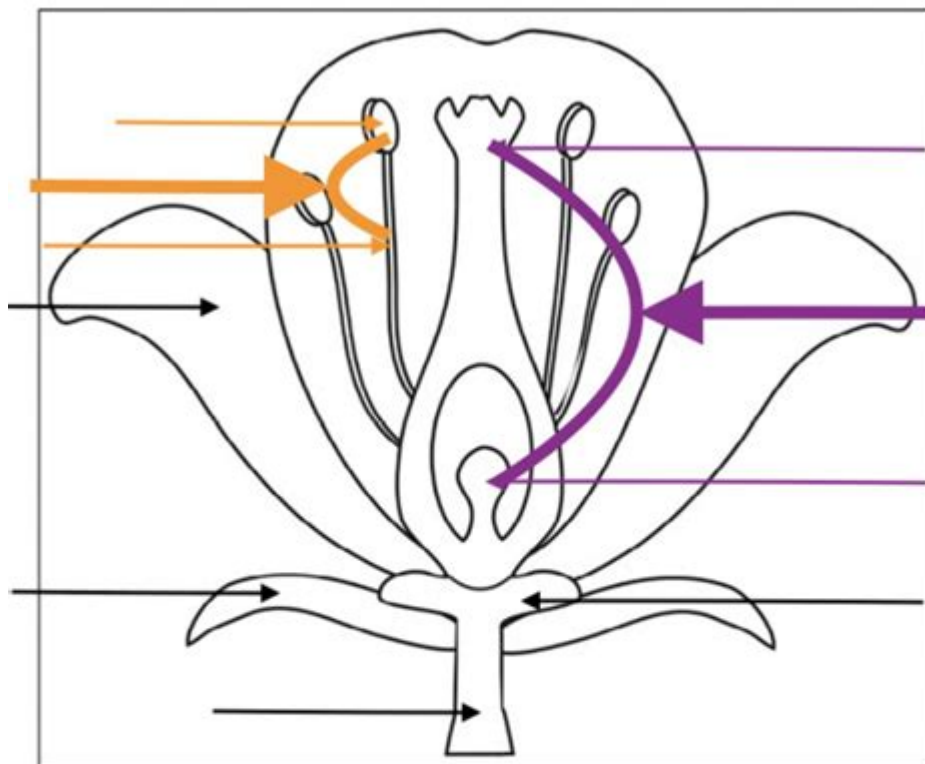


Structure Of A Flower Worksheet



anther
filament
ovary
petals
pistil

Label the following parts of a flower.

- ☐ - Anther – Makes the pollen
- ☐ - Filament – Holds up the anther
- ☐ - Petals – Attract pollinators with their bright colors
- ☐ - Sepal – Is the outer cover of the flower bud
- ☐ - Pistil – Is the sticky center of the flower that collects pollen and grows seeds
- ☐ - Stamen – Consists of the anther and filament

receptacle
sepal
stigma
stalk
stamen

STRUCTURE OF A FLOWER WORKSHEET IS AN EDUCATIONAL TOOL THAT CAN GREATLY ENHANCE STUDENTS' UNDERSTANDING OF THE ANATOMY AND FUNCTION OF FLOWERS. FLOWERS ARE NOT ONLY CRITICAL TO THE REPRODUCTION OF FLOWERING PLANTS BUT ALSO PLAY A VITAL ROLE IN ECOSYSTEMS AND HUMAN ACTIVITIES, SUCH AS AGRICULTURE AND HORTICULTURE. THIS ARTICLE WILL EXPLORE THE COMPONENTS OF A FLOWER, THE IMPORTANCE OF EACH PART, AND HOW A WORKSHEET CAN BE STRUCTURED TO FACILITATE LEARNING.

UNDERSTANDING FLOWER ANATOMY

FLOWERS ARE COMPLEX STRUCTURES COMPOSED OF VARIOUS PARTS, EACH WITH SPECIFIC FUNCTIONS THAT CONTRIBUTE TO THE REPRODUCTIVE PROCESS. THE MAIN COMPONENTS OF A FLOWER INCLUDE:

- PETALS
- SEPALS
- STAMENS

- CARPELS (PISTILS)
- RECEPTACLE
- OVULE
- FILAMENT
- STYLE

EACH PART OF THE FLOWER PLAYS A SIGNIFICANT ROLE IN ITS OVERALL FUNCTION, PARTICULARLY IN ATTRACTING POLLINATORS AND FACILITATING REPRODUCTION.

DETAILED BREAKDOWN OF FLOWER PARTS

TO EFFECTIVELY DESIGN A STRUCTURE OF A FLOWER WORKSHEET, IT'S ESSENTIAL TO PROVIDE DETAILED INFORMATION ABOUT EACH FLOWER PART. THIS CAN INCLUDE DEFINITIONS, FUNCTIONS, AND EXAMPLES.

1. PETALS:

- BRIGHTLY COLORED AND OFTEN FRAGRANT, PETALS ATTRACT POLLINATORS SUCH AS BEES, BUTTERFLIES, AND BIRDS.
- THEY CAN VARY IN SHAPE, SIZE, AND COLOR DEPENDING ON THE SPECIES.

2. SEPALS:

- GREEN LEAF-LIKE STRUCTURES THAT PROTECT THE FLOWER BUD BEFORE IT BLOOMS.
- THEY SUPPORT THE PETALS AND CAN SOMETIMES BE MISTAKEN FOR THEM.

3. STAMENS:

- THE MALE REPRODUCTIVE PART OF THE FLOWER, CONSISTING OF THE ANTHER AND FILAMENT.
- THE ANTHER PRODUCES POLLEN, WHILE THE FILAMENT SUPPORTS THE ANTHER.

4. CARPELS (PISTILS):

- THE FEMALE REPRODUCTIVE PART OF THE FLOWER, WHICH INCLUDES THE OVARY, STYLE, AND STIGMA.
- THE OVARY CONTAINS OVULES, WHICH DEVELOP INTO SEEDS AFTER FERTILIZATION.
- THE STIGMA IS THE STICKY PART THAT CAPTURES POLLEN.

5. RECEPTACLE:

- THE THICKENED PART OF THE STEM THAT SUPPORTS THE FLOWER.
- IT CONNECTS THE FLOWER TO THE REST OF THE PLANT.

6. OVULE:

- LOCATED WITHIN THE OVARY, OVULES ARE THE STRUCTURES THAT DEVELOP INTO SEEDS AFTER FERTILIZATION.

7. FILAMENT:

- THE SLENDER STALK OF THE STAMEN THAT SUPPORTS THE ANTHER.

8. STYLE:

- THE LONG, SLENDER PART OF THE CARPEL, CONNECTING THE STIGMA AND THE OVARY.
- IT PLAYS A CRUCIAL ROLE IN THE FERTILIZATION PROCESS.

IMPORTANCE OF EACH FLOWER PART

UNDERSTANDING THE IMPORTANCE OF EACH FLOWER PART IS CRUCIAL FOR STUDENTS AS THEY LEARN ABOUT PLANT BIOLOGY AND REPRODUCTION. HERE'S HOW EACH COMPONENT CONTRIBUTES TO THE PLANT'S LIFE CYCLE:

POLLINATION AND REPRODUCTION

- PETALS: THEIR BRIGHT COLORS AND FRAGRANCES ATTRACT POLLINATORS, ENSURING THE TRANSFER OF POLLEN FROM ONE FLOWER TO ANOTHER.
- STAMENS: THEY PRODUCE POLLEN, WHICH IS NECESSARY FOR FERTILIZING OVULES IN THE OVARY.
- CARPELS: THE PISTILS ARE ESSENTIAL FOR RECEIVING THE POLLEN AND HOUSING THE OVULES THAT DEVELOP INTO SEEDS AFTER FERTILIZATION.

PROTECTION AND SUPPORT

- SEPALs: THEY PROTECT THE DEVELOPING FLOWER AND ITS REPRODUCTIVE ORGANS.
- RECEPTACLE: IT PROVIDES STRUCTURAL SUPPORT TO THE FLOWER, ENSURING THAT IT CAN EFFECTIVELY ATTRACT POLLINATORS AND FACILITATE REPRODUCTION.

SEED DEVELOPMENT

- OVULES: AFTER FERTILIZATION, THEY DEVELOP INTO SEEDS, WHICH ARE VITAL FOR THE PROPAGATION OF THE PLANT SPECIES.

CREATING A STRUCTURE OF A FLOWER WORKSHEET

A WELL-DESIGNED WORKSHEET CAN HELP STUDENTS VISUALIZE AND UNDERSTAND THE ANATOMY OF A FLOWER. HERE ARE SOME TIPS FOR STRUCTURING A WORKSHEET EFFECTIVELY.

1. TITLE AND OBJECTIVE

BEGIN WITH A CLEAR TITLE SUCH AS "STRUCTURE OF A FLOWER WORKSHEET" AND INCLUDE AN OBJECTIVE STATEMENT TO GUIDE STUDENTS ON WHAT THEY WILL LEARN.

EXAMPLE OBJECTIVE: "STUDENTS WILL IDENTIFY AND DESCRIBE THE PARTS OF A FLOWER AND THEIR FUNCTIONS IN PLANT REPRODUCTION."

2. DIAGRAM OF A FLOWER

INCLUDE A LABELED DIAGRAM OF A FLOWER, HIGHLIGHTING EACH PART. STUDENTS CAN EITHER FILL IN THE LABELS OR COLOR THE DIFFERENT PARTS TO REINFORCE LEARNING VISUALLY.

3. DESCRIPTION SECTION

PROVIDE A SECTION FOR STUDENTS TO WRITE DESCRIPTIONS OF EACH FLOWER PART. THIS CAN BE A FILL-IN-THE-BLANK FORMAT OR A SHORT ANSWER SECTION WHERE THEY EXPLAIN THE FUNCTION OF EACH PART.

4. MATCHING ACTIVITY

CREATE A MATCHING ACTIVITY WHERE STUDENTS MATCH FLOWER PARTS WITH THEIR RESPECTIVE FUNCTIONS. THIS ACTIVE ENGAGEMENT HELPS ENHANCE RETENTION AND UNDERSTANDING.

EXAMPLE:

- MATCH THE FOLLOWING:

- A. PETAL
- B. STAMEN
- C. OVULE
- D. SEPAL

WITH:

1. PROTECTS THE FLOWER BUD
2. ATTRACTS POLLINATORS
3. DEVELOPS INTO SEEDS
4. PRODUCES POLLEN

5. QUIZ SECTION

CONCLUDE THE WORKSHEET WITH A SHORT QUIZ TO ASSESS UNDERSTANDING. QUESTIONS CAN RANGE FROM MULTIPLE CHOICE TO TRUE/FALSE.

EXAMPLE QUESTIONS:

- WHAT PART OF THE FLOWER IS RESPONSIBLE FOR MAKING POLLEN?

- TRUE OR FALSE: SEPALS ARE USUALLY BRIGHTLY COLORED AND ATTRACT POLLINATORS.

CONCLUSION

A **STRUCTURE OF A FLOWER WORKSHEET** SERVES AS AN EFFECTIVE EDUCATIONAL TOOL THAT CAN ENHANCE STUDENTS' UNDERSTANDING OF PLANT BIOLOGY. BY EXPLORING THE ANATOMY AND FUNCTIONS OF FLOWER PARTS, STUDENTS GAIN A DEEPER APPRECIATION FOR THE COMPLEXITIES OF NATURE AND THE IMPORTANCE OF FLOWERS IN ECOSYSTEMS AND AGRICULTURE. THROUGH INTERACTIVE ACTIVITIES, DIAGRAMS, AND ASSESSMENTS, EDUCATORS CAN FOSTER A RICH LEARNING EXPERIENCE THAT NOT ONLY INFORMS BUT ALSO ENGAGES STUDENTS IN THE FASCINATING WORLD OF BOTANY.

FREQUENTLY ASKED QUESTIONS

WHAT ARE THE MAIN PARTS OF A FLOWER THAT SHOULD BE INCLUDED IN A STRUCTURE OF A FLOWER WORKSHEET?

THE MAIN PARTS INCLUDE THE PETALS, SEPALS, STAMENS (ANTHERS AND FILAMENTS), AND CARPELS (OVARY, STYLE, AND STIGMA).

HOW CAN A STRUCTURE OF A FLOWER WORKSHEET HELP STUDENTS UNDERSTAND PLANT BIOLOGY?

IT PROVIDES A VISUAL REPRESENTATION AND LABELS THE PARTS OF A FLOWER, ENHANCING COMPREHENSION OF THEIR FUNCTIONS AND ROLES IN REPRODUCTION.

WHAT EDUCATIONAL LEVEL IS APPROPRIATE FOR USING A STRUCTURE OF A FLOWER WORKSHEET?

THIS WORKSHEET IS SUITABLE FOR ELEMENTARY TO MIDDLE SCHOOL STUDENTS, PARTICULARLY IN SCIENCE CLASSES FOCUSING ON BOTANY.

WHAT ACTIVITIES CAN BE INCLUDED IN A STRUCTURE OF A FLOWER WORKSHEET?

ACTIVITIES MAY INCLUDE LABELING DIAGRAMS, COLORING DIFFERENT PARTS, MATCHING FUNCTIONS WITH PARTS, AND ANSWERING QUESTIONS ABOUT POLLINATION.

WHAT IS THE SIGNIFICANCE OF THE STIGMA IN THE STRUCTURE OF A FLOWER?

THE STIGMA IS THE PART OF THE CARPEL THAT RECEIVES POLLEN, PLAYING A CRITICAL ROLE IN THE FERTILIZATION PROCESS.

CAN A STRUCTURE OF A FLOWER WORKSHEET INCORPORATE REAL-LIFE EXAMPLES?

YES, IT CAN INCLUDE EXAMPLES OF DIFFERENT FLOWER SPECIES TO ILLUSTRATE VARIATIONS IN STRUCTURE AND FUNCTION.

HOW CAN TECHNOLOGY ENHANCE THE EXPERIENCE OF USING A STRUCTURE OF A FLOWER WORKSHEET?

TECHNOLOGY CAN PROVIDE INTERACTIVE DIAGRAMS OR VIRTUAL SIMULATIONS WHERE STUDENTS CAN EXPLORE FLOWER STRUCTURES IN 3D.

WHAT IS THE ROLE OF STAMENS IN THE STRUCTURE OF A FLOWER?

STAMENS ARE THE MALE REPRODUCTIVE PARTS OF THE FLOWER, PRODUCING POLLEN NECESSARY FOR FERTILIZATION.

HOW CAN TEACHERS ASSESS UNDERSTANDING USING A STRUCTURE OF A FLOWER WORKSHEET?

TEACHERS CAN EVALUATE STUDENTS' ABILITY TO CORRECTLY LABEL PARTS, EXPLAIN FUNCTIONS, AND APPLY KNOWLEDGE IN QUIZZES OR DISCUSSIONS.

WHAT IS A COMMON MISCONCEPTION ABOUT FLOWER STRUCTURES THAT A WORKSHEET CAN CLARIFY?

A COMMON MISCONCEPTION IS THAT PETALS ARE SOLELY FOR BEAUTY; IN REALITY, THEY ALSO ATTRACT POLLINATORS AND PLAY A VITAL ROLE IN REPRODUCTION.

Find other PDF article:

<https://soc.up.edu.ph/11-plot/pdf?dataid=DV13-8254&title=careers-for-a-psychology-major.pdf>

Structure Of A Flower Worksheet

Structube | Modern furniture, accessories, home decor

Structube offers the best selection of modern furniture at unbeatable prices in Canada. Shop beautiful styles at ...

STRUCTURE Definition & Meaning - Merriam-Webster

The meaning of STRUCTURE is the action of building : construction. How to use structure in a sentence.

STRUCTURE | English meaning - Cambridge Dictionary

STRUCTURE definition: 1. the way in which the parts of a system or object are arranged or organized, or a ...

Structure - Wikipedia

Types of structure include a hierarchy (a cascade of one-to-many relationships), a network featuring ...

STRUCTURE Definition & Meaning | Dictionary.com

Structure definition: mode of building, construction, or organization; arrangement of parts, elements, or ...

Structube | Modern furniture, accessories, home decor

Structube offers the best selection of modern furniture at unbeatable prices in Canada. Shop beautiful styles at low prices for the whole house!

STRUCTURE Definition & Meaning - Merriam-Webster

The meaning of STRUCTURE is the action of building : construction. How to use structure in a

sentence.

STRUCTURE | English meaning - Cambridge Dictionary

STRUCTURE definition: 1. the way in which the parts of a system or object are arranged or organized, or a system arranged.... Learn more.

Structure - Wikipedia

Types of structure include a hierarchy (a cascade of one-to-many relationships), a network featuring many-to-many links, or a lattice featuring connections between components that are ...

STRUCTURE Definition & Meaning | Dictionary.com

Structure definition: mode of building, construction, or organization; arrangement of parts, elements, or constituents.. See examples of STRUCTURE used in a sentence.

Structure - Definition, Meaning & Synonyms | Vocabulary.com

A structure is something of many parts that is put together. A structure can be a skyscraper, an outhouse, your body, or a sentence. Structure is from the Latin word structura which means "a ...

Structure - definition of structure by The Free Dictionary

1. the manner in which something is constructed. 2. the manner in which the elements of anything are organized or interrelated: the structure of a poem; the structure of protein. 3. something ...

STRUCTURE definition and meaning | Collins English Dictionary

A structure is something that consists of parts connected together in an ordered way. The feet are highly specialised structures made up of 26 small delicate bones.

What does structure mean? - Definitions.net

Structure refers to the arrangement of and relations between the parts or elements of something complex. It can also denote a system or organization established for a certain purpose.

structure, n. meanings, etymology and more | Oxford English ...

There are 17 meanings listed in OED's entry for the noun structure, two of which are labelled obsolete. See 'Meaning & use' for definitions, usage, and quotation evidence.

Explore our comprehensive 'structure of a flower worksheet' to enhance your understanding of plant biology. Perfect for students and educators! Learn more now!

[Back to Home](#)