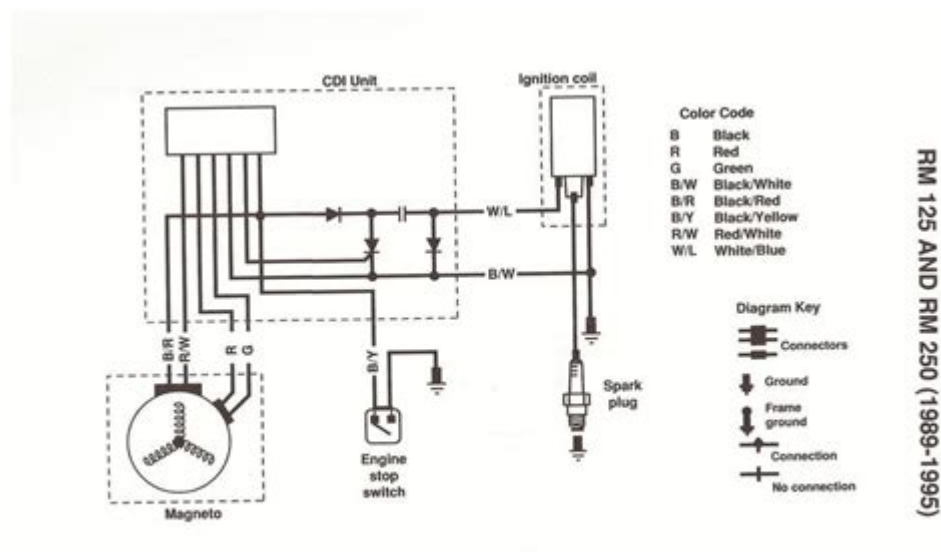


Suzuki 12 Pin Cdi Wiring Diagram



Suzuki 12 Pin CDI Wiring Diagram is a crucial component for any motorcycle or ATV enthusiast looking to understand the electrical systems of their vehicles. The Capacitor Discharge Ignition (CDI) system is essential for controlling the timing and firing of the engine. In this comprehensive guide, we will delve into the intricacies of the Suzuki 12 pin CDI wiring diagram, exploring its importance, the components involved, and how to troubleshoot common issues.

Understanding the CDI System

The CDI system plays a vital role in modern motorcycles and ATVs, providing a reliable and efficient method for ignition. Here are some key points to understand about the CDI system:

- **Functionality:** The CDI unit stores and discharges electrical energy to produce a high voltage spark, igniting the air-fuel mixture in the engine's combustion chamber.
- **Timing Control:** It precisely controls the timing of the spark, which is crucial for optimal engine performance.
- **Durability:** CDI systems are designed to withstand harsh conditions and provide consistent performance over time.

The Components of the Suzuki 12 Pin CDI Wiring Diagram

The Suzuki 12 pin CDI wiring diagram consists of several critical components that work together to ensure the ignition system functions correctly. Understanding these components is essential for troubleshooting and repairs.

1. CDI Unit

The CDI unit is the heart of the ignition system. It receives signals from various sensors and controls when to fire the spark plug.

2. Trigger Coil

The trigger coil generates a signal when the crankshaft reaches a specific position. This signal is sent to the CDI unit to initiate the firing sequence.

3. Ignition Coil

The ignition coil is responsible for transforming the low voltage from the battery into a high voltage that can create a spark at the spark plug.

4. Spark Plug

The spark plug ignites the air-fuel mixture in the engine, providing the necessary explosion to power the vehicle.

5. Stator

The stator generates the electrical energy required for the CDI system and other electrical components in the vehicle.

Reading the Suzuki 12 Pin CDI Wiring Diagram

To effectively use the Suzuki 12 pin CDI wiring diagram, one must understand how to read it. Here's a step-by-step guide:

1. Identify the Pins

The wiring diagram will show a series of pins, usually labeled from 1 to 12. Each pin corresponds to a specific function or connection point. Familiarizing yourself with these labels is the first step in understanding the diagram.

2. Follow the Wiring Paths

Examine how each pin connects to other components such as the ignition coil, trigger coil, and stator. The wiring paths will often be represented by lines that indicate the flow of electricity.

3. Note Color Codes

Most wiring diagrams include color codes for wires, making it easier to identify connections. Take note of these colors as they can help prevent mistakes during installation or repair.

4. Understand the Symbols

Familiarize yourself with common electrical symbols used in the diagram, including those for resistors, grounds, and connections. This knowledge will help you interpret the diagram more effectively.

Troubleshooting Common CDI Issues

Understanding how to diagnose and resolve issues with the CDI system can save time and money. Here are some common problems and their solutions:

1. No Spark

- **Check the CDI Unit:** Ensure the CDI unit is functioning correctly by testing it with a multimeter.
- **Inspect the Trigger Coil:** Verify that the trigger coil is generating a signal; if not, it may need replacement.
- **Examine the Wiring:** Look for any damaged or frayed wires that could be

interrupting the electrical flow.

2. Weak Spark

- **Test the Ignition Coil:** A weak ignition coil can lead to a weak spark; test it to ensure it's operating within specifications.
- **Check the Battery Voltage:** Ensure the battery is fully charged, as low voltage can affect spark strength.
- **Inspect Connections:** Ensure all connections are secure and free of corrosion.

3. Engine Misfiring

- **Inspect the Spark Plug:** A worn or fouled spark plug can cause misfiring; replace it if necessary.
- **Check the Air-Fuel Mixture:** Ensure the mixture is correct, as an imbalance can lead to poor performance.
- **Evaluate Timing Settings:** Verify that the ignition timing is correctly set according to the manufacturer's specifications.

Conclusion

The **Suzuki 12 pin CDI wiring diagram** is an invaluable resource for anyone looking to understand the ignition system of their Suzuki motorcycle or ATV. By familiarizing yourself with the components, learning how to read the wiring diagram, and knowing how to troubleshoot common issues, you can ensure that your vehicle runs smoothly and efficiently. Whether you are a seasoned mechanic or a novice enthusiast, having a solid grasp of the CDI system will enhance your ability to maintain and repair your Suzuki vehicle effectively.

Frequently Asked Questions

What is a CDI unit in Suzuki motorcycles?

A CDI (Capacitor Discharge Ignition) unit is an electronic device that controls the ignition timing in Suzuki motorcycles, providing a spark to ignite the air-fuel mixture in the engine.

How do I identify the 12 pins on a Suzuki CDI wiring diagram?

The 12 pins are usually labeled in the wiring diagram, typically indicating connections for power, ground, ignition coil, pickup coil, and other essential components. Refer to the specific model's service manual for accurate pin identification.

What tools do I need to work on the Suzuki CDI wiring?

You will need basic tools such as a multimeter, wire strippers, crimping tools, and a soldering iron to properly work on the CDI wiring and ensure secure connections.

Can I troubleshoot CDI issues using the wiring diagram?

Yes, a wiring diagram can help you identify and troubleshoot CDI-related issues by allowing you to trace the electrical connections and test components such as wires, connectors, and the CDI unit itself.

What are common symptoms of a faulty CDI unit in Suzuki bikes?

Common symptoms include difficulty starting, intermittent spark, poor acceleration, engine stalling, and backfiring. A faulty CDI can lead to complete engine failure if not addressed.

Where can I find the Suzuki 12 pin CDI wiring diagram?

You can find the wiring diagram in the service manual for your specific Suzuki model, or online in motorcycle forums, repair websites, and manufacturer resources.

Is it safe to modify the CDI wiring connections?

Modifying CDI wiring connections can be risky if not done correctly, as it may lead to engine performance issues or electrical failures. Always consult the wiring diagram and consider professional assistance if unsure.

What should I do if the CDI wiring diagram doesn't match my Suzuki model?

If the wiring diagram doesn't match, check for a more specific diagram for your bike model or year. Variations can exist between models, so ensure you have the correct documentation before proceeding.

Find other PDF article:

<https://soc.up.edu.ph/38-press/files?dataid=BtO52-9343&title=luc-ferry-a-brief-history-of-thought.pdf>

Suzuki 12 Pin Cdi Wiring Diagram

Ignis Maps - Suzuki Forums

Mar 9, 2023 · Hi Folks, I have an 2017 Ignis SZ5. Obviously my maps are out of date. Even to download the new ones from the internet and transfer to the SD card ...

Automatic lights | Suzuki Forums

Nov 8, 2024 · Edwina gma said: Is there a Suzuki customer service GENERAL ENQUIRIES For general enquiries, please call our Customer Service team on ...

Suzuki Vitara GPS/NAVIGATION install - Suzuki Forums

Jan 20, 2021 · Hello, I have on my Suzuki Vitara 2018 1.6/ Firmware version 1850.2_170730 / I have some question: Where and how are the instructions to ...

Canada - Suzuki Forums

Mar 5, 2007 · New Hampshire, USA Suzuki Automotive Meet: Aug 19, 2018 LockDoc3 Mar 18, 2018 2 2.3K

Vitara USB | Suzuki Forums

Oct 6, 2024 · Hi I've got a 2024 vitara full hybrid which I love but I've got a problem with it that even the Suzuki garage can't figure out. when I put a usb stick into ...

Ignis Maps - Suzuki Forums

Mar 9, 2023 · Hi Folks, I have an 2017 Ignis SZ5. Obviously my maps are out of date. Even to download the new ones from the ...

Automatic lights | Suzuki Forums

Nov 8, 2024 · Edwina gma said: Is there a Suzuki customer service GENERAL ENQUIRIES For general enquiries, please ...

Suzuki Vitara GPS/NAVIGATION install - Suzuki Forums

Jan 20, 2021 · Hello, I have on my Suzuki Vitara 2018 1.6/ Firmware version 1850.2_170730 / I have some question: ...

Canada - Suzuki Forums

Mar 5, 2007 · New Hampshire, USA Suzuki Automotive Meet: Aug 19, 2018 LockDoc3 Mar 18, 2018
2 2.3K

Vitara USB | Suzuki Forums

Oct 6, 2024 · Hi I've got a 2024 vitara full hybrid which I love but I've got a problem with it that even the Suzuki garage can't ...

Unlock the secrets of your Suzuki with our comprehensive 12 pin CDI wiring diagram. Understand connections and troubleshoot effectively. Learn more now!

[Back to Home](#)