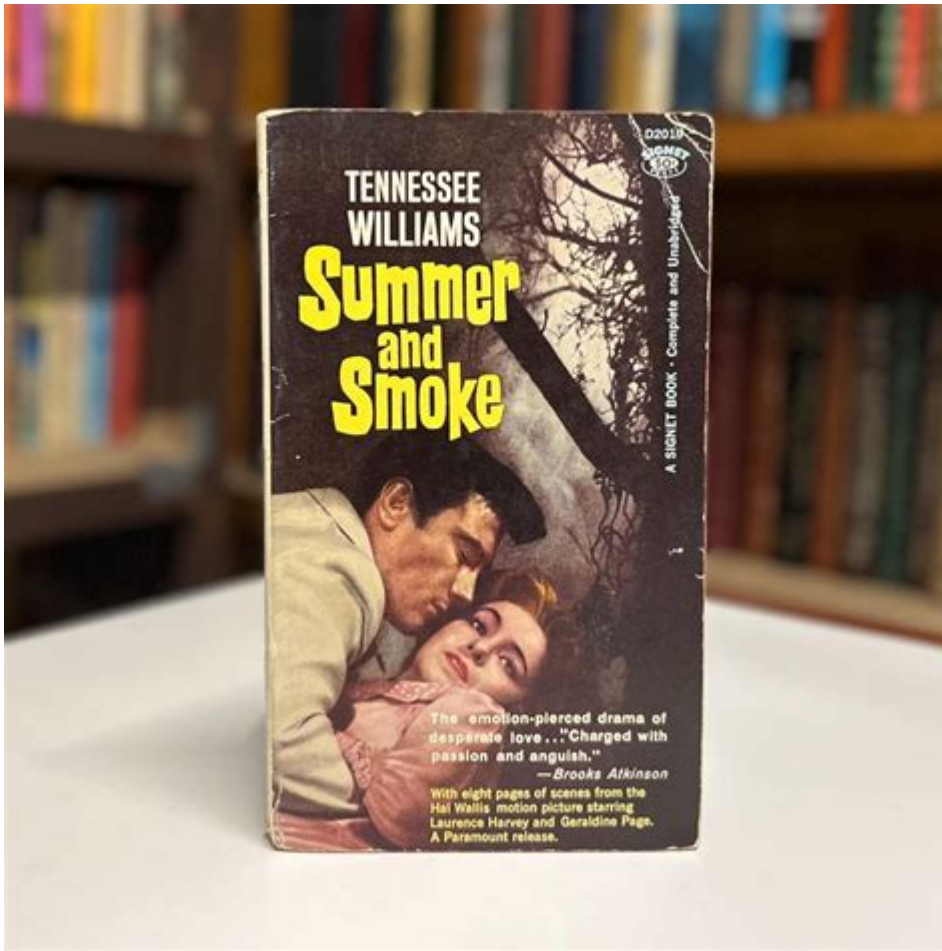


Summer And Smoke By Tennessee Williams



Summer and Smoke is a poignant play by Tennessee Williams that examines the complexities of desire, unfulfilled dreams, and the struggle between the spiritual and sensual aspects of human existence. Written in the late 1940s and first performed in 1944, this semi-autobiographical work reflects many of the themes and techniques that Williams would later refine in his more famous plays. The narrative centers around the lives of two main characters, Alma Winemiller and John Buchanan Jr., whose contrasting personalities and aspirations create a profound exploration of love and longing.

Overview of the Play

Summer and Smoke is set in a small Southern town in the early 20th century, a context that serves as a backdrop for the exploration of societal norms and personal aspirations. The story revolves around Alma, a repressed, intellectual young woman, and John, a free-spirited, sensual man who embodies the physicality and passions of life. Their interactions reveal the tension between Alma's spiritual yearnings and John's carnal desires.

Characters

The play features a small but richly developed cast of characters:

1. Alma Winemiller: The protagonist, she is a delicate and introspective woman caught between her intellectual aspirations and her emotional desires. Alma's character reflects the struggle of someone who yearns for love yet is bound by societal expectations.
2. John Buchanan Jr.: A charismatic and confident young man who represents the physical world and sensual pleasures. John's character serves as a foil to Alma, highlighting her inner conflicts and desires.
3. Mrs. Winemiller: Alma's overbearing mother, who embodies the societal conventions that restrict Alma's freedom and self-expression.
4. Dr. John Buchanan Sr.: John's father, who adds depth to the exploration of the relationship between John and Alma, serving as a link to the more traditional values upheld by the older generation.
5. Various townspeople: These characters help to establish the small-town setting and provide commentary on the main characters' choices and actions.

Thematic Exploration

Summer and Smoke delves into several key themes that resonate throughout the narrative.

Desire and Repression

At the heart of the play is the theme of desire—both its expression and repression. Alma's longing for connection and love is constantly at odds with the societal expectations imposed upon her. Her relationship with John exemplifies this tension. While John embodies the freedom of physical desire, Alma is often paralyzed by her intellectual pursuits and societal fears.

- Alma's Conflict: Alma's desire for John is complicated by her fear of losing her identity. She struggles to reconcile her romantic feelings with her need for independence and self-worth.
- John's Perspective: For John, love is tied to physicality and experience. His carefree approach to life contrasts sharply with Alma's internal struggles, creating a dynamic that is both passionate and tragic.

Spirituality vs. Sensuality

The dichotomy between spirituality and sensuality is another central theme in Summer and Smoke. Alma's character is deeply spiritual, aspiring to elevate her existence beyond the physical realm, while John represents the sensual pleasures of life.

- Alma's Spirituality: Her connection to the spiritual world is reflected in her aspirations to be a doctor and her desire to help others. However, this spirituality often leads to her alienation from the more earthly realities of life.

- John's Sensuality: John's character exemplifies a more hedonistic approach to life. His enjoyment of the physical world serves as a counterpoint to Alma's introspection, raising questions about the balance between body and soul.

Isolation and Loneliness

Isolation is a pervasive theme in the play, with both Alma and John experiencing profound loneliness despite their interactions. Their inability to connect on a deeper level highlights the emotional barriers they construct around themselves.

- Alma's Loneliness: Alma's intellectualism and her mother's dominance create a chasm between her and the outside world. She yearns for love and companionship but finds herself isolated by her own fears and societal expectations.

- John's Isolation: Despite his charm and physicality, John also experiences loneliness. His inability to fully commit to Alma reflects his own struggles with intimacy and vulnerability.

Symbolism and Imagery

Williams employs rich symbolism and imagery throughout *Summer and Smoke*, enhancing the play's emotional depth and thematic complexity.

Smoke and Fire

The title itself—*Summer and Smoke*—serves as a potent symbol. Smoke represents the ephemeral nature of dreams and desires, while fire symbolizes passion and intensity.

- Smoke: Represents the elusive quality of Alma's dreams, often dissipating just as she is on the brink of realizing them.

- Fire: Embodies the passion that John represents, but also the destructive potential of unchecked desire.

Music and Sound

Music plays a significant role in the play, providing an emotional undercurrent that reflects the characters' internal struggles.

- Alma's Music: Her connection to music symbolizes her yearning for beauty and transcendence, contrasting with the more chaotic elements of her life.

- John's Music: The music associated with John often carries a more sensual quality, underscoring his connection to the physical world.

Critical Reception and Legacy

Summer and Smoke received mixed reviews upon its initial release, with some critics recognizing its emotional depth and complex characters, while others found it less accessible than Williams' later works. Over time, however, the play has garnered appreciation for its exploration of profound themes and its rich character development.

Influence on Contemporary Theatre

The themes and techniques found in Summer and Smoke have influenced countless playwrights and continue to resonate within contemporary theatre. Williams' ability to blend the personal with the universal has inspired a generation of writers to delve into the complexities of human emotion and desire.

- Character Development: The depth of character exploration in the play has set a standard for character-driven narratives in modern theatre.
- Thematic Depth: The exploration of desire, isolation, and the balance between spirituality and sensuality remains relevant, encouraging audiences to reflect on their own lives.

Conclusion

Summer and Smoke stands as a powerful testament to Tennessee Williams' mastery of character and theme. Through the tumultuous relationship between Alma and John, Williams presents a profound exploration of the human condition, encapsulating the struggles between desire and repression, spirituality and sensuality, and the isolation that often accompanies the search for love. As audiences engage with this poignant narrative, they are invited to reflect on their own desires and the societal constructs that shape their lives, making Summer and Smoke a timeless piece of American theatre.

Frequently Asked Questions

What are the central themes explored in 'Summer and Smoke' by Tennessee Williams?

The central themes in 'Summer and Smoke' include the struggle between desire and repression, the conflict between the physical and the spiritual, and the exploration of social class and isolation. The play highlights the tension between the characters' emotional needs and societal expectations.

How does the character of Alma Winemiller represent the conflict in 'Summer and Smoke'?

Alma Winemiller embodies the conflict between her yearning for love and her rigid upbringing. She is torn between her intellectual aspirations and her physical desires, symbolizing the struggle between the spiritual and the corporeal. Her character illustrates the difficulties of breaking free from societal

constraints.

What role does the setting play in 'Summer and Smoke'?

The setting of 'Summer and Smoke' in a small Southern town during the early 20th century is crucial as it reflects the social norms and expectations of the time. The oppressive heat symbolizes the characters' emotional turmoil, and the town's conservatism serves as a backdrop for the characters' struggles with their identities.

How does Tennessee Williams use symbolism in 'Summer and Smoke'?

Williams employs various symbols in 'Summer and Smoke,' such as the recurring motif of smoke, which represents the ephemeral nature of desire and the complexities of human relationships. Additionally, the contrast between the physical and the spiritual is symbolized through Alma's interactions with other characters and her own internal conflicts.

What is the significance of the character John Buchanan in the play?

John Buchanan serves as a foil to Alma Winemiller. He represents the more liberated, physical side of life, contrasting with Alma's introspective and repressed nature. His character highlights the tension between desire and societal expectations, ultimately influencing Alma's journey towards self-discovery.

What impact has 'Summer and Smoke' had on contemporary theater?

'Summer and Smoke' has had a significant impact on contemporary theater by showcasing Tennessee Williams' unique exploration of psychological depth and complex characters. Its themes of desire, repression, and social constraints continue to resonate with modern audiences, influencing countless playwrights and productions.

Find other PDF article:

<https://soc.up.edu.ph/06-link/pdf?docid=CPi01-2513&title=and-our-faces-my-heart-brief-as-photos.pdf>

Summer And Smoke By Tennessee Williams

Download PDF Summer And Smoke By Tennessee Williams - PDF

Sep 28, 2024 · Summer And Smoke By Tennessee Williams PDF Download - PDF

Download PDF Summer And Smoke By Tennessee Williams - PDF

Summer And Smoke By Tennessee Williams PDF Download - PDF

summer[unclear]-summer[unclear]_unclear

Oct 24, 2024 · summer[unclear] ...

In (the summer) / on summer - WordReference Forums

Nov 24, 2015 · I would like to go to China in summer/ on summer . We use "the" before summer?
Thank you for an ...

summer[unclear] - [unclear]

May 24, 2025 · [unclear]Summer[unclear] Summer[unclear] ...

[unclear]3[unclear] - [unclear]

Sep 28, 2024 · [unclear] [unclear]3[unclear]3[unclear] [unclear]3[unclear]
[unclear] 1[unclear] ([unclear]); 2[unclear] ...

[unclear]Summer[unclear] - [unclear]

[unclear] [unclear] “[unclear]” [unclear] “[unclear]” [unclear]
[unclear]“[unclear]” [unclear] “[unclear] ...

summer[unclear]-summer[unclear]_unclear

Oct 24, 2024 · summer[unclear]
[unclear] summer[unclear] summer[unclear] ...

In (the summer) / on summer - WordReference Forums

Nov 24, 2015 · I would like to go to China in summer/ on summer . We use "the" before summer?
Thank you for an answer :)

summer[unclear] - [unclear]

May 24, 2025 · [unclear]Summer[unclear] Summer[unclear]
[unclear] [unclear]Summer[unclear] ...

[unclear]summer palace[unclear] - [unclear]

“summer palace” [unclear]summer palace. [unclear]
[unclear]1709[unclear]

[unclear]app“summer”[unclear] - [unclear]

Summer[unclear]30[unclear] [unclear]
[unclear]Summer?

in summer[unclear]in the summer[unclear] - [unclear]

in summer[unclear]in the summer[unclear] in summer[unclear] We
like swimming in summer.[unclear] in the summer[unclear] In the summer of 1980,a patient had
a strange purp lish spot removed from below his ear.1980[unclear] ...

[unclear]Summer[unclear] - [unclear]

[unclear]Summer[unclear] Summer,[unclear]
[unclear] 13 [unclear]

[unclear]summer MP3[unclear] - [unclear]

Oct 31, 2008 · [unclear] - Summer[unclear].mp3 5.88M [unclear]: [unclear] [unclear]: qy6k [unclear]

Explore the themes and characters of "Summer and Smoke" by Tennessee Williams. Discover how desire and longing shape this poignant drama. Learn more!

[Back to Home](#)