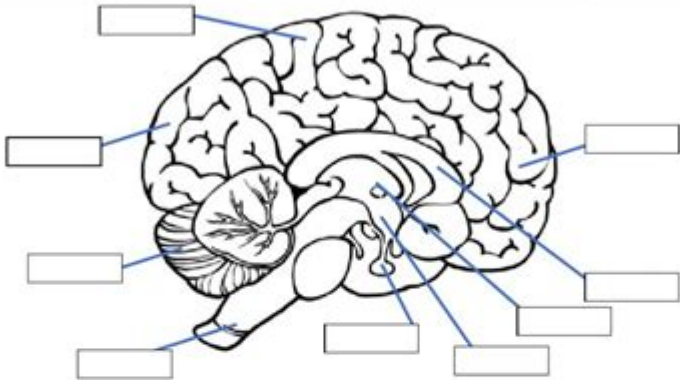


# Structure Of The Brain Worksheet

Internal View of the Brain  
This worksheet is worth 10 points

Part I: Label				
Left frontal lobe	Left Parietal Lobe	Left occipital lobe	Cerebellum	Corpus callosum
Thalamus	Hypothalamus	Pituitary gland	Brain stem	



Part II: Matching: Functions and lobes

- |                         |  |
|-------------------------|--|
| 1. ____ Frontal Lobe    | A. known as the relay center                             |
| 2. ____ Parietal Lobe   | B. responsible for higher level cognitive thought        |
| 3. ____ Occipital Lobe  | C. responsible for communicating between the hemispheres |
| 4. ____ Cerebellum      | D. called the master gland                               |
| 5. ____ Corpus Callosum | E. responsible for breathing, heart beat                 |
| 6. ____ Thalamus        | F. responsible for homeostasis and hormones              |
| 7. ____ Hypothalamus    | G. responsible for processing sensory input              |
| 8. ____ Pituitary Gland | H. responsible for balance and coordination              |
| 9. ____ Brain stem      | I. responsible for visual processing                     |

**Structure of the brain worksheet** is an essential educational resource designed to enhance understanding of the complex anatomy and functions of the human brain. The brain, often dubbed the control center of the body, coordinates various critical functions, from basic survival to advanced cognitive processes. A worksheet focused on the brain's structure can serve multiple purposes, including reinforcing classroom instruction, aiding in self-study, and providing a visual aid for learners of all ages. This article will explore the key components of a brain structure worksheet, its educational significance, and effective methods for utilizing such a resource.

# Understanding the Anatomy of the Brain

The human brain is an intricate organ composed of various structures, each responsible for different functions. Understanding these components is crucial for anyone studying neuroscience, psychology, or biology. A well-structured worksheet can help students identify and learn about these components.

## Main Parts of the Brain

A brain structure worksheet typically includes diagrams and labels that highlight the main parts of the brain. The primary divisions of the brain include:

1. **Cerebrum:** The largest part of the brain, responsible for higher brain functions like thought, action, and emotion. It is divided into two hemispheres (left and right) and four lobes:
  - Frontal Lobe: Involved in reasoning, planning, movement, and problem-solving.
  - Parietal Lobe: Processes sensory information such as touch, temperature, and pain.
  - Temporal Lobe: Important for auditory perception and memory.
  - Occipital Lobe: Responsible for visual processing.
2. **Cerebellum:** Located at the back of the brain, it plays a critical role in coordination, balance, and fine motor skills.
3. **Brain Stem:** Connecting the brain to the spinal cord, the brain stem controls vital functions such as heart rate, breathing, and blood pressure. It comprises three parts:
  - Midbrain: Involved in vision, hearing, and motor control.
  - Pons: Connects different parts of the brain and regulates sleep and arousal.
  - Medulla Oblongata: Responsible for autonomic functions like heart rate and respiration.
4. **Limbic System:** A complex set of structures that manage emotions, memories, and arousal (or stimulation). Key components include:
  - Amygdala: Involved in emotion regulation and processing.
  - Hippocampus: Critical for memory formation and spatial navigation.
  - Thalamus: Acts as a relay station for sensory information.

## Additional Structures

A comprehensive brain structure worksheet may also include other important components, such as:

- Corpus Callosum: A thick band of nerve fibers that connects the two hemispheres and facilitates communication between them.
- Thalamus: A relay station for transmitting sensory information to the appropriate parts of the brain.
- Hypothalamus: Regulates essential bodily functions, including temperature, hunger, thirst, and circadian rhythms.
- Pituitary Gland: Often referred to as the "master gland," it controls various hormonal functions in the body.

## **Educational Significance of a Brain Structure Worksheet**

Brain structure worksheets play a vital role in education for several reasons:

### **1. Visual Learning**

Visual aids, such as diagrams and labels in worksheets, help learners grasp complex concepts more effectively. The brain's structure can be challenging to understand through text alone, making visual representation essential.

### **2. Reinforcement of Knowledge**

Worksheets provide an opportunity for students to reinforce what they have learned in class. By filling in labels, drawing diagrams, or answering questions, students can solidify their understanding of the brain's anatomy.

### **3. Encouragement of Active Learning**

Completing a brain structure worksheet requires active participation from the student. This engagement can lead to better retention of information compared to passive learning methods, such as listening to lectures.

### **4. Assessment of Knowledge**

Educators can use worksheets as assessment tools to gauge students' understanding of brain anatomy. Questions or labeling exercises can reveal areas where students may need additional support.

# How to Use a Brain Structure Worksheet Effectively

To maximize the benefits of a brain structure worksheet, consider the following tips:

## 1. Combine with Interactive Learning

Incorporate hands-on activities alongside the worksheet. For example, consider using 3D brain models or virtual reality resources to provide a more immersive learning experience.

## 2. Encourage Group Work

Promote collaboration by allowing students to work in pairs or small groups. Group discussions can enhance understanding as students explain concepts to one another.

## 3. Utilize Technology

Leverage technology to enhance worksheets. Online resources, such as interactive brain anatomy apps, can complement traditional worksheets, providing students with dynamic learning experiences.

## 4. Follow Up with Discussions

After completing the worksheet, hold a class discussion to review the answers and clarify any misunderstandings. This interactive element reinforces learning and encourages critical thinking.

## 5. Customize for Different Learning Levels

Adapt the worksheet to suit various learning styles and levels. For younger students, focus on basic structures, while more advanced learners can delve deeper into functions and connections.

# Conclusion

In summary, a well-designed structure of the brain worksheet is a powerful educational tool that enhances understanding of the brain's anatomy and functions. By incorporating visual aids, encouraging active participation, and utilizing technology, educators can create an engaging learning environment. The brain is one of the most complex organs in the human body, and worksheets serve as an excellent means to demystify its structure and foster a deeper appreciation for its role in our lives. Whether used in classrooms or for individual study, these worksheets provide essential support for learners navigating the fascinating field of neuroscience.

## Frequently Asked Questions

### **What is the purpose of a 'structure of the brain' worksheet?**

The purpose of a 'structure of the brain' worksheet is to help students learn and visualize the different parts of the brain, their functions, and how they interconnect.

### **What key structures are typically included in a brain worksheet?**

Key structures often included are the cerebrum, cerebellum, brainstem, limbic system, and specific parts like the hippocampus and amygdala.

### **How can a 'structure of the brain' worksheet be used in a classroom setting?**

It can be used as a teaching tool for lectures, a guide for group discussions, or as a hands-on activity for students to label and learn about brain anatomy.

### **What are some effective activities to pair with a brain structure worksheet?**

Effective activities include coloring the brain structures, creating 3D models, or participating in interactive quizzes and games that reinforce the material.

### **How can technology enhance the learning experience with a brain structure worksheet?**

Technology can enhance learning by incorporating interactive apps, virtual dissections, or online quizzes that complement the worksheet content.

## What age group is most suitable for using a 'structure of the brain' worksheet?

These worksheets are typically suitable for middle school students and above, but can be adapted for younger students with simplified content.

## What resources are recommended to accompany a 'structure of the brain' worksheet?

Recommended resources include textbooks on neuroscience, online videos, anatomical models, and educational websites with interactive brain maps.

## How can educators assess student understanding after using a brain structure worksheet?

Educators can assess understanding through quizzes, group discussions, presentations, or by having students create their own diagrams explaining brain structures.

Find other PDF article:

<https://soc.up.edu.ph/63-zoom/pdf?trackid=VIR25-6842&title=twenty-inventors.pdf>

## Structure Of The Brain Worksheet

Structube | Modern furniture, accessories, home decor

Structube offers the best selection of modern furniture at unbeatable prices in Canada. Shop beautiful styles at low prices for the whole house!

*STRUCTURE Definition & Meaning - Merriam-Webster*

The meaning of STRUCTURE is the action of building : construction. How to use structure in a sentence.

**STRUCTURE | English meaning - Cambridge Dictionary**

STRUCTURE definition: 1. the way in which the parts of a system or object are arranged or organized, or a system arranged.... Learn more.

**Structure - Wikipedia**

Types of structure include a hierarchy (a cascade of one-to-many relationships), a network featuring many-to-many links, or a lattice featuring connections between components that are ...

**STRUCTURE Definition & Meaning | Dictionary.com**

Structure definition: mode of building, construction, or organization; arrangement of parts, elements, or constituents.. See examples of STRUCTURE used in a sentence.

Structure - Definition, Meaning & Synonyms | Vocabulary.com

A structure is something of many parts that is put together. A structure can be a skyscraper, an outhouse, your body, or a sentence. Structure is from the Latin word structura which means "a ...

### **Structure - definition of structure by The Free Dictionary**

1. the manner in which something is constructed. 2. the manner in which the elements of anything are organized or interrelated: the structure of a poem; the structure of protein. 3. something ...

### *STRUCTURE definition and meaning | Collins English Dictionary*

A structure is something that consists of parts connected together in an ordered way. The feet are highly specialised structures made up of 26 small delicate bones.

### What does structure mean? - Definitions.net

Structure refers to the arrangement of and relations between the parts or elements of something complex. It can also denote a system or organization established for a certain purpose.

### *structure, n. meanings, etymology and more | Oxford English ...*

There are 17 meanings listed in OED's entry for the noun structure, two of which are labelled obsolete. See 'Meaning & use' for definitions, usage, and quotation evidence.

### **Structube | Modern furniture, accessories, home decor**

Structube offers the best selection of modern furniture at unbeatable prices in Canada. Shop beautiful styles at low prices for the whole house!

### **STRUCTURE Definition & Meaning - Merriam-Webster**

The meaning of STRUCTURE is the action of building : construction. How to use structure in a sentence.

### **STRUCTURE | English meaning - Cambridge Dictionary**

STRUCTURE definition: 1. the way in which the parts of a system or object are arranged or organized, or a system arranged.... Learn more.

### **Structure - Wikipedia**

Types of structure include a hierarchy (a cascade of one-to-many relationships), a network featuring many-to-many links, or a lattice featuring connections between components that are ...

### STRUCTURE Definition & Meaning | Dictionary.com

Structure definition: mode of building, construction, or organization; arrangement of parts, elements, or constituents.. See examples of STRUCTURE used in a sentence.

### Structure - Definition, Meaning & Synonyms | Vocabulary.com

A structure is something of many parts that is put together. A structure can be a skyscraper, an outhouse, your body, or a sentence. Structure is from the Latin word structura which means "a ...

### Structure - definition of structure by The Free Dictionary

1. the manner in which something is constructed. 2. the manner in which the elements of anything are organized or interrelated: the structure of a poem; the structure of protein. 3. something ...

### *STRUCTURE definition and meaning | Collins English Dictionary*

A structure is something that consists of parts connected together in an ordered way. The feet are highly specialised structures made up of 26 small delicate bones.

### **What does structure mean? - Definitions.net**

Structure refers to the arrangement of and relations between the parts or elements of something complex. It can also denote a system or organization established for a certain purpose.

### **structure, n. meanings, etymology and more | Oxford English ...**

There are 17 meanings listed in OED's entry for the noun structure, two of which are labelled obsolete. See 'Meaning & use' for definitions, usage, and quotation evidence.

Explore our comprehensive structure of the brain worksheet

[Back to Home](#)