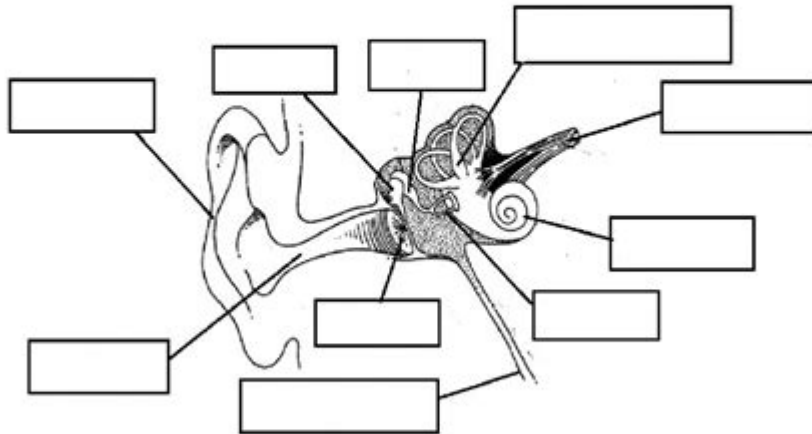


# Structure Of The Human Ear Worksheet

C. The diagram below shows a human ear. Label the diagram by dragging the word to the part it matches on the diagram.

Anvil      Auditory nerve      Cochlea      Ear Canal      Ear drum  
Eustachian tube      Hammer      Pinna      Semi-circular canals      Stirrup



 LIVEWORKSHEETS

STRUCTURE OF THE HUMAN EAR WORKSHEET IS AN ESSENTIAL EDUCATIONAL TOOL THAT AIDS IN THE UNDERSTANDING OF HOW THE HUMAN AUDITORY SYSTEM OPERATES. THE HUMAN EAR IS A COMPLEX ORGAN RESPONSIBLE NOT ONLY FOR HEARING BUT ALSO FOR MAINTAINING BALANCE. THIS ARTICLE WILL DELVE INTO THE INTRICACIES OF THE EAR'S ANATOMY, ITS FUNCTIONS, AND THE SIGNIFICANCE OF UNDERSTANDING THIS STRUCTURE THROUGH WORKSHEETS AND OTHER EDUCATIONAL RESOURCES.

## OVERVIEW OF THE HUMAN EAR

THE HUMAN EAR CAN BE DIVIDED INTO THREE PRIMARY SECTIONS: THE OUTER EAR, THE MIDDLE EAR, AND THE INNER EAR. EACH SECTION PLAYS A VITAL ROLE IN THE PROCESS OF HEARING AND BALANCE. UNDERSTANDING THE STRUCTURE OF THE HUMAN EAR IS CRUCIAL FOR STUDENTS, AUDIOLOGISTS, AND HEALTHCARE PROVIDERS ALIKE.

### 1. THE OUTER EAR

THE OUTER EAR, ALSO KNOWN AS THE EXTERNAL EAR, CONSISTS OF TWO MAIN PARTS: THE PINNA (AURICLE) AND THE EXTERNAL AUDITORY CANAL.

- PINNA (AURICLE):
  - THE VISIBLE PART OF THE EAR THAT PROTRUDES FROM THE HEAD.
  - MADE OF CARTILAGE COVERED BY SKIN.
  - FUNCTIONS TO COLLECT SOUND WAVES AND DIRECT THEM INTO THE EAR CANAL.
- EXTERNAL AUDITORY CANAL:
  - A TUBE-LIKE STRUCTURE THAT LEADS FROM THE PINNA TO THE EARDRUM.
  - APPROXIMATELY 2.5 CM LONG IN ADULTS.
  - CONTAINS CERUMINOUS GLANDS THAT PRODUCE EARWAX (CERUMEN) TO PROTECT THE EAR CANAL FROM DUST AND MICROORGANISMS.

## 2. THE MIDDLE EAR

THE MIDDLE EAR IS AN AIR-FILLED CAVITY THAT LIES BETWEEN THE OUTER EAR AND THE INNER EAR. IT CONTAINS SEVERAL IMPORTANT STRUCTURES:

- TYMPANIC MEMBRANE (EARDRUM):
  - A THIN MEMBRANE THAT SEPARATES THE OUTER EAR FROM THE MIDDLE EAR.
  - VIBRATES IN RESPONSE TO SOUND WAVES, CONVERTING THEM INTO MECHANICAL ENERGY.
- OSSICLES:
  - THREE TINY BONES KNOWN AS THE MALLEUS (HAMMER), INCUS (ANVIL), AND STAPES (STIRRUP).
  - THEY AMPLIFY THE SOUND VIBRATIONS FROM THE EARDRUM AND TRANSMIT THEM TO THE INNER EAR.
- EUSTACHIAN TUBE:
  - A CANAL THAT CONNECTS THE MIDDLE EAR TO THE THROAT (PHARYNX).
  - HELPS TO EQUALIZE AIR PRESSURE ON BOTH SIDES OF THE EARDRUM, ENSURING PROPER VIBRATION.

## 3. THE INNER EAR

THE INNER EAR IS A COMPLEX STRUCTURE THAT CONTAINS THE COCHLEA AND THE VESTIBULAR SYSTEM.

- COCHLEA:
  - A SPIRAL-SHAPED ORGAN THAT CONVERTS MECHANICAL SOUND VIBRATIONS INTO ELECTRICAL SIGNALS.
  - CONTAINS HAIR CELLS THAT MOVE IN RESPONSE TO FLUID WAVES, GENERATING NERVE IMPULSES THAT ARE SENT TO THE BRAIN.
- VESTIBULAR SYSTEM:
  - COMPRISES THE SEMICIRCULAR CANALS AND THE VESTIBULE.
  - RESPONSIBLE FOR MAINTAINING BALANCE AND SPATIAL ORIENTATION.
  - THE SEMICIRCULAR CANALS DETECT ROTATIONAL MOVEMENTS, WHILE THE VESTIBULE SENSES LINEAR ACCELERATION AND GRAVITY.

## FUNCTIONS OF THE HUMAN EAR

UNDERSTANDING THE STRUCTURE OF THE HUMAN EAR HELPS CLARIFY ITS FUNCTIONS, WHICH CAN BE CATEGORIZED INTO TWO PRIMARY ROLES: HEARING AND BALANCE.

### 1. HEARING

THE PROCESS OF HEARING INVOLVES A SERIES OF STEPS:

1. SOUND WAVE COLLECTION: THE PINNA COLLECTS SOUND WAVES AND DIRECTS THEM INTO THE EXTERNAL AUDITORY CANAL.
2. VIBRATION TRANSMISSION: THE SOUND WAVES CAUSE THE TYMPANIC MEMBRANE TO VIBRATE, WHICH THEN MOVES THE OSSICLES.
3. SIGNAL CONVERSION: THE MOVEMENT OF THE OSSICLES AMPLIFIES THE VIBRATIONS AND TRANSMITS THEM INTO THE COCHLEA.
4. NERVE IMPULSE GENERATION: IN THE COCHLEA, HAIR CELLS CONVERT FLUID VIBRATIONS INTO ELECTRICAL SIGNALS, WHICH ARE SENT TO THE AUDITORY NERVE.
5. BRAIN INTERPRETATION: THE AUDITORY NERVE CARRIES THE SIGNALS TO THE BRAIN, WHERE THEY ARE INTERPRETED AS SOUND.

## 2. BALANCE

THE VESTIBULAR SYSTEM PLAYS A KEY ROLE IN MAINTAINING BALANCE THROUGH THE FOLLOWING MECHANISMS:

- DETECTION OF HEAD POSITION:
  - THE SEMICIRCULAR CANALS RESPOND TO ROTATIONAL MOVEMENTS, WHILE THE VESTIBULE DETECTS CHANGES IN HEAD POSITION RELATIVE TO GRAVITY.
- COORDINATION WITH VISION:
  - THE VESTIBULAR SYSTEM WORKS IN CONJUNCTION WITH VISUAL INPUTS TO MAINTAIN EQUILIBRIUM AND SPATIAL AWARENESS.
- REFLEX ACTIONS:
  - THE INFORMATION PROCESSED BY THE VESTIBULAR SYSTEM HELPS COORDINATE REFLEX ACTIONS THAT MAINTAIN BALANCE, SUCH AS ADJUSTING POSTURE OR EYE MOVEMENTS.

## IMPORTANCE OF STRUCTURE OF THE HUMAN EAR WORKSHEET

A STRUCTURE OF THE HUMAN EAR WORKSHEET CAN GREATLY ENHANCE THE LEARNING EXPERIENCE FOR STUDENTS STUDYING ANATOMY AND PHYSIOLOGY. HERE ARE SEVERAL REASONS WHY SUCH A WORKSHEET IS BENEFICIAL:

- VISUAL LEARNING:
  - DIAGRAMS AND ILLUSTRATIONS CAN HELP STUDENTS VISUALIZE THE EAR'S ANATOMY, MAKING IT EASIER TO REMEMBER THE DIFFERENT PARTS AND THEIR FUNCTIONS.
- INTERACTIVE ENGAGEMENT:
  - WORKSHEETS OFTEN INCLUDE ACTIVITIES SUCH AS LABELING DIAGRAMS, MATCHING TERMS, OR ANSWERING QUESTIONS, PROMOTING ACTIVE LEARNING.
- ASSESSMENT TOOL:
  - EDUCATORS CAN USE WORKSHEETS TO ASSESS STUDENTS' UNDERSTANDING OF THE MATERIAL, IDENTIFYING AREAS THAT MAY NEED FURTHER REVIEW.
- REINFORCEMENT OF KNOWLEDGE:
  - COMPLETING WORKSHEETS CAN REINFORCE WHAT STUDENTS HAVE LEARNED THROUGH LECTURES OR TEXTBOOKS, AIDING RETENTION OF INFORMATION.

## CREATING AN EFFECTIVE WORKSHEET

WHEN DESIGNING A WORKSHEET ON THE STRUCTURE OF THE HUMAN EAR, CONSIDER INCLUDING THE FOLLOWING ELEMENTS:

1. DIAGRAMS:
  - PROVIDE CLEAR, LABELED DIAGRAMS OF THE OUTER, MIDDLE, AND INNER EAR.
2. KEY TERMS:
  - INCLUDE A GLOSSARY OF TERMS RELATED TO EAR ANATOMY AND FUNCTION.
3. ACTIVITIES:
  - INCORPORATE A VARIETY OF ACTIVITIES SUCH AS:
    - LABELING EXERCISES
    - FILL-IN-THE-BLANK QUESTIONS
    - MATCHING DEFINITIONS TO TERMS
4. REVIEW QUESTIONS:
  - OFFER A SECTION WITH QUESTIONS THAT ENCOURAGE CRITICAL THINKING AND APPLICATION OF KNOWLEDGE.

## 5. Fun Facts:

- ADD INTERESTING FACTS ABOUT THE EAR, SUCH AS THE RANGE OF HEARING FREQUENCIES IN HUMANS OR COMMON HEARING DISORDERS.

## CONCLUSION

THE STRUCTURE OF THE HUMAN EAR WORKSHEET SERVES AS A VALUABLE EDUCATIONAL RESOURCE THAT ENHANCES UNDERSTANDING OF A COMPLEX YET FASCINATING ORGAN. BY EXPLORING THE ANATOMY AND FUNCTIONS OF THE EAR, STUDENTS CAN APPRECIATE THE INTRICATE PROCESSES INVOLVED IN HEARING AND BALANCE. THIS KNOWLEDGE IS VITAL NOT ONLY FOR STUDENTS IN BIOLOGY OR HEALTH SCIENCES BUT ALSO FOR ANYONE INTERESTED IN THE WORKINGS OF THE HUMAN BODY. WORKSHEETS THAT EFFECTIVELY CONVEY THIS INFORMATION CAN GREATLY IMPROVE LEARNING OUTCOMES, MAKING THE STUDY OF THE EAR BOTH ENGAGING AND INFORMATIVE.

## FREQUENTLY ASKED QUESTIONS

### WHAT ARE THE MAIN PARTS OF THE HUMAN EAR THAT SHOULD BE IDENTIFIED IN A WORKSHEET?

THE MAIN PARTS INCLUDE THE OUTER EAR (PINNA), EAR CANAL, EARDRUM, MIDDLE EAR (OSSICLES: MALLEUS, INCUS, STAPES), INNER EAR (COCHLEA, VESTIBULAR SYSTEM), AND AUDITORY NERVE.

### HOW CAN A WORKSHEET HELP STUDENTS UNDERSTAND THE FUNCTION OF THE HUMAN EAR?

A WORKSHEET CAN PROVIDE LABELED DIAGRAMS, FILL-IN-THE-BLANK ACTIVITIES, AND QUESTIONS THAT ENCOURAGE STUDENTS TO EXPLORE THE FUNCTION OF EACH PART OF THE EAR IN THE HEARING PROCESS.

### WHAT ARE SOME COMMON ACTIVITIES INCLUDED IN A HUMAN EAR STRUCTURE WORKSHEET?

ACTIVITIES MAY INCLUDE LABELING DIAGRAMS, MATCHING PARTS TO THEIR FUNCTIONS, CROSSWORD PUZZLES WITH TERMINOLOGY, AND SHORT ANSWER QUESTIONS ABOUT THE ANATOMY OF THE EAR.

### WHY IS IT IMPORTANT TO STUDY THE ANATOMY OF THE HUMAN EAR?

UNDERSTANDING THE ANATOMY OF THE EAR IS IMPORTANT FOR COMPREHENDING HOW HEARING WORKS, DIAGNOSING EAR-RELATED HEALTH ISSUES, AND APPRECIATING THE COMPLEXITIES OF AUDITORY PROCESSING.

### WHAT AGE GROUP IS APPROPRIATE FOR USING A HUMAN EAR STRUCTURE WORKSHEET?

HUMAN EAR STRUCTURE WORKSHEETS ARE TYPICALLY APPROPRIATE FOR MIDDLE SCHOOL AND HIGH SCHOOL STUDENTS, BUT CAN ALSO BE ADAPTED FOR YOUNGER STUDENTS IN ELEMENTARY SCIENCE CLASSES.

### CAN TECHNOLOGY ENHANCE THE LEARNING EXPERIENCE WHEN USING A HUMAN EAR WORKSHEET?

YES, TECHNOLOGY CAN ENHANCE LEARNING THROUGH INTERACTIVE DIGITAL WORKSHEETS, VIDEOS THAT EXPLAIN EAR ANATOMY, AND VIRTUAL SIMULATIONS THAT ALLOW STUDENTS TO EXPLORE EAR FUNCTIONS IN A HANDS-ON WAY.

## WHAT MISCONCEPTIONS MIGHT STUDENTS HAVE ABOUT THE HUMAN EAR THAT A WORKSHEET COULD ADDRESS?

COMMON MISCONCEPTIONS INCLUDE CONFUSING THE PARTS OF THE EAR WITH THEIR FUNCTIONS, UNDERESTIMATING THE ROLE OF THE INNER EAR IN BALANCE, AND MISUNDERSTANDING HOW SOUND WAVES ARE PROCESSED.

## HOW CAN TEACHERS ASSESS STUDENT UNDERSTANDING OF THE HUMAN EAR USING A WORKSHEET?

TEACHERS CAN ASSESS UNDERSTANDING THROUGH THE ACCURACY OF LABELED DIAGRAMS, THE COMPLETION OF FUNCTION-MATCHING EXERCISES, AND RESPONSES TO OPEN-ENDED QUESTIONS THAT DEMONSTRATE COMPREHENSION OF EAR ANATOMY.

Find other PDF article:

<https://soc.up.edu.ph/09-draft/files?dataid=xuc59-8318&title=bells-by-edgar-allan-poe-analysis.pdf>

## Structure Of The Human Ear Worksheet

*Structube | Modern furniture, accessories, home decor*

Structube offers the best selection of modern furniture at unbeatable prices in Canada. Shop beautiful styles at low prices for the whole house!

STRUCTURE Definition & Meaning - Merriam-Webster

The meaning of STRUCTURE is the action of building : construction. How to use structure in a sentence.

STRUCTURE | English meaning - Cambridge Dictionary

STRUCTURE definition: 1. the way in which the parts of a system or object are arranged or organized, or a system arranged.... Learn more.

*Structure - Wikipedia*

Types of structure include a hierarchy (a cascade of one-to-many relationships), a network featuring many-to-many links, or a lattice featuring connections between components that are ...

*STRUCTURE Definition & Meaning | Dictionary.com*

Structure definition: mode of building, construction, or organization; arrangement of parts, elements, or constituents.. See examples of STRUCTURE used in a sentence.

**Structure - Definition, Meaning & Synonyms | Vocabulary.com**

A structure is something of many parts that is put together. A structure can be a skyscraper, an outhouse, your body, or a sentence. Structure is from the Latin word structura which means "a ...

**Structure - definition of structure by The Free Dictionary**

1. the manner in which something is constructed. 2. the manner in which the elements of anything are organized or interrelated: the structure of a poem; the structure of protein. 3. something ...

*STRUCTURE definition and meaning | Collins English Dictionary*

A structure is something that consists of parts connected together in an ordered way. The feet are highly specialised structures made up of 26 small delicate bones.

### **What does structure mean? - Definitions.net**

Structure refers to the arrangement of and relations between the parts or elements of something complex. It can also denote a system or organization established for a certain purpose.

### **structure, n. meanings, etymology and more | Oxford English ...**

There are 17 meanings listed in OED's entry for the noun structure, two of which are labelled obsolete. See 'Meaning & use' for definitions, usage, and quotation evidence.

### **Structube | Modern furniture, accessories, home decor**

Structube offers the best selection of modern furniture at unbeatable prices in Canada. Shop beautiful styles at low prices for the whole house!

### *STRUCTURE Definition & Meaning - Merriam-Webster*

The meaning of STRUCTURE is the action of building : construction. How to use structure in a sentence.

### **STRUCTURE | English meaning - Cambridge Dictionary**

STRUCTURE definition: 1. the way in which the parts of a system or object are arranged or organized, or a system arranged.... Learn more.

### **Structure - Wikipedia**

Types of structure include a hierarchy (a cascade of one-to-many relationships), a network featuring many-to-many links, or a lattice featuring connections between components that are ...

### **STRUCTURE Definition & Meaning | Dictionary.com**

Structure definition: mode of building, construction, or organization; arrangement of parts, elements, or constituents.. See examples of STRUCTURE used in a sentence.

### **Structure - Definition, Meaning & Synonyms | Vocabulary.com**

A structure is something of many parts that is put together. A structure can be a skyscraper, an outhouse, your body, or a sentence. Structure is from the Latin word structura which means "a ...

### *Structure - definition of structure by The Free Dictionary*

1. the manner in which something is constructed. 2. the manner in which the elements of anything are organized or interrelated: the structure of a poem; the structure of protein. 3. something ...

### *STRUCTURE definition and meaning | Collins English Dictionary*

A structure is something that consists of parts connected together in an ordered way. The feet are highly specialised structures made up of 26 small delicate bones.

### What does structure mean? - Definitions.net

Structure refers to the arrangement of and relations between the parts or elements of something complex. It can also denote a system or organization established for a certain purpose.

### **structure, n. meanings, etymology and more | Oxford English ...**

There are 17 meanings listed in OED's entry for the noun structure, two of which are labelled obsolete. See 'Meaning & use' for definitions, usage, and quotation evidence.

Explore our comprehensive 'structure of the human ear worksheet' to enhance your understanding of ear anatomy. Learn more and boost your knowledge today!

[Back to Home](#)