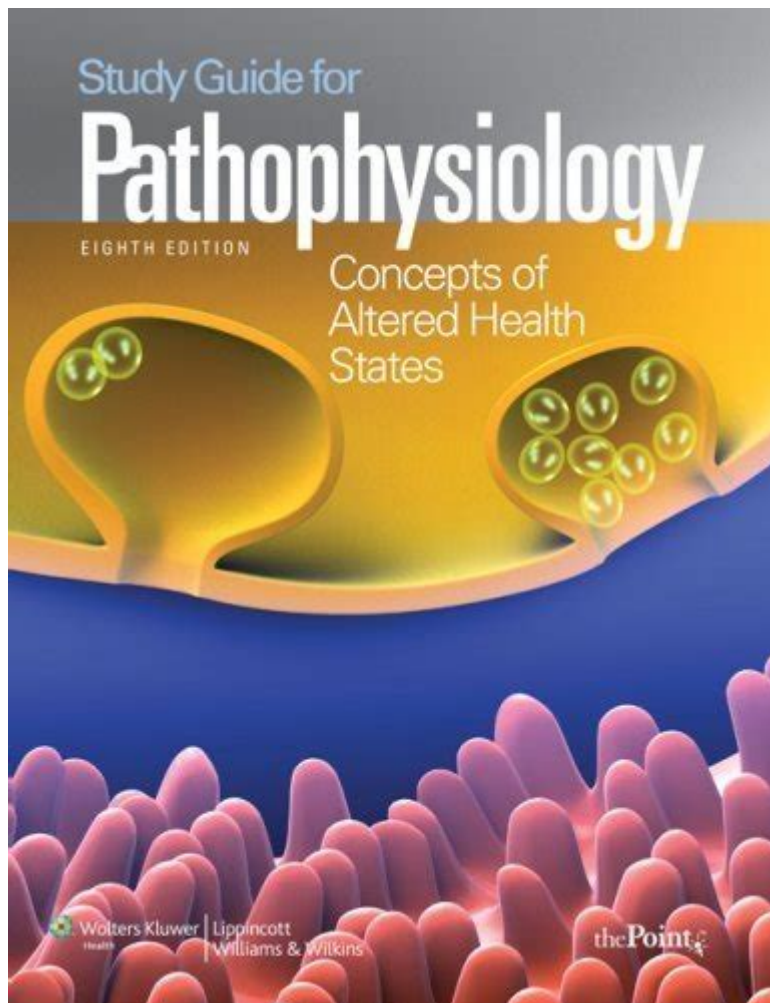


Study Guide Pathophysiology Porth 8th Edition



Study Guide Pathophysiology Porth 8th Edition

The Study Guide Pathophysiology Porth 8th Edition serves as an invaluable resource for students and professionals seeking to deepen their understanding of the complexities of pathophysiology. This guide complements the main textbook, "Pathophysiology: The Biologic Basis for Disease in Adults and Children," by Kathryn L. McCance and Sue E. Huether. It is designed to reinforce key concepts, enhance retention, and provide a structured approach to mastering the subject. This article will explore the features of this study guide, its organization, and how it can be effectively utilized in the study of pathophysiology.

Overview of Pathophysiology

Pathophysiology is a critical field that bridges basic biological sciences and clinical practice. It involves the study of the functional changes that

occur in the body as a result of disease processes. Understanding pathophysiology is essential for healthcare professionals as it provides insight into how diseases affect the body and informs diagnosis and treatment strategies.

Importance of Studying Pathophysiology

1. **Foundation for Clinical Practice:** A solid understanding of pathophysiology is fundamental for effective clinical decision-making.
2. **Interdisciplinary Relevance:** Pathophysiology knowledge is applicable across various healthcare disciplines, including nursing, medicine, pharmacy, and allied health.
3. **Improved Patient Care:** Comprehending disease mechanisms enhances the ability to provide targeted and effective patient care.

Features of the Study Guide

The Study Guide Pathophysiology Porth 8th Edition is meticulously crafted to support students in their learning journey. Its key features include:

Chapter Summaries

Each chapter of the study guide begins with concise summaries that encapsulate the essential concepts. This allows students to quickly review critical information before delving deeper into the material.

Review Questions

The guide includes a variety of review questions that test comprehension and application of the concepts learned. These questions are categorized into:

- **Multiple Choice Questions:** Assessing knowledge recall and application.
- **Short Answer Questions:** Encouraging deeper reflection and understanding.
- **Case Studies:** Providing real-world scenarios for practical application of pathophysiological concepts.

Key Terms and Definitions

A comprehensive list of key terms and definitions is provided to aid in vocabulary acquisition. Understanding the terminology is vital in pathophysiology, as it lays the foundation for more complex discussions.

Illustrations and Diagrams

Visual aids, including illustrations and diagrams, are integrated throughout the guide. These tools help clarify complex processes and enhance the retention of information.

Study Strategies for Utilizing the Study Guide

To maximize the benefits of the Study Guide Pathophysiology Porth 8th Edition, students should adopt effective study strategies:

Active Learning Techniques

1. Engagement with Material: Instead of passive reading, students should engage with the content by summarizing information in their own words.
2. Utilize Flashcards: Create flashcards for key terms and concepts to enhance memorization.
3. Practice Quizzes: Regularly take practice quizzes to gauge understanding and identify areas needing improvement.

Group Study Sessions

Collaborating with peers can deepen understanding and provide different perspectives on complex topics. Group study sessions can include:

- Discussing case studies.
- Teaching each other key concepts.
- Reviewing and quizzing one another.

Time Management and Planning

- Create a Study Schedule: Allocate specific times for study sessions to ensure all material is covered before exams.
- Break Down Material: Divide chapters into manageable sections to avoid overwhelm.

Key Topics Covered in the Study Guide

The Study Guide Pathophysiology Porth 8th Edition covers a wide range of topics essential for understanding pathophysiology:

Cellular Responses to Injury

Understanding how cells respond to injury is fundamental in pathophysiology. Topics include:

- Types of cellular injury (hypoxia, chemical, infectious).
- Mechanisms of cell death (apoptosis vs. necrosis).
- The role of inflammation in healing.

Genetic Disorders

Genetic disorders are a significant focus in pathophysiology, encompassing:

- Chromosomal abnormalities.
- Single-gene disorders.
- Multifactorial inheritance patterns.

Immune System Disorders

The study guide delves into the complexities of the immune system, including:

- Autoimmune diseases.
- Hypersensitivity reactions.
- Immunodeficiency disorders.

Cardiovascular Pathophysiology

Key cardiovascular concepts include:

- Pathogenesis of hypertension.
- Heart failure mechanisms.
- Atherosclerosis and its complications.

Respiratory Disorders

Understanding respiratory pathophysiology involves:

- Mechanisms of asthma and chronic obstructive pulmonary disease (COPD).
- The impact of infections like pneumonia.
- The effects of environmental exposures on respiratory health.

Neurological Disorders

This section emphasizes:

- Mechanisms of neurodegenerative diseases (e.g., Alzheimer's, Parkinson's).
- Stroke pathophysiology.
- The role of neurotransmitters in mental health disorders.

Conclusion

The Study Guide Pathophysiology Porth 8th Edition is an essential tool for anyone aspiring to master the complex field of pathophysiology. Its structured approach, combined with practical study strategies, allows students to engage deeply with the material and develop a comprehensive understanding of disease mechanisms. By utilizing this study guide effectively, learners can enhance their academic performance and, ultimately, their ability to provide high-quality patient care. Embracing the challenges of pathophysiology will lead to greater proficiency in clinical practice and better outcomes for patients.

Frequently Asked Questions

What is the primary focus of the 'Pathophysiology' study guide by Porth, 8th edition?

The primary focus is to provide an understanding of the mechanisms of disease, including the physiological changes that occur in the body as a result of illness.

How does the 8th edition of Porth's Pathophysiology differ from previous editions?

The 8th edition includes updated research findings, enhanced illustrations, and new case studies to better reflect current clinical practices and advances in the field.

Is the study guide suitable for nursing students?

Yes, the study guide is specifically designed to aid nursing students and other healthcare professionals in understanding pathophysiological concepts relevant to patient care.

What types of resources are included in the Porth

8th edition study guide?

The study guide includes practice questions, case studies, summary tables, and illustrations to facilitate learning and application of pathophysiological concepts.

Can the study guide be used for exam preparation?

Absolutely, the study guide is an excellent resource for exam preparation, providing key concepts and practice questions that align with common nursing and healthcare exams.

Are there any online resources that accompany the Porth 8th edition study guide?

Yes, there are online resources available, including access to additional practice questions, interactive learning tools, and a companion website that enhances the study experience.

How does the study guide help in understanding complex pathophysiological processes?

It breaks down complex topics into manageable sections, uses clear explanations, and provides visual aids to enhance comprehension of intricate pathophysiological processes.

What study strategies are recommended for using the Porth 8th edition study guide effectively?

It's recommended to actively engage with the material by summarizing sections, taking notes, practicing with questions, and discussing topics with peers to reinforce understanding.

Find other PDF article:

<https://soc.up.edu.ph/15-clip/Book?ID=jSU21-1527&title=cual-es-la-historia-de-thanksgiving.pdf>

Study Guide Pathophysiology Porth 8th Edition

Ao Wang Quanming Liu ...

Ao Wang Quanming Liu JIMR A Study on Male Masturbation Duration Assisted by Masturbat... ...

study -

Aug 7, 2023 · study ['stʌdi] n vt vi study "to learn or gain knowledge or skill by reading, research, or practice"

[study research](#) [study](#) ...

“study” “research” “” Study

[study on study of](#) -

Feb 24, 2025 · study on study of study on study of study of ...

-

costudy timing app

-

14

study research **st**

Nov 13, 2024 · study research st “study” “research” “Study” ...

[\(Research Proposal\)](#)

Nov 29, 2021 · RP

pilot study *rct* -

Jul 29, 2024 · pilot study rct pilot study RCT RCT Randomized Controlled Trial

study -

studied 'stɑdɪd 'stɑdɪd study He hadn't studied hard so that he failed in the exam.

Ao Wang **Quanming Liu** ...

Ao Wang Quanming Liu JIMR A Study on Male Masturbation Duration Assisted by Masturbat...

study -

Aug 7, 2023 · study ['stʌdi] ['stʌdi] n vt vi study “”

[study research](#) [study](#) ...

“study” “research” “” Study

[study on study of](#) -

Feb 24, 2025 · study on study of study on study of study of ...

-

costudy timing app

-

14

studyresearch?st_

Nov 13, 2024 · studyresearchst“study”“research”
“Study” ...

(Research Proposal)

Nov 29, 2021 · RP
...

pilot studyrct -

Jul 29, 2024 · pilot studyrctpilot studyRCTRCT
Randomized Controlled Trial ...

study -

studystudied 'stɹdɪd 'stɹdɪd studyHe hadn't studied hard
so that he failed in the exam. ...

Unlock your understanding of pathophysiology with our comprehensive study guide for Porth's 8th
edition. Enhance your learning today—discover how!

[Back to Home](#)