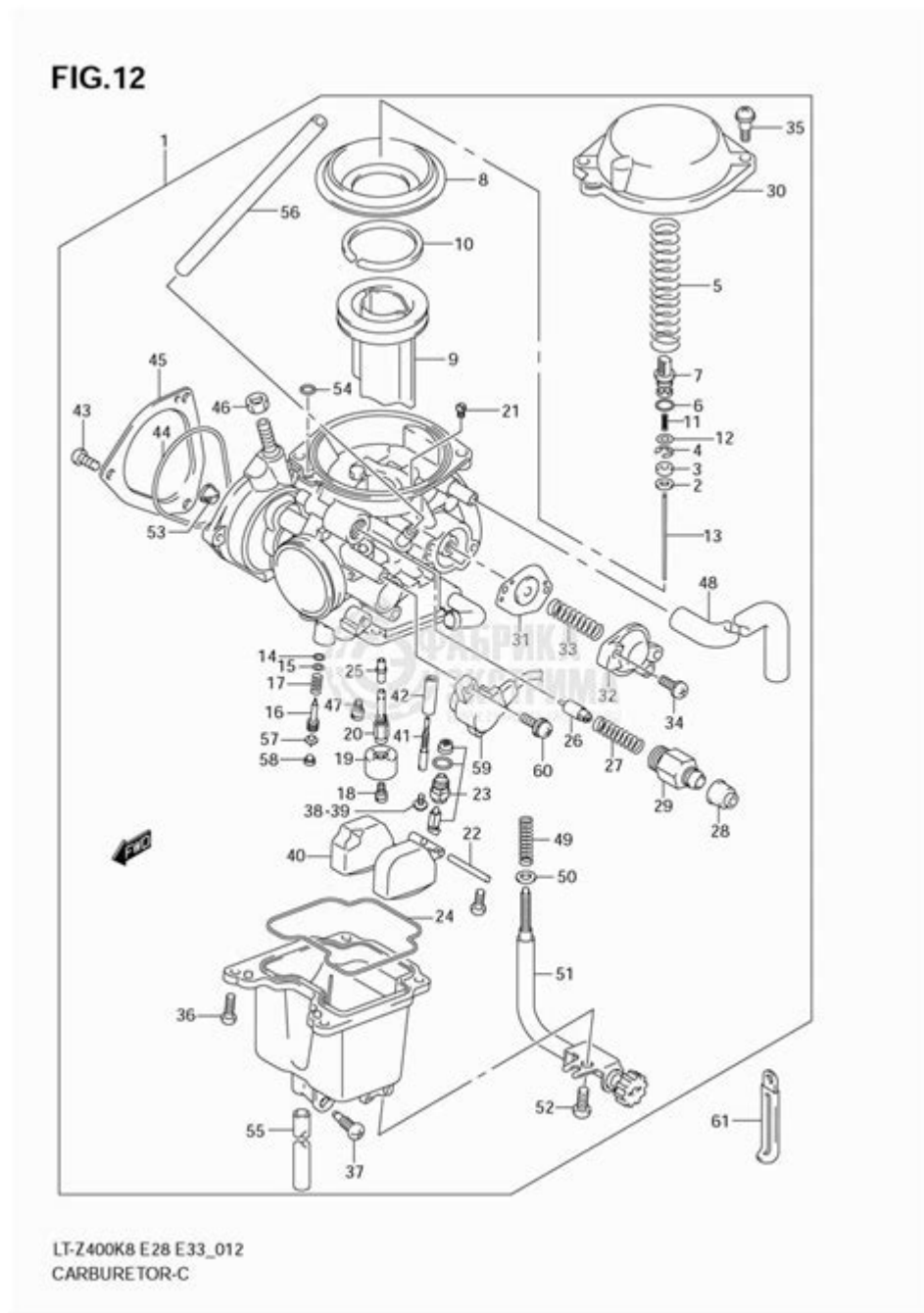


# Suzuki Ltz 400 Carburetor Hose Diagram



## Suzuki LTZ 400 Carburetor Hose Diagram

The Suzuki LTZ 400, a popular all-terrain vehicle (ATV), is known for its powerful performance and reliability. One of the critical components that ensure its smooth operation is the carburetor. Understanding the carburetor hose diagram is essential for anyone looking to maintain or troubleshoot this vehicle's fuel system. This article will delve into the specifics of the Suzuki LTZ 400 carburetor hose diagram, providing a detailed overview of the component, its hoses, and how they function within the system.

# Overview of the Suzuki LTZ 400 Carburetor

The carburetor in the Suzuki LTZ 400 is responsible for mixing air and fuel to create a combustible mixture that powers the engine. Proper functioning of the carburetor is vital for optimal engine performance, fuel efficiency, and emissions control. The LTZ 400 uses a single-carburetor system, which simplifies the setup but requires precise tuning and maintenance.

## Key Components of the Carburetor

Before diving into the hose diagram, it's essential to understand the primary components of the carburetor itself:

1. Float Chamber: Maintains a constant fuel level for consistent operation.
2. Main Jet: Controls the fuel flow in the main circuit.
3. Pilot Jet: Responsible for fuel delivery at low RPMs.
4. Throttle Valve: Regulates the amount of air-fuel mixture entering the engine.
5. Choke: Ensures easy starting by restricting airflow when the engine is cold.

## The Importance of Carburetor Hoses

The hoses connected to the carburetor perform several critical functions:

- Fuel Supply Hose: Delivers fuel from the tank to the carburetor.
- Vent Hose: Allows air to enter the float chamber to maintain pressure equilibrium.
- Overflow Hose: Prevents fuel from spilling over if the float mechanism fails.
- Drain Hose: Allows excess fuel to drain from the carburetor during maintenance or troubleshooting.

Understanding the layout and function of these hoses is crucial for diagnosing issues and ensuring the proper operation of the ATV.

## Suzuki LTZ 400 Carburetor Hose Diagram

The carburetor hose diagram for the Suzuki LTZ 400 illustrates the routing and connection points for each hose. Having a visual reference can significantly aid in maintenance and repair. Here's a breakdown of the typical hose layout:

## 1. Fuel Supply Hose

- Location: Connects the fuel tank to the carburetor's fuel inlet.
- Function: Provides the necessary fuel for mixing with air.
- Material: Typically made from fuel-resistant rubber or plastic.

## 2. Vent Hose

- Location: Attached to the top of the carburetor.
- Function: Provides ventilation to the float chamber, preventing vacuum formation.
- Material: Generally a thin rubber hose.

## 3. Overflow Hose

- Location: Positioned at the bottom of the carburetor.
- Function: Drains excess fuel if the float fails to shut off the fuel supply.
- Material: Similar to the vent hose, it is usually made from rubber.

## 4. Drain Hose

- Location: Also at the bottom of the carburetor, often near the overflow hose.
- Function: Used during maintenance to drain old fuel from the carburetor.
- Material: Flexible rubber or plastic.

## How to Read the Carburetor Hose Diagram

Reading the carburetor hose diagram effectively requires familiarity with its symbols and layout. Here are some tips on how to interpret the diagram:

- Identify Hose Types: Each hose is usually labeled to indicate its function (e.g., fuel supply, vent).
- Follow Connection Points: Lines connecting components represent hoses. Follow these lines to see how the system is interconnected.
- Refer to the Legend: Diagrams often include a legend or key that explains symbols or color codes used.
- Cross-Reference with the Manual: Always cross-reference the diagram with your service manual for specific details related to your vehicle.

# Common Issues Related to Carburetor Hoses

Understanding common issues can help you troubleshoot effectively. Here are some typical problems associated with the carburetor hoses:

1. **Fuel Leaks:** Damaged or improperly connected hoses may lead to fuel leaks, which can cause performance issues and safety hazards.
2. **Clogged Vent Hose:** A clogged vent hose can create vacuum pressure, leading to fuel starvation and poor engine performance.
3. **Overflow Problems:** If the overflow hose is blocked or kinked, it may cause fuel to spill out of the carburetor, leading to a messy situation and possible fire hazard.
4. **Incorrect Connections:** Misconnecting hoses can lead to improper fuel delivery and engine performance issues.

## Maintenance Tips for Carburetor Hoses

Regular maintenance of the carburetor and its hoses will prolong the life of your Suzuki LTZ 400 and ensure optimal performance. Here are some maintenance tips:

- **Inspect Regularly:** Check hoses for cracks, wear, or damage. Replace any hoses that show signs of deterioration.
- **Clean the Carburetor:** Periodically clean the carburetor to prevent fuel deposits from clogging jets and hoses.
- **Check Connections:** Ensure all hoses are securely connected and free from leaks.
- **Use Quality Parts:** When replacing hoses, use OEM or high-quality aftermarket parts to ensure compatibility and durability.

## Conclusion

Understanding the Suzuki LTZ 400 carburetor hose diagram is an invaluable skill for any ATV owner or enthusiast. By familiarizing yourself with the functions and connections of each hose, you can maintain your vehicle effectively and troubleshoot any issues that may arise. Regular inspections, proper maintenance, and prompt repairs will ensure that your LTZ 400 continues to deliver the performance and reliability that it is known for. By following the guidelines outlined in this article, you will be well-equipped to handle your ATV's carburetor system with confidence.

## Frequently Asked Questions

## **What is the purpose of the carburetor hose in the Suzuki LTZ 400?**

The carburetor hose in the Suzuki LTZ 400 is responsible for delivering fuel and air mixture to the engine for combustion, ensuring proper performance and efficiency.

## **Where can I find a detailed hose diagram for the Suzuki LTZ 400 carburetor?**

A detailed hose diagram for the Suzuki LTZ 400 carburetor can typically be found in the service manual, online forums, or dedicated ATV repair websites.

## **What are common issues related to the carburetor hoses in the Suzuki LTZ 400?**

Common issues include cracks or leaks in the hoses, which can lead to poor engine performance, fuel leakage, or starting problems.

## **How do I identify the different hoses connected to the Suzuki LTZ 400 carburetor?**

You can identify different hoses by referencing the carburetor hose diagram, which labels each hose according to its function, such as fuel supply, overflow, and vent lines.

## **Can I replace the carburetor hoses on the Suzuki LTZ 400 myself?**

Yes, replacing the carburetor hoses on the Suzuki LTZ 400 can be done as a DIY project, as long as you have the right tools and follow the hose diagram for correct placement.

## **What type of hose material is recommended for Suzuki LTZ 400 carburetor replacements?**

It is recommended to use high-quality rubber or silicone hoses that can withstand fuel and heat for replacing Suzuki LTZ 400 carburetor hoses.

## **How can I ensure my Suzuki LTZ 400 carburetor hoses are in good condition?**

Regularly inspect the hoses for cracks, wear, and leaks, and ensure they are properly connected to the carburetor and fuel lines.

## **What tools do I need to access and replace the**

## carburetor hoses on a Suzuki LTZ 400?

You will need basic tools such as screwdrivers, pliers, and possibly a socket set to loosen clamps and remove the carburetor for access to the hoses.

Find other PDF article:

<https://soc.up.edu.ph/20-pitch/pdf?dataid=iHp39-9923&title=english-regents-2023-answer-key.pdf>

## Suzuki Ltz 400 Carburetor Hose Diagram

### **Ignis Maps - Suzuki Forums**

Mar 9, 2023 · Hi Folks, I have an 2017 Ignis SZ5. Obviously my maps are out of date. Even to download the new ones from the internet and transfer to the SD card from my PC to my car and ...

### **Automatic lights | Suzuki Forums**

Nov 8, 2024 · Edwina gma said: Is there a Suzuki customer service GENERAL ENQUIRIES For general enquiries, please call our Customer Service team on 08085 011959 option 2 or ...

### *Suzuki Vitara GPS/NAVIGATION install - Suzuki Forums*

Jan 20, 2021 · Hello, I have on my Suzuki Vitara 2018 1.6/ Firmware version 1850.2\_170730 / I have some question: Where and how are the instructions to install an updated MAP for Europe? What ...

### **Canada - Suzuki Forums**

Mar 5, 2007 · New Hampshire, USA Suzuki Automotive Meet: Aug 19, 2018 LockDoc3 Mar 18, 2018 2 2.3K

### **Vitara USB | Suzuki Forums**

Oct 6, 2024 · Hi I've got a 2024 vitara full hybrid which I love but I've got a problem with it that even the Suzuki garage can't figure out. when I put a usb stick into the slot it connects and plays the ...

### **Cvt transmission - Suzuki Forums**

Aug 28, 2011 · Software update: Campai gn Notice Suzuki has received reports of the Check Engine Lamp turning ON (DTC P0721 and/or P0777) and loss of acceleration or higher than normal ...

### *Samurai stalling - Suzuki Forums*

Dec 26, 2008 · I have a 1988 Samurai. I took it off roading today and while driving home it started to stall when I was driving. It will run until I punt it in gear and let out on the clutch. In order to get ...

### coolant? - Suzuki Forums

Sep 2, 2009 · Suzuki Super-Blue coolant is not yet available, we have been advised to use Subaru Super-Blue coolant, it is made by the same manufacturer Suzuki sources in Japan and will be the ...

### Suzuki Scross - USB issue | Suzuki Forums

Nov 26, 2024 · Suzuki Scross - USB issue Jump to Latest 370 views 1 reply 2 participants last post by fordem Nov 26, 2024 K

### **p1431 | Suzuki Forums**

Jun 26, 2024 · hello, i got a p1431 fuel level sensor 2 circuit performance? is this right, and what is it? on my 2006 suzuki Grand Vitara, i have tried to swap my temeratur sensor with no luck, the ...

### **Ignis Maps - Suzuki Forums**

Mar 9, 2023 · Hi Folks, I have an 2017 Ignis SZ5. Obviously my maps are out of date. Even to download the new ones from the internet and transfer to the SD card from my PC to my car and back its crazy money. Would anyone have the new maps I can download and transfer to my SD card for my car? Thanks for any help!

### *Automatic lights | Suzuki Forums*

Nov 8, 2024 · Edwina gma said: Is there a Suzuki customer service GENERAL ENQUIRIES For general enquiries, please call our Customer Service team on 08085 011959 option 2 or alternatively you can email them on customerservices@suzuki.co.uk. Monday - Friday 8.30am - 5.30pm, excluding Bank Holidays.

### **Suzuki Vitara GPS/NAVIGATION install - Suzuki Forums**

Jan 20, 2021 · Hello, I have on my Suzuki Vitara 2018 1.6/ Firmware version 1850.2\_170730 / I have some question: Where and how are the instructions to install an updated MAP for Europe? What maps are free to download and install? Thanks so much

### **Canada - Suzuki Forums**

Mar 5, 2007 · New Hampshire, USA Suzuki Automotive Meet: Aug 19, 2018 LockDoc3 Mar 18, 2018 2 2.3K

### *Vitara USB | Suzuki Forums*

Oct 6, 2024 · Hi I've got a 2024 vitara full hybrid which I love but I've got a problem with it that even the Suzuki garage can't figure out. when I put a usb stick into the slot it connects and plays the music that's on it, but occasionally it stops playing music and ...

### *Cvt transmission - Suzuki Forums*

Aug 28, 2011 · Software update: Campai gn Notice Suzuki has received reports of the Check Engine Lamp turning ON (DTC P0721 and/or P0777) and loss of acceleration or higher than normal engine RPM on certain 2011 Kizashi and 2010 SX4 vehicles equipped with CVT. The Check Engine Lamp may turn ON if the TCM detects an abnormality in the CVT pulley ratio. ...

### Samurai stalling - Suzuki Forums

Dec 26, 2008 · I have a 1988 Samurai. I took it off roading today and while driving home it started to stall when I was driving. It will run until I punt it in gear and let out on the clutch. In order to get it home I had to pump the gas all the way home. It will run for a second while pushing the gas and...

### **coolant? - Suzuki Forums**

Sep 2, 2009 · Suzuki Super-Blue coolant is not yet available, we have been advised to use Subaru Super-Blue coolant, it is made by the same manufacturer Suzuki sources in Japan and will be the same supplier used if/when Suzuki dealerships will get it ...

### **Suzuki Scross - USB issue | Suzuki Forums**

Nov 26, 2024 · Suzuki Scross - USB issue Jump to Latest 370 views 1 reply 2 participants last post by fordern Nov 26, 2024 K

### *p1431 | Suzuki Forums*

Jun 26, 2024 · hello, i got a p1431 fuel level sensor 2 circuit performance? is this right, and what is it? on my 2006 suzuki Grand Vitara, i have tried to swap my temeratur sensor with no luck, the dealer said that the lamp was a glowing issue?

"Explore the complete Suzuki LTZ 400 carburetor hose diagram for optimal performance. Learn more about setup and maintenance tips to enhance your ride!"

[Back to Home](#)