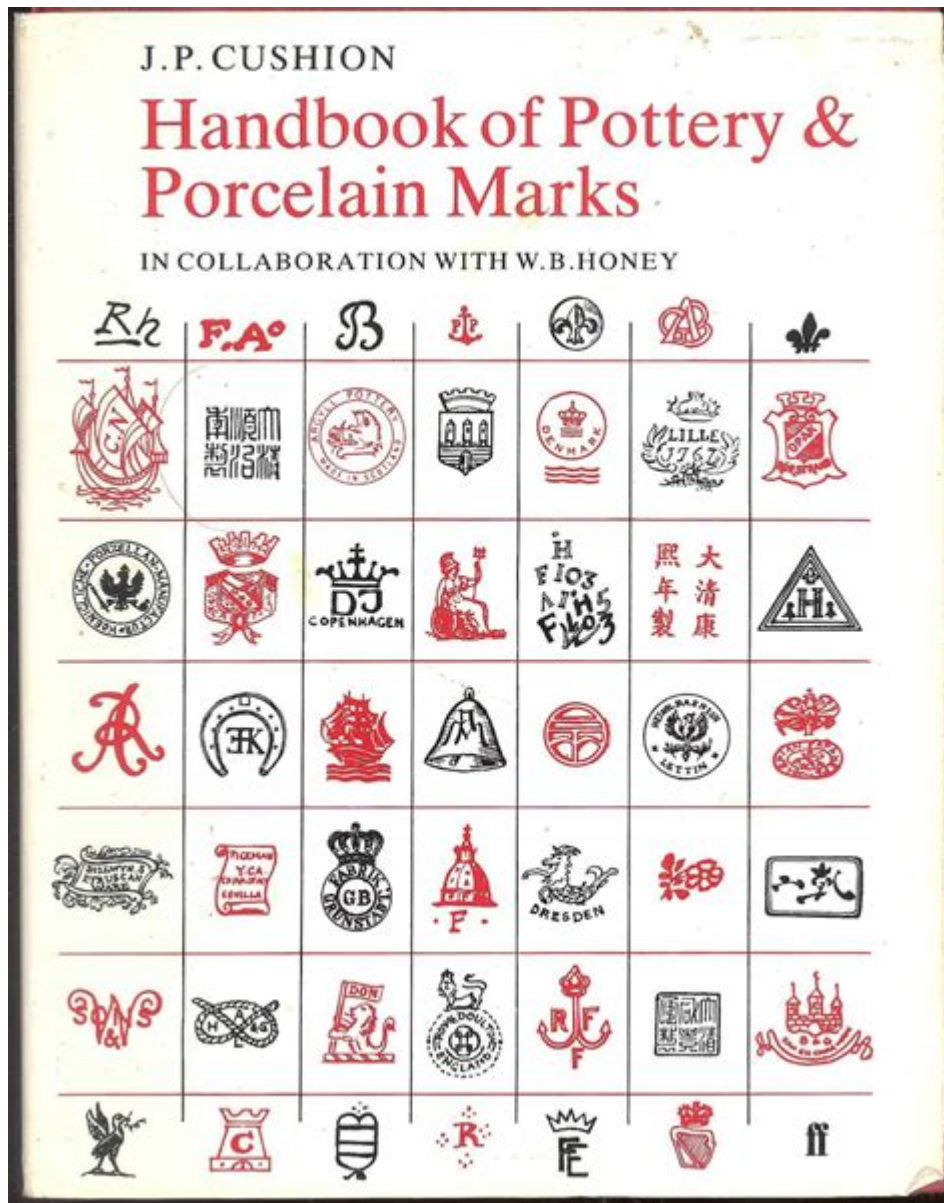


Studio Pottery Marks Identification Guide



Studio pottery marks identification guide is an essential resource for collectors, enthusiasts, and anyone interested in the art of pottery. Studio pottery is often characterized by unique designs and handmade craftsmanship, which makes marking identification both intriguing and sometimes challenging. This guide aims to provide an in-depth look at studio pottery marks, their significance, and how to identify them effectively.

Understanding Studio Pottery

Studio pottery refers to ceramics made by individual artisans or small groups, as opposed to mass production. Each piece is typically unique, reflecting the artist's personal style, techniques, and materials used. Because these pots are often crafted in small batches, the marks left by the potters are crucial for identifying the work and tracing its origin.

The Importance of Marks

Pottery marks serve several important functions:

1. **Authenticity:** Marks can help confirm the authenticity of a piece, especially in the case of well-known artists.
2. **Provenance:** They provide information about the artist, studio, and sometimes the date of creation.
3. **Value:** Recognizing a mark can affect the market value of a piece. Some marks are highly sought after, while others are less recognized.

By understanding how to identify these marks, collectors can make more informed decisions when purchasing studio pottery.

Types of Studio Pottery Marks

Studio pottery marks can come in various forms, and they often include:

- **Signature Marks:** These are typically the artist's name or initials and are often hand-written or stamped onto the piece.
- **Symbolic Marks:** Potters may use symbols or icons that have personal significance or represent their studio.
- **Imprint Marks:** These can include a series of letters, numbers, or design elements that are stamped or impressed into the clay.

Common Marking Techniques

Potters use different techniques to create their marks, which can affect how they appear:

1. **Stamps:** A common method where a pre-made stamp is used to imprint a mark into the clay before firing.
2. **Engraving:** Some potters choose to carve their marks directly into the clay, providing a more distinct look.
3. **Handwritten:** Using a brush or tool, potters may write their name or initials directly on the piece.

Each technique can yield different textures and appearances, making it essential to understand these variations when identifying marks.

Identifying Studio Pottery Marks

Identifying studio pottery marks involves several steps. Here's a structured approach that can assist collectors and enthusiasts in recognizing the origin of a piece.

Step 1: Examine the Piece Closely

- Look for Marks: Check the bottom and the sides of the pottery for any signs of a mark. Some marks are very subtle or positioned in hard-to-see places.
- Consider the Shape and Style: The overall design, color, and shape can provide context for the mark. Certain potters have distinctive styles that can help narrow down possibilities.

Step 2: Research the Mark

Once you find a mark, begin your research:

- Books and Catalogs: There are many reference books available that specialize in pottery marks. Look for those specifically focusing on studio pottery.
- Online Resources: Websites, forums, and databases can provide images and descriptions of known marks. Some popular sites include:
 - The Pottery Marks Database
 - The Marks Project
 - Collectors' forums and social media groups

Step 3: Consult Experts

If you're struggling to identify a mark, consider reaching out to experts:

- Appraisers: Professional appraisers can offer insights into the piece's value and origin.
- Local Pottery Associations: Joining a pottery association can connect you with knowledgeable individuals who can assist in mark identification.

Common Studio Pottery Marks Examples

While thousands of potters exist, some marks are particularly well-known. Here are a few examples that collectors frequently encounter:

- **Bernard Leach:** Often marked with his name or initials, Leach is a significant figure in studio pottery.
- **Lucie Rie:** Known for her elegant forms and glazes, her pieces are often marked with a simple 'LR'.
- **David Leach:** His works frequently feature a combination of his initials and studio name.
- **Peter Voulkos:** Notable for his abstract works, Voulkos often left his mark in an expressive style.

These marks can help guide collectors in recognizing pieces from these influential potters.

Mark Variations and Context

Understanding that marks can have variations is essential. A single artist might use different marks throughout their career or even change their mark for different series of works. Context plays a crucial role in this, including:

- Time Period: Some potters may have changed their marks at different points in their career.
- Location: Marks may vary based on the studio or workshop where the pottery was produced.

Maintaining a Record of Marks

For avid collectors, maintaining a personal record of marks can be invaluable. Consider creating a reference book or digital database that includes:

- Images of Marks: Take photos of the marks you encounter, along with the pieces they belong to.
- Details of the Piece: Include information such as size, shape, and glaze color.
- Provenance: Note any history or previous ownership of the piece if known.

This personal archive can serve as a valuable resource when identifying future pieces.

Conclusion

The **studio pottery marks identification guide** serves as a vital tool for anyone looking to delve deeper into the world of studio pottery. By understanding the significance of marks, the techniques used to create them, and the research methods necessary for identification, collectors can enhance their appreciation for these unique ceramic artworks. Whether you are a seasoned collector or a casual enthusiast, mastering the art of mark identification can greatly enrich your pottery journey.

Frequently Asked Questions

What are studio pottery marks?

Studio pottery marks are unique symbols, signatures, or stamps used by potters to identify their work, indicating the maker and often the location or year of production.

How can I identify a studio pottery mark?

To identify a studio pottery mark, examine the piece closely for any stamps, incised signatures, or painted marks. Research the styles and characteristics of known potters to match the mark.

Are studio pottery marks standardized?

No, studio pottery marks are not standardized; each potter creates their own unique mark, making identification a personal and sometimes challenging process.

Where can I find resources for identifying pottery marks?

Resources for identifying pottery marks include books on pottery, online databases, pottery forums, and websites dedicated to ceramics and antique identification.

What is the significance of a pottery mark?

A pottery mark signifies the artist's identity, which can add value and provenance to a piece, helping collectors and enthusiasts understand the origin and authenticity.

Can pottery marks change over time?

Yes, potters may change their marks throughout their careers, so a single potter's work might feature different marks from various periods.

How do I determine the age of a studio pottery piece using its mark?

To determine the age of a studio pottery piece, compare the mark with documented records and catalogs that outline the potter's mark history and changes over time.

What are some common features of studio pottery marks?

Common features of studio pottery marks include initials, full names, symbols, or unique designs that reflect the potter's style. They may also include the year or location.

Are there any online tools for pottery mark identification?

Yes, there are online tools and databases, such as the Pottery Marks Database, where users can search for and compare different pottery marks to aid in identification.

Find other PDF article:

<https://soc.up.edu.ph/42-scope/Book?dataid=tLZ02-6155&title=multinational-business-finance-12th-edition.pdf>

[Studio Pottery Marks Identification Guide](#)

Mac Studio M4 Max / M3 Ultra Mac Studio ...

Mar 5, 2025 · Mac Studio 16TB 8TB M3 Ultra 512GB M2 Ultra 192GB

Discovery Studio -

Discovery Studio Help-Tutorials
Discovery Studio
Discovery Studio Visualizer client
mdm_random.sd
1aq1.pdb

game ready studio -

game ready studio
CUDA
studio ...

Synthesizer V Studio 2 Pro: AI-sång bortom det generiska

Apr 28, 2025 · För låtskrivare är det en dröm att ha ständig tillgång till demosångare som snabbt och enkelt kan lägga sångspår på nyskrivna låtar. Nu är det möjligt med hjälp av AI. Vi tittar närmare på Dreamtonics Synthesizer V Studio 2 Pro.

HP ZBook Studio 16 G11

Jan 15, 2025 · HP ZBook Studio 16 G11
"Studio 16 G11"
Studio 16 G11 GPU ...

LM-studio -

LM-studio

C# Visual Studio IDE VS Code ...

Windows Visual Studio
Ubuntu VS Code
C# VS Code
C# 2023 12 Visual Studio
UI

Visual Studio VSCode -

Microsoft Visual Studio VS Visual Studio Code VSCode
1 Visual Studio
Visual Studio VS
IDE
Windows macOS

M4 max Mac studio M2 ultra -

Feb 3, 2025 · M2 Ultra MAC Studio
M1 MAX
M1 MAX 64G
M2 Ultra 192G
M4 MAX ...

LM studio CPU+GPU+NPU -

LM studio CPU+GPU+NPU
CUDA
CPU+GPU
Intel Ultra9
NPU

M4 Max / M3 Ultra Mac Studio -

Mar 5, 2025 · Mac Studio 16TB
8TB
M3 Ultra 512GB

Discovery Studio -

Discovery Studio Help-Tutorials
Discovery Studio
Discovery ...

game ready studio -

game ready studio ...

Synthesizer V Studio 2 Pro: AI-sång bortom det generiska

Apr 28, 2025 · För låtskrivare är det en dröm att ha ständig tillgång till demosångare som snabbt och enkelt kan lägga sångspår på ...

HP ZBook Studio 16 G11

Jan 15, 2025 · HP ZBook Studio 16 G11 "Studio 16 G11 " ...

Unlock the secrets of your pottery with our studio pottery marks identification guide. Discover how to recognize and date your favorite pieces today!

[Back to Home](#)