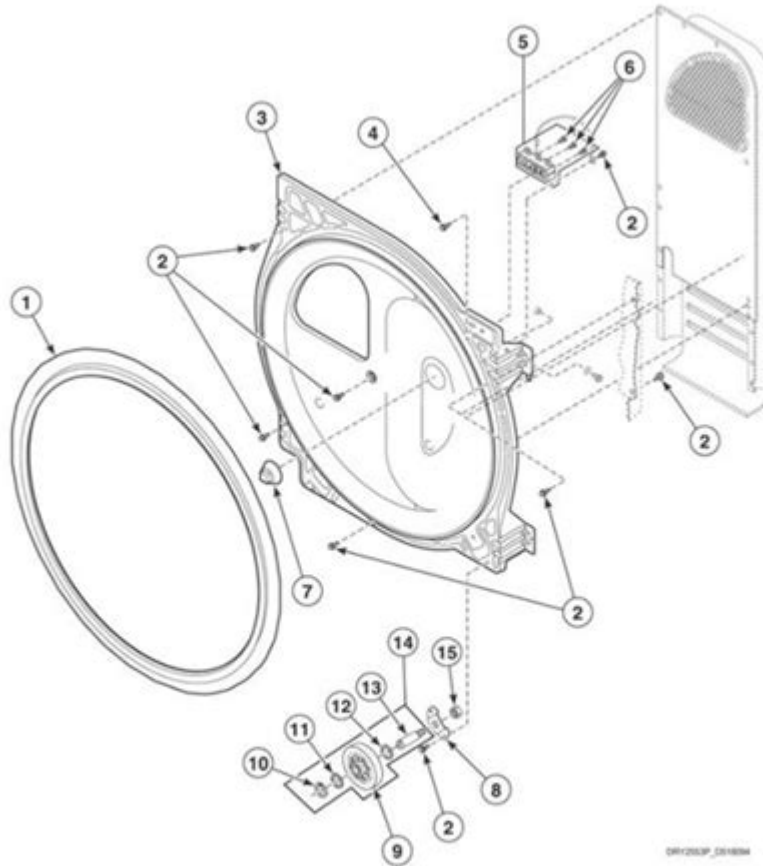


Speed Queen Dryer Parts Manual

Rear Bulkhead, Felt Seal, Cylinder Roller and Terminal Block



Speed Queen dryer parts manual is an essential resource for both homeowners and technicians who are looking to maintain or repair their Speed Queen dryers. Speed Queen is a well-known brand in the laundry appliance industry, renowned for its durability, efficiency, and performance. However, like any appliance, dryers can encounter issues that require part replacements or repairs. This article will provide a comprehensive overview of the Speed Queen dryer parts manual, detailing its significance, how to use it effectively, and tips for maintaining your dryer.

Understanding the Speed Queen Dryer Parts Manual

A Speed Queen dryer parts manual is a detailed guide that contains information about the various components of Speed Queen dryers, including part numbers, diagrams, and troubleshooting tips. This manual is invaluable for several reasons:

- **Identification of Parts:** The manual helps users identify the specific parts needed for repairs or replacements.
- **Diagrams and Schematics:** It includes illustrations that make it easier to understand the dryer's assembly.
- **Part Numbers:** Each component has a unique part number, facilitating easier ordering from suppliers.
- **Troubleshooting Guide:** Many manuals include troubleshooting tips that can help diagnose common problems.

Where to Find the Speed Queen Dryer Parts Manual

Locating the Speed Queen dryer parts manual can be done through several avenues:

1. Official Speed Queen Website

The official Speed Queen website provides resources for users, including downloadable manuals. Here's how to find it:

1. Visit the Speed Queen website.
2. Navigate to the "Support" or "Manuals" section.
3. Search for your specific dryer model.
4. Download the parts manual directly from the site.

2. Authorized Dealers

If you prefer a physical copy or need assistance, contacting an authorized Speed Queen dealer can be beneficial. They often have access to parts manuals and can provide additional support.

3. Online Resources

Several websites offer downloadable manuals and parts lists. Be cautious when using these resources to ensure they are legitimate and up-to-date.

Key Components of a Speed Queen Dryer

Understanding the various components of your Speed Queen dryer is crucial for effective maintenance and repairs. Below are some of the key parts typically found in Speed Queen dryers:

- **Heating Element:** Responsible for generating heat to dry your clothes.
- **Drum Bearing:** Supports the drum and ensures smooth rotation.
- **Thermostat:** Regulates the temperature inside the dryer.
- **Drive Belt:** Connects the motor to the drum, enabling it to spin.
- **Door Switch:** Ensures the dryer does not operate when the door is open.
- **Lint Filter:** Captures lint and debris during the drying cycle.

How to Use the Speed Queen Dryer Parts Manual

Using the Speed Queen dryer parts manual effectively can make the repair and replacement process simpler. Here's a step-by-step guide:

1. Identify the Problem

Before diving into the manual, ascertain what issue your dryer is experiencing. Common problems include:

- Dryer not heating
- Drum not spinning
- Loud noises during operation

2. Locate the Relevant Section

Once you identify the problem, refer to the manual's table of contents or index to find the relevant section. This might include troubleshooting tips or parts related to the specific issue.

3. Review Diagrams

Look at the diagrams provided in the manual. These visuals can help you understand where each part is located within the dryer, making disassembly and reassembly easier.

4. Order Parts

With the part numbers identified, you can order replacements through authorized dealers or online retailers. Always ensure you are purchasing the correct part for your specific model.

5. Follow Repair Instructions

Some manuals include basic repair instructions. While these can be helpful, consider consulting a professional if you are unsure about any steps.

Common Issues and Troubleshooting Tips

The Speed Queen dryer parts manual also serves as a reference for troubleshooting common issues. Here are some frequent problems and their potential solutions:

1. Dryer Not Heating

- Possible Causes:
 - Faulty heating element
 - Defective thermostat
 - Tripped circuit breaker
- Troubleshooting Steps:
 - Check the heating element for continuity.
 - Test the thermostat with a multimeter.
 - Inspect the circuit breaker to ensure it hasn't tripped.

2. Drum Not Spinning

- Possible Causes:
 - Broken drive belt
 - Malfunctioning motor
 - Worn drum bearing
- Troubleshooting Steps:

- Inspect the drive belt for wear and tear.
- Test the motor's functionality.
- Check the drum bearing for signs of damage.

3. Excessive Noise

- Possible Causes:
 - Worn drum rollers
 - Loose hardware
 - Foreign objects in the drum
- Troubleshooting Steps:
 - Examine the drum rollers for wear.
 - Tighten any loose screws or bolts.
 - Remove any objects lodged in the drum.

Maintenance Tips for Your Speed Queen Dryer

Regular maintenance can extend the lifespan of your Speed Queen dryer and prevent the need for repairs. Here are some tips:

- **Clean the Lint Filter:** Always clean the lint filter after each use to ensure proper airflow.
- **Inspect the Venting System:** Check the venting duct for blockages and clean it periodically.
- **Check for Wear:** Regularly inspect parts like the drive belt and drum rollers for signs of wear.
- **Keep the Area Clean:** Ensure the area around the dryer is clean and free from debris.

Conclusion

A **Speed Queen dryer parts manual** is an invaluable tool for anyone looking to maintain or repair their dryer. By understanding the components, utilizing the manual effectively, and following troubleshooting tips, you can ensure your dryer remains in optimal condition. Regular maintenance and timely repairs will not only enhance the performance of your appliance but also extend its lifespan, providing you with reliable service for years to come. Whether you are a DIY enthusiast or a professional technician, familiarizing yourself with the Speed Queen dryer parts manual will empower you to tackle any dryer-related issue confidently.

Frequently Asked Questions

Where can I find the Speed Queen dryer parts manual?

You can find the Speed Queen dryer parts manual on the official Speed Queen website under the 'Support' or 'Resources' section, or by contacting their customer service for assistance.

What common parts are included in the Speed Queen dryer parts manual?

The Speed Queen dryer parts manual typically includes information on essential components such as heating elements, drum rollers, belts, door switches, and thermostats.

How do I use the Speed Queen dryer parts manual for repairs?

To use the Speed Queen dryer parts manual for repairs, locate the specific part you need to replace, refer to the diagrams for disassembly and assembly instructions, and follow the troubleshooting tips provided.

Is there a digital version of the Speed Queen dryer parts manual available?

Yes, a digital version of the Speed Queen dryer parts manual is often available for download on the Speed Queen website or through authorized repair service websites.

Can I order parts directly from the Speed Queen dryer parts manual?

The Speed Queen dryer parts manual may provide part numbers, which you can use to order parts directly from the Speed Queen website or through an authorized parts distributor.

Find other PDF article:

<https://soc.up.edu.ph/19-theme/files?dataid=OgI73-4108&title=easy-way-to-control-alcohol.pdf>

[Speed Queen Dryer Parts Manual](#)

Speed 3 28 ...

Speed 3 28 ... Speed

Speed 4 5 ...

4514:00Speed

-

2011 1

...

Speed 3 31 ...
Speed 3 31 ... Speed 2,173

Speed ...
Speed ...

Origin -
2 Layer1 Size/Speed Units cm Layer Area Width Height
Width ...

Speed ...
Mar 30, 2025 · GPT-4o Speed AI ...

-
360 360 360 ...

Speed 47
Speed 47 Speed 2,220

HDMI High Speed Premium High Speed ...
2 Premium High Speed → HDMI 2.0 HDMI 2.0
HDR HDMI 2.0a

Speed 3 28 ...
Speed 3 28 Speed

Speed 4 5 ...
4 5 14:00 Speed

-
2011 1 ...

Speed 3 31 ...
Speed 3 31 Speed 2,173

Speed ...
Speed ...

Origin -
2 Layer1 Size/Speed Units cm Layer Area Width Height
Width ...

Speed ...
Mar 30, 2025 · GPT-4o Speed AI ...

□ □ □ □ □ □ □ □ □ ...

□□□□□□□□□□□□□□ - □□

360 360 360

...

Speed 47

Speed 47 Speed 2,220

HDMI High Speed Premium High Speed ...

□2□Premium High Speed → HDMI 2.0 □□□□□□□□□□HDMI 2.0□□□□□□□□□□□□□□□□□□□□□□□□

HDR HDMI 2.0a

Find your comprehensive Speed Queen dryer parts manual here! Get detailed diagrams

[Back to Home](#)