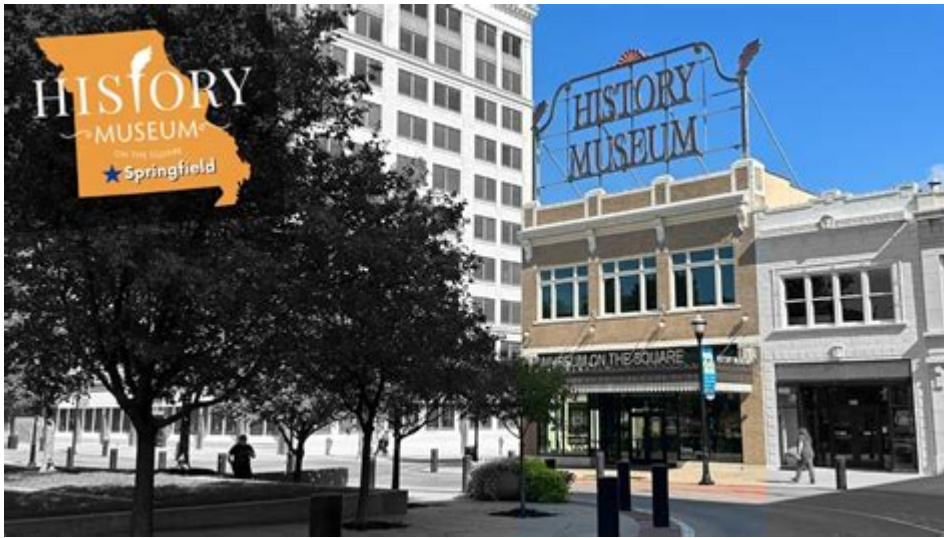


Springfield History Museum Missouri



Springfield History Museum Missouri is a prominent establishment dedicated to preserving and narrating the rich history of Springfield, Missouri. This museum serves as a crucial repository of artifacts, documents, and exhibitions that showcase the city's evolution from a small frontier settlement to a vibrant and diverse community. Nestled in the heart of Springfield, the museum offers an engaging experience that appeals to both locals and visitors alike, making it a cultural landmark worth exploring.

Historical Background

Establishment of the Museum

The Springfield History Museum was established in the early 20th century, with its roots tracing back to local efforts to collect and preserve historical artifacts. The museum officially opened its doors to the public in 2000, but its collection and foundational efforts began much earlier. The museum is situated in the historic Pythian Castle, a structure with its own fascinating backstory, which adds to the overall allure of the museum.

Location and Architecture

The museum is located at 155 Park Central Square, in downtown Springfield. Housed in a building that embodies the architectural style of the early 1900s, the museum itself is a historical treasure. The Pythian Castle, originally built as a home for the Knights of Pythias, boasts significant architectural features, including:

- Intricate stonework
- Stained glass windows

- A grand stairway

Visitors can appreciate not only the exhibits inside but also the historical significance of the building itself.

Exhibitions and Collections

Permanently Featured Exhibits

The Springfield History Museum is known for its diverse collection of permanent exhibits that cover various aspects of Springfield's history. Key exhibitions include:

1. **Pioneer Life:** This exhibit showcases the challenges and triumphs of early settlers in the Springfield area, featuring artifacts from the 19th century that illustrate daily life during this period.
2. **Civil War History:** Given Missouri's critical role in the Civil War, this section highlights the local impact of the conflict, with displays of uniforms, weapons, and personal stories from soldiers and civilians.
3. **Cultural Heritage:** This exhibit celebrates the diverse cultures that have contributed to Springfield's identity over the years, emphasizing the contributions of Native Americans, immigrants, and other groups.
4. **Transportation Evolution:** This section chronicles the development of transportation in and around Springfield, including railroads, streetcars, and the rise of the automobile.

Temporary Exhibits and Events

In addition to its permanent collections, the Springfield History Museum frequently hosts temporary exhibits that focus on specific themes or notable events in local history. These exhibits often feature:

- Art installations
- Photography showcases
- Interactive displays

The museum also organizes events throughout the year, such as lectures, workshops, and community gatherings that encourage public engagement with history.

Educational Programs

School Programs

The Springfield History Museum is committed to education and outreach, offering programs tailored for school groups. These programs typically include:

- Guided tours
- Hands-on activities
- Curriculum-based workshops

Teachers can schedule visits that align with their lesson plans, making history tangible and engaging for students.

Community Engagement

The museum actively fosters community engagement through various initiatives, including:

- Volunteer opportunities
- Membership programs
- Collaborative projects with local organizations

These efforts help to create a sense of ownership and pride among Springfield residents regarding their local history.

Visitor Information

Hours and Admission

The Springfield History Museum is open year-round, though hours may vary by season. Typically, the museum operates:

- Monday to Friday: 10 AM - 5 PM
- Saturday: 10 AM - 4 PM
- Sunday: Closed

Admission fees are generally modest, with discounts available for seniors, students, and children. Special rates may apply for groups and events.

Accessibility Features

The museum is dedicated to providing an inclusive experience for all visitors. Accessibility features include:

- Wheelchair ramps
- Designated parking spaces
- Accessible restrooms

The staff is trained to assist visitors with disabilities, ensuring everyone can enjoy the museum's offerings.

Volunteer and Membership Opportunities

Getting Involved

The Springfield History Museum welcomes volunteers who are passionate about history and community service. Opportunities for volunteering include:

- Assisting with events
- Conducting research
- Guiding tours

Volunteers gain valuable experience, meet like-minded individuals, and contribute to preserving Springfield's heritage.

Membership Benefits

Becoming a member of the Springfield History Museum provides numerous benefits, such as:

- Free admission for a year
- Invitations to exclusive events
- Discounts at the museum store

Membership supports the museum's mission and helps sustain its educational and preservation efforts.

Conclusion

The Springfield History Museum Missouri serves as a vital institution for preserving and interpreting the rich tapestry of Springfield's past. From its engaging exhibits to its commitment to education and community involvement, the museum plays a pivotal role in fostering a deeper understanding of local history. Whether you're a lifelong resident or a first-time visitor, the Springfield History Museum offers a wealth of knowledge and a unique opportunity to connect with the stories that have shaped this remarkable city. As Springfield continues to grow and evolve, the museum remains a steadfast guardian of its history, ensuring that future generations can appreciate the legacy of their community.

Frequently Asked Questions

What is the significance of the Springfield History Museum in Missouri?

The Springfield History Museum is significant as it showcases the rich history and cultural heritage of Springfield and the surrounding region, highlighting local events, notable figures, and artifacts.

What types of exhibits can visitors expect to see at the Springfield History Museum?

Visitors can expect to see a variety of exhibits including local historical artifacts, photographs, interactive displays, and themed exhibitions that cover different aspects of Springfield's history.

Are there any special events held at the Springfield History Museum?

Yes, the museum frequently hosts special events such as lectures, workshops, and family-friendly activities that focus on local history and culture.

What are the museum's hours of operation?

The Springfield History Museum typically operates from 10 AM to 5 PM, Tuesday through Saturday, but it's best to check their official website for any changes or special holiday hours.

Is there an admission fee to visit the Springfield History Museum?

Yes, there is usually a nominal admission fee to visit the Springfield History Museum, but they may offer free admission on certain days or for specific groups, like students or seniors.

Can visitors participate in guided tours at the Springfield History Museum?

Yes, visitors can participate in guided tours, which are often available at scheduled times or can be arranged for groups, providing deeper insights into the museum's collections and local history.

What age groups is the Springfield History Museum suitable for?

The Springfield History Museum is suitable for all age groups, with exhibits and programs designed to engage children, families, and adults alike.

Does the Springfield History Museum have educational programs for schools?

Yes, the museum offers educational programs for schools, including field trips and hands-on activities that align with curriculum standards, promoting learning about local history.

How can one support the Springfield History Museum?

Individuals can support the Springfield History Museum through donations, membership programs, volunteering, or by participating in fundraising events organized by the museum.

Find other PDF article:

<https://soc.up.edu.ph/55-pitch/pdf?dataid=ucJ42-4463&title=spt-medical-abbreviation-physical-therapy.pdf>

Springfield History Museum Missouri

Springfield - 00

Springfield 50 ...

SpringField - □□

May 1, 2025 · Fabio “Microeconomics for the Critical Mind”

□□□□□□□□□□□□□□□□□□ - □□

“Trapdoor Rifle” ... “Trapdoor Rifle” ...

□□□□□□□□□□□□□□□□□□□□ - □□

$\text{Enfeld} \oplus \tilde{\text{e}}\text{an} = \text{feld}$

□□□□□□□□□□□□□□ - □□

1. [App Store](#) The Simpsons Trapped Out [App Store](#)™: Springfield [App Store](#)
2. [2012](#) “[App Store](#)” ...

□□□□□ (Springfield College)□□□□□□□□□? - □□

Springfield College 1885 USNEWS 2015 ...

SpringField - ☐

PhD student in Economics 228 45,520

.300 口径 7.62mm 霰弹枪 - 霰

霰弹枪 M1 霰弹 Springfield M1903 霰弹枪 .308 霰弹枪

霰弹枪 - 霰

Jan 13, 2023 · Springfield 霰弹枪 spring 霰弹枪 field 霰弹枪 “霰”霰弹枪

MarxianEconomics - 霰

MarxianEconomics 霰弹枪 Springfield · 202 霰

霰弹枪 **Springfield** 霰弹枪 - 霰

霰弹枪 Springfield 霰弹枪 霰弹枪 50 霰弹枪 霰弹枪 ...

SpringField - 霰

May 1, 2025 · Fabio “Microeconomics for the Critical Mind” 霰弹枪 霰弹枪 ...

霰弹枪 - 霰

“霰弹枪”Trapdoor Rifle 霰弹枪 “霰弹枪”霰弹枪 ...

霰弹枪 - 霰

霰弹枪 Enfeld 霰弹枪 éan 霰弹枪 feld 霰弹枪 éan= 霰弹枪 feld= 霰弹枪 ...

霰弹枪 - 霰

1. 霰弹枪 App Store The Simpsons Trapped Out 霰弹枪 霰弹枪™: Springfield 霰弹枪 App Store 霰弹枪
2. 霰弹枪 2012 霰弹枪 “霰弹枪” ...

霰弹枪 (*Springfield College*) 霰弹枪? - 霰

霰弹枪 Springfield College 霰弹枪 1885 霰弹枪 USNEWS 霰弹枪 2015 霰弹枪 ...

SpringField - 霰

PhD student in Economics 霰弹枪 228 霰弹枪 45,520 霰弹枪

.300 口径 7.62mm 霰弹枪 - 霰

霰弹枪 M1 霰弹 Springfield M1903 霰弹枪 .308 霰弹枪

霰弹枪 - 霰

Jan 13, 2023 · Springfield 霰弹枪 spring 霰弹枪 field 霰弹枪 “霰”霰弹枪

MarxianEconomics - 霰

MarxianEconomics 霰弹枪 Springfield · 202 霰

Explore the rich heritage of the Springfield History Museum in Missouri. Discover fascinating exhibits and events that bring local history to life. Learn more!

[Back to Home](#)