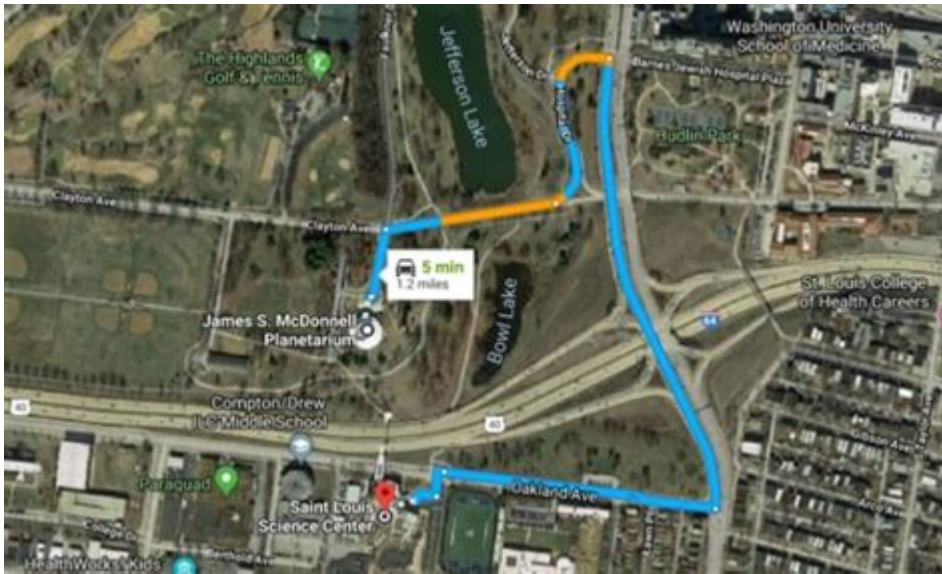


# St Louis Science Center Parking



St. Louis Science Center parking can sometimes be a concern for visitors eager to explore the fascinating exhibits and activities the center has to offer. Located in St. Louis, Missouri, this interactive science museum is a hub for learning and entertainment, attracting thousands of visitors each year. To ensure a smooth and enjoyable visit, it is important to understand the parking options available, the costs involved, and tips for making the most of your experience.

## Overview of the St. Louis Science Center

The St. Louis Science Center is a premier destination for families, educators, and anyone interested in science and technology. It features over 700 interactive exhibits, a planetarium, IMAX theater, and numerous educational programs. The center is designed to engage visitors of all ages in the wonders of the scientific world. However, before diving into the myriad of exhibits, it's critical to navigate the parking logistics effectively.

# Parking Options at the St. Louis Science Center

When planning your visit to the St. Louis Science Center, understanding the parking options available can help streamline your trip. Here are the primary parking facilities and their details:

## 1. Main Lot

- Location: The Main Lot is conveniently located adjacent to the Science Center entrance.
- Capacity: It has a large capacity, which typically accommodates most visitors.
- Cost: Parking in the Main Lot is generally free, making it an attractive option for families and groups.

## 2. Overflow Parking

- Location: In cases where the Main Lot is full, overflow parking is available in nearby designated areas.
- Shuttle Service: During peak seasons or busy events, shuttle services may run from overflow lots to the Science Center entrance.
- Cost: Like the Main Lot, overflow parking is also free.

## 3. Accessible Parking

- Location: Accessible parking spaces are available near the entrance of the Main Lot for visitors with disabilities.
- Signage: These spaces are clearly marked and comply with ADA guidelines.

# Parking Tips for Your Visit

To ensure a hassle-free experience at the St. Louis Science Center, consider the following parking tips:

1. **Arrive Early:** On weekends and during holidays, the parking lots can fill up quickly. Arriving early increases your chances of securing a good parking spot.
2. **Check Event Schedules:** If there are special events or exhibitions happening, parking may be busier than usual. Check the Science Center's website for any announcements regarding events.
3. **Utilize Public Transportation:** If possible, consider taking public transportation. The Science Center is accessible via MetroLink, which can alleviate parking concerns.
4. **Be Mindful of Road Construction:** Occasionally, roadwork may affect access to the Science Center. Check local news and traffic updates before your visit.

## What to Expect Upon Arrival

After successfully navigating parking, visitors can expect a welcoming and engaging environment inside the St. Louis Science Center. Here's what to anticipate:

### 1. Entrance and Ticketing

Upon entering, guests will find a ticketing area. While general admission is often free, some special

exhibitions and IMAX films may require tickets. It's advisable to check the Science Center's website for current pricing and any special promotions.

## **2. Visitor Services**

- Information Desk: Upon arrival, stop by the information desk for maps, schedules, and any questions you may have.
- Lost and Found: For those worried about losing personal items, the center has a lost and found service.

## **Accessibility and Amenities**

The St. Louis Science Center is designed to be inclusive for all visitors. Here are some of the amenities provided:

### **1. Wheelchair Accessibility**

The center is wheelchair accessible, with ramps and elevators throughout the building. Wheelchairs are also available for rent on a first-come, first-served basis.

### **2. Family Amenities**

- Changing Stations: Family restrooms equipped with changing stations are available throughout the center.
- Stroller Rentals: For families with young children, stroller rentals may be available to make navigating the exhibits easier.

# Nearby Attractions and Parking Considerations

If you're planning to visit nearby attractions after the St. Louis Science Center, it's beneficial to know about parking options at those locations as well. Here are a few popular attractions and their parking conditions:

## 1. Forest Park

- Parking: Forest Park offers free parking in various lots. However, some areas may have time limits or require permits during busy seasons.
- Attractions: The park houses several museums, walking trails, and the St. Louis Zoo.

## 2. The Missouri History Museum

- Parking: Free parking is available at the Missouri History Museum. The museum is also within walking distance from the Science Center.
- Exhibits: Visitors can explore the rich history of Missouri and its cultural heritage.

## 3. The St. Louis Art Museum

- Parking: The St. Louis Art Museum also provides free parking. It is located within Forest Park, making it a convenient stop after the Science Center.
- Collections: The museum features an impressive collection of art from various periods and cultures.

## Conclusion

In summary, navigating **St. Louis Science Center parking** is relatively straightforward, with ample free parking options available for visitors. Arriving early, being mindful of events, and considering public transportation can enhance your experience. Once inside, families and guests can enjoy a wealth of interactive exhibits and educational programs designed to inspire curiosity and a love for science. With nearby attractions also offering free parking, your day in St. Louis can be both enjoyable and budget-friendly. Plan your visit today and immerse yourself in the wonders of science!

## Frequently Asked Questions

### Is there parking available at the St. Louis Science Center?

Yes, there is ample parking available at the St. Louis Science Center, including both free and paid options.

### How much does it cost to park at the St. Louis Science Center?

Parking at the St. Louis Science Center is usually free, but special events may incur a parking fee.

### Are there any designated accessible parking spaces at the St. Louis Science Center?

Yes, the St. Louis Science Center provides designated accessible parking spaces for visitors with disabilities.

### What are the hours of the parking lot at the St. Louis Science Center?

The parking lot at the St. Louis Science Center is generally open during the same hours as the center itself, but it's best to check the official website for any changes.

# Can I park an oversized vehicle at the St. Louis Science Center?

Yes, the St. Louis Science Center can accommodate oversized vehicles, but it's advisable to arrive early as spaces may be limited.

# Is there valet parking available at the St. Louis Science Center?

No, the St. Louis Science Center does not offer valet parking; visitors are encouraged to use the self-parking facilities.

Find other PDF article:  
<https://soc.up.edu.ph/34-flow/pdf?dataid=eZX95-0790&title=jealous-sister-in-law-psychology.pdf>

## St Louis Science Center Parking

st\*st -  
ST ICU  
...

st\*st -  
ST\*ST ST “” ST  
“” ...

EasyPLCST -  
Oct 27, 2024 · STIEC61131-3PLCPLCSCLPLCST  
...

ST-LINK - STM32/STM8  
Jan 22, 2025 · ST-LINK

Steam CAPTCHA ...  
APTCHA  
1 ...

ST-Link - MM32 MCU  
Jun 11, 2025 · 1mm32 (1) (2)mm32ST-Link2ST-Link (1)  
ST-Link (2)

4 -  
4ST\*ST±12% 5

steamsteam -

Sep 5, 2024 · Steam 1. Steam

## steam -

Nov 13, 2024 · <https://store.steampowered.com/...>

[illegible]

Aug 9, 2020 · ST Special Treatment “ ” ...

[illegible][illegible]

|        |    |   |    |        |   |    |
|--------|----|---|----|--------|---|----|
| □□□□□□ | st | * | st | □□□□□□ | - | □□ |
|--------|----|---|----|--------|---|----|

ST\*ST ST “ ” ST ...

# EasyPLCST -

Oct 27, 2024 · ST IEC61131-3 PLC PLC SCL PLC ST  
...

ST-LINK - STM32/STM8 - ST MCU ...

Jan 22, 2025 · ST-LINK

**Steam**  **CAPTCHA**  ...

[illegible]

## Discover the best St. Louis Science Center parking options

[Back to Home](#)