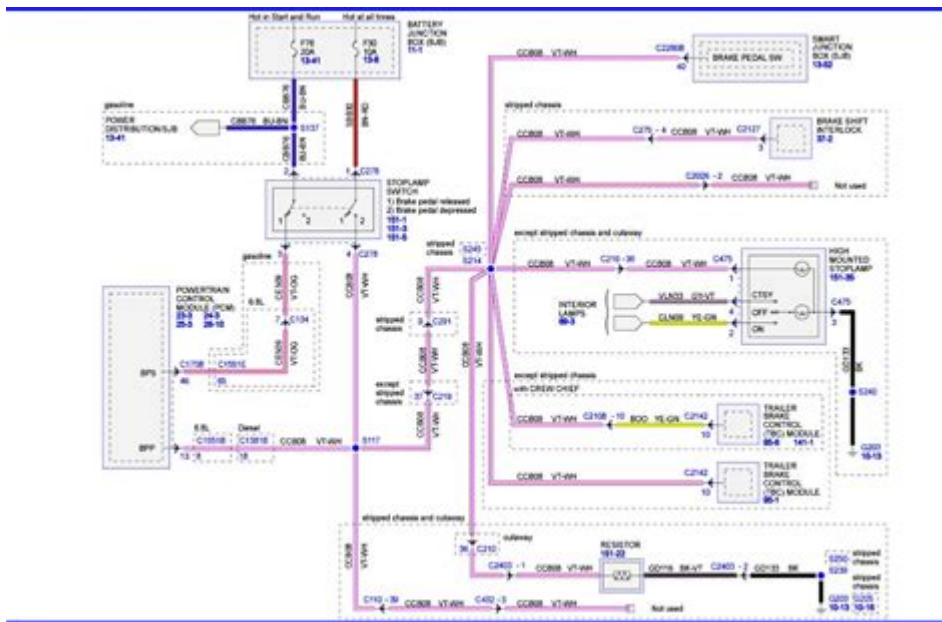


# Starcraft Bus Wiring Diagram



**Starcraft bus wiring diagram** is an essential aspect for anyone working on or maintaining Starcraft buses. Whether you are an experienced mechanic, a technician, or a DIY enthusiast, understanding the wiring diagram of a Starcraft bus can make troubleshooting, repairs, and modifications significantly easier. A bus wiring diagram provides a visual representation of the electrical system, including the connections and functions of various components. This article delves into the critical elements of a Starcraft bus wiring diagram, its components, functions, and how to interpret it effectively.

## Understanding Wiring Diagrams

### What is a Wiring Diagram?

A wiring diagram is a detailed illustration that showcases the electrical connections and layout of a vehicle's components. It serves as a blueprint for the electrical system, allowing technicians to understand how various parts are interconnected.

### Importance of Wiring Diagrams

Wiring diagrams are crucial for several reasons:

- **Troubleshooting:** They help identify issues in the electrical system by showing how components are wired together.
- **Maintenance:** Regular checks can be performed using the diagram to ensure all systems are functioning correctly.

- Modifications: For custom installations or upgrades, having a clear diagram helps in planning and executing changes without damaging existing systems.

## **Components of a Starcraft Bus Wiring Diagram**

A Starcraft bus wiring diagram includes various components that represent the bus's electrical system. Understanding these components is essential for effective troubleshooting and maintenance.

### **Power Supply**

- Batteries: The primary source of power for a bus, typically lead-acid or lithium-ion batteries.
- Alternator: Charges the batteries while the bus is running, ensuring a constant power supply.

### **Control Systems**

- Fuses and Circuit Breakers: Protect the electrical circuits from overload by interrupting the flow of electricity when necessary.
- Relays: Act as switches that control the power to different components based on input signals.

### **Lighting Systems**

- Headlights and Taillights: Essential for visibility and safety.
- Interior Lights: Provide illumination within the bus for passenger comfort and safety.

### **Accessory Components**

- Heating and Air Conditioning: These systems require specific wiring configurations for proper functionality.
- Audio and Video Systems: Entertainment systems often have dedicated wiring for speakers, screens, and controls.

## **Interpreting the Wiring Diagram**

Understanding how to read a wiring diagram is vital for effectively using it. Here are some key elements to look for:

## Symbols and Notations

- Lines: Represent electrical connections; solid lines are typically for wires, while dashed lines may indicate signal pathways.
- Symbols: Each component has a designated symbol, such as a rectangle for a battery or a circle for a light bulb. Familiarizing yourself with these symbols is crucial.

## Color Codes

- Wire Colors: Different colors are used to signify different functions. For example:
  - Red: Power supply
  - Black: Ground
  - Green: Ground or chassis
  - Blue: Signal wires

## Reading the Diagram

1. Locate the Power Source: Identify where the power enters the system, usually from the battery or alternator.
2. Trace the Circuits: Follow the lines to see how power flows to different components.
3. Identify Components: Look for symbols that represent various parts and understand their function within the system.
4. Check Connections: Ensure that all connections are properly illustrated, as faulty wiring can lead to system failures.

## Common Issues in Starcraft Bus Wiring

Understanding common wiring issues can help in quick troubleshooting. Here are some frequent problems:

### Short Circuits

- Caused by damaged insulation or exposed wires, leading to unintended connections that can blow fuses or damage components.

### Grounding Issues

- Poor grounding can lead to electrical malfunctions, such as flickering lights or non-operational equipment.

## **Corroded Connections**

- Over time, connections may corrode, leading to poor conductivity and potential failures in electrical systems.

## **Steps for Repairing Wiring Issues**

If you encounter wiring issues, follow these steps for effective troubleshooting and repairs:

### **Step 1: Safety First**

- Always disconnect the battery before working on any electrical system to prevent shocks or accidental shorts.

### **Step 2: Inspect the Wiring**

- Visually inspect wires for any signs of damage, such as fraying, discoloration, or corrosion.

### **Step 3: Test the Components**

- Use a multimeter to check the continuity of wires and the functionality of components like fuses and relays.

### **Step 4: Repair or Replace Wires**

- If you find damaged wires, either repair them using heat shrink tubing and electrical tape or replace them entirely.

### **Step 5: Reconnect and Test**

- Once repairs are made, reconnect the battery and test the system to ensure everything is functioning correctly.

## **Conclusion**

The Starcraft bus wiring diagram is an invaluable tool for anyone involved in the maintenance and repair of these vehicles. By understanding the components, how to read the wiring diagram, and recognizing common issues, you can effectively troubleshoot and ensure the safety and reliability of the bus's electrical systems. Regular inspections and a solid understanding of

electrical principles will contribute significantly to the longevity and performance of a Starcraft bus. With the right knowledge and tools at your disposal, managing the electrical system of a Starcraft bus can be a straightforward task.

## **Frequently Asked Questions**

### **What is a Starcraft bus wiring diagram used for?**

A Starcraft bus wiring diagram is used to illustrate the electrical system layout and connections in Starcraft buses, helping technicians and electricians troubleshoot and maintain the vehicle's electrical components.

### **Where can I find a reliable Starcraft bus wiring diagram?**

Reliable Starcraft bus wiring diagrams can typically be found in the vehicle's service manual, on the manufacturer's website, or through authorized dealers and repair shops specializing in Starcraft vehicles.

### **What are the common issues that can be diagnosed using a Starcraft bus wiring diagram?**

Common issues include electrical shorts, faulty connections, inoperative lights, and problems with the bus's electronic control systems, all of which can be diagnosed by referencing the wiring diagram.

### **Can I modify the wiring based on the Starcraft bus wiring diagram?**

Yes, modifications can be made, but it is essential to ensure that any changes conform to safety standards and do not interfere with the bus's electrical systems. Consulting a professional is recommended.

### **How do I interpret the symbols used in a Starcraft bus wiring diagram?**

The symbols in a wiring diagram represent various electrical components such as switches, fuses, and connectors. A legend or key is typically provided with the diagram to assist in understanding these symbols.

### **What tools do I need to work with a Starcraft bus wiring diagram?**

You will need basic electrical tools such as a multimeter, wire strippers, crimping tools, and possibly a soldering iron, along with the wiring diagram itself for reference.

Find other PDF article:

<https://soc.up.edu.ph/63-zoom/pdf?dataid=jFQ34-3310&title=types-of-evidence-worksheet-answers.pdf>

## Starcraft Bus Wiring Diagram

### *SC2 Forums*

Campaign Discussion Discuss the single player campaign, missions, and story for StarCraft II.

### *Starcraft 2 is blackscreen with sound with Windows 11, 24H2*

Apr 10, 2025 · I just did the windows 11, version 24H2 update and now SC2 is just a black screen. I can hear the game running, but can't see. Went through windows support and turned ...

### StarCraft II Performance - General Discussion - SC2 Forums

Oct 18, 2024 · I recently started playing StarCraft II (better late than never) and I'm having issues with fps drops below 30 during large battles. I would like some tips from the veteran players in ...

### *11 00 00000 00000 - 00 00 - Starcraft Forums*

Jul 11, 2023 · 1-Windows 00 0000 Exploit Protection 0000 000. 2-0000 00 3-00000 0000 000 00000 4-00 0000 StarCraft.exe 00000. 5-00 ...

### *New starcraft decks - Community Discussion - Hearthstone Forums*

Jan 23, 2025 · Just curious, anyone else hating these new SC decks? Ive played a few games since the patch yesterday and lost them all to these new decks. Some of the cards ive seen ...

### **Starcraft Forums**

0 0000 00000 000 0000 000000000 Discourse 00 00000 0000. JavaScript 0 00000 00 0 00 000 0000.

### *0000 0000 0000..0 0000000 000 0000?*

Jan 9, 2025 · 000000. 0000000000. 00 000 00 000 00000 00000 00 00 0 00 000 0000, 000 000 00000 00 00 00 0 0000 00000 000 ...

### ScmDraft 2 - Alternative starcraft map editor

Jul 10, 2019 · What is it: ScmDraft is an un-official map editor for StarCraft. It supports all map-making features available using the default map editor (StarEdit), but also supports additional ...

### *00 00 00000 0000 0 00 - 00 00 - Starcraft Forums*

Mar 22, 2023 · 000000. 000000000 00000000 00 JAIDE0000. 00 000000 00 00000000. 0000 00000 00000 00000 0000000 00000 0000 ...

### **You cannot enter a matchmaking queue because your status has ...**

Apr 11, 2020 · Yes, it may be because I quit the game when I saw the level is 90 (as in I won't get any XP for the match), but what do I do about it now?

### *SC2 Forums*

Campaign Discussion Discuss the single player campaign, missions, and story for StarCraft II.

### Starcraft 2 is blackscreen with sound with Windows 11, 24H2

Apr 10, 2025 · I just did the windows 11, version 24H2 update and now SC2 is just a black screen. I can hear the game running, but can't see. Went through windows support and turned ...

### StarCraft II Performance - General Discussion - SC2 Forums

Oct 18, 2024 · I recently started playing StarCraft II (better late than never) and I'm having issues with fps drops below 30 during large battles. I would like some tips from the veteran players in ...

### 11 00 00000 00000 - 00 00 - Starcraft Forums

Jul 11, 2023 · 1-Windows 00 0000 Exploit Protection 0000 000. 2-0000 00 3-00000 0000 000 00000 4-00 0000 StarCraft.exe 00000. 5-00 ...

### **New starcraft decks - Community Discussion - Hearthstone Forums**

Jan 23, 2025 · Just curious, anyone else hating these new SC decks? Ive played a few games since the patch yesterday and lost them all to these new decks. Some of the cards ive seen ...

### Starcraft Forums

0 0000 00000 000 0000 000000000 Discourse 00 00000 0000. JavaScript 0 00000 00 0 00 000 0000.

### 0000 0000 0000..0 0000000 000 0000?

Jan 9, 2025 · 000000. 000000000. 00 000 00 000 0000 0000 00 00 0 00 000 0000, 000 000 0000 00 00 00 0 0000 0000 000 ...

### ScmDraft 2 - Alternative starcraft map editor

Jul 10, 2019 · What is it: ScmDraft is an un-official map editor for StarCraft. It supports all map-making features available using the default map editor (StarEdit), but also supports additional ...

### 00 00 0000 000 0 00 - 00 00 - Starcraft Forums

Mar 22, 2023 · 000000. 00000000 00000000 00 JAIDE0000. 00 00000 00 0000000. 000 0000 0000 0000 0000 000000 0000 000 ...

### **You cannot enter a matchmaking queue because your status has ...**

Apr 11, 2020 · Yes, it may be because I quit the game when I saw the level is 90 (as in I won't get any XP for the match), but what do I do about it now?

Unlock the secrets of your Starcraft bus with our detailed wiring diagram. Learn more about installation

[Back to Home](#)