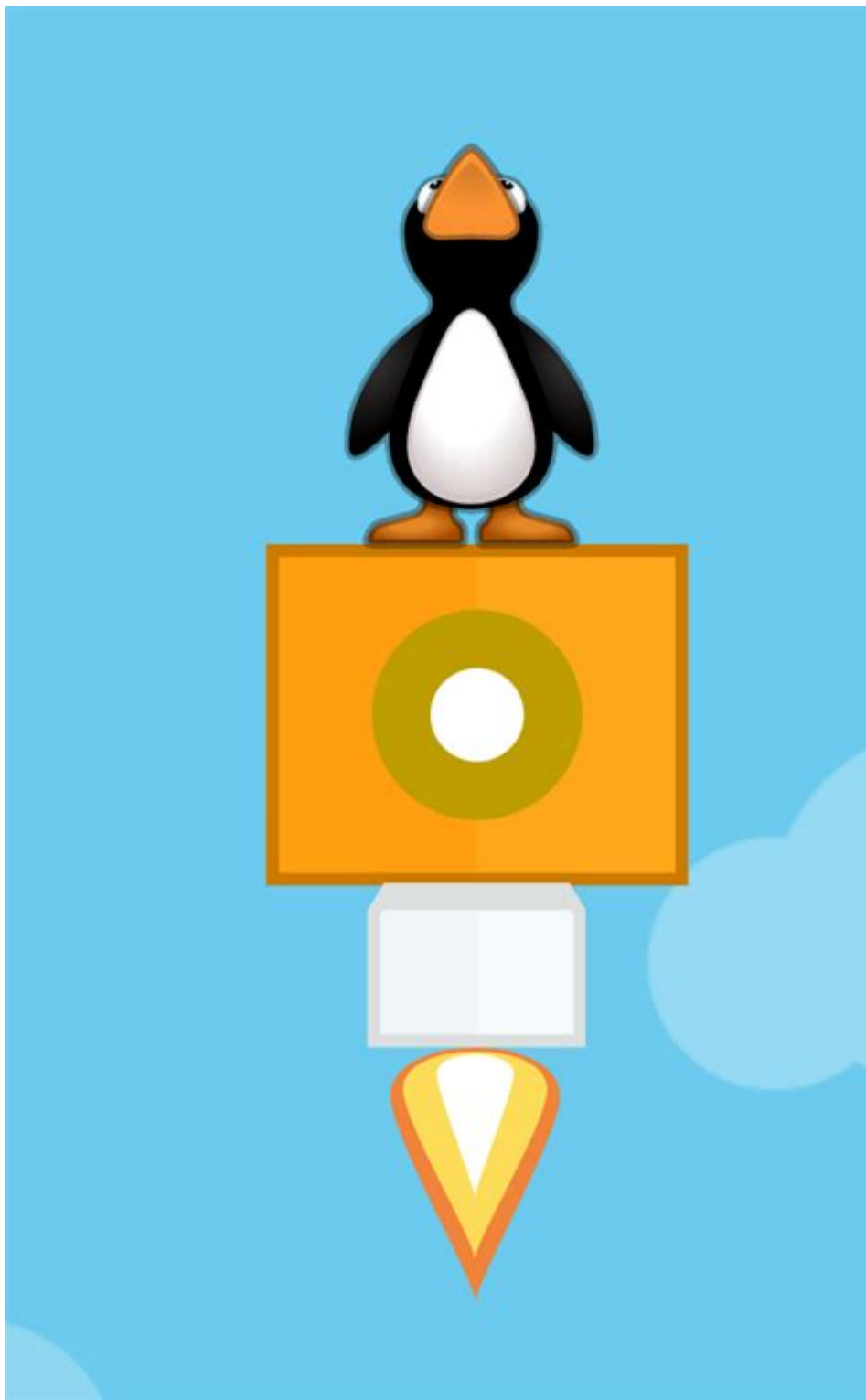


St Math Jiji Image



ST Math Jiji Image is a prominent visual representation associated with ST Math, an educational program designed to enhance mathematical understanding and problem-solving skills among students. At the heart of this program is Jiji, a playful penguin character who guides learners through a series of engaging and interactive math challenges. This article explores the significance of the ST Math Jiji image, its role in education, how it enhances learning experiences, and its impact on students' mathematical

proficiency.

Understanding ST Math

ST Math is an innovative program developed by MIND Research Institute, aimed at providing students with a deep understanding of mathematics through visual learning. The program employs a unique, game-based approach that emphasizes conceptual understanding over rote memorization.

The Role of JiJi

JiJi, the animated penguin, serves as a crucial component of the ST Math experience. The character is not only appealing to students but also embodies the program's principles of exploration and perseverance. Here are some key aspects of JiJi's role:

- Visual Representation: JiJi is visually engaging and serves as a guide that helps learners navigate through various math concepts.
- Encouragement: The character provides motivational cues, encouraging students to think critically and solve problems independently.
- Fostering Engagement: JiJi's playful nature keeps students engaged, making math less intimidating and more enjoyable.

The Importance of Visual Learning in Mathematics

Visual learning is an essential pedagogical approach, especially in mathematics, where abstract concepts can often be difficult for students to grasp. The ST Math program leverages this approach by using visual representations to convey mathematical ideas.

Benefits of Visual Learning

1. Enhanced Understanding: Visuals can simplify complex problems, making them easier to comprehend.
2. Memory Retention: Students often retain information better when it is presented visually, allowing for longer-lasting knowledge.
3. Increased Engagement: Interactive visuals maintain student interest and motivation, encouraging them to explore further.
4. Problem-Solving Skills: Visual representations help students develop critical thinking and problem-solving skills as they analyze and interpret information.

How the JiJi Image Supports Learning

The JiJi image is not just a cute mascot; it plays a significant role in enhancing the educational experience. Here's how:

Interactive Learning Environment

The ST Math platform creates an interactive learning environment where students can explore math concepts at their own pace. JiJi's presence throughout the program encourages students to engage with the material actively.

- **Game-Based Learning:** The interactive games featuring JiJi motivate students to participate and practice math skills in a fun way.
- **Instant Feedback:** JiJi provides immediate feedback, allowing students to learn from their mistakes and understand the correct solutions.

Personalized Learning Journey

Every learner is unique, and JiJi's design allows for a personalized experience. The program adapts to each student's learning pace and style.

- **Adaptive Learning Paths:** The platform adjusts the difficulty of challenges based on individual performance.
- **Encouraging Persistence:** JiJi's character teaches resilience as students encounter challenges, emphasizing that persistence is key to overcoming obstacles.

Impact of ST Math JiJi on Student Performance

Research has shown that the ST Math program, with JiJi as a central character, has a positive impact on student performance in mathematics.

Statistical Evidence

Several studies and assessments have indicated improvements in student outcomes:

- **Increased Math Proficiency:** Students using ST Math have shown significant gains in math proficiency scores compared to their peers in traditional learning environments.
- **Higher Engagement Levels:** Schools implementing ST Math report higher levels of student engagement and enthusiasm for learning math.
- **Closing Achievement Gaps:** The program has been particularly effective in helping underrepresented and at-risk student populations improve their math skills.

Implementing ST Math in Classrooms

For educators looking to integrate ST Math into their teaching, there are several strategies they can employ to maximize the program's effectiveness.

Tips for Educators

1. Incorporate Regular Use: Schedule regular sessions for students to engage with ST Math, ensuring consistent practice.
2. Monitor Progress: Use the platform's analytics to track student progress and identify areas where additional support may be needed.
3. Encourage Collaboration: Facilitate group discussions around challenges faced in ST Math to promote collaborative problem-solving.
4. Use JiJi as a Motivator: Leverage JiJi's character to create excitement around math challenges, perhaps through competitions or rewards for achievements.

Parental Involvement and Support

The role of parents in supporting their child's learning with ST Math cannot be underestimated.

Ways Parents Can Help

- Engage with the Program: Encourage children to share their experiences and challenges faced in ST Math.
- Create a Positive Learning Environment: Set aside time and space for children to work on their math skills without distractions.
- Celebrate Achievements: Acknowledge milestones and progress, reinforcing the importance of persistence and effort.

Conclusion

In conclusion, the ST Math JiJi image represents more than just a character in an educational program; it symbolizes an innovative approach to teaching mathematics. By fostering a visual learning environment, promoting engagement, and encouraging perseverance, JiJi helps students develop a deeper understanding of mathematical concepts. As educators and parents continue to embrace the ST Math program, the combined efforts can significantly enhance student learning outcomes and foster a lifelong love for mathematics. The journey of learning math becomes not just a challenge, but an adventure with JiJi leading the way.

Frequently Asked Questions

What is ST Math JiJi and how does it support math learning?

ST Math JiJi is an interactive educational program designed to help students understand mathematical concepts through visual learning. It uses a penguin character named JiJi to guide students through various math challenges, promoting problem-solving skills and critical thinking.

How can teachers integrate ST Math JiJi images into their lesson plans?

Teachers can use ST Math JiJi images as visual aids to illustrate math concepts during lessons. They can display JiJi's problem-solving scenarios on a projector or include them in digital presentations to engage students and make learning more interactive.

What are the benefits of using JiJi images for students with learning disabilities?

JiJi images provide a visual and engaging way for students with learning disabilities to grasp complex mathematical concepts. The visual representation helps to break down problems into manageable parts, making it easier for these students to understand and retain information.

Are there any recent updates to the ST Math JiJi program that enhance its features?

Yes, recent updates to the ST Math JiJi program include improved graphics, additional interactive levels, and enhanced tracking features for teachers to monitor student progress. These updates aim to create a more immersive learning experience.

Where can parents find resources or images related to ST Math JiJi for home use?

Parents can find ST Math JiJi resources on the official ST Math website or through their child's school portal. Many schools provide access to additional materials, including printable JiJi images and at-home activity guides to support math learning outside the classroom.

Find other PDF article:

<https://soc.up.edu.ph/18-piece/Book?ID=laV42-2641&title=dna-replication-worksheet-answers.pdf>

St Math Jiji Image

st*st -

ST ICU ...

st*st -

ST*ST ST “” ST ...

EasyPLCST -

Oct 27, 2024 · STIEC61131-3PLCPLCSCLPLCST ...

ST-LINK - STM32/STM8 - ST MCU ...

Jan 22, 2025 · ST-LINK

Steam CAPTCHA
APTCHA

st*st -
ST

st*st -
ST*ST ST “”

EasyPLCST
Oct 27, 2024 · STIEC61131-3PLC

ST-LINK - ST...
Jan 22, 2025 · ST-LINK

Steam CAPTCHA
APTCHA

Discover how to effectively use the ST Math Jiji image to enhance learning. Unlock engaging strategies and tips for implementing this powerful educational tool. Learn more!

[Back to Home](#)