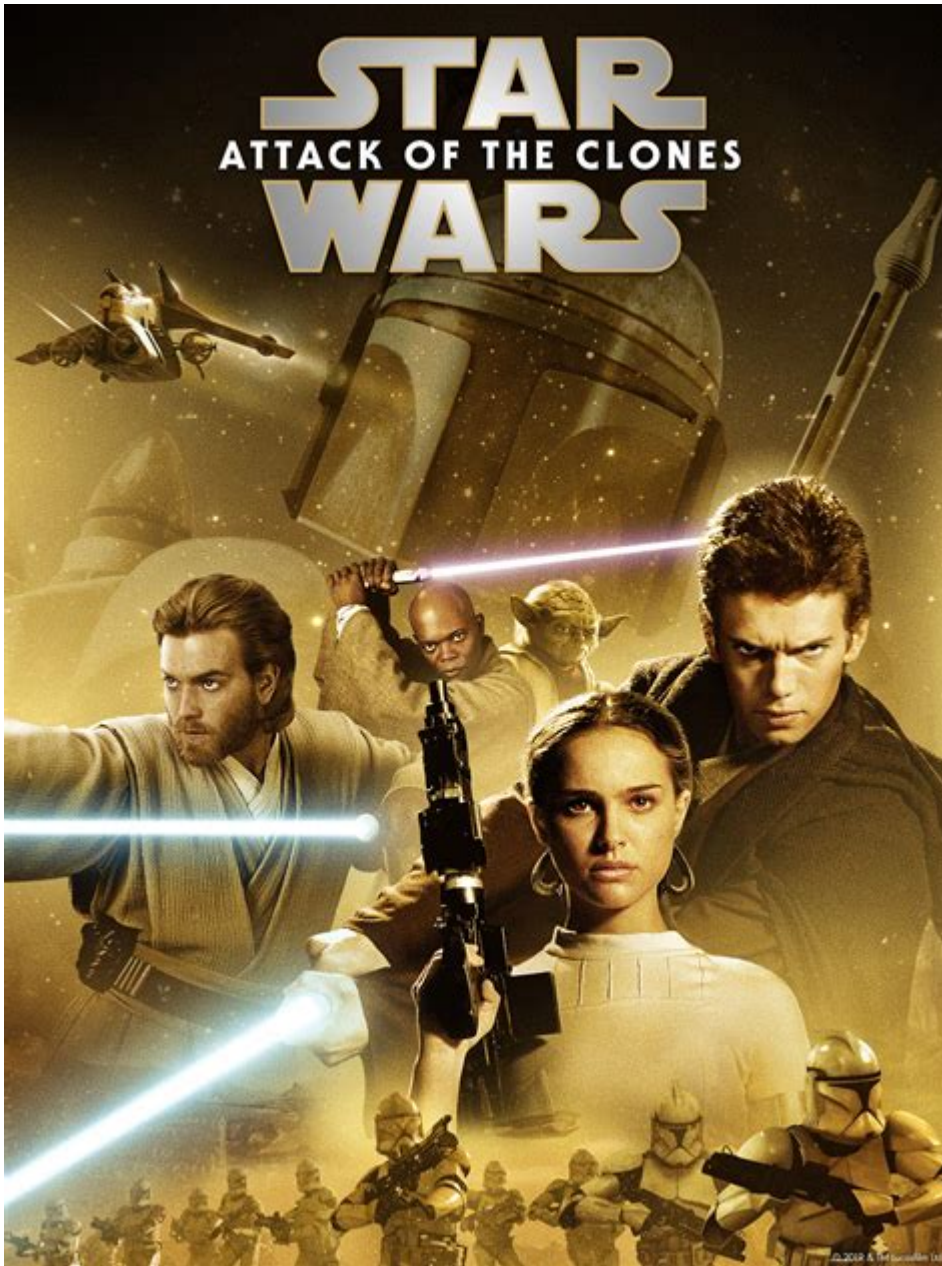


Stars Wars Attack Of The Clones



Star Wars: Attack of the Clones is the second installment in the Star Wars prequel trilogy, directed by George Lucas and released in 2002. Set ten years after the events of The Phantom Menace, it explores the burgeoning conflict that leads to the Clone Wars, a pivotal moment in the Star Wars saga. The film dives deep into themes of love, betrayal, and political intrigue, while also introducing new characters and expanding on the galaxy's lore. This article provides an in-depth look at the film, its characters, themes, and its place within the Star Wars universe.

Plot Overview

Star Wars: Attack of the Clones begins with the galaxy in turmoil. The Republic is facing

increased unrest due to the separatist movement led by former Jedi Count Dooku. Amidst this backdrop, Padmé Amidala, the former queen of Naboo, becomes the target of assassination attempts. To protect her, Jedi Knight Obi-Wan Kenobi and his apprentice, Anakin Skywalker, are assigned to guard her.

As the story unfolds, Anakin and Padmé develop a forbidden romance while Obi-Wan investigates the assassination attempts, leading him to discover a secret clone army being created for the Republic. The climax of the film occurs on the planet Geonosis, where a large-scale battle ensues, marking the beginning of the Clone Wars.

Main Characters

Star Wars: Attack of the Clones features a rich cast of characters, each contributing to the film's complex narrative.

1. Anakin Skywalker

- Portrayed by: Hayden Christensen
- Role: A Jedi Knight in training, struggling with his emotions and destiny.
- Character Arc: Anakin's journey in this film showcases his internal conflict, particularly his forbidden love for Padmé Amidala and the growing darkness within him.

2. Padmé Amidala

- Portrayed by: Natalie Portman
- Role: The former Queen of Naboo, now a senator, who is dedicated to peace but finds herself drawn to Anakin.
- Character Arc: Padmé embodies strength and resilience, grappling with her feelings for Anakin while navigating political tensions.

3. Obi-Wan Kenobi

- Portrayed by: Ewan McGregor
- Role: A wise and skilled Jedi Knight tasked with protecting Padmé and investigating the conspiracy behind the assassination attempts.
- Character Arc: Obi-Wan serves as a mentor to Anakin but also represents the Jedi Order's struggles as they face new threats.

4. Count Dooku

- Portrayed by: Christopher Lee

- Role: The main antagonist, a former Jedi who has turned to the dark side and leads the Separatist movement.
- Character Arc: Dooku's motivations reveal the complexities of the Force and the political machinations at play in the galaxy.

5. Jango Fett

- Portrayed by: Temuera Morrison
- Role: A bounty hunter who serves as the genetic template for the clone army.
- Character Arc: Jango's character introduces the idea of the bounty hunter as a central figure, linking to the larger themes of loyalty and betrayal.

Thematic Analysis

Star Wars: Attack of the Clones is rich in themes that resonate throughout the Star Wars saga.

1. Love and Forbidden Relationships

- The romantic relationship between Anakin and Padmé is central to the plot. Their love story is fraught with tension, as it violates the Jedi Code, leading to Anakin's internal struggle.
- The film raises questions about the nature of love and attachment, particularly as Anakin's fear of losing Padmé foreshadows his eventual fall to the dark side.

2. The Rise of the Dark Side

- Anakin's journey illustrates the seductive nature of power and the dark side of the Force. His fear and anger begin to take hold, marking the beginning of his transformation.
- Count Dooku symbolizes the corruption within the Jedi Order and the complexities of morality in a time of war.

3. Political Intrigue and Betrayal

- The film explores the fragility of democracy, as the Galactic Senate grapples with the separatist movement and the creation of the clone army.
- It highlights the manipulations of Palpatine, who orchestrates events from the shadows, foreshadowing his rise to power.

Visual and Technical Aspects

Star Wars: Attack of the Clones is notable for its groundbreaking visual effects and production design.

1. Special Effects

- The film was one of the first to utilize extensive digital effects, including fully digital characters and environments.
- Notable sequences, such as the battle on Geonosis and the chase through the streets of Coruscant, showcase the advancements in CGI technology.

2. Cinematography

- Director of Photography David Tattersall worked to create a visually stunning film, using a mix of practical effects and digital imagery.
- The film employs sweeping shots of various planets and dramatic lighting to enhance the emotional weight of key scenes.

3. Sound Design and Score

- John Williams' score for Attack of the Clones features memorable themes that underscore the film's romantic and dramatic elements.
- The sound design effectively immerses viewers in the Star Wars universe, from lightsaber clashes to the sounds of space battles.

Cultural Impact and Reception

Star Wars: Attack of the Clones received mixed reviews upon its release, yet it has left a lasting impact on popular culture.

1. Box Office Performance

- The film was a commercial success, grossing over \$650 million worldwide, making it one of the highest-grossing films of 2002.
- Its financial success solidified the Star Wars franchise's status as a cultural phenomenon.

2. Critical Reception

- Critics praised the film's visual effects but criticized the dialogue and character development.
- Over time, the film has garnered a more favorable reassessment by fans, who appreciate its contributions to the broader narrative.

3. Legacy in the Star Wars Franchise

- Attack of the Clones sets the stage for the events of The Clone Wars animated series and the subsequent films in the saga.
- The themes and character arcs introduced in this installment continue to resonate in later films, particularly in the context of Anakin's tragic fall.

Conclusion

In summary, Star Wars: Attack of the Clones is a multifaceted installment in the Star Wars saga, weaving together themes of love, betrayal, and political intrigue against a backdrop of stunning visuals and groundbreaking special effects. The film's exploration of Anakin Skywalker's internal conflict and the rise of the dark side adds depth to the overarching narrative of the franchise. As the precursor to the Clone Wars and the eventual fall of the Jedi, Attack of the Clones remains an essential chapter in the epic tale of the Star Wars universe. Whether viewed as a standalone film or as part of the larger saga, its impact is undeniable, continuing to captivate audiences and inspire discussions about its themes and characters.

Frequently Asked Questions

What is the main plot of 'Star Wars: Attack of the Clones'?

The film follows Jedi Knight Obi-Wan Kenobi and his apprentice Anakin Skywalker as they investigate a mysterious assassination attempt on Senator Padmé Amidala, leading to the discovery of a secret clone army and the beginnings of the Clone Wars.

Who directed 'Star Wars: Attack of the Clones'?

The film was directed by George Lucas, who also wrote the screenplay.

What role does Anakin Skywalker play in 'Attack of the Clones'?

Anakin, played by Hayden Christensen, is a Jedi Padawan who struggles with his emotions

and attachment, particularly towards Padmé Amidala, ultimately foreshadowing his future transformation into Darth Vader.

How does 'Attack of the Clones' connect to the larger Star Wars saga?

The film serves as a crucial link between 'The Phantom Menace' and 'Revenge of the Sith', setting the stage for Anakin's fall to the dark side and the rise of the Galactic Empire.

What is the significance of the Clone Army in 'Attack of the Clones'?

The Clone Army, created by the Sith Lord Darth Sidious, plays a central role in the escalating conflict between the Galactic Republic and the Separatists, marking the beginning of the Clone Wars.

What themes are explored in 'Attack of the Clones'?

The film explores themes of love, loss, betrayal, and the moral complexities of war, as well as the dangers of attachment and the consequences of making choices driven by fear.

What is the relationship between Anakin Skywalker and Padmé Amidala in this film?

Anakin and Padmé's relationship evolves from friendship to a secret romantic relationship, highlighting the conflict between Anakin's duties as a Jedi and his feelings for Padmé.

Which characters make their first appearance in 'Attack of the Clones'?

The film introduces several characters including Jango Fett, the template for the Clone Army, and Count Dooku, the leader of the Separatists, played by Christopher Lee.

Find other PDF article:

<https://soc.up.edu.ph/13-note/Book?trackid=bSv69-7886&title=cloudy-with-a-chance-of-meatballs.pdf>

Stars Wars Attack Of The Clones

Stars and Galaxies - NASA Jet Propulsion Laboratory (JPL)

Jan 12, 2021 · Stars and Galaxies Research at JPL The nighttime sky is magical. The dark curtain sprinkled with tiny dots of light has inspired songs, sparked romances, and prompted humans ...

STUDIO X+U '○○○○ ○○' - ○○○ ○ (2025) MBC '○○○○ 1958' - ○○○ ○ (2024) ○○ '○○○○' - ○○ ○ (2022~2023)
SBS ...

NASA Scientist Finds Predicted Companion Star to Betelgeuse

6 days ago · Discovery of a close companion to the 10th brightest star in our night sky may explain why similar red supergiant stars see changes in their brightness on the scale of many ...

NASA Reveals Webb Telescope's First Images of Unseen Universe

Jul 12, 2022 · The James Webb Space Telescope is the world's premier space science observatory. Webb will solve mysteries in our solar system, look beyond to distant worlds ...

What's Up - April 2025 - NASA Jet Propulsion Laboratory (JPL)

Apr 1, 2025 · What's Up for April? Planets at dusk and dawn, April showers, and observing a distant city of stars. First up, in the evening sky, we begin and end the month with Jupiter and ...

Webb Celebrates First Year of Science With Close-up on Birth of ...

Jul 12, 2023 · The new Webb image released today features the nearest star-forming region to us. Its proximity at 390 light-years allows for a highly detailed close-up, with no foreground stars in ...

A Star is Born - NASA Jet Propulsion Laboratory (JPL)

Nov 26, 2001 · Vast clouds of gas and dust are swirling throughout our Milky Way galaxy. Some of these clouds are stellar nurseries, places where thousands of stars like our Sun are being ...

Astronomers Discover Massive Star Factory in Early Universe

Apr 17, 2013 · Astronomers, including Matt Bradford, Jamie Bock, Darren Dowell, Hien Nguyen and Jonas Zmuidzinas of NASA's Jet Propulsion Laboratory, Pasadena, Calif., have ...

NASA's Webb Reveals Long-Studied Star Is Actually Twins

Jun 13, 2024 · The WL 20 group of stars is located in the Rho Ophiuchi star-forming region, imaged here by NASA's now-retired Spitzer Space Telescope. Located near the constellations ...

First Images From NASA's Europa Clipper

Feb 4, 2025 · This mosaic of a star field was made from three images captured Dec. 4, 2024, by star tracker cameras aboard NASA's Europa Clipper spacecraft.

Stars and Galaxies - NASA Jet Propulsion Laboratory (JPL)

Jan 12, 2021 · Stars and Galaxies Research at JPL The nighttime sky is magical. The dark curtain sprinkled with tiny dots of light has inspired songs, sparked romances, and prompted humans ...

○○○ > stars | ○○○○○○○○

STUDIO X+U '○○○○ ○○' - ○○○ ○ (2025) MBC '○○○○ 1958' - ○○○ ○ (2024) ○○ '○○○○' - ○○ ○ (2022~2023)
SBS ...

NASA Scientist Finds Predicted Companion Star to Betelgeuse

6 days ago · Discovery of a close companion to the 10th brightest star in our night sky may explain why similar red supergiant stars see changes in their brightness on the scale of many ...

NASA Reveals Webb Telescope's First Images of Unseen Universe

Jul 12, 2022 · The James Webb Space Telescope is the world's premier space science observatory. Webb will solve mysteries in our solar system, look beyond to distant worlds ...

What's Up - April 2025 - NASA Jet Propulsion Laboratory (JPL)

Apr 1, 2025 · What's Up for April? Planets at dusk and dawn, April showers, and observing a distant city of stars. First up, in the evening sky, we begin and end the month with Jupiter and ...

Webb Celebrates First Year of Science With Close-up on Birth of ...

Jul 12, 2023 · The new Webb image released today features the nearest star-forming region to us. Its proximity at 390 light-years allows for a highly detailed close-up, with no foreground stars in ...

A Star is Born - NASA Jet Propulsion Laboratory (JPL)

Nov 26, 2001 · Vast clouds of gas and dust are swirling throughout our Milky Way galaxy. Some of these clouds are stellar nurseries, places where thousands of stars like our Sun are being ...

Astronomers Discover Massive Star Factory in Early Universe

Apr 17, 2013 · Astronomers, including Matt Bradford, Jamie Bock, Darren Dowell, Hien Nguyen and Jonas Zmuidzinas of NASA's Jet Propulsion Laboratory, Pasadena, Calif., have ...

NASA's Webb Reveals Long-Studied Star Is Actually Twins

Jun 13, 2024 · The WL 20 group of stars is located in the Rho Ophiuchi star-forming region, imaged here by NASA's now-retired Spitzer Space Telescope. Located near the constellations ...

First Images From NASA's Europa Clipper

Feb 4, 2025 · This mosaic of a star field was made from three images captured Dec. 4, 2024, by star tracker cameras aboard NASA's Europa Clipper spacecraft.

Explore the epic saga of 'Star Wars: Attack of the Clones'. Discover key plot twists

[Back to Home](#)