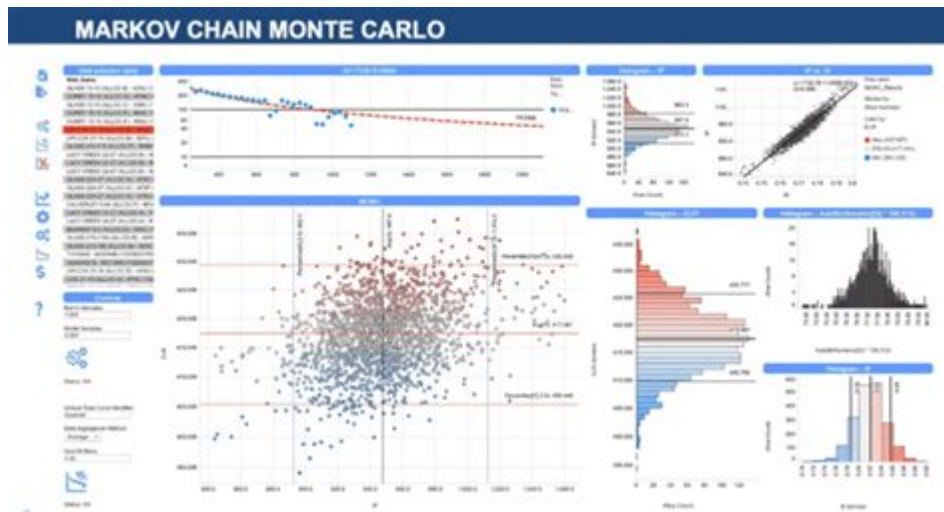


Spotfire Training For Oil And Gas



Spotfire training for oil and gas is essential for professionals in the energy sector to leverage data analytics and visualization tools effectively. In an industry characterized by vast amounts of data generated from exploration, production, and distribution activities, the ability to make data-driven decisions is crucial. Spotfire, developed by TIBCO, is a powerful analytics platform that enables users to visualize complex data sets and derive actionable insights. This article explores the significance of Spotfire training in the oil and gas sector, the components of effective training programs, and best practices for implementation.

Importance of Spotfire Training in the Oil and Gas Industry

The oil and gas sector faces unique challenges, including fluctuating prices, regulatory compliance, and the need to enhance operational efficiency. Spotfire training equips professionals with the skills needed to harness data analytics, leading to improved decision-making processes. Here are some key reasons why Spotfire training is vital:

1. Enhanced Data Visualization

- Spotfire allows users to create intuitive visual representations of complex data.
- Effective training helps professionals understand how to manipulate data visualizations to highlight key insights.
- Enhanced visualization aids in identifying trends, patterns, and outliers in data.

2. Improved Decision-Making

- Trained professionals can analyze data in real time, enabling proactive decision-making.
- Spotfire's predictive analytics capabilities allow users to forecast trends and potential issues.
- Better decision-making leads to optimized operations and resource allocation.

3. Increased Collaboration

- Spotfire provides collaborative tools for teams to share insights and findings seamlessly.
- Training fosters a culture of data literacy, promoting collaboration across departments.
- Increased collaboration often results in innovative solutions to complex problems.

4. Cost Efficiency

- Utilizing Spotfire effectively can lead to significant cost savings by optimizing operations and reducing waste.
- Training helps minimize errors in data analysis, which can be costly in the long run.
- Enhanced efficiency directly impacts the bottom line, making organizations more competitive.

Components of Effective Spotfire Training Programs

A well-rounded Spotfire training program should encompass various components to ensure participants gain comprehensive knowledge and practical skills. Below are key elements of an effective training program:

1. Curriculum Development

- Fundamentals of Data Analytics: Understanding basic concepts of data analysis and statistics.
- Introduction to Spotfire: Familiarization with the Spotfire interface, tools, and functionalities.
- Data Import and Preparation: Learning how to import data from various sources and prepare it for analysis.
- Creating Visualizations: Hands-on training on creating different types of visualizations such as charts, graphs, and maps.
- Advanced Analytics Techniques: Training on using advanced features, including predictive analytics and data modeling.

2. Delivery Methods

- In-Person Training: Interactive sessions led by experienced instructors, allowing for real-time feedback and collaboration.
- Online Courses: Flexible e-learning options that participants can complete at their own pace.
- Workshops and Webinars: Short, focused sessions on specific topics, providing opportunities for skill enhancement.

3. Hands-On Practice

- Real-World Scenarios: Incorporating case studies and practical exercises relevant to the oil and gas industry.
- Project Work: Encouraging participants to work on projects that require the application of Spotfire skills.
- Simulations and Role-Playing: Creating scenarios that mimic real-life challenges faced in the

industry.

4. Assessment and Feedback

- Quizzes and Tests: Regular assessments to gauge understanding and retention of concepts.
- Peer Reviews: Encouraging participants to provide and receive feedback on each other's work.
- Instructor Feedback: Providing constructive feedback on projects and exercises to help participants improve.

Best Practices for Spotfire Training Implementation

To maximize the effectiveness of Spotfire training, organizations should adhere to certain best practices:

1. Assess Training Needs

- Conduct a needs assessment to identify the specific skills gaps within the organization.
- Tailor the training program to address the unique challenges faced by the oil and gas sector.

2. Engage Stakeholders

- Involve key stakeholders from different departments when designing the training program.
- Ensure alignment between training objectives and organizational goals.

3. Foster a Culture of Continuous Learning

- Encourage ongoing education and skill development beyond initial training.
- Provide access to additional resources, such as online tutorials and forums.

4. Monitor Progress and Outcomes

- Implement metrics to evaluate the effectiveness of the training program.
- Adjust the curriculum based on participant feedback and performance metrics.

5. Leverage External Expertise

- Consider partnering with training providers who specialize in Spotfire and the oil and gas industry.
- External experts can bring fresh insights and advanced techniques to enhance the training experience.

Conclusion

In conclusion, Spotfire training for oil and gas professionals is a critical investment for organizations aiming to thrive in a data-driven environment. By understanding the importance of data visualization, improving decision-making, and fostering collaboration, professionals can leverage Spotfire's capabilities to navigate challenges effectively. Implementing a comprehensive training program that includes hands-on practice, real-world applications, and continuous learning will empower teams to unlock the full potential of their data analytics efforts. As the oil and gas industry continues to evolve, the ability to harness data insights will remain a key competitive advantage, making Spotfire training an invaluable asset for any organization in the sector.

Frequently Asked Questions

What is Spotfire and how is it used in the oil and gas industry?

Spotfire is a data analytics and visualization tool that allows oil and gas companies to analyze large datasets, visualize trends, and make data-driven decisions. It is used for exploration analysis, production optimization, and monitoring environmental impacts.

What are the key features of Spotfire that benefit oil and gas professionals?

Key features include interactive dashboards, real-time data integration, predictive analytics, geospatial mapping, and advanced visualization options that help professionals uncover insights from complex datasets.

Is there a specific Spotfire training program tailored for the oil and gas sector?

Yes, there are specialized training programs designed for oil and gas professionals that focus on industry-specific use cases, data handling techniques, and best practices for using Spotfire in exploration and production.

What skills can participants expect to gain from Spotfire training for oil and gas?

Participants can expect to gain skills in data visualization, predictive modeling, creating interactive reports, managing data sources, and applying analytical techniques specific to oil and gas operations.

How does Spotfire training enhance decision-making in oil and gas companies?

Spotfire training enhances decision-making by equipping professionals with the ability to visualize and analyze data quickly, identify trends, and derive actionable insights, thereby improving operational efficiency and reducing risks.

What are some common challenges oil and gas companies face when using Spotfire?

Common challenges include data integration from multiple sources, ensuring data quality, user adoption, and the need for continuous training to keep up with software updates and new features.

Can Spotfire be integrated with other software tools used in the oil and gas industry?

Yes, Spotfire can be integrated with various software tools commonly used in the oil and gas industry, such as GIS systems, databases, and other analytical tools, allowing for a seamless workflow and enhanced data analysis.

What resources are available for ongoing Spotfire training and support in the oil and gas sector?

Resources include online tutorials, community forums, user groups, webinars, and professional training courses offered by specialized training providers, as well as documentation and support from TIBCO, the company behind Spotfire.

Find other PDF article:

<https://soc.up.edu.ph/04-ink/files?docid=Mrc12-9773&title=adventures-for-11-year-olds.pdf>

Spotfire Training For Oil And Gas

Spotfire -

--Spotfire Desktop Spotfire Spotfire Spotfire 1.

How can separate data into different groups for the Cumulative ...

Jan 26, 2023 · The data function works by creating a separate CDF for each group, then concatenating them into the final table. The resulting table can be displayed via a line chart separated by group. You don't need ggplot2 as that is the R library for data visualization, which is taken care of by Spotfire.

Automatically export data in spotfire, and send this data(such as ...

Aug 23, 2023 · We use spotfire as one of way of gathering all data from various applications. Data from various applications are gathered as a form of excel file in spotfire, and these are updated in real time. What i want to utilize with this kind of excel ...

Multiple if condition - Integration - TIBCO Community

Feb 26, 2021 · How do I create multiple if conditions in Spotfire

Security Advisories - TIBCO Community

Dec 2, 2022 · TIBCO Security Advisory: May 28, 2024 - TIBCO Managed File Transfer Platform

How to automatically set a property value to the last loading date

Feb 4, 2021 · hi all, I would like to have a label in a text area that display the last loading date of a particular table (the information I want is showed below). Another way to put the question:How to automatically set a property value to the last loading date Thanks for your help!

reading from html input field - Integration - TIBCO Community

Jan 22, 2020 · Thanks yes, you are correct, that is more for script side. Another way I am looking at this issue, if there is a way to capture data from an input field. where the input field is not assigned to Document Properties To test it out, I assigned a default value to be assigned when generating the input fields dynamically. After I made a change tto the default value via textarea, ...

average values of a column ignoring zeros

May 7, 2021 · Hi, I am trying to get averages of multiple columns and the issue is when i apply `avg["seclcted column"]` its using the 0's (i have replaced missing values with 0). I dont want this to effect my averages. How can i ignore those while i calucate my averages. I tried to use the below expression `avg...`

TIBCO Spotfire □□□□□□□□ - □□

Spotfire[REDACTED]
Spotfire[REDACTED] TIBCO Spotfire[REDACTED]Spotfire[REDACTED] ...

Intermittent Connection issues into TDV Servers - TIBCO Community

Aug 31, 2021 · Hi Chris, Have you also checked the logfiles on the node manager server 3 In particular the nm.log and the worker.host logs It is a bit strange that only this node has intermittent issues. Do you connect to TDV (from Spotfire) using information links Or do you use the direct connection (ODBC based) If you are using information links, you are using the csjdbc.jar file. ...

Spotfire -

```
--Spotfire Desktop   Spotfire      Spotfire
Spotfire            Spotfire     1.
```

How can separate data into different groups for the Cumulative ...

Jan 26, 2023 · The data function works by creating a separate CDF for each group, then concatenating them into the final table. The resulting table can be displayed via a line chart separated by group. You don't need ggplot2 as that is the R library for data visualization, which is taken care of by Spotfire.

Auotomatically export data in spotfire, and send this data(such as ...

Aug 23, 2023 · We use spotfire as one of way of gathering all data from various applications. Data from various applications are gathered as a form of excel file in spotfire, and these are updated in real time. What i want to utilize with this kind of excel ...

Multiple if condition - Integration - TIBCO Community

Feb 26, 2021 · How do I create multiple if conditions in Spotfire

Security Advisories - TIBCO Community

Dec 2, 2022 · TIBCO Security Advisory: May 28, 2024 - TIBCO Managed File Transfer Platform Server for Unix - CVE-2024-4407

How to automatically set a property value to the last loading date

Feb 4, 2021 · hi all, I would like to have a label in a text area that display the last loading date of a particular table (the information I want is showed below). Another way to put the question:How to automatically set a property value to the last loading date Thanks for your help!

reading from html input field - Integration - TIBCO Community

Jan 22, 2020 · Thanks yes, you are correct, that is more for script side. Another way I am looking at this issue, if there is a way to capture data from an input field. where the input field is not assigned to Document Properties To test it out, I assigned a default value to be assigned when generating the input fields dynamically. After I made a change tto the default value via ...

average values of a column ignoring zeros

May 7, 2021 · Hi, I am trying to get averages of multiple columns and the issue is when i apply `avg["selected column"]` its using the 0's(i have replaced missing values with 0). I dont want this to effect my averages. How can i ignore those while i calacate my averages. I tried to use the below expression `avg...`

TIBCO Spotfire □□□□□□□□ - □□

Spotfire
Spotfire TIBCO Spotfire Spotfire ...

Intermittent Connection issues into TDV Servers - TIBCO Community

Aug 31, 2021 · Hi Chris, Have you also checked the logfiles on the node manager server 3 In particular the nm.log and the worker.host logs It is a bit strange that only this node has intermittent issues. Do you connect to TDV (from Spotfire) using information links Or do you use the direct connection (ODBC based) If you are using information links, you are using the csjdbc.jar file. ...

Unlock the potential of your data with Spotfire training for oil and gas. Enhance your skills and drive better decisions. Learn more today!

[Back to Home](#)