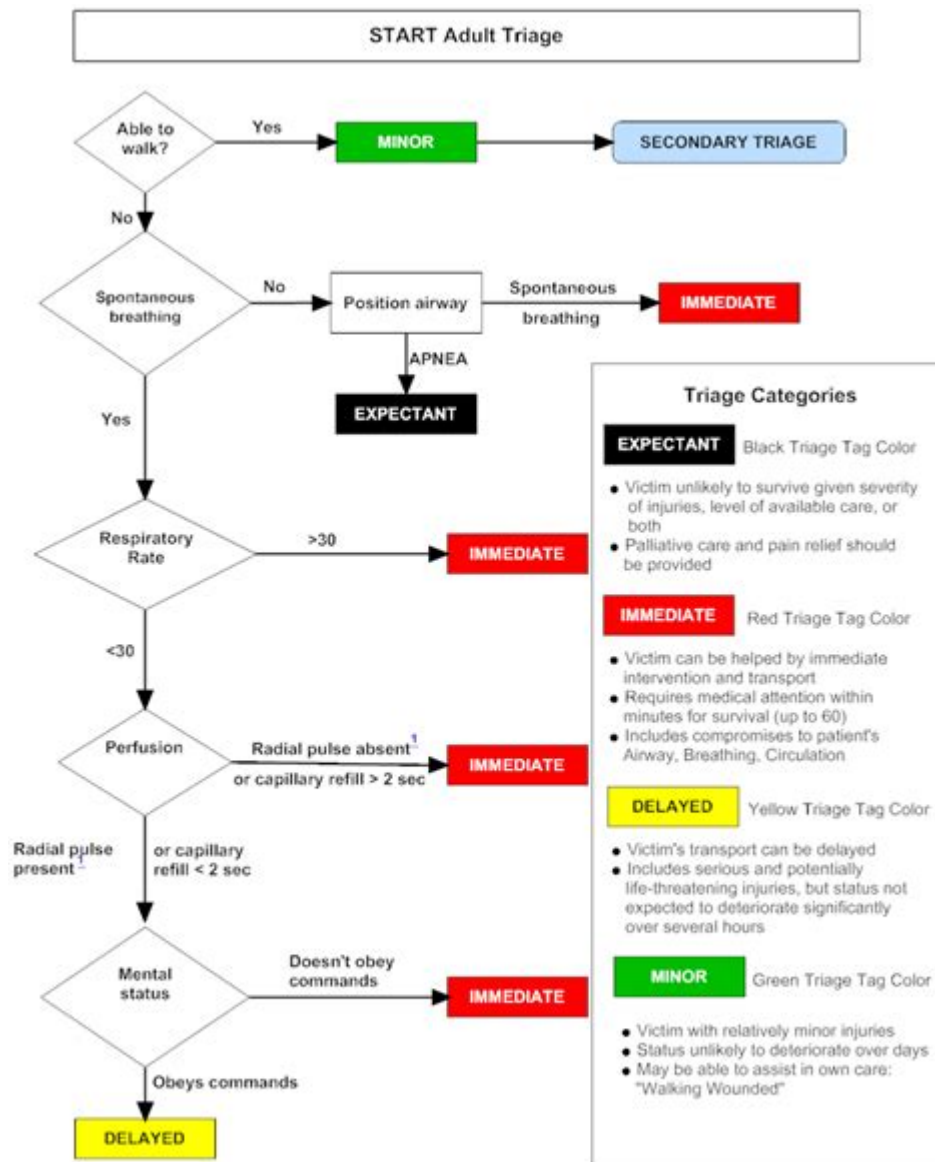


# Start Triage Practice Scenarios



**Start triage practice scenarios** are essential components of emergency medical training and preparedness. They provide an opportunity for healthcare professionals, including nurses, paramedics, and emergency medical technicians (EMTs), to practice their skills in assessing and prioritizing patients based on the severity of their conditions. Triage is critical in situations with multiple casualties, enabling responders to allocate limited resources effectively. This article explores various triage practice scenarios, discusses their importance, and offers insights on implementing these scenarios in training programs.

# Understanding Triage

Triage is derived from the French word "trier," meaning to sort. In the context of emergency medicine, it refers to the process of evaluating patients to determine the urgency of their medical needs. The primary goal of triage is to ensure that patients receive timely and appropriate care, especially when the number of patients exceeds the available resources.

## The Triage Process

The triage process generally involves three key steps:

1. **Assessment:** Evaluating patients' conditions and symptoms.
2. **Prioritization:** Classifying patients based on the severity of their conditions.
3. **Intervention:** Providing immediate care or directing patients to appropriate facilities.

Triage can occur in various settings, including hospitals, disaster zones, and during mass casualty incidents.

## Importance of Triage Practice Scenarios

Triage practice scenarios are crucial for several reasons:

- **Skill Development:** They help healthcare professionals develop critical thinking and decision-making skills in high-pressure situations.
- **Team Coordination:** These scenarios promote effective communication and teamwork among emergency responders.
- **Resource Management:** Practicing triage allows responders to understand how to manage limited resources effectively.
- **Confidence Building:** Regular practice enhances confidence in making quick and accurate decisions.

## Types of Triage Practice Scenarios

Triage practice scenarios can be tailored to various situations, ranging from minor incidents to large-scale disasters. Below are some common types:

### 1. Mass Casualty Incidents (MCI)

In an MCI scenario, multiple patients require immediate care due to a single

event, such as a natural disaster or a terrorist attack. Participants can practice categorizing patients using the Simple Triage and Rapid Treatment (START) method, which assigns patients to one of four categories:

- Red (Immediate): Patients who require immediate life-saving interventions.
- Yellow (Delayed): Patients who require care but can wait a short period.
- Green (Minimal): Patients with minor injuries who can wait for treatment.
- Black (Deceased): Patients who are not viable for resuscitation.

## **2. Triage in Emergency Departments**

In a hospital setting, triage scenarios can be simulated in emergency departments where participants practice assessing patients as they arrive. This includes:

- Evaluating vital signs.
- Identifying life-threatening conditions.
- Utilizing triage scales, such as the Emergency Severity Index (ESI).

## **3. Field Triage Scenarios**

Field triage scenarios can involve practicing assessments in pre-hospital environments, such as at a sports event or during a community health fair. Here, participants may encounter various situations, including:

- Treating a patient with a suspected spinal injury.
- Assessing a child with respiratory distress.
- Responding to a patient experiencing a cardiac event.

## **4. Pediatric Triage Scenarios**

Special considerations are necessary when triaging pediatric patients due to their unique physiological responses and developmental stages. Scenarios can include:

- Assessing a child with asthma exacerbation.
- Evaluating a toddler with a high fever and rash.

Practitioners must utilize age-appropriate assessment tools and techniques to ensure accurate evaluations.

# Implementing Start Triage Practice Scenarios

To effectively implement triage practice scenarios, organizations should consider the following steps:

## 1. Define Objectives

Establish clear goals for each scenario, such as improving assessment skills, enhancing teamwork, or increasing familiarity with triage protocols.

## 2. Develop Realistic Scenarios

Create scenarios that reflect potential real-world events that participants may encounter. Include various patient presentations, conditions, and severity levels to challenge participants.

## 3. Utilize Simulation Technology

Incorporate simulation technology, such as manikins and virtual reality, to create immersive experiences. This technology can enhance realism and provide immediate feedback on participant performance.

## 4. Encourage Team Collaboration

Promote teamwork by assigning roles within the triage team, such as team leader, patient assessor, and communication officer. This helps participants practice coordination and communication skills.

## 5. Debriefing and Feedback

After each scenario, conduct a debriefing session to discuss the strengths and weaknesses of the team's performance. Encourage open feedback and provide constructive criticism to facilitate learning.

## Challenges in Triage Practice Scenarios

While triage practice scenarios offer numerous benefits, there are challenges that organizations may encounter, including:

- **Resource Limitations:** Limited access to simulation technology or trained facilitators can hinder the effectiveness of practice scenarios.
- **Participant Anxiety:** Participants may experience anxiety in high-pressure practice settings, which can affect their performance. Providing a supportive environment is essential.
- **Realism vs. Practicality:** Striking a balance between creating realistic scenarios and ensuring they are practical and feasible in a training context can be challenging.

## **Conclusion**

Start triage practice scenarios are vital for preparing healthcare professionals to respond effectively in emergency situations. By regularly engaging in these practice scenarios, teams can refine their skills, enhance collaboration, and improve patient outcomes. As the landscape of healthcare continues to evolve, ongoing training and scenario-based practice will remain essential for ensuring that responders are equipped to handle the complexities of triage in real-world settings. Organizations should prioritize the development and execution of these scenarios to foster a culture of preparedness and excellence in emergency care.

## **Frequently Asked Questions**

### **What is a triage practice scenario?**

A triage practice scenario is a simulated situation where healthcare professionals assess and prioritize patients based on the severity of their conditions to ensure that those who need immediate care receive it first.

### **Why is triage important in emergency situations?**

Triage is crucial in emergency situations because it helps to efficiently allocate limited medical resources, ensuring that the most critically ill patients receive timely treatment, which can significantly improve outcomes.

### **What are the common methods used in triage practice?**

Common methods used in triage practice include the START (Simple Triage and Rapid Treatment) system, the SALT (Sort, Assess, Lifesaving interventions, and Treatment) method, and the JumpSTART for pediatric patients.

### **How can simulation training enhance triage skills?**

Simulation training enhances triage skills by providing healthcare professionals with realistic scenarios to practice decision-making, improve teamwork, and develop critical thinking under pressure without risking patient safety.

## What factors should be considered in a triage scenario?

Factors to consider in a triage scenario include the patient's vital signs, level of consciousness, mechanism of injury, presence of life-threatening conditions, and the availability of resources and personnel.

## How do you prioritize patients during triage?

Patients are prioritized during triage using a color-coded system, typically categorizing them as red (immediate), yellow (delayed), green (minor), or black (deceased), based on the urgency of their medical needs.

## What role does communication play in triage practice?

Communication is vital in triage practice as it ensures that all team members are aware of patient statuses, decisions made, and resource allocations, which helps to coordinate care effectively and avoid confusion.

## What challenges might arise during triage in a real-world scenario?

Challenges during triage in real-world scenarios can include overwhelming patient numbers, limited resources, varying levels of staff experience, and the emotional strain on both patients and healthcare workers.

Find other PDF article:

<https://soc.up.edu.ph/54-tone/files?docid=vvJ16-8930&title=small-manufacturing-business-from-home.pdf>

## Start Triage Practice Scenarios

*All apps in windows 11 start menu.. - Microsoft Q&A*

Jul 31, 2021 · I don't want to see pinned or recommended apps in the start menu rather i want to see all the apps together just with a single click on the start icon , I don't want to click on another ...

**Outlook won't start - Microsoft Community**

Sep 8, 2020 · Outlook won't start I'm getting this message when I choose Outlook from the new page that makes you load it and then choose one of the Office icons. I don't know why it started ...

*How do I start a new note on my Android phone in OneNote?*

Apr 16, 2025 · Hi Ellen, Welcome to the Microsoft community, Starting a new note in OneNote on your Android phone is simple! Here's how: Open OneNote Launch the OneNote app on your ...

### *Cannot start Microsoft Office Outlook*

Feb 11, 2025 · Cannot start Microsoft Office Outlook Tried opening outlook and received the following "cannot start Microsoft Office Outlook. Cannot open the Outlook window. The set of ...

### **new document - How do I start a new document in Office Home and ...**

Jun 25, 2020 · Hi Mary When you open Word, at the top left, is there a blank new document, if so,clicking that will open a new document Otherwise in Word, click File - New to create a new ...

### **Windows Security won't launch in Windows 11 - Microsoft Community**

Oct 6, 2023 · Windows, Surface, Bing, Microsoft Edge, Windows Insider, and Microsoft Advertising forums are available exclusively on Microsoft Q&A. This change will help us provide a more ...

### Error Message: The application was unable to start correctly (Word ...

Jul 10, 2025 · Please start creating your questions related to these products on .. We're retiring the Xbox forums. It is no longer possible to create questions in the Gaming and Xbox forums, and ...

### microsoft word cannot start converter - Microsoft Community

I keep getting a message that microsoft word cannot start converter SSPDFCG.cnv what does this mean and how do i fix it

### **Why I cannot start Microsoft Outlook directly opening a .eml message**

Apr 13, 2013 · Why I cannot start Microsoft Outlook directly opening a .eml message Windows 8 + Office 2013 (fresh 64bit installation) If I try to open a eml file I got error: 1- if Outlook is close: ...

### *Every time i try and start cloud gaming it kicks me back to my menu ...*

Jul 16, 2025 · Experiencing issues with cloud gaming? Learn why it kicks back to the menu screen and explore solutions for a seamless experience.

### **All apps in windows 11 start menu.. - Microsoft Q&A**

Jul 31, 2021 · I don't want to see pinned or recommended apps in the start menu rather i want to see all the apps together just with a single click on the start icon , I don't want to click on ...

### Outlook won't start - Microsoft Community

Sep 8, 2020 · Outlook won't start I'm getting this message when I choose Outlook from the new page that makes you load it and then choose one of the Office icons. I don't know why it ...

### **How do I start a new note on my Android phone in OneNote?**

Apr 16, 2025 · Hi Ellen, Welcome to the Microsoft community, Starting a new note in OneNote on your Android phone is simple! Here's how: Open OneNote Launch the OneNote app on your ...

### **Cannot start Microsoft Office Outlook**

Feb 11, 2025 · Cannot start Microsoft Office Outlook Tried opening outlook and received the following "cannot start Microsoft Office Outlook. Cannot open the Outlook window. The set of ...

### **new document - How do I start a new document in Office Home ...**

Jun 25, 2020 · Hi Mary When you open Word, at the top left, is there a blank new document, if so,clicking that will open a new document Otherwise in Word, click File - New to create a new ...

### Windows Security won't launch in Windows 11 - Microsoft ...

Oct 6, 2023 · Windows, Surface, Bing, Microsoft Edge, Windows Insider, and Microsoft Advertising forums are available exclusively on Microsoft Q&A. This change will help us ...

### **Error Message: The application was unable to start correctly ...**

Jul 10, 2025 · Please start creating your questions related to these products on .. .. We're retiring the Xbox forums. It is no longer possible to create questions in the Gaming and Xbox forums, ...

### **microsoft word cannot start converter - Microsoft Community**

I keep getting a message that microsoft word cannot start converter SSPDFCG.cnv what does this mean and how do i fix it

### **Why I cannot start Microsoft Outlook directly opening a .eml ...**

Apr 13, 2013 · Why I cannot start Microsoft Outlook directly opening a .eml message Windows 8 + Office 2013 (fresh 64bit installation) If I try to open a eml file I got error: 1- if Outlook is close: ...

### **Every time i try and start cloud gaming it kicks me back to my ...**

Jul 16, 2025 · Experiencing issues with cloud gaming? Learn why it kicks back to the menu screen and explore solutions for a seamless experience.

"Discover how to start triage practice scenarios effectively. Enhance your skills

[Back to Home](#)