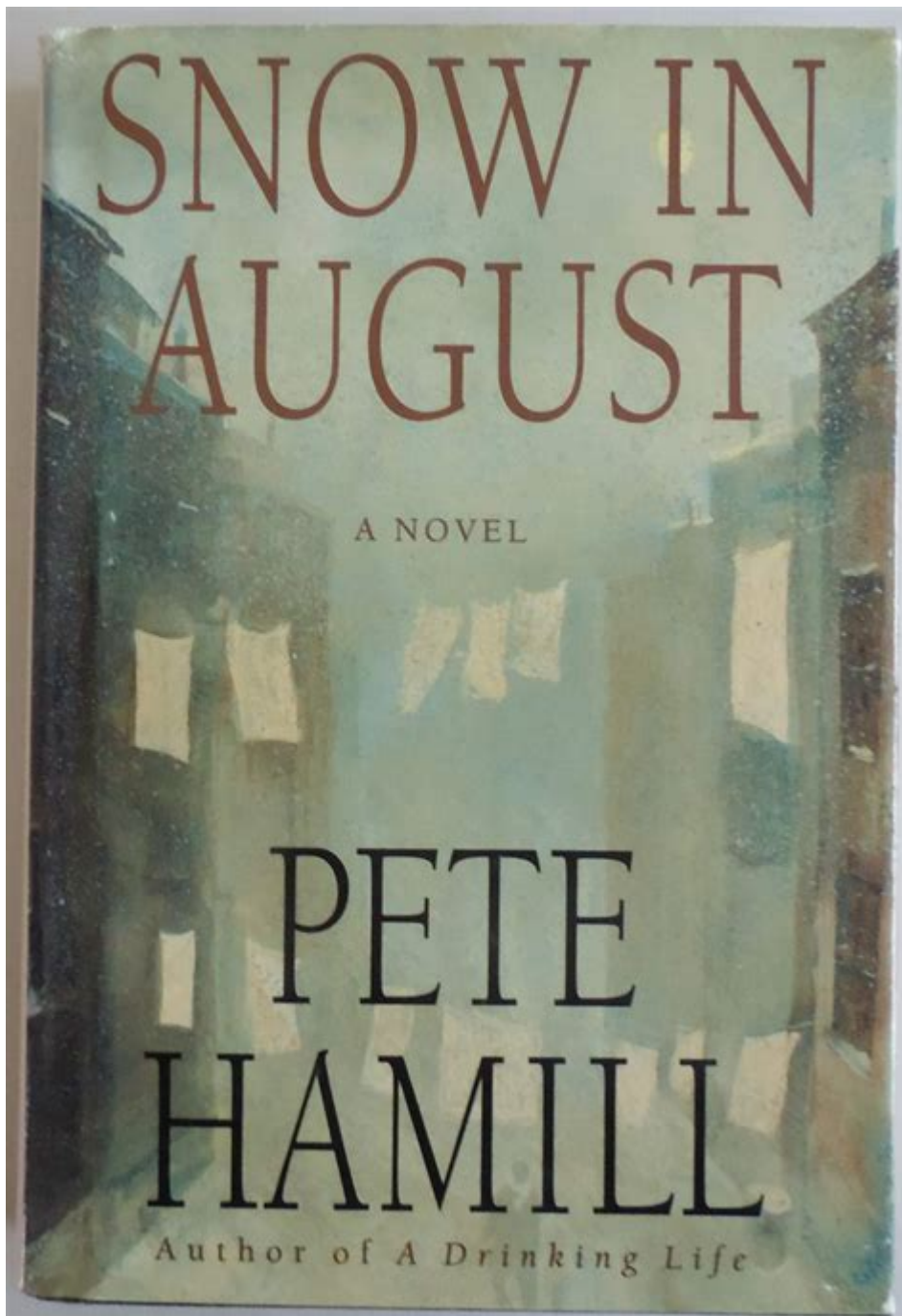


Snow In August Pete Hamill



SNOW IN AUGUST PETE HAMILL IS A POIGNANT EXPLORATION OF MEMORY, LOSS, AND THE BITTERSWEET NATURE OF NOSTALGIA. THE STORY, SET AGAINST THE BACKDROP OF A NEW YORK CITY SUMMER, DELVES INTO THE LIFE OF A MAN REFLECTING ON HIS PAST, INTERTWINED WITH THE VIVID IMAGERY OF SNOW FALLING IN AUGUST. HAMILL'S NARRATIVE CAPTURES THE ESSENCE OF URBAN LIFE, THE COMPLEXITIES OF HUMAN RELATIONSHIPS, AND THE MOMENTS THAT DEFINE US. THIS ARTICLE WILL TAKE A CLOSER LOOK AT THE THEMES, CHARACTERS, AND STYLISTIC ELEMENTS THAT MAKE "SNOW IN AUGUST" A SIGNIFICANT WORK IN CONTEMPORARY LITERATURE.

OVERVIEW OF "SNOW IN AUGUST"

PUBLISHED IN 1997, "SNOW IN AUGUST" IS A NOVEL BY PETE HAMILL THAT TELLS THE STORY OF A YOUNG BOY, A JEWISH

IMMIGRANT, AND A CATHOLIC PRIEST WHO FORM AN UNLIKELY FRIENDSHIP IN THE DIVERSE NEIGHBORHOOD OF BROOKLYN DURING THE SUMMER OF 1947. THE NARRATIVE EXPLORES THE IMPACT OF CULTURAL DIFFERENCES, RELIGIOUS TENSIONS, AND THE INNOCENCE OF CHILDHOOD AGAINST THE HARSH REALITIES OF URBAN LIFE.

SETTING AND CONTEXT

THE SETTING OF "SNOW IN AUGUST" IS VITAL TO UNDERSTANDING THE NARRATIVE'S EMOTIONAL DEPTH. HAMILL PAINTS A DETAILED PICTURE OF BROOKLYN IN THE LATE 1940s, A TIME WHEN THE CITY WAS A MELTING POT OF CULTURES AND IDEOLOGIES. THE:

1. VIVID DESCRIPTIONS: HAMILL'S DESCRIPTIONS OF THE STREETS, THE PEOPLE, AND THE ATMOSPHERE OF BROOKLYN CREATE A RICH TAPESTRY THAT IMMERSES READERS IN THE ERA.
2. HISTORICAL SIGNIFICANCE: THE POST-WORLD WAR II CONTEXT ADDS LAYERS TO THE CHARACTERS' EXPERIENCES, REFLECTING THE SOCIETAL CHANGES AND CHALLENGES OF THE TIME.
3. SYMBOLISM OF SNOW: THE TITULAR SNOW SYMBOLIZES PURITY AND INNOCENCE, CONTRASTING SHARPLY WITH THE HEAT OF AN AUGUST SUMMER, REPRESENTING THE COMPLEXITIES OF LIFE AND MEMORY.

CHARACTER ANALYSIS

THE CHARACTERS IN "SNOW IN AUGUST" ARE THOUGHTFULLY CRAFTED, EACH CONTRIBUTING TO THE THEMATIC RICHNESS OF THE STORY. HERE ARE SOME OF THE CENTRAL FIGURES:

1. THE YOUNG PROTAGONIST

THE YOUNG BOY, WHO SERVES AS THE NARRATOR, EMBODIES THE INNOCENCE AND CURIOSITY OF YOUTH. HIS PERSPECTIVE ALLOWS READERS TO VIEW THE WORLD THROUGH THE EYES OF A CHILD GRAPPLING WITH THE COMPLEXITIES OF ADULT ISSUES, SUCH AS:

- FRIENDSHIP: HIS BOND WITH THE PRIEST DEMONSTRATES THE POWER OF FRIENDSHIP TO TRANSCEND CULTURAL AND RELIGIOUS BOUNDARIES.
- LOSS: THE BOY'S EXPERIENCES OF LOSS AND LONGING ARE CENTRAL TO THE NARRATIVE, REPRESENTING THE UNIVERSAL STRUGGLE TO COME TO TERMS WITH CHANGE.

2. THE PRIEST

THE CATHOLIC PRIEST IS A PIVOTAL CHARACTER WHO PROVIDES GUIDANCE AND SUPPORT TO THE YOUNG BOY. HIS ROLE SERVES MULTIPLE PURPOSES:

- MENTORSHIP: HE REPRESENTS A MORAL COMPASS FOR THE PROTAGONIST, OFFERING WISDOM AND COMPASSION.
- CONFLICT: THE PRIEST'S BACKGROUND AND BELIEFS CREATE TENSION WITHIN THE COMMUNITY, SHOWCASING THE CHALLENGES OF INTERFAITH RELATIONSHIPS.

3. THE COMMUNITY

THE DIVERSE BROOKLYN COMMUNITY IS ALMOST A CHARACTER IN ITSELF, REFLECTING THE TENSIONS AND CONNECTIONS BETWEEN VARIOUS CULTURAL GROUPS. KEY POINTS INCLUDE:

- CULTURAL DIVERSITY: THE INTERACTIONS AMONG JEWISH AND CATHOLIC COMMUNITIES HIGHLIGHT THE SOCIAL DYNAMICS OF

THE TIME.

- SHARED HUMANITY: DESPITE DIFFERENCES, THE COMMUNITY MEMBERS SHARE COMMON STRUGGLES, ILLUSTRATING THE THEME OF UNITY IN DIVERSITY.

THEMES IN "SNOW IN AUGUST"

HAMILL WEAVES SEVERAL PROFOUND THEMES THROUGHOUT "SNOW IN AUGUST," ENRICHING THE NARRATIVE AND INVITING READERS TO REFLECT ON THEIR OWN EXPERIENCES.

1. MEMORY AND NOSTALGIA

MEMORY PLAYS A CRUCIAL ROLE IN THE NARRATIVE, AS THE PROTAGONIST REFLECTS ON HIS PAST EXPERIENCES. KEY ASPECTS INCLUDE:

- SELECTIVE MEMORY: THE WAY WE REMEMBER EVENTS CAN SHAPE OUR IDENTITY, ILLUSTRATING THE COMPLEXITIES OF NOSTALGIA.
- IMPACT OF THE PAST: THE PROTAGONIST'S RECOLLECTIONS INFLUENCE HIS PRESENT, DEMONSTRATING HOW MEMORIES CAN BE BOTH COMFORTING AND PAINFUL.

2. IDENTITY AND BELONGING

THE EXPLORATION OF IDENTITY IS CENTRAL TO THE CHARACTERS' JOURNEYS, PARTICULARLY REGARDING CULTURAL AND RELIGIOUS BACKGROUNDS. CONSIDERATIONS INCLUDE:

- CULTURAL HERITAGE: THE CHARACTERS GRAPPLE WITH THEIR CULTURAL IDENTITIES, SEEKING TO UNDERSTAND THEIR PLACE IN A RAPIDLY CHANGING WORLD.
- BELONGING: THE QUEST FOR BELONGING DRIVES THE RELATIONSHIPS BETWEEN CHARACTERS, HIGHLIGHTING THE IMPORTANCE OF COMMUNITY AND CONNECTION.

3. INNOCENCE AND EXPERIENCE

THE CONTRAST BETWEEN CHILDHOOD INNOCENCE AND THE HARSH REALITIES OF ADULTHOOD IS A RECURRING THEME. NOTABLE POINTS:

- LOSS OF INNOCENCE: THE PROTAGONIST'S JOURNEY REFLECTS THE INEVITABLE LOSS OF INNOCENCE AS HE CONFRONTS LIFE'S CHALLENGES.
- GROWTH AND MATURITY: THE NARRATIVE ILLUSTRATES HOW EXPERIENCES SHAPE INDIVIDUALS, LEADING TO PERSONAL GROWTH AND MATURITY.

STYLISTIC ELEMENTS

PETE HAMILL'S WRITING STYLE IN "SNOW IN AUGUST" IS CHARACTERIZED BY ITS LYRICAL QUALITY AND VIVID IMAGERY. KEY ELEMENTS INCLUDE:

1. IMAGERY

HAMILL'S USE OF IMAGERY IS STRIKING, WITH DESCRIPTIONS THAT EVOKE THE SIGHTS, SOUNDS, AND EMOTIONS OF BROOKLYN. EXAMPLES INCLUDE:

- SENSORY DETAILS: THE SIGHTS OF SNOW IN AUGUST, THE SOUNDS OF THE CITY, AND THE FLAVORS OF ETHNIC FOODS CREATE AN IMMERSIVE EXPERIENCE.
- SYMBOLIC ELEMENTS: THE SNOW SERVES AS A POWERFUL SYMBOL THROUGHOUT THE NARRATIVE, REPRESENTING PURITY, CHANGE, AND THE PASSAGE OF TIME.

2. LANGUAGE AND TONE

THE TONE OF THE NOVEL IS REFLECTIVE AND NOSTALGIC, OFTEN INFUSED WITH A SENSE OF LONGING. CONSIDERATIONS INCLUDE:

- CONVERSATIONAL STYLE: HAMILL'S WRITING FEELS INTIMATE AND PERSONAL, DRAWING READERS INTO THE PROTAGONIST'S THOUGHTS AND FEELINGS.
- EMOTIONAL RESONANCE: THE LANGUAGE EVOKES EMPATHY, ALLOWING READERS TO CONNECT DEEPLY WITH THE CHARACTERS' STRUGGLES AND TRIUMPHS.

3. STRUCTURE AND PACING

THE NOVEL'S STRUCTURE MIRRORS THE EBB AND FLOW OF MEMORY. KEY ASPECTS INCLUDE:

- NON-LINEAR NARRATIVE: THE SHIFTS IN TIME AND PERSPECTIVE CREATE A SENSE OF NOSTALGIA AND REFLECTION, ENHANCING THE EMOTIONAL IMPACT OF THE STORY.
- PACING: THE PACING ALLOWS FOR MOMENTS OF INTROSPECTION, INTERSPERSED WITH THE VIBRANT LIFE OF BROOKLYN, CREATING A BALANCED NARRATIVE.

CONCLUSION

"SNOW IN AUGUST" BY PETE HAMILL IS A BEAUTIFULLY CRAFTED NARRATIVE THAT EXPLORES THE INTERSECTIONS OF MEMORY, IDENTITY, AND THE HUMAN EXPERIENCE. THROUGH VIVID IMAGERY, COMPLEX CHARACTERS, AND RICH THEMES, HAMILL INVITES READERS TO REFLECT ON THEIR OWN LIVES AND THE MOMENTS THAT DEFINE THEM. THE JUXTAPOSITION OF SNOW IN SUMMER SERVES AS A POWERFUL METAPHOR FOR THE COMPLEXITIES OF LIFE, REMINDING US THAT EVEN IN THE HEAT OF THE MOMENT, THERE CAN BE MOMENTS OF UNEXPECTED BEAUTY AND REFLECTION. THIS NOVEL REMAINS A TESTAMENT TO HAMILL'S SKILL AS A STORYTELLER AND HIS ABILITY TO CAPTURE THE ESSENCE OF THE HUMAN CONDITION.

FREQUENTLY ASKED QUESTIONS

WHAT IS THE CENTRAL THEME OF 'SNOW IN AUGUST' BY PETE HAMILL?

THE CENTRAL THEME OF 'SNOW IN AUGUST' REVOLVES AROUND THE POWER OF FRIENDSHIP, THE IMPACT OF PREJUDICE, AND THE STRUGGLE FOR IDENTITY, SET AGAINST THE BACKDROP OF POST-WORLD WAR II BROOKLYN.

HOW DOES PETE HAMILL USE THE SETTING TO ENHANCE THE STORY IN 'SNOW IN AUGUST'?

HAMILL USES THE SETTING OF BROOKLYN IN THE LATE 1940S TO CREATE A RICH, IMMERSIVE BACKDROP THAT REFLECTS THE SOCIAL ISSUES OF THE TIME, INCLUDING ETHNIC TENSIONS AND THE INFLUENCE OF COMMUNITY ON PERSONAL GROWTH.

WHO ARE THE MAIN CHARACTERS IN 'SNOW IN AUGUST' AND WHAT ROLES DO THEY PLAY?

THE MAIN CHARACTERS INCLUDE A YOUNG BOY NAMED HENRY AND A RABBI NAMED DAVID. THEIR FRIENDSHIP TRANSCENDS CULTURAL BARRIERS AND ILLUSTRATES THEMES OF COMPASSION AND UNDERSTANDING IN A DIVIDED SOCIETY.

WHAT ROLE DOES MAGIC REALISM PLAY IN 'SNOW IN AUGUST'?

MAGIC REALISM IN 'SNOW IN AUGUST' SERVES TO BLEND THE FANTASTICAL ELEMENTS OF THE STORY WITH THE HARSH REALITIES OF LIFE, PARTICULARLY THROUGH THE MYSTICAL EXPERIENCES OF HENRY AND THE LESSONS HE LEARNS.

HOW DOES 'SNOW IN AUGUST' ADDRESS THE ISSUE OF ANTI-SEMITISM?

THE NOVEL ADDRESSES ANTI-SEMITISM BY PORTRAYING THE STRUGGLES AND DISCRIMINATION FACED BY THE JEWISH COMMUNITY IN BROOKLYN, AS WELL AS HIGHLIGHTING THE IMPORTANCE OF EMPATHY AND HUMAN CONNECTION IN OVERCOMING SUCH BIASES.

WHAT IS THE SIGNIFICANCE OF THE TITLE 'SNOW IN AUGUST'?

THE TITLE 'SNOW IN AUGUST' SYMBOLIZES THE UNEXPECTED AND THE MAGICAL MOMENTS IN LIFE, SUGGESTING THAT AMIDST THE HEAT OF CONFLICT AND PREJUDICE, THERE CAN BE MOMENTS OF BEAUTY AND HOPE.

Find other PDF article:

<https://soc.up.edu.ph/48-shade/Book?ID=YdU65-9010&title=praxis-5442-practice-test.pdf>

[Snow In August Pete Hamill](#)

What is the Most Common and Rarest Personality Type?

Learn which is the most common personality type and the most rare personality type. Plus the percentage distribution of all MBTI ...

MBTI World Population & MBTI by Country statistics - Typology Triad

MBTI World population statistics, and also MBTI by country (most common types per country and on world).

Most Common (and Rarest) Personality Types [MBTI 2025]

Nov 8, 2024 · The 16 personality types all vary by popularity. Consider where each one falls from most to least common and the ...

Mbti Statistics Statistics: Market Data Report 2025

May 1, 2025 · The Myers-Briggs Type Indicator has been translated into over 30 languages worldwide MBTI type distributions vary by ...

MBTI Statistics: All the Data on Personality Types - Quest In

Jul 27, 2023 · What are MBTI Statistics? MBTI statistics reveal personality differences, personality preferences, and rare ...

Burchfiel Dental

Omaha dentist, Burchfiel Dental is a local, trusted dental practice offering general and cosmetic

dentistry, teeth whitening, implants, veneers & other dental care.

Burchfiel Dental - Dentist in Omaha, NE - 68154 - 402-492-9398

At Burchfiel Dental, we are committed to providing superior dental care and are proud of our dedication to our patients. Our goal is to help you feel and look your best while focusing on ...

Burchfiel Dental PC: Burchfiel T Patrick DDS

At Burchfiel Dental, Dr. Pat Burchfiel and our entire Omaha dentistry team are dedicated to providing the most thorough and advanced dentistry care available in the most relaxing ...

[Burchfiel Dental | Omaha NE - Facebook](#)

Burchfiel Dental, Omaha, Nebraska. 533 likes · 6 talking about this · 61 were here.

www.BurchfielDental.com

Dr. Timothy Pat Burchfiel - Dentist in Omaha, NE

Sep 5, 2007 · Dr. Timothy Pat Burchfiel is the primary dental care provider for patients of all ages. He is responsible for the diagnosis, treatment, management and overall coordination of ...

Omaha, NE Dentist - Burchfiel Dental

Omaha dentist, Burchfiel Dental is a local, trusted dental practice offering general and cosmetic dentistry, teeth whitening, implants, veneers & other dental care.

BURCHFIEL DENTAL - Updated July 2025 - 25 Reviews - Yelp

At Burchfiel Dental, we are committed to providing superior dental care and are proud of our dedication to our patients. Our goal is to help you feel and look your best while focusing on ...

Burchfiel Dental - Omaha, NE 68154 - Request Appointment

Burchfiel Dental - 628 N 129th St Omaha, NE 68154. See their team of Dentists, read patient reviews, make an appointment online for free 24/7.

Dr. Timothy Burchfiel, Dentistry | Omaha, NE | WebMD

With a dental savings plan, members can save 10-60% at the dentist. Click here to learn more. We know that finding the right doctor or provider is important to your health. That's why we ...

Burchfiel Dental PC: Burchfiel T Patrick DDS - Birdeye

Find reviews, ratings, directions, business hours, and book appointments online.

Explore the poignant themes of 'Snow in August' by Pete Hamill. Discover how this powerful story intertwines love and loss in a changing world. Learn more!

[Back to Home](#)