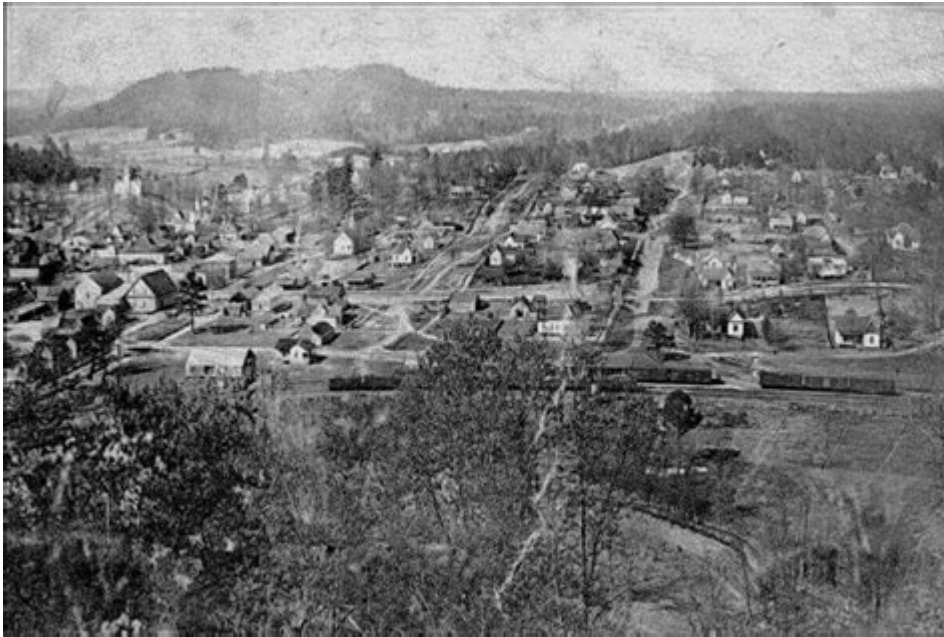


Smith Lake Alabama History



Smith Lake, Alabama, is a picturesque reservoir nestled in the heart of Alabama, offering both natural beauty and a rich tapestry of history. The lake, officially known as Lewis Smith Lake, was formed in the 1950s with the construction of the Smith Dam by the Alabama Power Company. This man-made marvel has since become a focal point for recreation, tourism, and local culture. Understanding the history of Smith Lake is essential to grasping its significance in the region.

Formation and Early Development

The Alabama Power Company and the Need for Hydropower

The roots of Smith Lake can be traced back to the early 20th century when Alabama Power Company was established to meet the growing demand for electricity. As the population and industry expanded, the need for reliable energy sources became paramount. The company sought to harness the natural resources of the region, leading to the construction of several hydroelectric dams.

- **Dam Construction:** In the 1950s, Alabama Power began the construction of the Smith Dam on the Sipsey Fork, a tributary of the Black Warrior River.
- **Completion:** The dam was completed in 1961, and the resulting reservoir, now known as Smith Lake, flooded over 20,000 acres of land.

Impact on the Local Community

The creation of Smith Lake had profound effects on the local communities:

1. **Displacement of Residents:** Many families were displaced as their homes were submerged by the rising waters. The project necessitated the relocation of several towns, including the community of Houston.
2. **Economic Opportunities:** While some residents lost their homes, the lake also brought new economic opportunities. Construction jobs were created during the dam's development, and the influx of visitors led to the growth of local businesses.
3. **Recreation and Tourism:** The lake quickly became a popular destination for fishing, boating, and swimming, leading to the establishment of numerous recreational facilities.

Smith Lake in the Modern Era

Recreation and Tourism Growth

As the decades passed, Smith Lake transformed into a recreational hub for both locals and tourists. The clear waters, scenic views, and abundant wildlife attracted visitors from across the Southeast.

- **Fishing:** The lake is renowned for its fishing opportunities, particularly for species such as bass, crappie, and catfish. Fishing tournaments are regularly held, drawing competitors from near and far.
- **Water Sports:** With its vast expanse, Smith Lake is ideal for water sports such as jet skiing, wakeboarding, and kayaking.
- **Camping and Hiking:** The surrounding areas offer numerous camping sites and hiking trails, allowing visitors to experience the natural beauty of Alabama's landscape.

Residential Development and Second Homes

The allure of Smith Lake has led to significant residential development over the years.

- **Real Estate Boom:** The demand for waterfront properties surged, resulting in a boom in real estate development. Many people began purchasing second homes or vacation properties along the lake.
- **Community Growth:** This growth has fostered the development of communities that cater to both full-time residents and seasonal visitors, offering amenities such as marinas, restaurants, and recreational facilities.

Environmental Considerations

Preservation Efforts

As the popularity of Smith Lake has grown, so too have concerns regarding environmental preservation.

- **Water Quality:** Maintaining water quality is paramount, as increased development can lead to pollution and habitat destruction. Local organizations have been established to monitor and protect the lake's ecosystem.
- **Wildlife Conservation:** Efforts are underway to conserve the diverse wildlife that inhabits the region, including fish species and migratory birds.

Community Involvement

Local residents and organizations play a critical role in environmental stewardship.

1. **Volunteer Clean-Up Initiatives:** Community groups regularly organize clean-up events to remove litter and debris from the lake and its surrounding areas.
2. **Educational Programs:** Schools and local organizations provide educational programs focused on the importance of conservation and sustainable practices.

Cultural Significance

Smith Lake's Role in Community Identity

The history of Smith Lake is woven into the fabric of local culture, influencing community events, traditions, and identity.

- **Annual Festivals:** Numerous festivals and events celebrate the lake, such as fishing tournaments and summer concerts.
- **Local Art and Music:** Artists and musicians often draw inspiration from the natural beauty of the lake, contributing to a vibrant local arts scene.

Historical Landmarks and Heritage Sites

The lake area is home to several historical landmarks that reflect its rich heritage.

- Old Towns and Ruins: Remnants of communities that were displaced by the lake, including old cemeteries and foundations, serve as poignant reminders of the past.
- Cultural Institutions: Museums and cultural centers in nearby towns preserve and promote the history and traditions of the region.

Challenges and Future Prospects

Urban Development and Growth Pressures

While the growth of Smith Lake has brought many benefits, it has also posed challenges that need to be addressed.

- Overdevelopment Concerns: Rapid development raises concerns about overpopulation, increased traffic, and the potential degradation of the natural environment.
- Infrastructure Needs: As more people flock to the lake, the need for improved infrastructure, such as roads, utilities, and public services, becomes increasingly urgent.

Looking Ahead

The future of Smith Lake is likely to be shaped by how residents, local governments, and organizations balance growth with preservation.

1. Sustainable Practices: Emphasizing sustainable development will be crucial to maintaining the lake's natural beauty and ecological health.
2. Community Engagement: Continuing to involve local communities in decision-making processes regarding land use and conservation efforts will help ensure that the lake remains a cherished resource for generations to come.

In conclusion, the history of Smith Lake, Alabama, is a compelling narrative that encompasses the interplay of nature, community, and industry. From its formation as a hydroelectric reservoir to its current status as a key recreational and residential area, the lake reflects the changing dynamics of Alabama's landscape and culture. As the community navigates the challenges of growth and environmental preservation, the legacy of Smith Lake will undoubtedly continue to evolve, serving as a testament to the resilience and

adaptability of both its natural environment and its people.

Frequently Asked Questions

What is the historical significance of Smith Lake in Alabama?

Smith Lake, created by the construction of the Lewis Smith Dam in the 1960s, is significant for its role in flood control, hydroelectric power generation, and as a recreational area, influencing local development and tourism.

When was Smith Lake officially created?

Smith Lake was officially created in 1961 when the Lewis Smith Dam was completed, flooding the valley and forming the lake.

Which communities were affected by the creation of Smith Lake?

The creation of Smith Lake led to the flooding of several communities, including the town of Smithville, and displaced many residents, altering the local landscape and history.

What types of recreational activities are popular at Smith Lake?

Smith Lake is popular for various recreational activities, including boating, fishing, swimming, and camping, attracting tourists and locals alike.

How has Smith Lake impacted local wildlife?

Smith Lake has created a unique ecosystem that supports various wildlife, including fish species like bass and crappie, as well as birds and other aquatic life, contributing to biodiversity in the region.

What role does Smith Lake play in Alabama's energy production?

Smith Lake plays a crucial role in Alabama's energy production by providing hydroelectric power through the Lewis Smith Dam, contributing to the state's renewable energy resources.

Are there any historical landmarks around Smith Lake?

Yes, there are several historical landmarks around Smith Lake, including remnants of the old town of Smithville and various structures that reflect the region's history before the lake was formed.

What is the cultural impact of Smith Lake on the surrounding

communities?

Smith Lake has had a significant cultural impact, fostering a sense of community through events like fishing tournaments and festivals, and serving as a gathering place for families and friends.

How has Smith Lake changed over the decades since its creation?

Since its creation, Smith Lake has evolved from a primarily industrial site to a vibrant recreational hub, with increased development of homes, businesses, and facilities catering to tourism and local residents.

Find other PDF article:
<https://soc.up.edu.ph/62-type/Book?trackid=mvv83-9518&title=three-samurai-cats.pdf>

Smith Lake Alabama History

Smith Lake? - Smith
Smith LakeB...

EndNoteSmith Lake - Smith
EndNoteSmith Lake

Smith et alSmith Lake - Smith
Smith et al. argue that... et al. Smith et al. et al. alia Smith et al. (2021) reported that... et al. Smith ...

originSmith Lake/hfss - Smith
Oct 20, 2024 · 1originSmith Lake 1originSmith Lake (magangle) 2 ...

SmithSmith Lake ...
SmithSmith Lake ...

EdgeSmith Lake - Smith
EdgeSmith Lake

Adam Smith - Smith
Adam Smith172365—1790717Smith Lake · Smith ...

Smith Lake - Smith
May 16, 2017 · Catalogue of Life wiki Home | Catalogue of Life 2017 ...

Smith Lake - Smith

