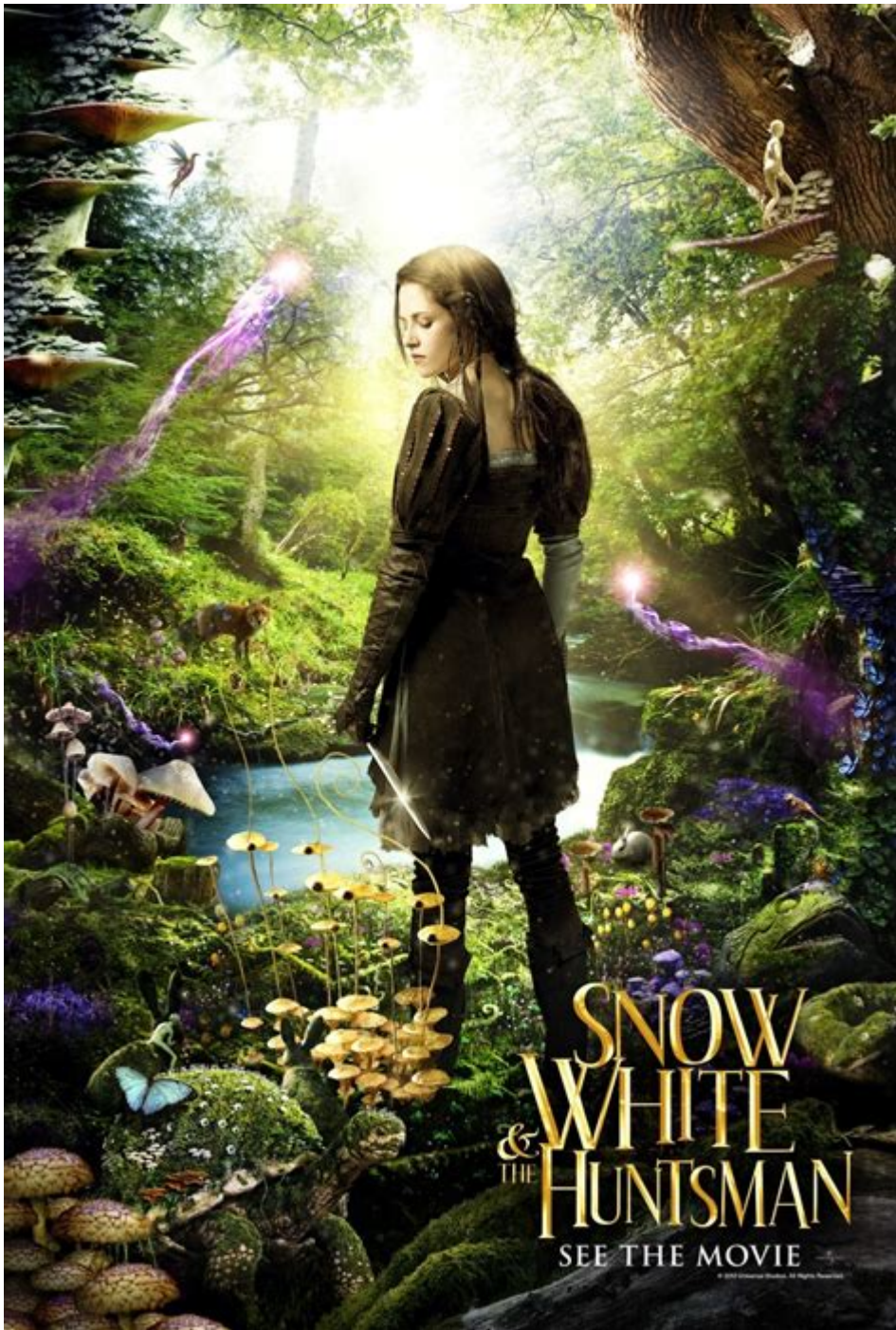


Snow White And The Huntsman Story



Snow White and the Huntsman is a dark fantasy film that reimagines the classic fairy tale of Snow White, originally penned by the Brothers Grimm. Released in 2012 and directed by Rupert Sanders, the film stars Kristen Stewart as Snow White, Chris Hemsworth as the Huntsman, and Charlize Theron as the wicked Queen Ravenna. This version of the tale diverges significantly from the traditional narrative, offering a more adult-oriented interpretation that emphasizes themes of power, revenge, and the complexities of human emotion.

The Origins of Snow White

Historical Context

The story of Snow White can be traced back to various European folk tales, with the Brothers Grimm's version published in 1812 being the most recognizable. The tale has undergone numerous adaptations, each altering elements to fit contemporary audiences. The 2012 film stands out for its darker, more intense portrayal of the characters and their motivations.

The Brothers Grimm

The Brothers Grimm, Jacob and Wilhelm, were German scholars who collected and published folklore during the early 19th century. Their version of Snow White features classic motifs like the evil queen, the enchanted mirror, and the seven dwarfs. This narrative focuses on themes of jealousy, innocence, and the ultimate triumph of good over evil, which serve as a foundational backdrop for many adaptations, including the 2012 film.

A New Take on a Classic Tale

Plot Overview

In "Snow White and the Huntsman," the storyline deviates from the original fairy tale in significant ways. The film begins with the backstory of Queen Ravenna, who is portrayed as a powerful sorceress. After marrying a king, she murders him and takes control of the kingdom, ruling with fear and cruelty.

Snow White, the king's daughter, is imprisoned in the castle for years until she escapes into the dark forest. The Huntsman, initially sent to retrieve her, ultimately becomes her ally. The narrative unfolds through several critical plot points:

1. The Queen's Dark Reign: Queen Ravenna uses dark magic to maintain her youth and beauty, drawing power from the life force of young women.
2. Snow White's Escape: After years of captivity, Snow White escapes and discovers the harsh realities of the world outside the castle.
3. The Huntsman as a Mentor: The Huntsman, portrayed as a rugged warrior, teaches Snow White how to survive in the wilderness, ultimately guiding her toward her destiny.
4. The Battle for the Kingdom: The climax builds around the confrontation between Snow White and Queen Ravenna, embodying the struggle between good and evil.

Character Development

The film places a significant focus on character development, providing depth to the traditionally one-dimensional roles found in the original tale.

Snow White

In this adaptation, Snow White is not merely a passive character waiting for rescue. She is portrayed as a strong and resilient young woman who evolves throughout her journey. Initially depicted as a frightened princess, her character grows into a leader, rallying forces to reclaim her birthright and challenge the tyranny of her stepmother.

Queen Ravenna

Charlize Theron's portrayal of Queen Ravenna adds layers to the character, presenting her not just as a villain but as a tragic figure shaped by betrayal and the quest for power. The film explores her vulnerability, showcasing her reliance on dark magic and her fear of losing her beauty and power.

The Huntsman

Chris Hemsworth's character, the Huntsman, is a complex figure who grapples with his own demons. Initially motivated by money and the Queen's coercion, he undergoes a transformation as he bonds with Snow White. His character serves as a mentor and protector, adding a sense of depth to the narrative.

Themes and Motifs

The Power of Beauty

One of the most prominent themes in "Snow White and the Huntsman" is the power of beauty and its consequences. Queen Ravenna's obsession with her appearance drives her actions, leading to her downfall. This theme is reflected in the enchanted mirror that constantly reminds her of her waning beauty. The film critiques societal standards of beauty and the lengths to which individuals will go to maintain it.

The Journey of Self-Discovery

Snow White's journey is not only about reclaiming her throne but also about self-discovery. Throughout her trials, she learns to harness her inner strength and courage. The film emphasizes that true power comes from within, and it is through her experiences that Snow White transforms from a frightened girl into a determined leader.

Darkness vs. Light

The dichotomy of light and darkness is a recurring motif in the film. The dark forest symbolizes the unknown and the challenges Snow White faces, while the light represents hope and rebirth. This contrast highlights the struggle between good and evil, making the narrative rich with visual symbolism.

Cinematic Elements

Visual Style

The film is noted for its stunning visual effects and cinematography. The dark, brooding landscapes of the enchanted forest contrast with the opulence of Ravenna's castle, creating a visually captivating experience. The use of color plays a significant role, with dark hues representing evil and vibrant colors symbolizing hope and life.

Soundtrack

The score, composed by James Newton Howard, enhances the film's emotional depth. The music underscores the tension of battle scenes and the poignant moments of character development, further immersing the audience in the story.

Reception and Impact

Box Office Success

"Snow White and the Huntsman" was a commercial success, grossing over \$396 million worldwide. Its unique take on a beloved fairy tale resonated with audiences, leading to discussions about the evolution of fairy tales in modern cinema.

Critical Response

The film received mixed reviews from critics. While some praised its visual style and performances, particularly those of Theron and Hemsworth, others criticized the pacing and the film's divergence from the original tale. Nonetheless, it sparked interest in darker adaptations of classic stories, influencing subsequent films in the genre.

Conclusion

"Snow White and the Huntsman" is a thought-provoking reimagining of the classic fairy tale that explores deeper themes of beauty, power, and self-discovery. By presenting complex characters and a darker narrative, the film invites viewers to reflect on the moral complexities inherent in the pursuit of power and the nature of good versus evil. Its visual splendor and compelling performances make it a standout adaptation that continues to captivate audiences, reaffirming the timeless appeal of fairy tales in contemporary culture.

Frequently Asked Questions

What is the main plot of 'Snow White and the Huntsman'?

The film follows Snow White, who escapes from her evil stepmother, Queen Ravenna, with the help of a huntsman. Together, they seek to defeat the queen and restore peace to the kingdom.

How does 'Snow White and the Huntsman' differ from the traditional Snow White story?

Unlike the traditional tale, 'Snow White and the Huntsman' presents a darker, more action-oriented narrative, focusing on themes of empowerment and revenge, with Snow White taking on a more active role.

Who are the main characters in 'Snow White and the Huntsman'?

The main characters include Snow White (Kristen Stewart), Queen Ravenna (Charlize Theron), the Huntsman (Chris Hemsworth), and William (Sam Claflin).

What role does the Huntsman play in the story?

The Huntsman is initially sent to kill Snow White but instead becomes her protector and mentor, helping her grow into a leader capable of challenging the queen.

What are the visual themes present in 'Snow White and the Huntsman'?

The film features striking visuals, with a blend of dark and ethereal elements, showcasing enchanted forests, gothic castles, and fantastical creatures that enhance the fairy tale atmosphere.

How does the character of Queen Ravenna contribute to the story's conflict?

Queen Ravenna, driven by vanity and the need for power, seeks to eliminate Snow White to maintain her youthful beauty and dominance, creating the central conflict of the story.

What message does 'Snow White and the Huntsman' convey about beauty and power?

The film critiques the obsession with beauty and power, illustrating how these desires can lead to destruction and the importance of inner strength over superficial appearances.

What was the critical reception of 'Snow White and the Huntsman'?

The film received mixed reviews, with praise for its visual effects and performances, particularly by Charlize Theron, while some criticized the pacing and character development.

Find other PDF article:

<https://soc.up.edu.ph/64-frame/pdf?ID=qaU71-7161&title=venkatesh-gang-leader-for-a-day.pdf>

[Snow White And The Huntsman Story](#)

Decoding facebook's blob video url - Stack Overflow

Facebook downloads the audio and the video separately, so get the audio link from the google chrome inspector, by right click on the video and choosing ...

Facebook share link - can you customize the message body ...

Feb 17, 2011 · Facebook will not allow developers pre-fill messages. Developers may customize the story by providing OG meta tags, but it's up ...

How to resolve Facebook Login is currently unavailable for thi...

Jul 28, 2021 · In the facebook developers console for your app, go to App Review-> Permissions and Features. Set the public_profile and ...

Programmatically getting an access token for using the Fac...

Jun 17, 2010 · In particular, point to the 'installation' docs for the facebook SDK, and then show how to import facebook, construct a client object, and then ...

How to embed a facebook page in an iframe? - Stack Overflow

It doesn't work, Browser do not allow to load local files to iframe, if you try to load an html from the server you get "Refused to display ' ...

Te Mata Photo, photographe de tahiti

Notre photographe vous propose des séances photo unique sur Tahiti. Notre photographe vous propose aussi le service de numérisation et retouche d'anciennes photos.

Te Mata Photo Photographe et labo Photo Tahiti | Arue - Facebook

PHOTOGRAPHE TAHITI PHOTOS D IDENTITE DE STUDIO ET LABO PHOTO.

Photographie dans Arue (Polynésie française) - Cybo

Meilleur Photographie à Arue (Polynésie française). Kirianu Photography, Te Mata Photo Studio, Tahiti Zoom, Alikaphoto photographe Tahiti, Nicolas Hirigoyen - Photographe à Tahiti, Moana ...

TE MATA PHOTO à Arue - polynesiepratique.com

Réalisation de mug, cadre, porte-clé, etc. avec vos photos, photo d'identité aux normes, tirages photo.

TE MATA PHOTO | BIG-CE

Votre studio photo à Arue et Tamanu Punaauia ! L'équipe de photographes professionnels de TE MATA PHOTO vous propose d'immortaliser vos plus beaux moments et vous accompagne ...

Te Mata Photo Photographe et labo Photo Tahiti, Arue (2025)

Mar 4, 2025 · Avec ce studio photo ouvert depuis près de 10 ans maintenant, Tatiana Salmon, photographe professionnelle, ainsi que toute l'équipe, mettent à disposition du grand public ...

Kirianu Production - Tahiti, Arue (2025) - Find Local Businesses

Sep 16, 2023 · Voici mes planches tarifaires pour les shootings photos 📷. Le concours se fait uniquement sur mon compte Instagram ! () - 📷📷📷📷📷📷📷📷 la ou les personne (s) avec qui tu aimerais faire ...

Photos d'identité - photographe de Tahiti - Te Mata Photo

Profitez de nos photos d'identité de qualité, prises dans notre studio. Cartes d'identité, passeports, VISA, permis... : les photos d'identité officielles doivent satisfaire à des normes ...

Photographes - Photographies - Vidéos

Réalisation de mug, cadre, porte-clé, etc. avec vos photos, photo d'identité aux normes, tirages photo.

Te Mata Photo Photographe et labo Photo Tahiti - Facebook

Jul 19, 2019 · Chez Te Mata Photo Studio (Arue et maintenant TAMANU ITI), les photos d'identité sont réalisées dans les conditions d'un studio photo et les photos...

Explore the enchanting 'Snow White and the Huntsman' story

[Back to Home](#)