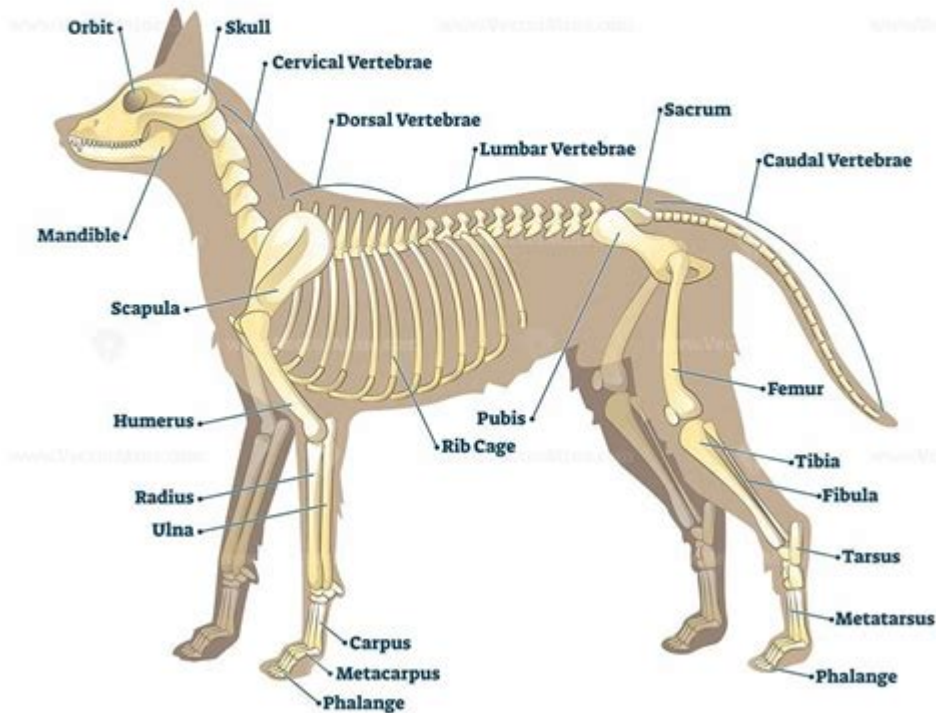


Skeletal Anatomy Of A Dog

ANATOMY OF A DOG



Skeletal anatomy of a dog is a fascinating subject that reveals much about the canine form and function. Understanding the skeletal structure of dogs not only enriches our knowledge as pet owners but also aids in recognizing potential health issues and provides insights into their evolutionary adaptations. Dogs, as descendants of wolves, exhibit a skeletal framework that supports their agility, strength, and various behaviors. In this article, we will delve into the different components of a dog's skeleton, their functions, and how they contribute to the overall well-being of our furry companions.

Overview of Canine Skeletal Anatomy

The skeletal system of a dog comprises approximately 319 bones, although this number can vary slightly depending on the breed. The skeleton is generally divided into two main parts: the axial skeleton and the appendicular skeleton.

Axial Skeleton

The axial skeleton forms the central axis of the body and is primarily composed of the following:

- **Skull:** Protects the brain and houses the sensory organs.
- **Vertebral Column:** Composed of individual vertebrae that protect the spinal cord and provide structural support.
- **Rib Cage:** Protects vital organs such as the heart and lungs, composed of ribs and the sternum.

Appendicular Skeleton

The appendicular skeleton includes the bones of the limbs and is essential for mobility. It consists of:

- **Forelimbs:** Includes the scapula, humerus, radius, and ulna.
- **Hind Limbs:** Comprises the pelvis, femur, tibia, and fibula.
- **Feet:** Contains the carpal bones in the front and tarsal bones in the back, along with metacarpal and metatarsal bones and phalanges (toes).

Detailed Structure of the Canine Skull

The dog's skull is a complex structure that varies significantly across breeds, affecting their appearance and functionality. The skull can be divided into two main parts:

Cranial Bones

The cranial bones protect the brain and support the structures of the face. Key components include:

- **Frontal Bone:** Forms the forehead region.
- **Parietal Bones:** Located on the top of the skull, these bones protect the brain.
- **Occipital Bone:** Found at the back of the skull, it connects the skull to the vertebral column.
- **Temporal Bones:** Located on the sides of the skull, housing the structures of the ear.

Facial Bones

The facial bones give shape to the face and provide attachment points for muscles. Important components include:

- **Nasal Bones:** Form the bridge of the nose.
- **Maxilla:** The upper jawbone, containing the upper teeth.
- **Mandible:** The lower jawbone, which is movable and allows for chewing.
- **Zygomatic Bones:** Also known as cheekbones, these provide structure to the face.

The Vertebral Column

The vertebral column, or spine, consists of a series of vertebrae that provide support and flexibility. It is divided into five regions:

- **Cervical Vertebrae:** Seven vertebrae in the neck region.
- **Thoracic Vertebrae:** Twelve vertebrae that articulate with the ribs.
- **Lumbar Vertebrae:** Five vertebrae in the lower back, providing strength and flexibility.
- **Sacral Vertebrae:** Usually fused into a single sacrum, connecting to the pelvis.
- **Coccygeal Vertebrae:** The tail vertebrae, which vary in number.

The Rib Cage

The rib cage is crucial for protecting the thoracic organs. It consists of:

- **Ribs:** Typically, dogs have 13 pairs of ribs, which attach to the thoracic vertebrae.
- **Sternum:** Also known as the breastbone, it provides a central anchor point for the ribs.

Forelimb Structure

The forelimbs of dogs are adapted for running, jumping, and various activities. The key bones include:

- **Scapula:** The shoulder blade, which connects the forelimb to the body.
- **Humerus:** The bone of the upper forelimb.
- **Radius and Ulna:** The two bones of the lower forelimb that allow for movement.
- **Carpal Bones:** Eight small bones forming the wrist.
- **Metacarpals:** Five bones that support the paw.
- **Phalanges:** The toe bones, with each paw typically having five toes.

Hind Limb Structure

The hind limbs are essential for propulsion and support. They consist of:

- **Pelvis:** A bony structure that connects the hind limbs to the vertebral column.
- **Femur:** The thigh bone, the longest bone in a dog's body.
- **Tibia and Fibula:** The bones of the lower hind limb.
- **Tarsal Bones:** The ankle bones that form the hock joint.
- **Metatarsals:** The bones that form the arch of the foot.
- **Phalanges:** The toe bones, similar to those in the forelimb.

Importance of Skeletal Health

Understanding the skeletal anatomy of a dog helps pet owners recognize signs of skeletal issues, such as:

- **Hip Dysplasia:** A common genetic disorder affecting the hip joint.

- **Arthritis:** A degenerative joint disease that can affect mobility.
- **Fractures:** Can occur due to trauma or excessive stress on the bones.

Regular veterinary check-ups, proper nutrition, and adequate exercise are essential for maintaining skeletal health. Additionally, understanding breed-specific needs can help in preventing skeletal problems.

Conclusion

The **skeletal anatomy of a dog** is a remarkable system that facilitates movement, protects vital organs, and supports the dog's overall structure. By familiarizing ourselves with this anatomy, we can better care for our canine companions, ensuring they lead healthy, active lives. Whether you're a seasoned dog owner or a newcomer to the world of dogs, understanding their skeletal structure is crucial for promoting their well-being and addressing any potential health concerns.

Frequently Asked Questions

What are the main components of a dog's skeletal system?

The main components of a dog's skeletal system include the skull, vertebral column, ribs, forelimbs (scapula, humerus, radius, ulna), hind limbs (pelvis, femur, tibia, fibula), and the bones of the paws.

How many bones are typically found in an adult dog's body?

An adult dog typically has between 319 to 321 bones, depending on the breed and variations in tail length.

What is the function of the dog's skull?

The skull protects the brain, supports the structures of the face, and houses the sensory organs, such as the eyes and ears.

What is the difference between the forelimb and hind limb skeletal structures in dogs?

The forelimb structure is primarily adapted for weight bearing and movement, consisting of the scapula, humerus, radius, and ulna, while the hind limb structure is designed for propulsion and support, comprising the pelvis, femur, tibia, and fibula.

What role do the vertebrae play in a dog's skeletal anatomy?

The vertebrae form the vertebral column, which protects the spinal cord, supports the head, and provides flexibility for movement.

How does a dog's skeletal structure adapt for different breeds and sizes?

Dog breeds vary widely in size and shape, leading to differences in bone density, length, and overall skeletal structure, which adapt to their specific functional needs, such as speed, strength, or agility.

What are the common skeletal disorders that can affect dogs?

Common skeletal disorders in dogs include hip dysplasia, osteoarthritis, cruciate ligament injuries, and bone fractures.

How does nutrition impact the skeletal health of a dog?

Proper nutrition, including adequate calcium and phosphorus, is essential for healthy bone development and maintenance, helping to prevent skeletal disorders and fractures.

What is the significance of the canine dental anatomy in relation to the skull?

The canine dental anatomy is integral to the skull as it includes the arrangement of teeth, which is essential for their feeding habits, social interactions, and overall health.

Find other PDF article:

<https://soc.up.edu.ph/03-page/Book?trackid=KTS81-4800&title=a-girls-21st-century-guide-to-sex.pdf>

Skeletal Anatomy Of A Dog

WOOF Large Pupsicle Pack - Pupsicle Interactive Dog Toys with ...

Our stimulating dog toys provide safe, clean, and long-lasting fun for your dog—and a little peace for you. Instructions : Delicious & Extra Long Lasting: Pupsicle Refill Pops make for the perfect ...

Woof & Co. Fashion Plush French Bulldog, Skyler, 15inch ... - Walmart...

When it comes to fashion, Woof & Co. is the ultimate trendsetter pack! From sidewalk struts to campground concerts, these pups know how to make a statement. Paws up, stand tall, and show ...

WOOF X-Large Pupsicle Pack - Walmart.com

Great Dog Chew Treats Use Great Ingredients: Pupsicle Refill Pops are delicious natural dog treats made with high-quality ingredients you can trust and pronounce. They include beef plasma, ...

Woof & Co. Available at Walmart on August 4 - YouTube

Have you heard of the Woof & Co. pups? Meet Willow, Finley, Lily, Piper, Skyler and Briana! These six pups feature best-in-show friendship, trendsetting looks, and a whole lot of personality!

Sassy Woof - Walmart.com

Shop items from Sassy Woof at Walmart.com and learn more about how you can save money on the

best Sassy Woof products to help you live better.

Woof & Co - New Puppy Dolls @ Walmart \$29.98 - YouTube

Jul 20, 2025 · Enjoy the Video!

Woof Dog Beef Peanut Butter Pops Large 8Oz - Walmart.com

Pupsicles Refill Pops are delicious dog treats made with only high-quality ingredients including beef plasma, peanut butter, tapioca starch, beef tallow, date syrup, glycerin, lecithin, gelatin, and ...

Store Locator - Woof

Discover the Pupsicle by Woof. The Pupsicle is the world's best dog toy. It's great for training, entertaining puppies, aggressive chewers, and more. If you're looking for a long lasting treat toy, ...

WOOF Bully Sticks Dog Treats - Chew Sticks for Dogs - Walmart...

Every dog deserves a delicious bully stick reward, and every pet parent deserves a moment of peace. High-Quality, Long-Lasting Dog Treats: Indulge your furry friend with a delicious and ...

Woof & Co. Fashion Plush Golden Retriever, Briana, 15inch, ...

When it comes to fashion, Woof & Co. is the ultimate trendsetter pack! From sidewalk struts to campground concerts, these pups know how to make a statement. Paws up, stand tall, and show ...

Online Banking, Mortgages, Personal Loans, Investing | Citi.com

Citibank offers multiple banking services that help you find the right credit cards, open a bank account for checking, & savings, or apply for mortgage & personal loans.

Citibank Online

Citibank Online ... Citibank Online

Citi ThankYou® Rewards ? Sign On

Citi® Card / Banking Use primary cardmember's Citi Online User ID and password.

oAuth Sign On - Citibank

Log in to Citibank to manage your accounts, view balances, transfer funds, and access various banking services securely online.

Citibank Online - Citi Ventures

Discover Citibank's online banking services, offering innovative solutions for managing your finances conveniently and securely.

Citibank®: Online Bill Payment - Citibank - Citi Ventures

Citibank® cuts down your paperwork with online bill payment. Pay bills online to anyone, anywhere at no additional cost. Send one-time payments and receive regular bill payment alerts.

Citi ThankYou® Mastercard® - Log In or Apply

Sign on and manage your credit card account. Don't have an account? Apply online today.

Citi Pay Credit

Register or log in to your Citi Pay Credit Account Online, then navigate to your Account Profile and select Details to view your account number.

Signing on to Citi Online - citibank.com

< Previous: Registering for Citi Online Next: Using your personal My Citi dashboard >

Explore the skeletal anatomy of a dog in-depth! Understand its structure

[Back to Home](#)