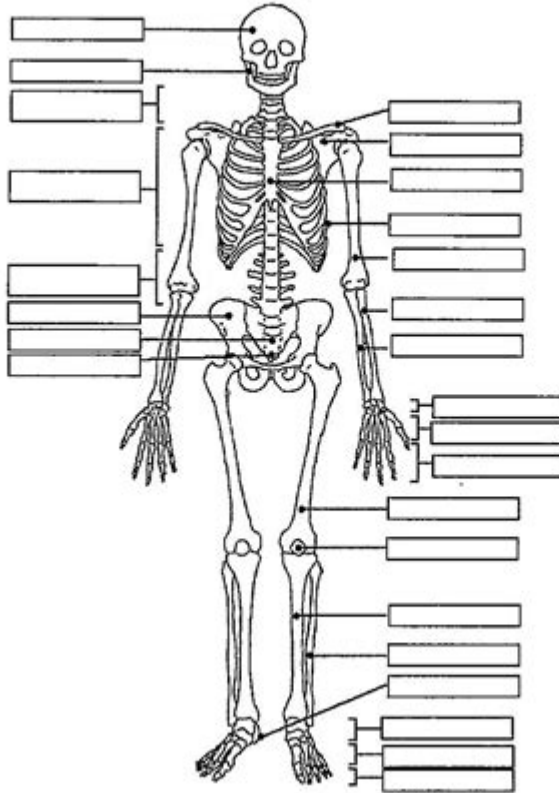


Skeletal System Blank Diagram

. Using the diagram below, **shade in only those bones of the axial skeleton.**



SKELETAL SYSTEM BLANK DIAGRAM SERVES AS AN ESSENTIAL EDUCATIONAL TOOL FOR UNDERSTANDING THE HUMAN SKELETAL FRAMEWORK. THIS DIAGRAM TYPICALLY FEATURES A SIMPLIFIED OUTLINE OF THE HUMAN SKELETON, DEVOID OF LABELS OR DETAILS, ALLOWING STUDENTS, EDUCATORS, AND MEDICAL PROFESSIONALS TO ENGAGE WITH THE MATERIAL ACTIVELY. BY FILLING IN THE BLANKS, INDIVIDUALS CAN REINFORCE THEIR KNOWLEDGE OF THE BONES, THEIR NAMES, LOCATIONS, AND FUNCTIONS, MAKING IT AN INVALUABLE RESOURCE IN ANATOMY AND PHYSIOLOGY.

UNDERSTANDING THE SKELETAL SYSTEM

THE SKELETAL SYSTEM IS A COMPLEX STRUCTURE MADE UP OF BONES, CARTILAGE, LIGAMENTS, AND JOINTS. IT PROVIDES THE FRAMEWORK FOR THE BODY, SUPPORTS AND PROTECTS VITAL ORGANS, FACILITATES MOVEMENT, AND SERVES AS A RESERVOIR FOR MINERALS. THE HUMAN SKELETON CONSISTS OF 206 BONES IN THE ADULT BODY, WHICH CAN BE CATEGORIZED INTO TWO MAIN DIVISIONS: THE AXIAL SKELETON AND THE APPENDICULAR SKELETON.

AXIAL SKELETON

THE AXIAL SKELETON COMPRISES 80 BONES, INCLUDING:

1. **SKULL:** PROTECTS THE BRAIN AND SUPPORTS FACIAL STRUCTURE.
2. **VERTEBRAL COLUMN:** COMPOSED OF 33 VERTEBRAE, IT PROTECTS THE SPINAL CORD AND PROVIDES STRUCTURAL SUPPORT.
3. **RIB CAGE:** CONSISTS OF 12 PAIRS OF RIBS AND THE STERNUM, PROTECTING THE HEART AND LUNGS.

APPENDICULAR SKELETON

THE APPENDICULAR SKELETON CONSISTS OF 126 BONES AND INCLUDES:

- UPPER LIMBS:
 - HUMERUS
 - RADIUS
 - ULNA
 - CARPALS (WRIST)
 - METACARPALS (HAND)
 - PHALANGES (FINGERS)
- LOWER LIMBS:
 - FEMUR
 - PATELLA (KNEECAP)
 - TIBIA
 - FIBULA
 - TARSALS (ANKLE)
 - METATARSALS (FOOT)
 - PHALANGES (TOES)

IMPORTANCE OF THE SKELETAL SYSTEM BLANK DIAGRAM

A SKELETAL SYSTEM BLANK DIAGRAM SERVES MULTIPLE EDUCATIONAL PURPOSES. HERE ARE SOME KEY BENEFITS:

- ACTIVE LEARNING: ENGAGING WITH THE DIAGRAM ENCOURAGES ACTIVE PARTICIPATION, WHICH ENHANCES RETENTION AND UNDERSTANDING.
- ASSESSMENT TOOL: IT CAN BE USED DURING QUIZZES AND TESTS TO EVALUATE KNOWLEDGE OF ANATOMY.
- VISUAL AID: A BLANK DIAGRAM HELPS VISUALIZE THE SPATIAL ARRANGEMENT OF BONES IN THE HUMAN BODY.
- CUSTOMIZATION: USERS CAN FILL IN THE DIAGRAM ACCORDING TO THEIR LEARNING NEEDS, ADDING DETAILS LIKE FUNCTIONS, DISEASES, AND ANATOMICAL LANDMARKS.

HOW TO USE A SKELETAL SYSTEM BLANK DIAGRAM

USING A BLANK DIAGRAM EFFECTIVELY CAN BE BROKEN DOWN INTO SEVERAL STEPS:

1. FAMILIARIZE YOURSELF WITH BONE NAMES: BEFORE STARTING, REVIEW THE NAMES OF THE MAJOR BONES IN THE HUMAN SKELETON.
2. LABEL THE DIAGRAM: BEGIN FILLING IN THE DIAGRAM WITH THE NAMES OF BONES FROM THE AXIAL AND APPENDICULAR SKELETONS.
3. USE COLOR CODING: DIFFERENTIATE BETWEEN TYPES OF BONES (E.G., LONG, SHORT, FLAT, IRREGULAR) BY USING DIFFERENT COLORS.
4. ADD FUNCTIONS: ALONGSIDE EACH BONE, NOTE ITS PRIMARY FUNCTION (E.G., PROTECTION, MOVEMENT).
5. STUDY DISEASES AND CONDITIONS: INCLUDE COMMON CONDITIONS RELATED TO SPECIFIC BONES (E.G., OSTEOPOROSIS, FRACTURES) FOR A MORE COMPREHENSIVE UNDERSTANDING.
6. REVIEW AND SELF-TEST: GO OVER THE COMPLETED DIAGRAM AND TEST YOURSELF OR OTHERS ON THE NAMES AND FUNCTIONS OF THE BONES.

COMMON BONES IN THE HUMAN BODY

FOR THOSE USING A SKELETAL SYSTEM BLANK DIAGRAM, IT IS ESSENTIAL TO BE AWARE OF THE MOST SIGNIFICANT BONES IN THE

HUMAN BODY. HERE'S A LIST OF SOME COMMONLY REFERENCED BONES:

- CRANIAL BONES (8 TOTAL):

- FRONTAL
- PARIETAL (2)
- TEMPORAL (2)
- OCCIPITAL
- SPHENOID
- ETHMOID

- FACIAL BONES (14 TOTAL):

- NASAL (2)
- MAXILLA (2)
- ZYGOMATIC (2)
- PALATINE (2)
- LACRIMAL (2)
- NASAL CONCHAE (2)
- VOMER
- MANDIBLE

- VERTEBRAE (33 TOTAL):

- CERVICAL (7)
- THORACIC (12)
- LUMBAR (5)
- SACRAL (5 FUSED)
- COCCYGEAL (4 FUSED)

- RIBS (12 PAIRS):

- TRUE RIBS (1-7)
- FALSE RIBS (8-10)
- FLOATING RIBS (11-12)

- LIMBS:

- HUMERUS
- RADIUS
- ULNA
- FEMUR
- TIBIA
- FIBULA

FUN FACTS ABOUT THE HUMAN SKELETON

LEARNING ABOUT THE SKELETAL SYSTEM CAN BE BOTH EDUCATIONAL AND INTERESTING. HERE ARE SOME FUN FACTS:

- BABY SKELETONS: INFANTS ARE BORN WITH APPROXIMATELY 270 BONES, BUT SOME BONES FUSE TOGETHER DURING GROWTH, RESULTING IN 206 BONES IN ADULTS.
- BONE DENSITY: BONES ARE CONSTANTLY BEING REMODELED. THEY CAN BECOME DENSER WITH WEIGHT-BEARING EXERCISE AND CAN WEAKEN WITH DISUSE.
- SMALLEST BONE: THE STAPES, LOCATED IN THE MIDDLE EAR, IS THE SMALLEST BONE IN THE HUMAN BODY.
- LONGEST BONE: THE FEMUR, OR THIGH BONE, IS THE LONGEST BONE IN THE HUMAN BODY.
- SKELETAL MUSCLE CONNECTION: THE SKELETAL SYSTEM WORKS IN CONJUNCTION WITH THE MUSCULAR SYSTEM TO FACILITATE MOVEMENT THROUGH THE CONTRACTION AND RELAXATION OF MUSCLES ATTACHED TO BONES.

CONCLUSION

A SKELETAL SYSTEM BLANK DIAGRAM IS A POWERFUL EDUCATIONAL RESOURCE THAT FACILITATES A DEEPER UNDERSTANDING OF HUMAN ANATOMY. IT ALLOWS LEARNERS TO ENGAGE ACTIVELY WITH THE MATERIAL, ENHANCES RETENTION, AND PROVIDES A CLEAR VISUAL REPRESENTATION OF THE HUMAN SKELETAL STRUCTURE. BY LEVERAGING THIS TOOL ALONGSIDE OTHER EDUCATIONAL RESOURCES—SUCH AS TEXTBOOKS, LECTURES, AND HANDS-ON ACTIVITIES—STUDENTS CAN BUILD A ROBUST KNOWLEDGE BASE THAT WILL SERVE THEM WELL IN THEIR STUDIES OF BIOLOGY, HEALTH SCIENCES, AND MEDICINE. WHETHER FOR ACADEMIC PURPOSES OR PERSONAL INTEREST, MASTERING THE SKELETAL SYSTEM IS A FUNDAMENTAL ASPECT OF UNDERSTANDING THE HUMAN BODY.

FREQUENTLY ASKED QUESTIONS

WHAT IS A SKELETAL SYSTEM BLANK DIAGRAM USED FOR?

A SKELETAL SYSTEM BLANK DIAGRAM IS USED FOR EDUCATIONAL PURPOSES, ALLOWING STUDENTS TO LABEL AND IDENTIFY THE BONES IN THE HUMAN SKELETON.

WHERE CAN I FIND A BLANK DIAGRAM OF THE SKELETAL SYSTEM?

BLANK DIAGRAMS OF THE SKELETAL SYSTEM CAN BE FOUND IN BIOLOGY TEXTBOOKS, EDUCATIONAL WEBSITES, AND RESOURCES FOR TEACHERS SUCH AS PRINTABLE WORKSHEETS.

HOW CAN I EFFECTIVELY USE A SKELETAL SYSTEM BLANK DIAGRAM FOR STUDYING?

TO EFFECTIVELY USE A SKELETAL SYSTEM BLANK DIAGRAM FOR STUDYING, PRINT IT OUT, LABEL THE BONES, AND QUIZ YOURSELF ON THEIR NAMES AND FUNCTIONS.

WHAT ARE THE MAIN BONES LABELED IN A SKELETAL SYSTEM BLANK DIAGRAM?

MAIN BONES TYPICALLY LABELED INCLUDE THE SKULL, VERTEBRAE, RIBS, STERNUM, HUMERUS, RADIUS, ULNA, FEMUR, TIBIA, AND FIBULA.

ARE THERE ANY ONLINE TOOLS FOR CREATING A SKELETAL SYSTEM BLANK DIAGRAM?

YES, THERE ARE ONLINE TOOLS AND SOFTWARE THAT ALLOW USERS TO CREATE CUSTOMIZABLE SKELETAL SYSTEM DIAGRAMS, SUCH AS CANVA AND GOOGLE DRAWINGS.

WHAT AGE GROUP IS A SKELETAL SYSTEM BLANK DIAGRAM APPROPRIATE FOR?

A SKELETAL SYSTEM BLANK DIAGRAM IS APPROPRIATE FOR A WIDE RANGE OF AGE GROUPS, TYPICALLY FROM ELEMENTARY SCHOOL STUDENTS TO COLLEGE-LEVEL ANATOMY COURSES.

CAN I USE A SKELETAL SYSTEM BLANK DIAGRAM FOR A SCIENCE PROJECT?

YES, A SKELETAL SYSTEM BLANK DIAGRAM CAN BE USED FOR A SCIENCE PROJECT TO DEMONSTRATE KNOWLEDGE OF HUMAN ANATOMY, BONE STRUCTURE, AND FUNCTIONS OF THE SKELETAL SYSTEM.

Find other PDF article:

<https://soc.up.edu.ph/59-cover/Book?ID=ImS64-1316&title=the-heart-of-the-family-elizabeth-goudge.pdf>

[Skeletal System Blank Diagram](#)

Streamate - Web Cam Video Chat

You must enable javascript in your browser in order to use this site. You can click the link below for instructions. <https://www.enable-javascript.com/>

Powers 24-Hour Towing Service, Inc.

From light-duty to heavy-duty towing, roadside assistance, and junk car removal, Powers 24-Hr Towing has ...

Heavy Duty Towing & Roadside Assistance | DuPage County, ...

We're a trusted partner of local law enforcement and available 24/7, including holidays, to meet your ...

Powers 24-Hour Towing Service, Inc. | Hillside IL

Fueling up the rescue mission! When even the propane pros need a tow, Powers 24-Hour Towing is on the job ...

Chicago, IL - Powers 24-Hour Towing Service, Inc.

Get in touch with Powers 24-Hour Towing & Recovery for reliable towing services and roadside assistance in ...

Powers 24-Hour Towing Service, Inc. - Grand Chamber

We're a locally-trusted 24-hour tow company that's served drivers in Hillside, IL, and the surrounding ...

Explore our comprehensive guide featuring a skeletal system blank diagram. Perfect for students and educators! Learn more about anatomy today!

[Back to Home](#)