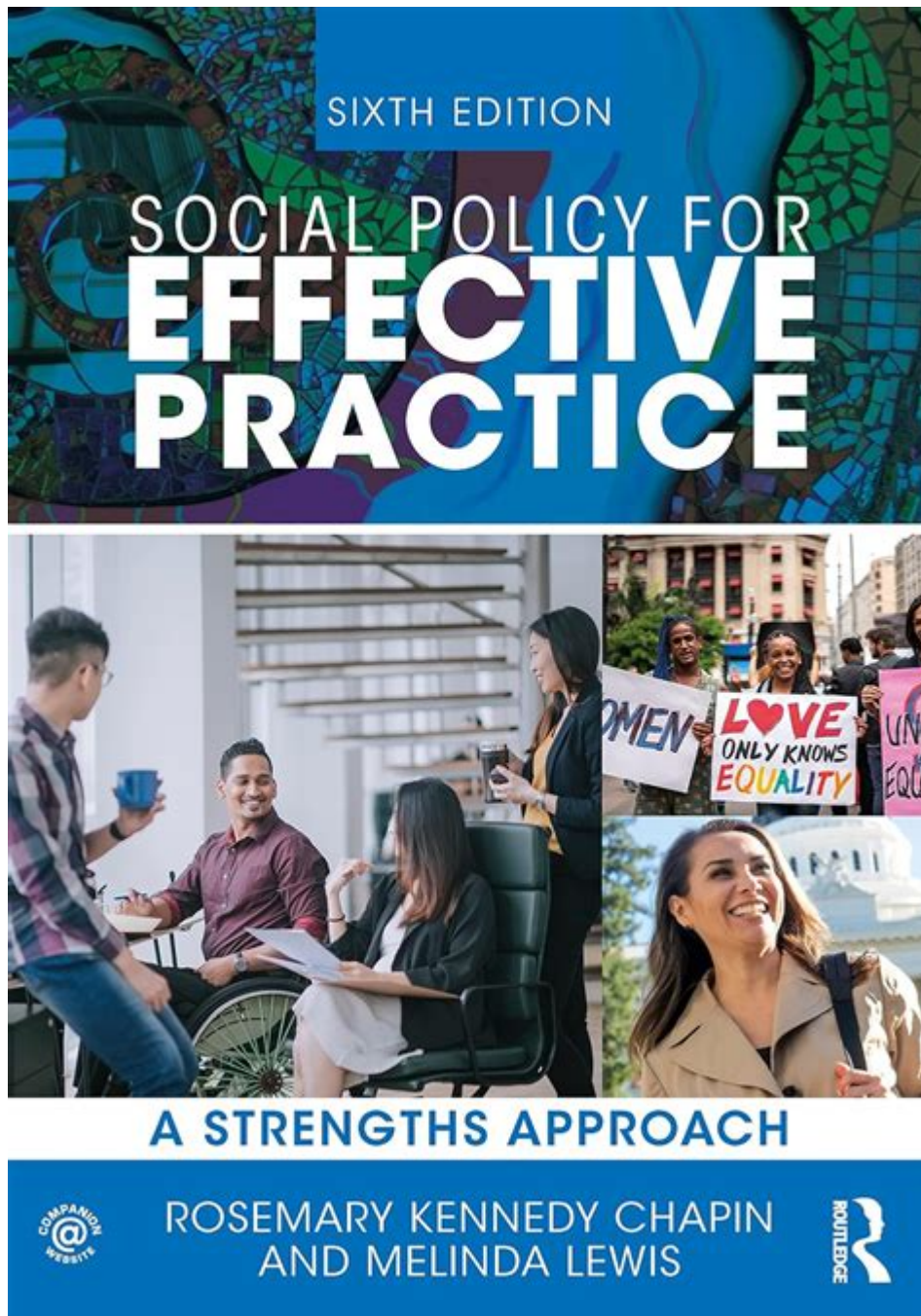


Social Policy For Effective Practice



Social policy for effective practice is a vital area of study and action that encompasses the strategies, guidelines, and frameworks that govern the provision of welfare and support services to individuals and communities. The effectiveness of these policies is crucial for addressing social issues, promoting equity, and enhancing the quality of life for all citizens. This article will explore the critical components of social policy, the importance of effective practice, and the frameworks and methodologies that can enhance the efficacy of social policy implementation.

Understanding Social Policy

Social policy can be defined as the body of principles and guidelines that shape how society addresses social issues such as poverty, education, healthcare, and housing. It encompasses various areas, including economic policy, social justice, and welfare provision.

Key Objectives of Social Policy

The primary objectives of social policy include:

1. Promoting Social Justice: Ensuring fairness and equity in the distribution of resources and opportunities.
2. Enhancing Quality of Life: Improving the overall well-being of individuals and communities.
3. Addressing Inequality: Tackling structural disparities that affect marginalized groups.
4. Supporting Vulnerable Populations: Providing assistance to those in need, such as the elderly, disabled, and low-income families.
5. Facilitating Social Cohesion: Promoting unity and a sense of belonging among diverse groups within society.

The Importance of Effective Practice in Social Policy

Effective practice in social policy is essential for achieving the aforementioned objectives. It involves the application of evidence-based strategies and interventions that can produce positive outcomes for individuals and communities.

Components of Effective Practice

Several components contribute to effective practice in social policy:

1. Research and Evidence-Based Approaches: Effective social policies are grounded in rigorous research and data analysis. Policymakers must rely on empirical evidence to identify the needs of communities and evaluate the impact of interventions.
2. Collaboration and Partnerships: Engaging with stakeholders, including government agencies, non-profit organizations, and community groups, is crucial for the successful implementation of social policies. Collaborative efforts can enhance resources, share knowledge, and foster a sense of shared

responsibility.

3. **Cultural Competency:** Understanding and respecting the diverse cultural backgrounds of individuals and communities is vital for effective practice. Policymakers and practitioners must be aware of cultural differences and tailor their approaches accordingly.

4. **Flexibility and Adaptability:** Social policies must be adaptable to changing circumstances and emerging needs. Effective practice requires ongoing assessment and the willingness to modify strategies based on feedback and outcomes.

5. **Sustainability:** Long-term success in social policy requires a focus on sustainability. This involves not only financial sustainability but also ensuring that social programs are designed to be resilient and continue to meet the needs of communities over time.

Frameworks for Effective Social Policy Implementation

To achieve effective practice in social policy, several frameworks can be utilized. These frameworks provide structured approaches to planning, executing, and evaluating social policies.

The Policy Cycle

The policy cycle is a commonly used framework that outlines the stages of policy development. It typically includes the following steps:

1. **Problem Identification:** Recognizing and defining the social issue that needs to be addressed.
2. **Policy Formulation:** Developing potential solutions and strategies to tackle the identified problem.
3. **Decision-Making:** Choosing the most effective policy option based on analysis and stakeholder input.
4. **Implementation:** Executing the policy through appropriate programs and services.
5. **Evaluation:** Assessing the effectiveness and impact of the policy, including modifications as necessary.

Participatory Approaches

Participatory approaches emphasize the involvement of stakeholders, including affected communities, in the policy-making process. Key elements of

participatory approaches include:

- Engagement: Actively involving community members in discussions and decision-making processes.
- Empowerment: Providing individuals and groups with the tools and resources to advocate for their needs and interests.
- Transparency: Ensuring that the policy-making process is open and accessible, fostering trust and accountability.

Social Impact Assessment

Social impact assessments (SIAs) are tools used to evaluate the potential effects of proposed policies on individuals and communities. This process includes:

- Identifying Stakeholders: Recognizing those who will be affected by the policy.
- Assessing Impacts: Evaluating both positive and negative effects of the policy on various groups.
- Recommending Mitigation Strategies: Providing suggestions for minimizing adverse impacts and enhancing positive outcomes.

Challenges in Implementing Social Policy

Despite the frameworks and strategies available, several challenges can hinder the effective practice of social policy.

Resource Constraints

Limited funding and resources can significantly impact the ability to implement social policies effectively. Policymakers must prioritize resource allocation and seek innovative funding solutions to support social programs.

Political and Bureaucratic Barriers

Political agendas and bureaucratic processes can slow down policy development and implementation. Navigating these barriers requires strong leadership and advocacy efforts to ensure that social issues remain a priority.

Resistance to Change

Resistance from stakeholders, including policymakers and community members, can impede the adoption of new policies or changes to existing ones. Building consensus and fostering open dialogue can help address these concerns.

Conclusion

In conclusion, social policy for effective practice is an essential aspect of creating equitable and just societies. By understanding the components of effective practice, utilizing appropriate frameworks, and addressing the challenges that arise, policymakers and practitioners can enhance the impact of social policies. Through collaboration, research, and community engagement, social policies can lead to meaningful changes that improve the lives of individuals and promote social cohesion. The ongoing commitment to effective practice will ensure that social policies evolve to meet the changing needs of society, ultimately contributing to a better future for all.

Frequently Asked Questions

What is social policy and why is it important for effective practice?

Social policy refers to the guidelines and principles that govern the welfare of individuals and communities. It is important for effective practice as it provides a framework for addressing social issues, ensuring equitable access to resources, and promoting social justice.

How can social policy influence public health outcomes?

Social policy can influence public health outcomes by shaping access to healthcare services, promoting healthy behaviors, and addressing social determinants of health such as education, income, and housing, ultimately leading to better health equity and improved community well-being.

What role do stakeholders play in the development of social policy?

Stakeholders, including government agencies, non-profits, community members, and advocacy groups, play a crucial role in the development of social policy by providing input, identifying needs, and collaborating on solutions that reflect the community's priorities and values.

What are some key challenges in implementing social policy effectively?

Key challenges include limited funding, political opposition, lack of coordination among agencies, resistance to change from communities, and the complexity of social issues that require multifaceted approaches.

How can data inform social policy decisions?

Data can inform social policy decisions by providing evidence on the needs of populations, evaluating the effectiveness of existing policies, identifying gaps in services, and guiding resource allocation to ensure interventions are targeted and effective.

What is the significance of community engagement in social policy?

Community engagement is significant in social policy as it ensures that policies are relevant to the needs of the population, fosters trust, empowers residents, and enhances the likelihood of successful implementation by incorporating local knowledge and perspectives.

How does intersectionality impact social policy formulation?

Intersectionality impacts social policy formulation by highlighting how various social identities (e.g., race, gender, class) intersect to create unique experiences and challenges, necessitating policies that address these complexities rather than adopting a one-size-fits-all approach.

What are evidence-based practices in social policy?

Evidence-based practices in social policy involve using the best available research and data to guide decision-making and implementation, ensuring that policies are grounded in proven strategies that enhance effectiveness and accountability.

How can technology enhance social policy implementation?

Technology can enhance social policy implementation by improving data collection and analysis, facilitating communication and collaboration among stakeholders, increasing accessibility of services through digital platforms, and enabling innovative solutions to social challenges.

Find other PDF article:

<https://soc.up.edu.ph/30-read/files?trackid=ips15-8848&title=how-to-draw-like-a-pro.pdf>

[Social Policy For Effective Practice](#)

SOCIAL | Restaurant + Lounge | Ottawa

SOCIAL is focused on progressive Canadian cuisine with a diverse & innovative wine selection and craft cocktail offerings. SOCIAL is one of Ottawa's most vibrant & creative restaurants with ...

MENUS | SOCIAL | Restaurant

Please note that we require a credit card for all bookings over 8+ guests. There is also a 20% gratuity added to all bookings in private rooms.

BRUNCHED+BEAUTIFUL | SOCIAL | Restaurant

WELCOME TO SOCIAL'S NEW MONTHLY DRAG SHOW, BROUGHT TO YOU BY OTTAWA'S VERY OWN UNITY PRODUCTIONS HOSTED BY FIFI HOO-KERS

HAPPENING | SOCIAL | Restaurant

SOCIAL HOUR UNWIND WITH US DAILY FROM 3PM-6PM (AND LATE NIGHT THURS-SAT) FOR GREAT DRINKS, SHAREABLE BITES, AND GOOD VIBES.

CONTACT | SOCIAL | Restaurant

CONTACT US OUR DEDICATED TEAM IS ALWAYS AVAILABLE TO ASSIST YOU WITH ANY QUESTIONS OR CONCERNS YOU MAY HAVE, AND WE STRIVE TO PROVIDE PROMPT ...

GROUP MENUS | SOCIAL | Restaurant

Please note that we require a credit card for all bookings over 8+ guests. There is also a 20% gratuity added to all bookings in private rooms.

VALENTINE'S DAY | SOCIAL | Restaurant

SOCIAL VALENTINE'S DAY MENU Set Menu \$125 / per person First Course select one of the following TWILD BOAR BELLY FRITTER PICKLED MUSTARD SEED | RASPBERRY ...

End of Summer Patio Social! | SOCIAL | Restaurant

Sep 29, 2024 · Join us at Social on September 29th for the End of Summer Patio Social! Enjoy live music by Jeff Rogers from 6-9 PM, sip your favorite drinks, and soak up the last bit of ...

PRIVATE EVENTS | SOCIAL | Restaurant

PRIVATE EVENTS AT SOCIAL, WE PRIDE OURSELVES IN EXCEEDING YOUR EVERY NEED AND EXPECTATION. EVERY FUNCTION, SMALL OR LARGE, FORMAL OR CASUAL, HAS ...

MOTHER'S DAY | SOCIAL | Restaurant

TREAT YOUR MOM, THIS MOTHER'S DAY MOTHER'S DAY BRUNCH : 11AM - 3PM BASKET OF BREAD | SM 4 / LG 7 HERB INFUSED OLIVE OIL + WHIPPED SALTED BUTTER ...

SOCIAL | Restaurant + Lounge | Ottawa

SOCIAL is focused on progressive Canadian cuisine with a diverse & innovative wine selection and craft cocktail offerings. SOCIAL is one of Ottawa's most vibrant & creative restaurants with ...

MENUS | SOCIAL | Restaurant

Please note that we require a credit card for all bookings over 8+ guests. There is also a 20% gratuity added to all bookings in private rooms.

BRUNCHED+BEAUTIFUL | SOCIAL | Restaurant

WELCOME TO SOCIAL'S NEW MONTHLY DRAG SHOW, BROUGHT TO YOU BY OTTAWA'S VERY OWN UNITY PRODUCTIONS HOSTED BY FIFI HOO-KERS

HAPPENING | SOCIAL | Restaurant

SOCIAL HOUR UNWIND WITH US DAILY FROM 3PM-6PM (AND LATE NIGHT THURS-SAT) FOR GREAT DRINKS, SHAREABLE BITES, AND GOOD VIBES.

CONTACT | SOCIAL | Restaurant

CONTACT US OUR DEDICATED TEAM IS ALWAYS AVAILABLE TO ASSIST YOU WITH ANY QUESTIONS OR CONCERNS YOU MAY HAVE, AND WE STRIVE TO PROVIDE PROMPT ...

GROUP MENUS | SOCIAL | Restaurant

Please note that we require a credit card for all bookings over 8+ guests. There is also a 20% gratuity added to all bookings in private rooms.

VALENTINE'S DAY | SOCIAL | Restaurant

SOCIAL VALENTINE'S DAY MENU Set Menu \$125 / per person First Course select one of the following TWILD BOAR BELLY FRITTER PICKLED MUSTARD SEED | RASPBERRY ...

End of Summer Patio Social! | SOCIAL | Restaurant

Sep 29, 2024 · Join us at Social on September 29th for the End of Summer Patio Social! Enjoy live music by Jeff Rogers from 6-9 PM, sip your favorite drinks, and soak up the last bit of ...

PRIVATE EVENTS | SOCIAL | Restaurant

PRIVATE EVENTS AT SOCIAL, WE PRIDE OURSELVES IN EXCEEDING YOUR EVERY NEED AND EXPECTATION. EVERY FUNCTION, SMALL OR LARGE, FORMAL OR CASUAL, HAS ...

MOTHER'S DAY | SOCIAL | Restaurant

TREAT YOUR MOM, THIS MOTHER'S DAY MOTHER'S DAY BRUNCH : 11AM - 3PM BASKET OF BREAD | SM 4 / LG 7 HERB INFUSED OLIVE OIL + WHIPPED SALTED BUTTER ...

Explore essential strategies in our guide on social policy for effective practice. Discover how to enhance your impact and drive positive change. Learn more!

[Back to Home](#)