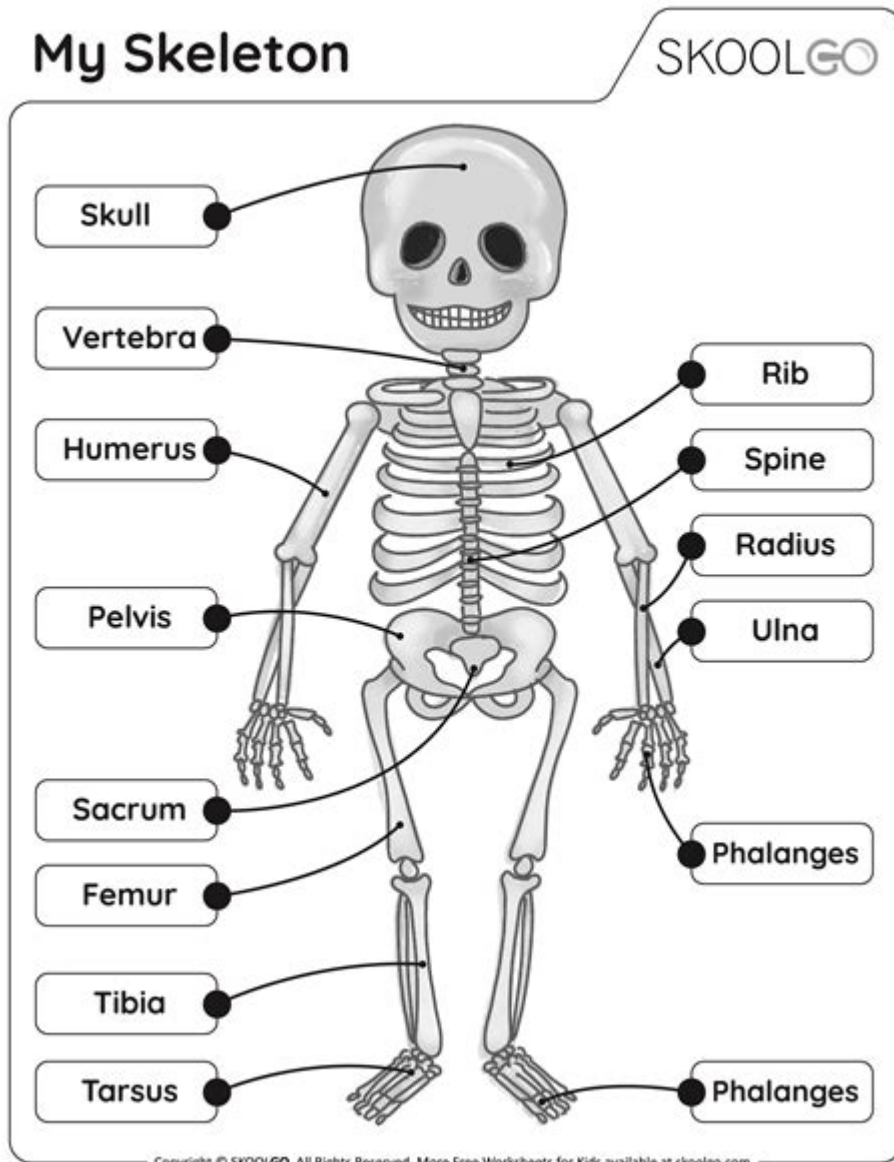


Skeleton Worksheet For Kindergarten



Skeleton worksheets for kindergarten serve as a fascinating and educational tool that introduces young learners to the basic concepts of human anatomy. Teaching children about the human skeleton can spark their curiosity about the body and promote a healthy understanding of how they function. In this article, we will explore the importance of skeleton worksheets, the various types available, and how to effectively incorporate them into educational activities for kindergarten students.

The Importance of Teaching About the Skeleton

in Kindergarten

Teaching young children about the human skeleton has numerous benefits. Here are some key reasons why this subject is important:

- **Foundation for Science Learning:** Introducing the skeleton sets the stage for more advanced studies in biology and health sciences in later grades.
- **Promotes Body Awareness:** Understanding the skeleton helps children learn about their own bodies, fostering a sense of body awareness and promoting health education.
- **Encourages Curiosity:** Children are naturally curious, and learning about the skeleton can lead to questions about how the body works, encouraging exploration and discovery.
- **Development of Fine Motor Skills:** Activities involving skeleton worksheets often require cutting, coloring, or pasting, which helps develop fine motor skills.

Types of Skeleton Worksheets for Kindergarten

Skeleton worksheets come in various formats, catering to different learning styles and educational needs. Here are some popular types:

1. Labeling Worksheets

Labeling worksheets provide illustrations of the human skeleton, asking students to identify and label different bones. This type of worksheet encourages children to:

- Recognize major bones such as the skull, spine, and ribcage.
- Understand the location and function of each bone.
- Develop vocabulary related to anatomy.

2. Coloring Pages

Coloring pages featuring skeletons allow children to engage creatively while learning. These pages often depict the skeleton in various activities, making the learning process fun and interactive. Benefits of coloring pages include:

- Encouraging creativity and self-expression.
- Helping children focus and improve concentration.
- Reinforcing knowledge through repetition as they color different parts of the skeleton.

3. Matching Activities

Matching activities typically involve pairing images of bones with their names or functions. This type of worksheet helps reinforce memory and recognition skills. Children can:

- Enhance cognitive skills by making associations.
- Learn through play, making the experience enjoyable.

4. Fun Facts Worksheets

Fun facts worksheets provide interesting trivia about the human skeleton, such as the number of bones in a human body or the fact that babies are born with more bones than adults. These worksheets can spark discussions and encourage further exploration.

How to Use Skeleton Worksheets in the Classroom

Incorporating skeleton worksheets into kindergarten classrooms can be done in various engaging ways. Here are some effective strategies:

1. Integrate with Thematic Units

Skeleton worksheets can be integrated into broader thematic units about the human body, health, or even Halloween. This approach allows for a multi-disciplinary learning experience, connecting science, art, and health education.

2. Hands-On Activities

Pairing worksheets with hands-on activities can enhance learning. For example:

1. **Build a Skeleton:** Use craft supplies like cotton swabs or pasta to create a 3D skeleton model.
2. **Movement Activities:** Have children mimic movements associated with different bones (e.g., bending like a spine).
3. **Storytime:** Read books about the human body and skeletons, then follow up with related worksheet activities.

3. Group Work

Encouraging collaboration among students can promote social skills. Consider activities where children work in pairs or small groups to complete worksheets. This can include:

- Discussing what they know about bones.
- Helping each other label or match bones.
- Sharing their colored skeleton pages with the class.

Benefits of Using Skeleton Worksheets

The use of skeleton worksheets can have lasting benefits for kindergarten students:

- **Enhanced Understanding:** Worksheets provide a visual and hands-on approach to learning about the skeleton, making the concepts easier to understand.

- **Engagement:** Interactive worksheets capture children's attention, making learning more enjoyable.
- **Assessment:** Teachers can use completed worksheets to assess students' understanding and identify areas that may require further instruction.
- **Reinforcement:** Repeated exposure to the material through various worksheet formats helps reinforce knowledge.

Conclusion

In conclusion, **skeleton worksheets for kindergarten** are invaluable tools for teaching young children about the human body. They not only provide a foundation for future scientific learning but also promote body awareness, curiosity, and creativity. By utilizing various types of worksheets and incorporating them into engaging classroom activities, educators can create a dynamic learning environment that fosters both knowledge and enjoyment. As children explore the fascinating world of the skeleton, they develop essential skills that will benefit them in their educational journey ahead.

Frequently Asked Questions

What is a skeleton worksheet for kindergarten?

A skeleton worksheet for kindergarten is an educational resource designed to help young children learn about the human skeleton, including its parts and functions, through engaging activities like coloring, labeling, and matching.

How can skeleton worksheets benefit kindergarten students?

Skeleton worksheets can enhance fine motor skills through coloring and drawing, improve knowledge of anatomy, and foster curiosity about the human body in an enjoyable and age-appropriate manner.

What types of activities are included in skeleton worksheets for kids?

Activities in skeleton worksheets may include identifying bones, coloring skeletons, connecting bones to their names, and simple puzzles or games related to the human skeleton.

Are there any online resources for skeleton worksheets for kindergarten?

Yes, many educational websites offer free printable skeleton worksheets for kindergarten, such as Teachers Pay Teachers, Education.com, and Twinkl.

How can teachers incorporate skeleton worksheets into their lessons?

Teachers can integrate skeleton worksheets into science lessons, art projects, or health education by using them as part of interactive activities, group discussions, or hands-on learning stations.

What key concepts should be included in a skeleton worksheet for kindergarten?

Key concepts should include the names and functions of major bones (like skull, ribs, and spine), the importance of the skeleton for protection and movement, and basic body awareness.

Can skeleton worksheets be adapted for children with special needs?

Absolutely! Skeleton worksheets can be tailored with larger print, simplified instructions, and visual aids to accommodate various learning styles and needs.

What materials are needed to use skeleton worksheets effectively?

Basic materials include crayons or colored pencils, scissors for cutting out parts, glue for assembling activities, and sometimes additional resources like books or videos about the human skeleton.

How can parents support their child's learning with skeleton worksheets at home?

Parents can engage with their child by going through the worksheets together, discussing the names and functions of bones, and encouraging creative activities related to the skeleton, such as building a model or drawing.

Find other PDF article:

<https://soc.up.edu.ph/62-type/files?docid=aaU90-5958&title=this-is-lean-niklas-modig.pdf>

[Skeleton Worksheet For Kindergarten](#)

How can I convert a static mesh into a skeletal mesh

Jun 25, 2017 · You can convert a static mesh into a skeletal mesh within the editor by exporting your static mesh as an fbx, then reimporting the fbx as a skeletal mesh and create new skeleton.

What skeleton does metahuman use? - Character & Animation

Jan 4, 2023 · Hello, I haven't seen a straight-forward answer to this. Which skeleton, precisely, does MetaHuman use? I thought it used Manny/Quinn, but upon investigating the control rig, ...

Blender UE5 Rig V1.1.1 - FREE Download + TUTORIAL

Sep 5, 2024 · I would like to share with you the Rig I made to create animations for Manny Skeleton in Blender 4, hope it's helpful and you enjoy it, any suggestions are welcome.

Is there a way to permanently delete bones from a skeleton ...

Dec 1, 2024 · As the title says. Is there any way to permanently get rid of these bones? My problem is that any editing to the skeleton: renaming bones, deleting bones etc will save the ...

Skeletal Mesh VS Skeleton - Epic Developer Community Forums

Mar 5, 2022 · hehe, You kind of explained it yourself. A skeleton is applied to a skeletal mesh for animation. So simply put, a static mesh does not have a skeleton and a skeletal mesh does.

[Skeleton for Diablo III 2019.1.5 _ _ _ _ _](#)

May 15, 2015 · 4 4 4 3 3 3 ...

[Tutorial: Skeletal Editor Usage Guide - Epic Developer Community ...](#)

Aug 25, 2023 · Thanks for the tutorial, I tried to add bone with blueprint, I managed to do it, but unfortunately you can't see the bones in the final skeletal mesh even calling "Commit skeleton ...

How can I attach a static mesh to a bone with animation?

Aug 8, 2014 · Hello All Gladly, after a whole day of pain, I managed to set up all of my animations that are blended together. However, I am aiming to attach a torch onto the skeletons right ...

(Solved) Morph targets not showing in curve containers for control ...

Dec 27, 2024 · Been working with morph targets in UE for a while, but since the unreal 5.5 update with the import changes I have been unable to use the Curve containers for the control rig. ...

Imported skeletal mesh rotated 90 degrees upon placement in game

Sep 10, 2015 · The reason I'm saying this is because I've found if I alter the import rotation in any way, the skeletal mesh simply refuses to work with the default animations, and my character ...

[How can I convert a static mesh into a skeletal mesh](#)

Jun 25, 2017 · You can convert a static mesh into a skeletal mesh within the editor by exporting your static mesh as an fbx, then reimporting the fbx as a skeletal mesh and create new skeleton.

What skeleton does metahuman use? - Character & Animation

Jan 4, 2023 · Hello, I haven't seen a straight-forward answer to this. Which skeleton, precisely, does MetaHuman use? I thought it used Manny/Quinn, but upon investigating the control rig, ...

