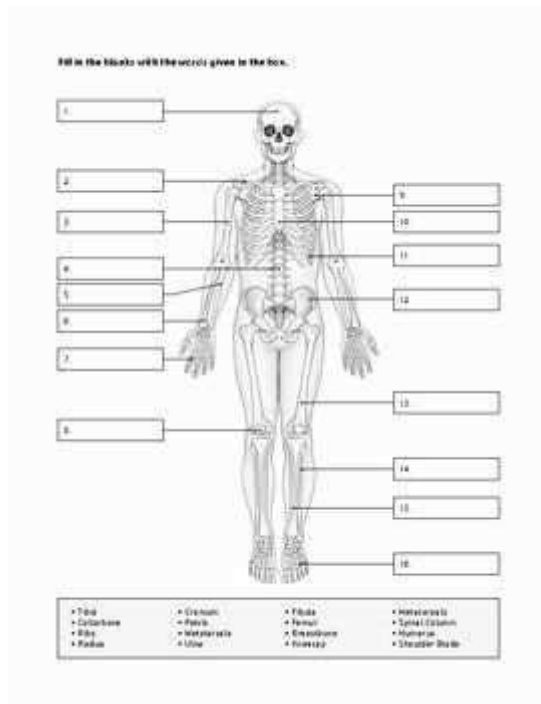


Skeletal System Study Guide Answers

Anatomy



Skeletal system study guide answers anatomy provides an essential overview of the skeletal system, which serves as the framework of the human body. Understanding the skeletal system is crucial for students and professionals in fields such as medicine, biology, and sports science. This article aims to provide a comprehensive study guide on the anatomy of the skeletal system, covering its components, functions, and common questions that arise during the study of this vital system.

Overview of the Skeletal System

The skeletal system is composed of bones, cartilage, ligaments, and joints. It provides structure to the body, facilitates movement, and protects vital organs. The adult human skeleton typically consists of 206 bones, though this number can vary due to variations such as extra ribs or small sesamoid bones.

Components of the Skeletal System

1. **Bones:** The primary component of the skeletal system, bones are classified into two main categories:
 - **Axial Skeleton:** Comprises 80 bones including the skull, vertebral column, and rib cage.
 - **Appendicular Skeleton:** Includes 126 bones of the limbs and girdles.

2. **Cartilage:** A flexible connective tissue found in various parts of the body, including joints, ear, nose, and rib cage. It serves as a cushion between bones and supports soft tissues.

3. **Ligaments:** Tough bands of connective tissue that connect bones to other bones at joints, providing stability.

4. **Joints:** The areas where two or more bones meet, allowing for movement. Joints can be classified into three main types:

- **Fibrous Joints:** Immovable joints connected by dense connective tissue.
- **Cartilaginous Joints:** Slightly movable joints connected by cartilage.
- **Synovial Joints:** Freely movable joints characterized by a fluid-filled cavity.

Functions of the Skeletal System

The skeletal system serves several essential functions, including:

1. **Support:** It provides a rigid framework that supports the body's shape and form.
2. **Protection:** Bones encase and protect vital organs, such as the brain (skull), heart and lungs (rib cage), and spinal cord (vertebrae).
3. **Movement:** The skeletal system works in conjunction with the muscular system to facilitate movement. Muscles attach to bones via tendons, and when muscles contract, they pull on bones to create movement.
4. **Mineral Storage:** Bones serve as a reservoir for minerals, particularly calcium and phosphorus, which are vital for various bodily functions.
5. **Blood Cell Production:** The bone marrow, found within certain bones, is responsible for producing blood cells, including red blood cells, white blood cells, and platelets.
6. **Energy Storage:** The skeletal system stores lipids in the yellow bone marrow, which can be utilized as an energy source.

Bone Structure and Composition

Understanding the structure and composition of bones is vital for the study of the skeletal system.

Bone Types

1. **Long Bones:** Longer than they are wide, these bones are primarily found in the limbs (e.g., femur, humerus).

2. **Short Bones:** Approximately equal in length and width, these bones provide stability and support (e.g., carpals, tarsals).
3. **Flat Bones:** Thin and flat, these bones protect internal organs (e.g., skull, sternum).
4. **Irregular Bones:** Bones that do not fit into the other categories (e.g., vertebrae, facial bones).

Bone Structure

- **Diaphysis:** The long shaft of a long bone, composed mainly of compact bone.
- **Epiphysis:** The ends of a long bone, consisting of spongy bone covered by a thin layer of compact bone.
- **Metaphysis:** The region between the diaphysis and epiphysis, where growth occurs in children.
- **Articular Cartilage:** A smooth layer of cartilage that covers the epiphysis, reducing friction at joints.
- **Periosteum:** A dense layer of vascular connective tissue enveloping the bones except at the surfaces of the joints.
- **Bone Marrow:** The soft tissue within bones where blood cells are produced.

Common Questions and Answers

As students prepare for examinations on the skeletal system, several common questions may arise. Here are some frequently asked questions along with their answers.

What are the main functions of the skeletal system?

The main functions of the skeletal system include support, protection, movement, mineral storage, blood cell production, and energy storage.

How many bones are in the adult human skeleton?

An adult human skeleton typically consists of 206 bones, although this number can vary due to anatomical variations.

What types of joints are present in the human body?

The three main types of joints are fibrous joints (immovable), cartilaginous joints (slightly movable), and synovial joints (freely movable).

What is the difference between compact and spongy bone?

- Compact Bone: Dense and forms the outer layer of bones; provides strength and support.
- Spongy Bone: Less dense, found primarily at the ends of long bones and in the interiors of other bones; houses red bone marrow.

What role does the bone marrow play in the body?

Bone marrow is responsible for producing blood cells (red blood cells, white blood cells, and platelets) and serves as a storage site for fat.

Conclusion

The skeletal system is a complex and vital component of the human body, providing support, protection, and facilitating movement. Understanding the anatomy, functions, and components of the skeletal system is essential for students and professionals in various fields. By studying the skeletal system comprehensively, individuals can appreciate its significance in maintaining the overall health and functionality of the human body. This study guide serves as a foundational resource for anyone looking to deepen their understanding of skeletal anatomy and prepare effectively for examinations or practical applications in related fields.

Frequently Asked Questions

What are the main functions of the skeletal system?

The main functions of the skeletal system include providing structure and support to the body, protecting internal organs, enabling movement by serving as attachment points for muscles, storing minerals such as calcium and phosphorus, and producing blood cells in the bone marrow.

How many bones are in the adult human skeleton?

An adult human skeleton typically consists of 206 bones, although this number can vary slightly due to variations such as extra or fused bones.

What are the different types of bones in the human body?

The different types of bones in the human body include long bones (e.g., femur), short bones (e.g., carpals), flat bones (e.g., skull), irregular bones (e.g., vertebrae), and sesamoid bones (e.g., patella).

What is the role of the axial skeleton?

The axial skeleton consists of the skull, vertebral column, and rib cage, and its primary role is to support the central axis of the body, protect the brain and spinal cord, and house the organs of the thorax.

What is the process of bone remodeling?

Bone remodeling is a continuous process where old bone tissue is replaced by new bone tissue through the actions of osteoblasts (bone-building cells) and osteoclasts (bone-resorbing cells), allowing for the maintenance of bone strength and mineral homeostasis.

Find other PDF article:

<https://soc.up.edu.ph/51-grid/pdf?ID=AhD31-6258&title=rise-higher-hooda-math.pdf>

[Skeletal System Study Guide Answers Anatomy](#)

Create and run an app on Wear OS - Android Developers

Jul 7, 2025 · This page provides a guide for you to build your first app for Wear OS, using a template from Android Studio. ...

Android Wear OS App Development Guide 2025: Ho...

Jun 7, 2025 · So, if you're wondering how to make an Android Wear app? —or whether now's the time to build a Wear ...

Building Android Apps for Wear OS: A Developer's Guide

May 20, 2025 · Learn to build Android apps for Wear OS with tips, tools, and best practices for a smooth ...

Developing Wear OS Apps with Android Studio for Android We...

Jan 24, 2025 · In this tutorial, we will guide you through the process of developing Wear OS apps using Android Studio. ...

Wear OS | Multidevice | Android Developers

Learn to build for multiple surfaces for your wear OS app. Find out how to assess the quality of your app and fulfill the ...

Pierce County, Washington coronavirus cases and deaths

How is Pierce County faring against COVID-19, both overall and at a state level? Get the answers here, with data on cases and infection rates. This pages tracks the history of coronavirus ...

Pierce County, WA population by year, race, & more | USAFacts

Nov 8, 2022 · The ages, races, and population density of Pierce County, Washington tell a story. Understand the shifts in demographic trends with these charts visualizing decades of ...

What is the income of a household in Pierce County, WA

About \$96,600 in median income in 2019–2023. Household income is the total money received in a year — wages, pensions, investments, public assistance, and more — by everyone in a ...

Washington coronavirus cases and deaths | USAFacts

How is Washington faring against COVID-19, both overall and at a state level? Get the answers here, with data on hotspots and infection rates. This map tracks the history of coronavirus ...

Nebraska coronavirus cases and deaths | USAFacts

How is Nebraska faring against COVID-19, both overall and at a state level? Get the answers here, with data on hotspots and infection rates. This map tracks the history of coronavirus ...

What is the income of a household in Dane County,WI? - USAFacts

Feb 19, 2025 · About \$88,100 in median income in 2019–2023. Household income is the total money received in a year — wages, pensions, investments, public assistance, and more — by ...

How many drug overdose deaths happen every year in

Jul 19, 2024 · 3,477 overdose deaths in 2023. That means that for every 100,000 people living in Washington state, 45 died of drug overdose. This was the highest the drug overdose death ...

Which states contribute the most and least to federal revenue?

Apr 22, 2025 · Which states receive the most and least from the federal government? The most populous states generate a big chunk of federal revenue and get the most back. Thirty-one ...

USAFacts

37149,Polk County,NC,20724 37151,Randolph County,NC,143667 37153,Richmond County,NC,44829 37155,Robeson County,NC,130625 37157,Rockingham County,NC,91010 ...

How much fentanyl is seized at US borders each month? - USAFacts

About 740 pounds in June 2025. Fentanyl is a synthetic opioid used medically as a pain reliever but is also trafficked illegally due to its potency. In 2023, the latest data available, fentanyl and ...

Unlock your understanding of the skeletal system with our comprehensive study guide. Find anatomy answers and insights. Learn more to ace your exam!

[Back to Home](#)