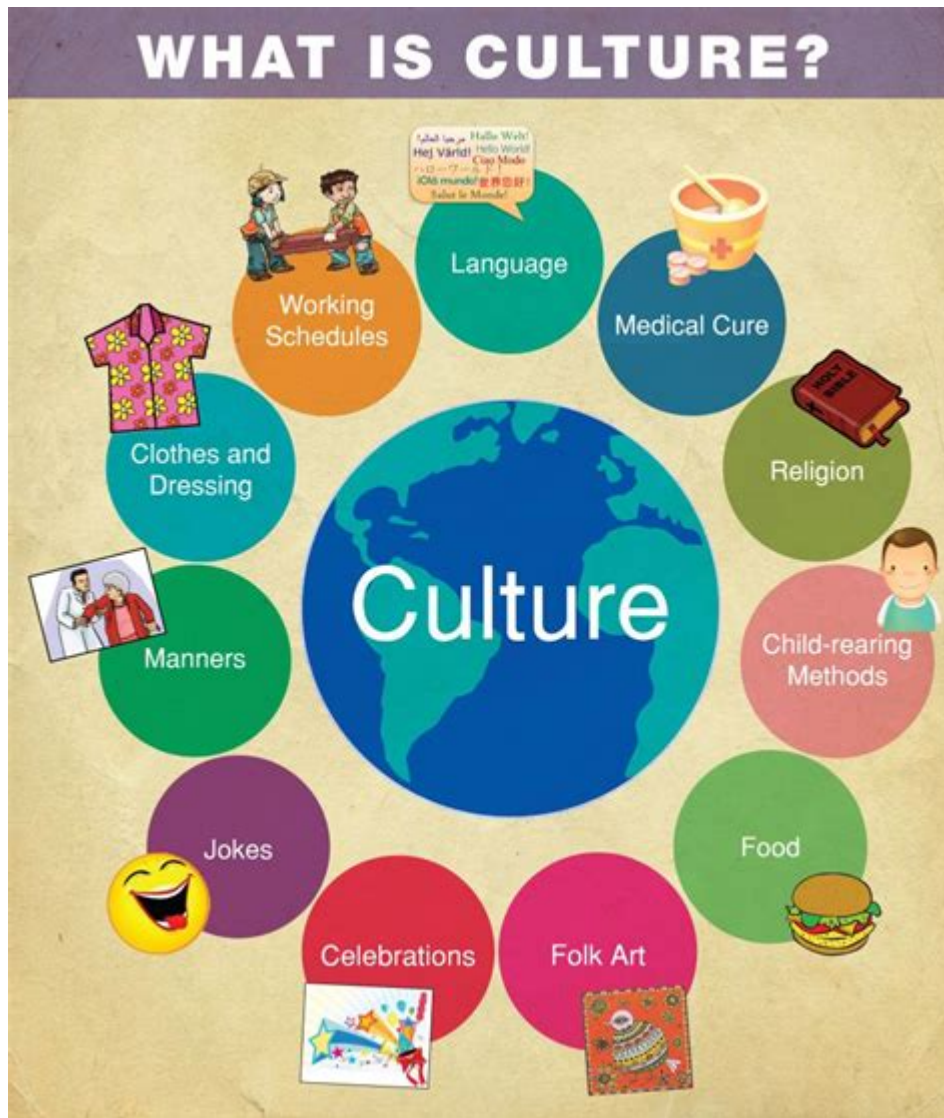


Society And Culture Studies



Society and culture studies encompass a broad range of interdisciplinary fields that examine the intricate relationships between individuals and their cultural contexts. This study area focuses on understanding how societies function, how cultural norms shape individual behavior, and how various elements of culture—such as language, religion, and art—interact with social structures. By analyzing these dynamics, scholars can better understand the challenges and transformations faced by societies in an increasingly globalized world.

Understanding Society and Culture

The Concept of Society

A society is a complex web of relationships formed by individuals who share a common culture, established institutions, and social norms. Societies can vary significantly based on factors such as

geography, history, and economic conditions. Major components of society include:

1. **Social Institutions:** Education, family, religion, economy, and government, which serve specific functions to maintain social order.
2. **Social Groups:** Various forms of associations, such as families, peer groups, communities, and organizations that provide support and identity.
3. **Social Norms:** The unwritten rules and expectations that govern behavior within a society, helping to maintain order and predictability.

The Role of Culture

Culture encompasses the beliefs, practices, arts, laws, customs, and habits of a particular group of people. It is the lens through which individuals interpret their experiences and the world around them. Key elements of culture include:

- **Language:** The primary means of communication that shapes thought and social interaction.
- **Beliefs and Values:** Underlying principles that guide behavior and decision-making.
- **Art and Aesthetics:** Expressions of creativity that reflect cultural narratives and values.
- **Rituals and Traditions:** Established practices that reinforce social bonds and cultural identity.

The interplay between society and culture is dynamic, as cultural practices can influence social structures and vice versa. For instance, shifts in cultural attitudes towards gender roles can lead to changes in family dynamics and workplace policies.

Interdisciplinary Approaches in Society and Culture Studies

Society and culture studies draw upon various disciplines, including sociology, anthropology, psychology, political science, and cultural studies. Each discipline offers unique perspectives and methodologies for examining societal and cultural phenomena.

Sociology

Sociology focuses on the study of social behavior, institutions, and structures. Sociologists analyze patterns of social relationships and their impact on individuals and society as a whole. Key topics include:

- **Social Stratification:** The hierarchical organization of society based on factors such as class, race, and gender.
- **Deviance and Social Control:** Understanding behaviors that deviate from societal norms and how societies regulate those behaviors.
- **Social Change:** Investigating the causes and consequences of shifts in social structures and cultural practices.

Anthropology

Anthropology offers insights into cultural diversity and human behavior through a comparative lens. Cultural anthropologists study various societies and their practices, focusing on:

- Ethnography: In-depth fieldwork that explores the daily lives and rituals of specific cultures.
- Cultural Relativism: The principle of understanding and evaluating cultural practices within their own context.
- Kinship and Social Organization: Examining family structures, lineage, and social networks across cultures.

Psychology

Psychological approaches to society and culture studies focus on individual behavior and cognitive processes. Topics of interest include:

- Cultural Psychology: Investigating how culture influences mental processes and emotional responses.
- Identity Formation: Understanding how personal and group identities are shaped by cultural contexts.
- Interpersonal Relationships: Analyzing how cultural norms affect social interactions and relationships.

Political Science

Political science examines the intersection of society, culture, and power dynamics. Areas of focus include:

- Political Culture: The set of attitudes, beliefs, and sentiments that shape political behavior and institutions.
- Social Movements: Analyzing collective actions aimed at promoting or resisting social change.
- Globalization: Understanding the effects of global interconnectedness on local cultures and societies.

Cultural Studies

Cultural studies investigate the ways in which culture shapes and is shaped by social dynamics. Topics include:

- Media and Communication: Exploring how media representations influence cultural perceptions and social norms.
- Popular Culture: Examining trends, ideas, and practices that emerge from the masses and their significance within society.
- Postmodernism: Analyzing the impact of contemporary cultural shifts and the questioning of

established norms and narratives.

Current Issues in Society and Culture Studies

As societies evolve, new challenges arise that demand careful examination through the lens of society and culture studies. Some pressing issues include:

Globalization

Globalization has led to increased interconnectedness among societies, resulting in both opportunities and challenges. Cultural exchange can enrich societies, but it can also lead to cultural homogenization and the erosion of local traditions. Scholars study:

- The impact of global capitalism on local economies and cultures.
- The rise of transnational identities and movements.
- The tension between cultural preservation and adaptation.

Inequality and Social Justice

Social inequality remains a critical concern, with disparities in wealth, opportunity, and representation affecting marginalized groups. Society and culture studies examine:

- The role of race, gender, and class in shaping individual experiences and access to resources.
- The effectiveness of social movements aimed at promoting equity and justice.
- Strategies for addressing systemic inequalities through policy and education.

Technology and Society

The rapid advancement of technology has transformed communication, work, and social interactions. Researchers explore:

- The effects of social media on cultural norms and personal relationships.
- The implications of artificial intelligence and automation on employment and social structures.
- Ethical considerations surrounding technology's influence on privacy, identity, and community.

Conclusion

Society and culture studies provide invaluable insights into the complexities of human behavior and social structures. By examining the intricate relationships between culture, society, and individual experiences, scholars can contribute to a deeper understanding of contemporary issues and foster informed dialogue about the future of our interconnected world. As society continues to evolve, the

importance of these studies will only grow, highlighting the need for continuous exploration and critical analysis of the cultural forces that shape our lives.

Frequently Asked Questions

What is the primary focus of society and culture studies?

Society and culture studies primarily focus on understanding the complex interactions between individuals, communities, and cultural norms, exploring how these elements shape identities, behaviors, and societal structures.

How do globalization and technology impact culture?

Globalization and technology facilitate the exchange of cultural ideas and practices across borders, leading to hybrid cultures, the spread of digital identities, and challenges in preserving local traditions.

What role does identity play in society and culture studies?

Identity is a central theme in society and culture studies, as it encompasses various aspects such as ethnicity, gender, class, and nationality, influencing how individuals perceive themselves and are perceived by others.

In what ways do social movements influence cultural change?

Social movements can drive cultural change by raising awareness about social issues, challenging existing norms, and advocating for new values and practices, ultimately reshaping public discourse and collective behavior.

What methods are commonly used in society and culture studies research?

Common methods include qualitative approaches such as ethnography, interviews, and discourse analysis, as well as quantitative methods like surveys and data analysis to understand societal trends and cultural phenomena.

How does intersectionality contribute to understanding social issues?

Intersectionality highlights how various social categories, such as race, gender, and class, intersect to create unique experiences of oppression and privilege, allowing for a more nuanced understanding of social issues.

What is the significance of cultural representation in media?

Cultural representation in media is significant as it shapes public perceptions, influences identity formation, and can either reinforce stereotypes or promote diversity and inclusion in society.

How do rituals and traditions affect social cohesion?

Rituals and traditions foster social cohesion by creating shared experiences and collective identities among members of a community, promoting belonging and solidarity through common practices.

What challenges do researchers face in society and culture studies?

Researchers often face challenges such as ethical considerations in studying vulnerable populations, the complexities of cultural relativism, and the difficulty in measuring intangible cultural phenomena.

What is the impact of digital culture on human interaction?

Digital culture has transformed human interaction by enabling instant communication and global connectivity, but it also raises concerns about the quality of relationships, the prevalence of online identities, and issues of privacy.

Find other PDF article:

<https://soc.up.edu.ph/13-note/files?trackid=Qfd87-9182&title=christian-writers-market-guide.pdf>

Society And Culture Studies

Society | Stats NZ

Jun 5, 2025 · Society Statistics about society are about people and the communities we live in. Find information about groups of people – for example ethnic groups, families and households, ...

Ethnicity, culture, and identity: 2023 Census | Stats NZ

Ethnicity, culture, and identity statistics tell us about New Zealand's increasingly diverse population and provide valuable insights into different groups in our society. Find topic tables ...

New Zealand index of socioeconomic deprivation: 2023 Census

New Zealand index of socioeconomic deprivation: 2023 Census provides 18 new Aotearoa Data Explorer tables on the 2023 New Zealand index of socioeconomic deprivation (NZDep2023). ...

Home | Stats NZ

Stats NZ is New Zealand's official data agency. We collect information from people and organisations through censuses and surveys, and use it to provide insights and data about ...

Modernising the census | Stats NZ

Today, within a modern evolving society, changing needs, changing technology, and changing expectations, there are more opportunities and reasons for us to mix the two sources of data ...

New Zealanders' trust in key institutions declines | Stats NZ

Data from the 2023 General Social Survey (GSS) found that trust held by New Zealanders in

institutions like the health system, education system, parliament, media, police, and courts has ...

[CSV files for download | Stats NZ](#)

Society Analysis of public place assaults, sexual assaults, and robberies in 2015 - CSV Comma Separated Values, 229 KB

New report signals nine top environmental issues facing New

Apr 18, 2019 · A new report shows the way we live and how we make a living are having a serious impact on our environment. Jointly produced by the Ministry for the Environment and ...

[New Zealand cohort life tables: March 2025 update | Stats NZ](#)

Life expectancy from the latest cohort life tables show that newborn boys born in the early 2020s could expect to live to around 88 years on average, and girls to around 91 years.

2023 Census population counts (by ethnic group, age, and Māori ...

New Zealand's population has grown by almost 300,000 people since the 2018 Census.

Society | Stats NZ

Jun 5, 2025 · Society Statistics about society are about people and the communities we live in. Find ...

Ethnicity, culture, and identity: 2023 Census | Stats NZ

Ethnicity, culture, and identity statistics tell us about New Zealand's increasingly diverse population and provide ...

New Zealand index of socioeconomic deprivation: 2...

New Zealand index of socioeconomic deprivation: 2023 Census provides 18 new Aotearoa Data Explorer tables ...

Home | Stats NZ

Stats NZ is New Zealand's official data agency. We collect information from people and organisations through ...

Modernising the census | Stats NZ

Today, within a modern evolving society, changing needs, changing technology, and changing ...

Explore the fascinating world of society and culture studies. Uncover insights into social dynamics and cultural trends. Learn more to deepen your understanding!

[Back to Home](#)