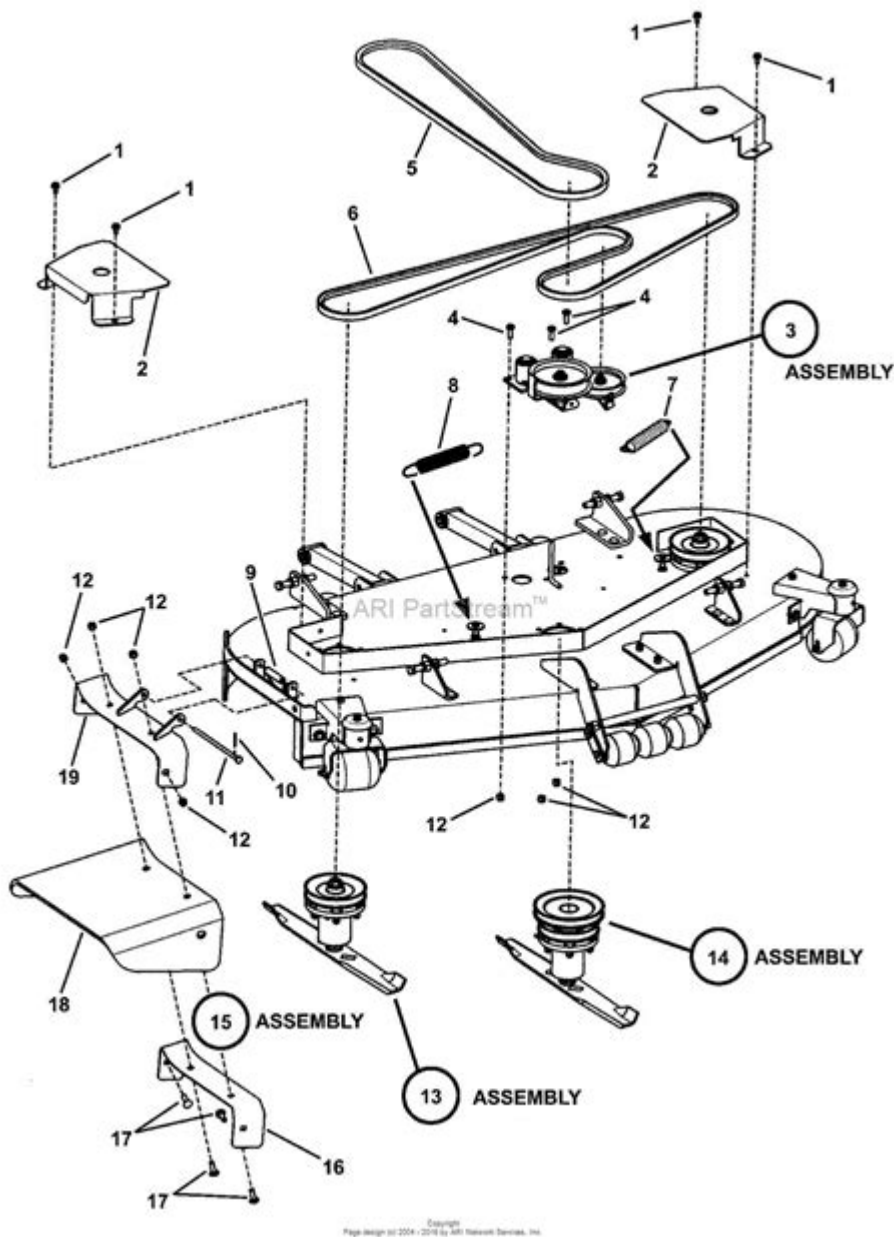


Snapper Clutch Assembly Diagram



Snapper clutch assembly diagram is an essential aspect of understanding how your Snapper lawn mower operates efficiently. The clutch assembly plays a crucial role in engaging and disengaging the mower blades, and having a clear diagram can significantly aid in maintenance, repairs, and overall comprehension of your lawn mower's mechanics. This article explores the components of the snapper clutch assembly, how to interpret the diagram, and tips for maintaining your lawn mower.

Understanding the Snapper Clutch Assembly

The clutch assembly in a Snapper lawn mower is primarily responsible for controlling the drive to the mower blades. When engaged, the clutch allows

the blades to spin and cut grass effectively, while disengaging stops the blades from spinning. Understanding this mechanism is vital for anyone who owns a Snapper mower, as it can help in troubleshooting issues and performing regular maintenance.

Key Components of the Snapper Clutch Assembly

To comprehend the snapper clutch assembly diagram fully, it's important to familiarize yourself with the various components involved. Here's a breakdown of the key parts:

1. Clutch Lever - This is the handle you pull to engage the blades. It connects to the clutch assembly and allows for manual control.
2. Clutch Cable - This cable connects the clutch lever to the clutch mechanism. It transmits the motion of the lever to engage or disengage the clutch.
3. Clutch Assembly - The core component that includes the electromagnetic clutch and various gears that facilitate the engagement of the blades.
4. Drive Belt - This belt transfers power from the engine to the clutch assembly, enabling the blades to spin.
5. Pulleys - These are used to redirect the drive belt and adjust the tension, ensuring smooth operation.
6. Spring - Springs are used within the assembly to help engage and disengage the clutch smoothly, preventing wear and tear.

Interpreting the Snapper Clutch Assembly Diagram

A snapper clutch assembly diagram is a visual representation of how all these components work together. Understanding the diagram can help with troubleshooting and repairs. Here's how to interpret the different elements:

Breaking Down the Diagram

1. Labels - Each component is typically labeled with its name or part number. Familiarize yourself with these labels to understand the diagram better.
2. Connections - Look for lines connecting different components, indicating how they interact with one another. This can help you trace any issues.
3. Orientation - Pay attention to the orientation of the components. Proper alignment is crucial for the mower's functionality.
4. Movement Arrows - Some diagrams include arrows showing the direction of movement for various parts. This is particularly important for understanding how the clutch engages and disengages.

Common Issues Related to the Clutch Assembly

Understanding potential issues that can arise with the clutch assembly is crucial for maintaining your Snapper mower. Here are some common problems:

- Clutch Not Engaging - If the blades do not engage when you pull the lever,

check the clutch cable for frays or breaks.

- Slipping Clutch - If the clutch engages but slips, it could be due to a worn-out drive belt or a misaligned pulley.
- Excessive Noise - Unusual noises during operation may indicate that the clutch assembly needs lubrication or that components are worn out.
- Blade Stopping Abruptly - This can be a sign of a faulty spring or an issue with the electromagnetic clutch.

Maintenance Tips for the Snapper Clutch Assembly

Regular maintenance can extend the life of your mower's clutch assembly and ensure optimal performance. Here are some essential maintenance tips:

1. Regular Inspection

- Check the Clutch Cable: Regularly inspect the clutch cable for frays or wear. Replace it if necessary to ensure proper engagement.
- Inspect the Drive Belt: Look for signs of wear, such as cracking or fraying. A worn belt can slip and cause the blades to stop unexpectedly.

2. Lubrication

- Lubricate Moving Parts: Apply lubricant to moving parts of the clutch assembly as recommended in your user manual. This helps in reducing friction and wear.
- Check for Rust: Ensure that all metal parts are free from rust. Use a rust inhibitor if necessary.

3. Cleaning

- Keep the Assembly Clean: Grass clippings and debris can accumulate around the clutch assembly. Regularly clean the area to prevent buildup that can hinder functionality.
- Remove Old Lubricant: If you notice old, hardened grease, clean it off and apply fresh lubricant.

4. Professional Servicing

- Consult a Professional: If you're unsure about performing maintenance yourself or encounter a more complex issue, consult a professional. They can provide thorough inspections and repairs.

Conclusion

A clear understanding of the **snapper clutch assembly diagram** is vital for any Snapper lawn mower owner. This knowledge empowers you to conduct maintenance, identify issues, and ensure your mower operates efficiently. By familiarizing yourself with the components, interpreting the diagram, and following maintenance tips, you can prolong the life of your mower and enjoy a well-manicured lawn all season long. Always remember to refer to your mower's specific manual for detailed instructions and part numbers when conducting repairs or maintenance.

Frequently Asked Questions

What is a snapper clutch assembly diagram used for?

A snapper clutch assembly diagram is used to illustrate the components and layout of the clutch system in Snapper lawn mowers, helping users understand how the parts connect and function together.

Where can I find a snapper clutch assembly diagram?

You can find a snapper clutch assembly diagram in the owner's manual of your Snapper mower, on the manufacturer's website, or through online forums and repair guide websites dedicated to lawn equipment.

How can I troubleshoot issues using a snapper clutch assembly diagram?

To troubleshoot issues, compare the diagram with your mower's assembly to identify misalignments or worn parts. This can help pinpoint problems like slipping clutches or difficulty engaging the mower blades.

Are there different types of snapper clutch assembly diagrams?

Yes, there are different types of snapper clutch assembly diagrams tailored to various mower models and configurations, including diagrams for belt-driven and gear-driven systems.

Can I repair my snapper clutch assembly using the diagram?

Yes, you can use the snapper clutch assembly diagram to guide you through the repair process, as it provides a visual reference for disassembling and reassembling the clutch components correctly.

Find other PDF article:

<https://soc.up.edu.ph/20-pitch/pdf?dataid=eIW52-6202&title=equivalent-fractions-and-simplest-form-worksheet.pdf>

Snapper Clutch Assembly Diagram

Snapper | Legendary

Snapper.® A legendary brand that started it all. We created a category when we invented the industry's first self-propelled rotary lawn mower in 1951 and we didn't stop there.

Snapper | Saltwater, Reef, Edible | Britannica

snapper, any of about 105 species of fishes of the family Lutjanidae (order Perciformes). Snappers are found, often in abundance, throughout the tropics.

TOP 10 BEST Fresh Snapper in Toronto, ON - Updated 2025 - Yelp

Top 10 Best Fresh Snapper in Toronto, ON - July 2025 - Yelp - Coral Sea Fish Market, Osler Fish Market, Yuzuki Fish Market, Taro's Fish, Honest Weight, Miss Likklemore's, New Orleans ...

Snapper Fish Guide: Habitat, Diet, Life Cycle, and Facts

Jul 8, 2023 · Discover everything about Snapper fish, including various species, their habitats, diet, and expert tips on how to catch them. Learn about the unique features of these popular ...

Discovering Snapper: The Fish of Many Colors - MeatChefTools

Nov 5, 2024 · Snapper encompasses a diverse range of species, but some of the most commonly found types include Red Snapper, Yellowtail Snapper, and Lane Snapper. Red Snapper is ...

13 Different Types of Snapper Fish Ranked by Size - AZ Animals

Aug 8, 2023 · Let's explore interesting facts about types of snapper fish, such as where they live, distinct marks, and average length.

Snapper: Everything You Need to Know - Ocean Insider

May 10, 2023 · Snapper is a general term that references numerous fish species, predominantly from the family Lutjanidae, comprising approximately 109 species. The common characteristic ...

Different Types of Snapper - American Oceans

Most snapper species grow fast, making them unsuitable for aquarium use. This article focuses on popular types of snapper that anglers usually target, their appearance, distribution, and ...

Lutjanidae - Wikipedia

Many species around the world are known in local languages as red snapper, including species from different genera (including Lutjanus and Pristipomoides) Snappers inhabit tropical, ...

Discover The Different Types Of Snapper And Their Unique ...

Oct 26, 2023 · Explore the world of snapper species including Red, Yellowtail, Mutton, Cubera, and Lane Snapper. Discover their distinct qualities, habitats, and cooking tips to find your ...

Snapper | Legendary

Snapper.® A legendary brand that started it all. We created a category when we invented the industry's first self-propelled rotary lawn mower in 1951 and we didn't stop there.

Snapper | Saltwater, Reef, Edible | Britannica

snapper, any of about 105 species of fishes of the family Lutjanidae (order Perciformes). Snappers are found, often in abundance, throughout the tropics.

TOP 10 BEST Fresh Snapper in Toronto, ON - Updated 2025 - Yelp

Top 10 Best Fresh Snapper in Toronto, ON - July 2025 - Yelp - Coral Sea Fish Market, Osler Fish Market, Yuzuki Fish Market, Taro's Fish, Honest Weight, Miss Likklemore's, New Orleans ...

Snapper Fish Guide: Habitat, Diet, Life Cycle, and Facts - FishOnTips

Jul 8, 2023 · Discover everything about Snapper fish, including various species, their habitats, diet, and expert tips on how to catch them. Learn about the unique features of these popular ...

Discovering Snapper: The Fish of Many Colors - MeatChefTools

Nov 5, 2024 · Snapper encompasses a diverse range of species, but some of the most commonly found types include Red Snapper, Yellowtail Snapper, and Lane Snapper. Red Snapper is ...

13 Different Types of Snapper Fish Ranked by Size - AZ Animals

Aug 8, 2023 · Let's explore interesting facts about types of snapper fish, such as where they live, distinct marks, and average length.

Snapper: Everything You Need to Know - Ocean Insider

May 10, 2023 · Snapper is a general term that references numerous fish species, predominantly from the family Lutjanidae, comprising approximately 109 species. The common characteristic ...

Different Types of Snapper - American Oceans

Most snapper species grow fast, making them unsuitable for aquarium use. This article focuses on popular types of snapper that anglers usually target, their appearance, distribution, and ...

Lutjanidae - Wikipedia

Many species around the world are known in local languages as red snapper, including species from different genera (including *Lutjanus* and *Pristipomoides*) Snappers inhabit tropical, ...

Discover The Different Types Of Snapper And Their Unique Qualities

Oct 26, 2023 · Explore the world of snapper species including Red, Yellowtail, Mutton, Cubera, and Lane Snapper. Discover their distinct qualities, habitats, and cooking tips to find your ...

Discover the snapper clutch assembly diagram and understand its components for optimal maintenance. Learn more about assembly and troubleshooting tips today!

[Back to Home](#)