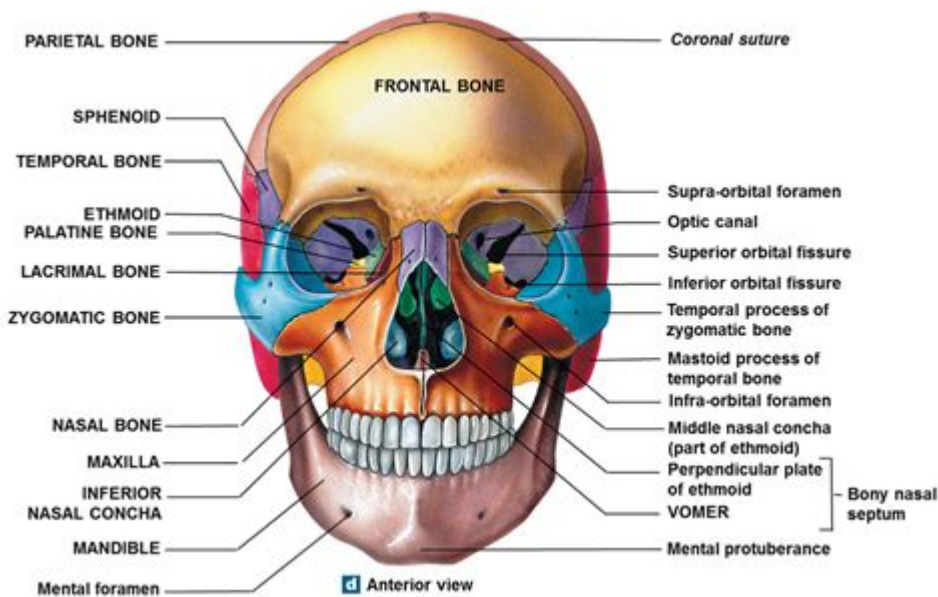


Skull Anatomy Quiz



Skull anatomy quiz enthusiasts often find themselves delving deep into the intricate structure of the human skull, a vital component of human anatomy that serves not only as a protective casing for the brain but also as a framework for the face. Understanding the skull's anatomy is crucial for various fields, including medicine, dentistry, and anthropology. This article will explore the various aspects of skull anatomy, including its structure, functions, and common quiz questions that highlight its complexity.

Overview of the Skull Anatomy

The human skull is a complex structure composed of 22 bones that can be categorized into two main groups: the cranial bones and the facial bones.

Cranial Bones

The cranial bones form the protective case around the brain and are responsible for housing and safeguarding the central nervous system. There are eight cranial bones:

1. **Frontal Bone:** This bone forms the forehead and the upper part of the eye sockets.
2. **Parietal Bones (2):** These paired bones form the sides and roof of the cranium.
3. **Temporal Bones (2):** Located on the sides of the skull, these bones house the structures of the ears.
4. **Occipital Bone:** This bone forms the back and base of the skull.
5. **Sphenoid Bone:** A butterfly-shaped bone that contributes to the base of the skull and the eye sockets.
6. **Ethmoid Bone:** A light and spongy bone located between the eyes, contributing to the nasal cavity.

Facial Bones

The facial bones provide the structure for the face and include 14 bones:

1. Maxillae (2): The upper jaw bones that hold the upper teeth.
2. Zygomatic Bones (2): Also known as cheekbones, these bones form the prominence of the cheeks.
3. Nasal Bones (2): These small bones form the bridge of the nose.
4. Palatine Bones (2): These bones form part of the hard palate of the mouth and the floor of the nose.
5. Lacrimal Bones (2): The smallest bones in the face, these are located in the corner of the eye sockets.
6. Inferior Nasal Conchae (2): These bones form part of the lateral walls of the nasal cavity.
7. Vomer: This bone forms the lower part of the nasal septum.
8. Mandible: The lower jawbone, which is the only movable bone of the skull.

Functions of the Skull

The skull serves several critical functions that are essential for human survival and daily activities. Understanding these functions can be beneficial for anyone preparing for a skull anatomy quiz.

1. Protection

The primary function of the skull is to protect the brain from trauma and injury. The hard cranial bones absorb and dissipate impact forces, safeguarding the delicate neural tissues.

2. Support

The skull provides structural support for the face and holds the jaw in place, allowing for functions like chewing and speaking.

3. Housing Sensory Organs

The skull contains cavities that house vital sensory organs. For example, the orbits contain the eyes, and the nasal cavity houses the olfactory system responsible for the sense of smell.

4. Formation of Cavities

The skull is not just a solid structure; it also forms various cavities that serve different purposes. For instance, the cranial cavity encases the brain, while the oral cavity houses the tongue and aids in digestion.

5. Attachment Points

The skull provides several areas for muscle attachment, allowing for the movement of the head and facial expressions.

Common Skull Anatomy Quiz Questions

When it comes to testing one's knowledge of skull anatomy, various quiz questions can be employed. These questions often cover the names, functions, and locations of the different bones. Here are some examples:

1. Identification Questions

- What bone forms the forehead?
- Answer: Frontal Bone
- Which bones are known as the cheekbones?
- Answer: Zygomatic Bones

2. True or False Questions

- The mandible is the only movable bone of the skull.
- Answer: True
- The occipital bone forms the front of the skull.
- Answer: False

3. Multiple Choice Questions

- How many cranial bones are there in the human skull?
- A) 8
- B) 12
- C) 22
- D) 14
- Answer: A) 8
- Which bone is shaped like a butterfly?
- A) Ethmoid
- B) Sphenoid
- C) Maxilla
- D) Temporal
- Answer: B) Sphenoid

4. Fill in the Blanks

- The bone that forms the lower jaw is called the _____.
- Answer: Mandible

- The two bones that make up the upper jaw are called _____.
- Answer: Maxillae

Importance of Skull Anatomy in Various Fields

Understanding skull anatomy is crucial for various professionals, including:

1. Medical Professionals

Doctors, especially neurosurgeons and maxillofacial surgeons, must have a thorough understanding of skull anatomy to perform surgeries effectively and safely.

2. Dentists

Dentists rely on knowledge of the skull to understand dental structures and perform procedures related to oral health.

3. Forensic Scientists

Forensic scientists often use skull anatomy to help identify human remains and determine characteristics such as age, sex, and ancestry.

4. Anthropologists

Anthropologists study skulls to understand human evolution and the relationship between different human species.

Conclusion

A skull anatomy quiz can be an engaging way to learn about the intricate structure and functions of the skull. By understanding the various bones, their functions, and their significance in different fields, participants can appreciate the complexity of human anatomy. Whether for academic purposes, professional development, or personal interest, mastering skull anatomy is a valuable

endeavor that enhances our understanding of the human body.

Frequently Asked Questions

What are the main parts of the human skull?

The human skull consists of two main parts: the cranium, which protects the brain, and the facial bones, which form the structure of the face.

How many bones make up the adult human skull?

The adult human skull is typically composed of 22 bones, which include both the cranial and facial bones.

What is the function of the foramen magnum?

The foramen magnum is the opening at the base of the skull that allows the spinal cord to connect to the brain.

Which bone is commonly referred to as the 'cheekbone'?

The cheekbone is scientifically known as the zygomatic bone.

What is the significance of the suture lines in the skull?

Suture lines are fibrous joints that connect the bones of the skull, allowing for slight movement during childbirth and helping to absorb shock.

What is the role of the mandible in skull anatomy?

The mandible, or lower jawbone, is the only movable bone of the skull and is crucial for chewing and speaking.

Which part of the skull houses the brain?

The cranium is the part of the skull that encases and protects the brain.

What bone is known as the 'forehead' bone?

The frontal bone is known as the forehead bone and forms the anterior part of the skull.

Find other PDF article:

<https://soc.up.edu.ph/11-plot/Book?trackid=MRA36-9698&title=calculus-2-final-cheat-sheet.pdf>

[Skull Anatomy Quiz](#)

[Skull - Wikipedia](#)

The skull forms the frontmost portion of the axial skeleton and is a product of cephalization and vesicular enlargement of the brain, with several special senses structures such as the eyes, ears, ...

Skull Emoji | Meaning, Copy And Paste - Emojipedia

A whitish-gray, cartoon-styled human skull with large, black eye sockets. Commonly expresses figurative death, e.g., dying from extreme laughter, frustration, or affection.

The Skull: Names of Bones in the Head, with Anatomy, & Labeled ...

The skull is one of the most vital bony structures of the human body, as it houses and protects the most important organs, including the brain. There are 29 bones (including the hyoid and middle ...

[Skull Emoji - Emojigraph](#)

A whitish-gray, cartoon-styled human skull with large, black eye sockets. Used commonly as a figure of death or deadly danger but also used to describe someone that is too skinny.

Skull Anatomy: Complete Guide with Parts, Names & Diagram

Oct 16, 2024 · Learn a skull anatomy with parts, names & detailed diagram. Complete guide for students to explore structure & function of the human skull.

[Bones of the Skull - Structure - Fractures - TeachMeAnatomy](#)

Apr 2, 2025 · The skull is a bony structure that supports the face and forms a protective cavity for the brain. It is comprised of many bones, which are formed by intramembranous ossification, and ...

Skull Pictures, Anatomy & Diagram - Healthline

Jan 20, 2018 · Parietal bone: the main side of the skull. Sphenoid bone: the bone located under the frontal bone, behind the nose and eye cavities.

[7.3 The Skull - Anatomy & Physiology - Open Educational Resources](#)

The skull is the skeletal structure of the head that supports the face and protects the brain. It is subdivided into the facial bones and the cranium, or cranial vault (Figure 7.3.1). The facial bones ...

The Skull: Function, Composition, Health Problems, and More

Sep 17, 2024 · All the various skull bone parts come together to serve two major purposes. First, the skull surrounds and protects the brain, brainstem, and eyes. In addition, the skull provides the...

Skull - Anatomy, Function, Structure, Diagram, Significance

Jan 15, 2025 · The skull is a bony framework of the head, consisting of 22 bones. It is divided into two main parts: the cranium, which encases the brain, and the facial skeleton, which supports the ...

[Skull - Wikipedia](#)

The skull forms the frontmost portion of the axial skeleton and is a product of cephalization and vesicular enlargement of the brain, with several special senses structures such as the eyes, ears, ...

Skull Emoji | Meaning, Copy And Paste - Emojipedia

A whitish-gray, cartoon-styled human skull with large, black eye sockets. Commonly expresses figurative death, e.g., dying from extreme laughter, frustration, or affection.

The Skull: Names of Bones in the Head, with Anatomy, & Labeled ...

The skull is one of the most vital bony structures of the human body, as it houses and protects the most important organs, including the brain. There are 29 bones (including the hyoid and middle ...

Skull Emoji - Emojigraph

A whitish-gray, cartoon-styled human skull with large, black eye sockets. Used commonly as a figure of death or deadly danger but also used to describe someone that is too skinny.

Skull Anatomy: Complete Guide with Parts, Names & Diagram

Oct 16, 2024 · Learn a skull anatomy with parts, names & detailed diagram. Complete guide for students to explore structure & function of the human skull.

Bones of the Skull - Structure - Fractures - TeachMeAnatomy

Apr 2, 2025 · The skull is a bony structure that supports the face and forms a protective cavity for the brain. It is comprised of many bones, which are formed by intramembranous ossification, and ...

Skull Pictures, Anatomy & Diagram - Healthline

Jan 20, 2018 · Parietal bone: the main side of the skull. Sphenoid bone: the bone located under the frontal bone, behind the nose and eye cavities.

7.3 The Skull - Anatomy & Physiology - Open Educational Resources

The skull is the skeletal structure of the head that supports the face and protects the brain. It is subdivided into the facial bones and the cranium, or cranial vault (Figure 7.3.1). The facial bones ...

The Skull: Function, Composition, Health Problems, and More

Sep 17, 2024 · All the various skull bone parts come together to serve two major purposes. First, the skull surrounds and protects the brain, brainstem, and eyes. In addition, the skull provides the...

Skull - Anatomy, Function, Structure, Diagram, Significance

Jan 15, 2025 · The skull is a bony framework of the head, consisting of 22 bones. It is divided into two main parts: the cranium, which encases the brain, and the facial skeleton, which supports the ...

Test your knowledge with our engaging skull anatomy quiz! Discover fascinating facts and enhance your understanding of human anatomy. Learn more now!

[Back to Home](#)