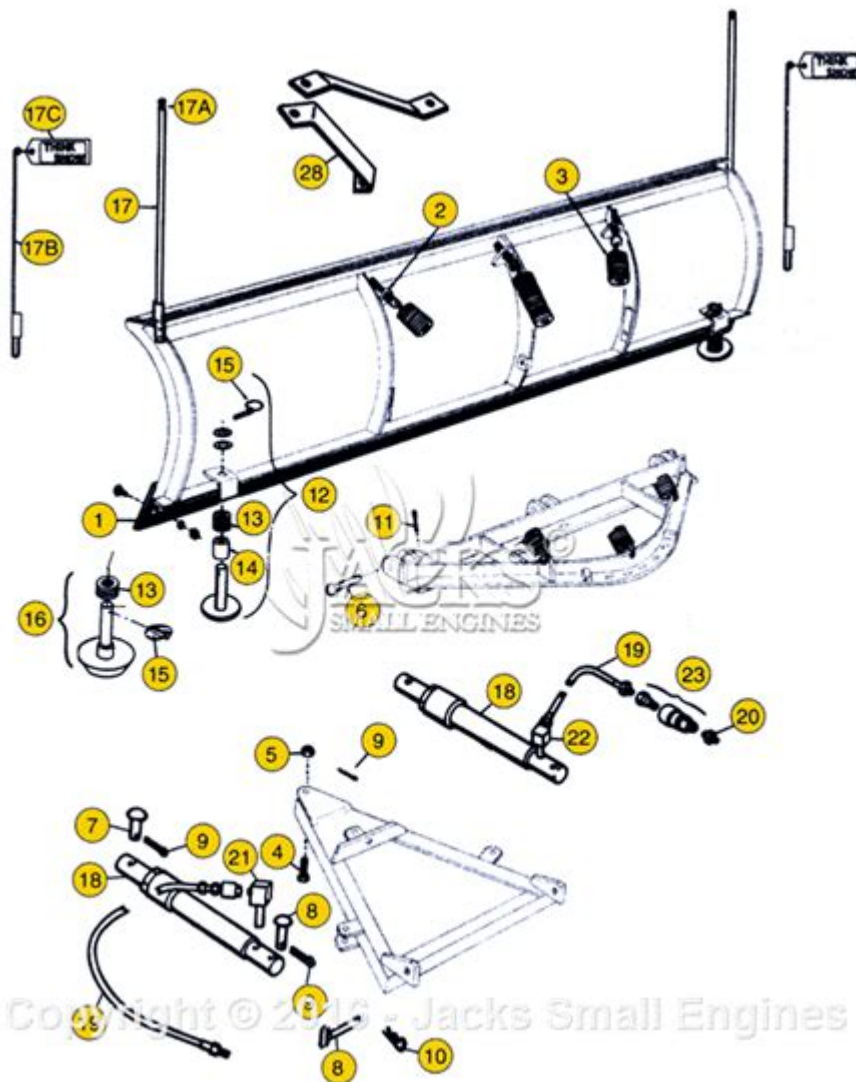


Snow Plow Parts Diagram



Snow plow parts diagram is an essential tool for anyone involved in winter maintenance operations. Understanding the components of a snow plow can significantly enhance the efficiency and effectiveness of snow removal tasks. This article delves into the various parts of a snow plow, their functions, and how they work together to clear snow from roadways and driveways. Whether you are a professional snow removal contractor or a homeowner looking to maintain your property during winter, having a solid grasp of snow plow parts is invaluable.

Overview of Snow Plow Systems

Snow plows are typically mounted on the front of vehicles, allowing for efficient snow removal. They come in various sizes and designs, suited for different applications, from commercial use to residential needs. The core components of a snow plow system include the blade, frame, hydraulic system, and electrical components.

Types of Snow Plow Blades

The blade is one of the most critical components of a snow plow. It is responsible for pushing snow aside as the vehicle moves forward. There are several types of snow plow blades, each designed for specific conditions:

1. **Straight Blades:** The most common type of snow plow blade, straight blades are ideal for standard snow removal tasks and provide a straightforward, effective solution for clearing roads and driveways.
2. **V-Blades:** These blades can be angled into a V shape, allowing for more aggressive snow removal. V-blades are particularly useful for heavy snowfalls and can also be adjusted to form a scoop shape for different scenarios.
3. **Wing Blades:** Wing blades feature extensions on the sides that enable wider snow removal. They are particularly beneficial for large parking lots and highways, allowing for efficient clearing without needing to make multiple passes.
4. **Box Blades:** These are enclosed designs that can hold snow as the vehicle moves. Box blades are typically used for larger operations where snow needs to be collected and transported.

Key Components of a Snow Plow

Understanding the individual components of a snow plow is essential for maintenance and repair. Below is a breakdown of the key parts:

1. Blade

The blade is the front-facing component that contacts the snow. It comes in various widths and materials, such as steel or poly, and can be adjusted for different angles to optimize snow removal.

2. Plow Frame

The plow frame supports the blade and connects it to the vehicle. It is usually made of heavy-duty steel to withstand the forces exerted during snow removal. The frame design varies depending on the type of plow and vehicle.

3. Hydraulic System

The hydraulic system is responsible for raising, lowering, and angling the blade. It consists of several components:

- **Hydraulic Pump:** Supplies fluid to the system, allowing for movement of the blade.

- Hydraulic Cylinders: Actuators that raise and lower the blade and angle it left or right.
- Hoses and Fittings: Connect the hydraulic components and transport fluid.

4. Electrical Components

The electrical system controls the hydraulic system and includes:

- Wiring Harness: Connects the various electrical components.
- Control Switch: Allows the operator to control the blade's movements from inside the vehicle.
- Relays and Fuses: Protect the electrical components from overloads.

5. Mounting Kit

This kit includes all necessary brackets and hardware needed to attach the plow to the vehicle. It is essential for ensuring a secure fit and proper alignment for effective snow removal.

Understanding the Snow Plow Parts Diagram

A snow plow parts diagram is a visual representation that illustrates the various components and their relationships within the snow plow system. Understanding this diagram can help in diagnosing issues and performing maintenance efficiently.

Components Illustrated in the Diagram

The snow plow parts diagram typically includes:

- Blade Assembly: Shows the blade, mounts, and angle adjustment mechanisms.
- Hydraulic System: Depicts the hydraulic pump, cylinders, hoses, and connection points.
- Frame Structure: Illustrates how the frame supports the blade and connects to the vehicle.
- Electrical Layout: Maps out wiring paths, switches, and relays.

Reading the Diagram

To read a snow plow parts diagram effectively, follow these steps:

1. Identify the Main Components: Start by locating the primary parts, such as the blade and frame.
2. Understand the Connections: Look for lines that indicate hydraulic hoses and electrical wiring. These lines show how components interact with each other.
3. Refer to Labels: Most diagrams include labels that specify part numbers or names; this is vital for ordering replacements or understanding specific functions.
4. Cross-Reference with Manuals: Use the diagram alongside the manufacturer's maintenance manual for detailed instructions on assembly or repair.

Maintenance Tips for Snow Plow Parts

To ensure the longevity and efficiency of your snow plow, regular maintenance is crucial. Here are some essential maintenance tips:

1. Routine Inspections

Conduct regular inspections of all parts, especially the blade, hydraulic system, and electrical components. Look for signs of wear, rust, or leaks.

2. Lubrication

Keep moving parts well-lubricated to prevent friction and wear. Check the manufacturer's recommendations for specific lubrication points.

3. Hydraulic Fluid Levels

Regularly check the hydraulic fluid levels and replace it according to the manufacturer's guidelines. Contaminated or low fluid levels can lead to system failure.

4. Blade Maintenance

Inspect the blade for any dents, cracks, or excessive wear. Sharpen the blade edges as needed to ensure optimal snow cutting performance.

5. Electrical System Checks

Test the electrical components regularly to ensure they function correctly. Replace any faulty switches or wiring to prevent operational issues.

Conclusion

A thorough understanding of the snow plow parts diagram and the various components of snow plows is vital for effective winter maintenance operations. Whether you are a professional or a homeowner, knowing how each part functions and interacts can enhance your snow removal efforts. Regular maintenance and proper use of the snow plow will ensure it operates efficiently and lasts for many winters to come. By investing time in learning about these components, you can make informed decisions regarding repairs, replacements, and overall snow management strategies.

Frequently Asked Questions

What are the main components of a snow plow parts diagram?

The main components typically include the blade, frame, lift mechanism, mount, hydraulic system, and control system.

How can I read a snow plow parts diagram effectively?

To read a snow plow parts diagram effectively, start by identifying the key components labeled in the diagram, then reference the accompanying parts list for detailed descriptions.

Where can I find a snow plow parts diagram for my specific model?

You can find a snow plow parts diagram for your specific model on the manufacturer's website, in the owner's manual, or through authorized dealers.

Why is it important to have a snow plow parts diagram?

A snow plow parts diagram is important for troubleshooting, maintenance, and replacement of parts, ensuring that repairs are done correctly and efficiently.

What should I do if I can't find the snow plow parts diagram I need?

If you can't find the snow plow parts diagram, consider contacting the manufacturer directly, checking forums for your specific model, or visiting a local dealer.

Are snow plow parts diagrams standardized across different brands?

No, snow plow parts diagrams are not standardized; they vary by brand and model, so it's essential to refer to the correct diagram for your specific equipment.

Can I use a snow plow parts diagram for repairs on my own?

Yes, a snow plow parts diagram can be very helpful for DIY repairs, but ensure you have the necessary tools and knowledge to perform the repairs safely.

What tools do I need to access snow plow parts based on the diagram?

Common tools needed include wrenches, screwdrivers, pliers, a hydraulic jack, and safety gear like gloves and goggles.

How often should I refer to the snow plow parts diagram for

maintenance?

It's advisable to refer to the snow plow parts diagram during regular maintenance checks, especially before and after the snow season, to ensure all components are in good condition.

Find other PDF article:

<https://soc.up.edu.ph/58-view/Book?dataid=MHd77-9968&title=the-cask-of-amontillado-figurative-language.pdf>

Snow Plow Parts Diagram

YouTube Help - Google Help

Learn more about YouTube YouTube help videos Browse our video library for helpful tips, feature overviews, and step-by-step tutorials. YouTube Known Issues Get information on reported ...

Download the YouTube app

Check device requirements The YouTube app is available on a wide range of devices, but there are some minimum system requirements and device-specific limitations: Android: Requires ...

NFL Sunday Ticket pricing, billing, & purchase options - YouTube ...

In this article, you'll learn about pricing on YouTube TV and YouTube Primetime Channels, ways to purchase, and billing for NFL Sunday Ticket. To learn about game availability and package ...

Get help signing in to YouTube - Google Help

To make sure you're getting the directions for your account, select from the options below.

Turn Restricted Mode on or off on YouTube

Restricted Mode is an optional setting that you can use on YouTube. This feature can help screen out potentially mature content that you or others using your devices may prefer not to view. ...

Utiliser YouTube Studio - Ordinateur - Aide YouTube

Utiliser YouTube Studio YouTube Studio est la plate-forme des créateurs. Elle rassemble tous les outils nécessaires pour gérer votre présence en ligne, développer votre chaîne, interagir avec ...

Use automatic dubbing - YouTube Help - Google Help

Automatic dubbing generates translated audio tracks in different languages to make your videos more accessible to viewers around the world. Videos with these audio tracks are marked as ...

Use your Google Account for YouTube

After signing up for YouTube, signing in to your Google account on another Google service will automatically sign you in to YouTube. Deleting your Google Account will delete your YouTube ...

Descargar la aplicación YouTube - Android - Ayuda de YouTube

La aplicación YouTube está disponible en una gran variedad de dispositivos, pero hay algunos requisitos mínimos del sistema y limitaciones específicas para los dispositivos: Android: se ...

YouTube Partner Program overview & eligibility

The YouTube Partner Program (YPP) gives creators greater access to YouTube resources and monetization features, and access to our Creator Support teams. It also allows revenue ...

Translate written words - Computer - Google Translate Help

Translate longer text You can translate up to 5,000 characters at a time when you copy and paste your text. On your computer, open Google Translate. At the top of the screen, choose the ...

Google Translate Help

Official Google Translate Help Center where you can find tips and tutorials on using Google Translate and other answers to frequently asked questions.

Translate documents & websites - Computer - Google Help

In your browser, go to Google Translate. At the top, click Documents. Choose the languages to translate to and from. To automatically set the original language of a document, click Detect ...

Descargar y usar el Traductor de Google

Con la versión web o la aplicación del Traductor de Google, puedes traducir texto, frases escritas a mano, fotos y voz en más de 200 idiomas.

Translate by speech - Computer - Google Translate Help

Translate by speech If your device has a microphone, you can translate spoken words and phrases. In some languages, you can hear the translation spoken aloud. Important: If you use ...

Télécharger et utiliser Google Traduction

Télécharger et utiliser Google Traduction Vous pouvez traduire du texte saisi au clavier, en écriture manuscrite, sur une photo ou avec la saisie vocale dans plus de 200 langues à l'aide ...

Google Translate downloaden en gebruiken

Met de Google Translate-app kun je (handgeschreven) tekst, foto's en spraak vertalen in meer dan 200 talen. Je kunt Translate ook op het web gebruiken.

Google Translate - Google Translate

200 Google Translate 200 Google Translate

Descărcați și folosiți Google Traducere - Computer - Google ...

Puteți traduce text, scriere de mână, fotografii și vorbire în peste 200 de limbi, folosind aplicația Google Traducere. Puteți folosi Traducere și pe web.

Как скачать и использовать Google Переводчик

Как скачать и использовать Google Переводчик В приложении "Google Переводчик" можно переводить печатный и рукописный текст, речь и надписи с изображений. ...

Explore our detailed snow plow parts diagram to understand each component's function. Learn more to keep your snow plow in top shape this winter!

[Back to Home](#)