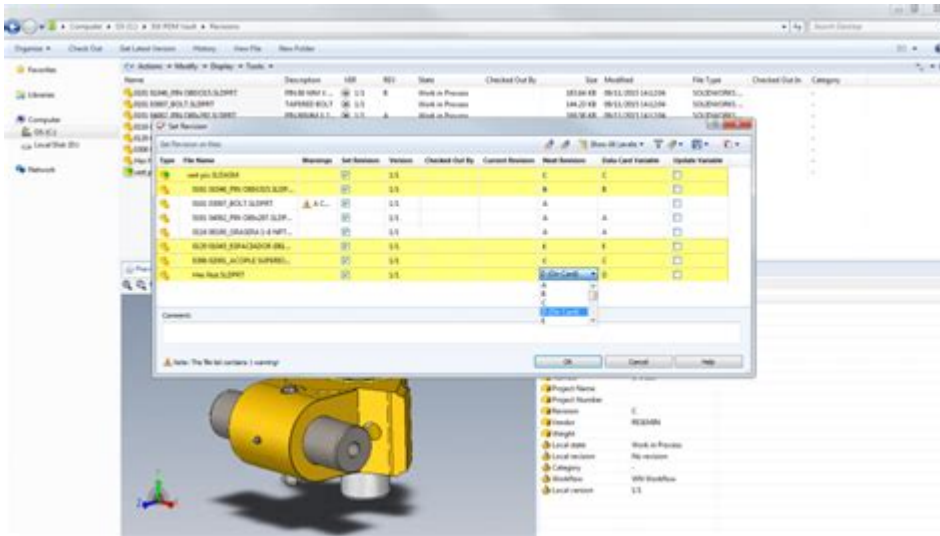


Solidworks Enterprise Pdm Administration Guide



SolidWorks Enterprise PDM Administration Guide

SolidWorks Enterprise PDM (Product Data Management) is a powerful tool that helps organizations manage their design data and streamline workflows. With its robust capabilities, it allows users to control file versions, track changes, and collaborate effectively within teams. However, a successful implementation of SolidWorks Enterprise PDM requires a thorough understanding of its administrative functions. This guide aims to provide a comprehensive overview of the key administrative tasks involved in managing SolidWorks Enterprise PDM.

Understanding SolidWorks Enterprise PDM

Before diving into the administration aspects, it's essential to understand what SolidWorks Enterprise PDM is and how it fits into the overall design process.

What is SolidWorks Enterprise PDM?

SolidWorks Enterprise PDM is a data management solution designed for engineering teams. It enables users to:

- Store and manage design files securely.
- Control revisions and versions of documents.
- Facilitate collaboration among team members.
- Automate workflows to enhance productivity.

Key Features

Some of the notable features of SolidWorks Enterprise PDM include:

- Version Control: Keeps track of all changes made to files, allowing users to revert to previous versions if necessary.
- Check-in/Check-out: Ensures that users have exclusive access to files while they are being edited.
- Search Functionality: Advanced search options to quickly locate files based on various criteria.
- Workflow Management: Customizable workflows to streamline processes and approvals.

Setting Up SolidWorks Enterprise PDM

The setup process for SolidWorks Enterprise PDM involves several key steps to ensure that the system is configured correctly for your organization's needs.

Prerequisites

Before installation, ensure that the following prerequisites are met:

- A compatible operating system (Windows Server recommended).
- SQL Server for database management.
- SolidWorks software installed on client machines.

Installation Steps

To install SolidWorks Enterprise PDM, follow these steps:

1. Download the Installation Package: Obtain the installation files from the SolidWorks website.
2. Run the Installation Wizard: Launch the installer and select the components you wish to install (e.g., Server, Client, and Administration Tool).
3. Configure Database: Connect to the SQL Server and create a new database for Enterprise PDM.
4. Set Up Vault: Designate a folder to serve as the vault where all data will be stored.
5. User Permissions: Define user groups and set permissions to ensure proper access control.

Administering SolidWorks Enterprise PDM

Once the system is set up, ongoing administration is crucial to maintain performance and

security.

User Management

Effective user management is essential for maintaining the integrity of data within the system.

- Adding Users:
 - Open the Administration Tool.
 - Navigate to the Users section and select "Add User."
 - Enter the user's information and assign them to relevant groups.
- Managing Permissions:
 - Permissions can be set at various levels (folder, file, or user-specific).
 - Use the "Permissions" tab within the Administration Tool to define who can view, edit, or delete files.

Workflow Management

Workflows in SolidWorks Enterprise PDM help automate processes and ensure that tasks are completed efficiently.

- Creating a New Workflow:
 1. Open the Administration Tool.
 2. Go to the Workflows section and select "New."
 3. Define the stages of the workflow (e.g., Approval, Review, Release).
 4. Assign users to each stage based on their roles.
- Modifying Existing Workflows:
 - Select the workflow you wish to modify.
 - Adjust the stages, conditions, or assigned users as necessary.

File Management

Proper file management is critical to prevent data loss and streamline access.

- File Versioning: Ensure that all files are version-controlled. Users should regularly check in their changes to keep the central repository updated.
- Data Backup: Regularly back up the vault to prevent data loss. Use SQL Server backup features or third-party tools for comprehensive backups.

Maintenance and Troubleshooting

Regular maintenance of SolidWorks Enterprise PDM is necessary to ensure optimal performance.

Performance Monitoring

Keep an eye on system performance by:

- **Monitoring Log Files:** Regularly check the log files for any errors or warnings.
- **Database Maintenance:** Perform routine maintenance on the SQL database to optimize performance.

Troubleshooting Common Issues

Here are some common issues and their solutions:

- **User Cannot Check Out a File:**
 - Ensure the user has the correct permissions.
 - Verify that the file is not already checked out by another user.
- **Slow Performance:**
 - Check network connectivity.
 - Ensure that the SQL Server is properly optimized.

Best Practices for Administration

To maximize the benefits of SolidWorks Enterprise PDM, consider these best practices:

- **Regular Training:** Provide ongoing training for users to familiarize them with the system.
- **Documentation:** Maintain clear documentation of workflows and procedures to aid in onboarding new users.
- **Feedback Loop:** Establish a feedback mechanism for users to report issues or suggest improvements.
- **Security Measures:** Regularly review and update user permissions and security settings.

Conclusion

Administering SolidWorks Enterprise PDM requires a comprehensive understanding of its features and functionalities. By following the guidelines outlined in this administration guide, organizations can effectively manage their data, streamline workflows, and enhance collaboration among team members. With proactive maintenance and adherence to best practices, SolidWorks Enterprise PDM can significantly improve the efficiency of design processes in any engineering environment.

Frequently Asked Questions

What are the key features of the SolidWorks Enterprise PDM administration guide?

The SolidWorks Enterprise PDM administration guide includes features such as user management, vault configuration, security settings, workflow management, and integration options with other SolidWorks tools.

How do I set up user permissions in SolidWorks Enterprise PDM?

To set up user permissions in SolidWorks Enterprise PDM, navigate to the administration tool, select the user or group, and configure the permissions under the 'Permissions' tab for various vaults and folders.

What is the process for configuring workflows in SolidWorks Enterprise PDM?

Configuring workflows in SolidWorks Enterprise PDM involves using the Workflow Editor to define states and transitions, setting up notifications, and assigning users or groups to specific workflow actions.

How can I integrate SolidWorks Enterprise PDM with other applications?

Integration can be achieved by using the SolidWorks API, configuring add-ins, or leveraging third-party connectors to connect SolidWorks Enterprise PDM with applications like ERP systems or other CAD software.

What troubleshooting steps should I take if users cannot access the SolidWorks Enterprise PDM vault?

If users cannot access the vault, check their permissions, ensure the SQL server is running, verify network connectivity, and confirm that the PDM services are active and properly configured.

Where can I find updates or changes in the SolidWorks Enterprise PDM administration guide?

Updates or changes to the SolidWorks Enterprise PDM administration guide can be found on the official SolidWorks website, in the documentation section, or through the SolidWorks Community forums.

Find other PDF article:

<https://soc.up.edu.ph/47-print/files?dataid=NoR11-4142&title=piggy-in-different-languages.pdf>

Solidworks Enterprise Pdm Administration Guide

COMSOL **SolidWorks** -

COMSOL **SolidWorks** COMSOL **SolidWorks** 3D **SolidWorks**

Solidworks -

solidworks **SolidWorks** 3D

solidworks? -

SOLIDWORKS 3D

solidworks -

Nov 10, 2024 · solidworks **SolidWorks**

SolidWorks-

Mar 24, 2017 · **SolidWorks** **SolidWorks**

solidworks_

Dec 5, 2024 · **solidworks** **SolidWorks** 1. **SolidWorks** 2. 3.

CAD,SolidWorks,ProE,UG -

Solidworks Dassault Systems 1995 11 1 **ProE** PTC **Creo** 1987 **ProE**

solidworks ...

solidworks 67

SolidWorks **STEP** -

Aug 29, 2024 · **SolidWorks** **STEP** **SolidWorks** **STP** **STEP**

固始县SolidWorks

SolidWorks -

solidworks 2021
(2010)

MAGs -

MAGs Completeness>90% Contamination<5% MAGs Completeness>50% Contaminati...

-

"Breaking your allies wasn't very challenging, But I will find ways to have fun." ↑...

migs mags mogs ...

migs mags mogs migs mags mogs ...

Unlock the full potential of your SOLIDWORKS Enterprise PDM with our comprehensive administration guide. Learn more to streamline your project management today!

[Back to Home](#)